

**The  
College  
Prep  
Piano  
Course**

**Key Signatures  
Workbook**

*by Dr. Christy Huskey*

# Major Sharp Key Signatures

First, memorize the order of sharps (#):

**F# C# G# D# A# E# B#**

Helpful hint: use this silly mnemonic device to remember the order of sharps-

**FAT CATS GO DOWN ALLEYS EATING BUGS** 😂

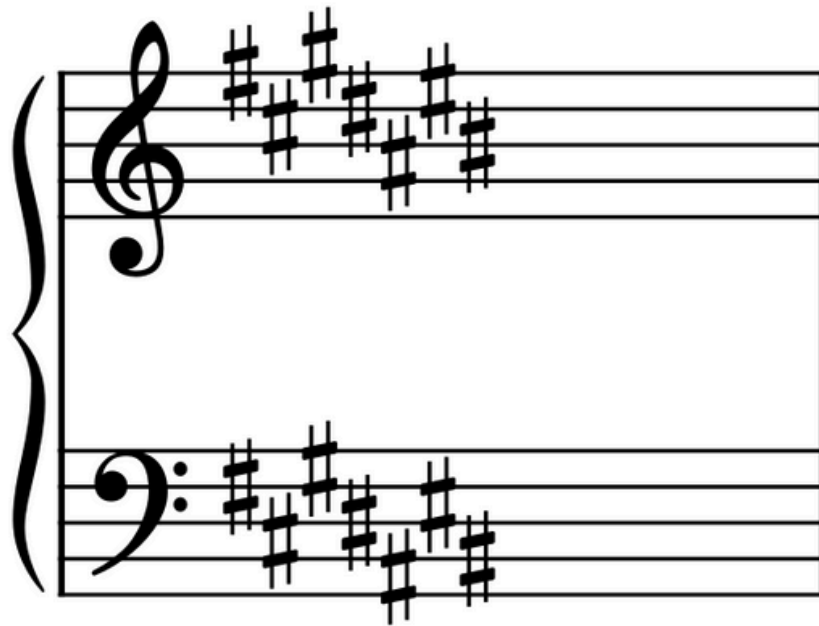
The #’s will always appear in this order.

**ALWAYS**



# Major Sharp Key Signatures

This is how the sharp key signatures appear on the staff



**The name of the key is a half step higher than the last sharp.**

*for example:*

If the key signature has 2 sharps, F# and C#,  
the last sharp is = C#

One half step higher than C# is D -  
D Major is the name of the key

# Major Sharp Key Signatures

Practice naming sharp key signatures



Last sharp: \_\_\_\_\_  
Half step up from last sharp: \_\_\_\_\_  
Name of key: \_\_\_\_\_

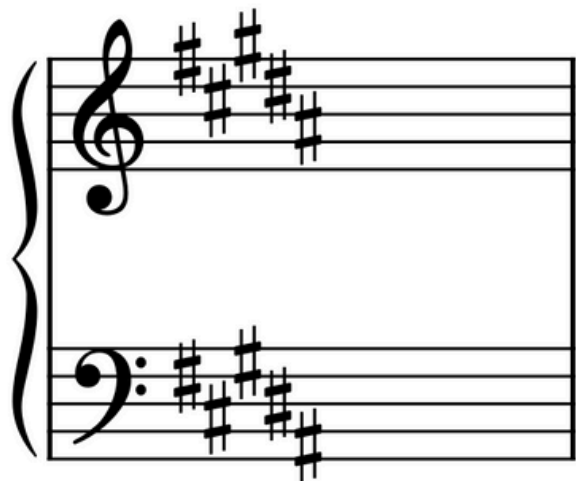


Last sharp: \_\_\_\_\_  
Half step up from last sharp: \_\_\_\_\_  
Name of key: \_\_\_\_\_



Last sharp: \_\_\_\_\_  
Half step up from last sharp: \_\_\_\_\_  
Name of key: \_\_\_\_\_

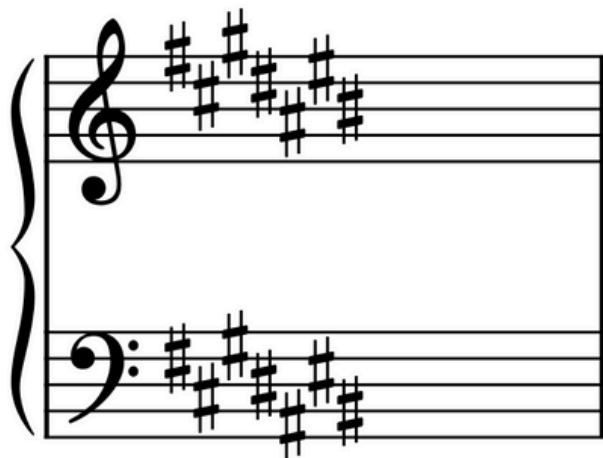
# Major Sharp Key Signatures



Last sharp: \_\_\_\_\_  
Half step up from last sharp: \_\_\_\_\_  
Name of key: \_\_\_\_\_



Last sharp: \_\_\_\_\_  
Half step up from last sharp: \_\_\_\_\_  
Name of key: \_\_\_\_\_



Last sharp: \_\_\_\_\_  
Half step up from last sharp: \_\_\_\_\_  
Name of key: \_\_\_\_\_

# Major Flat Key Signatures

Memorize the order of flats:

**Bb, Eb, Ab, Db, Gb, Cb, Fb**

Helpful hint: use this mnemonic device-

**B-E-A-D + GREATEST COMMON FACTOR**

The ♭'s will always appear in this order.

**ALWAYS**



# Major Flat Key Signatures

The name of the key is the name  
of the next-to-last flat

*for example:*



The flats in this key signature are:

Bb, Eb, Ab, Db

The next-to-last flat is Ab

The name of the key is Ab Major

Practice naming flat key signatures



List the flats:

\_\_\_\_\_

Next-to-last flat: \_\_\_\_\_

Name of the key: \_\_\_\_\_

# Major Flat Key Signatures

Practice naming the flat key signatures



List the flats:

\_\_\_\_\_

Next-to-last flat: \_\_\_\_\_

Name of the key: \_\_\_\_\_



List the flats:

\_\_\_\_\_

Next-to-last flat: \_\_\_\_\_

Name of the key: \_\_\_\_\_



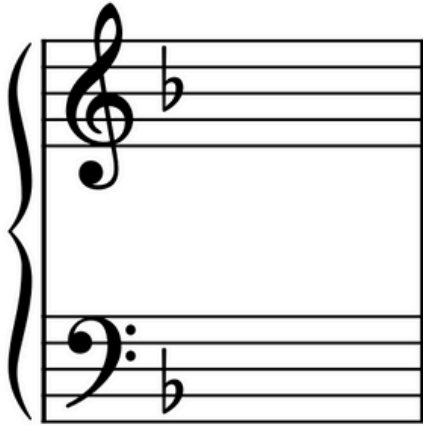
List the flats:

\_\_\_\_\_

Next-to-last flat: \_\_\_\_\_

Name of the key: \_\_\_\_\_

# Major Key Signatures



One flat? Key of F Major

No trick, just simple  
memorization

# What about *MINOR* key signatures??


No problem! Once you know the major key signatures, you can easily name the minor key signatures.

There are two types of minor keys;  
**Relative Minor** and **Parallel Minor**

**Relative Minor** keys share *the same key signature* as their Major keys.

The relative minor key is 3 half steps down from the major key. It is also the 6th scale degree of the major key.

Major Key: F Major



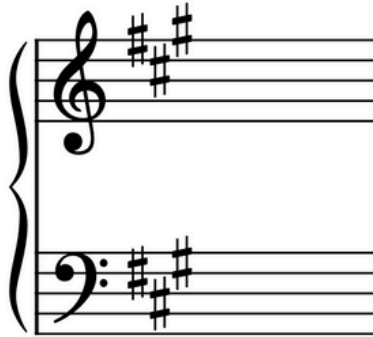
Relative Minor Key: D minor

The diagram illustrates the relationship between F Major and D minor. On the left, the text 'Major Key: F Major' is followed by a green arrow pointing right towards a musical staff. The staff shows a treble clef with a flat on the B line and a bass clef with a flat on the B line, representing F Major. On the right, the text 'Relative Minor Key: D minor' is preceded by a red arrow pointing left towards the same musical staff.

# Name the Major and Relative Minor Key for each key signature

Major Key:

\_\_\_\_\_



Relative Minor  
Key: \_\_\_\_\_

Major Key:

\_\_\_\_\_



Relative Minor  
Key: \_\_\_\_\_

Major Key:

\_\_\_\_\_



Relative Minor  
Key: \_\_\_\_\_

# Name the Major and Relative Minor Key for each key signature

Major Key:

\_\_\_\_\_



Relative Minor  
Key: \_\_\_\_\_

Major Key:

\_\_\_\_\_



Relative Minor  
Key: \_\_\_\_\_

Major Key:

\_\_\_\_\_



Relative Minor  
Key: \_\_\_\_\_

# Parallel Minor Key Signatures

**Parallel Minor** keys share *the same tonic note or first note* as their Major keys.

Their key signatures, then, are different.



G Major  
←

G Minor  
→



F Major  
←

F Minor  
→



F Major

F Minor

# Final Thoughts...

During your first year of studies as a music major, you will be asked “what key is this” a million times;

on entrance exams,  
in theory class,  
in class piano,  
sight reading in applied/private lessons,  
sight reading in large ensembles....

So enjoy learning key signatures.

Memorize them.

Sight Read in all the keys.

# Major Sharp Key Signatures

## Answer Key for page 3



Last sharp: F#

Half step up from last sharp: G

Name of key: G Major



Last sharp: D#

Half step up from last sharp: E

Name of key: E Major



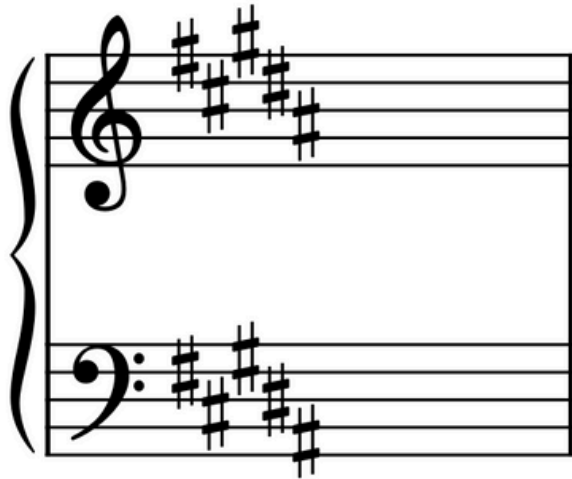
Last sharp: C#

Half step up from last sharp: D

Name of key: D Major

# Major Sharp Key Signatures

## Answer Key for page 4



Last sharp: **A#**

Half step up from last sharp: **B**

Name of key: **B Major**



Last sharp: **G#**

Half step up from last sharp: **A**

Name of key: **A Major**



Last sharp: **B#**

Half step up from last sharp: **C#**

Name of key: **C# Major**

# Major Flat Key Signatures

## Answer Key for page 6

*for example:*



The flats in this key signature are:  
Bb, Eb, Ab, Db  
The next-to-last flat is Ab  
The name of the key is Ab Major

Practice naming the flat key signatures



List the flats:  
Bb, Eb, Ab, Db, Gb  
Next-to-last flat: Db  
Name of the key: Db Major

# Major Flat Key Signatures

## Answer Key for page 7



List the flats:

Bb, Eb

Next-to-last flat: Bb

Name of the key: Bb Major



List the flats:

Bb, Eb, Ab, Db, Gb, Cb

Next-to-last flat: Gb

Name of the key: Gb Major



List the flats:

Bb, Eb, Ab

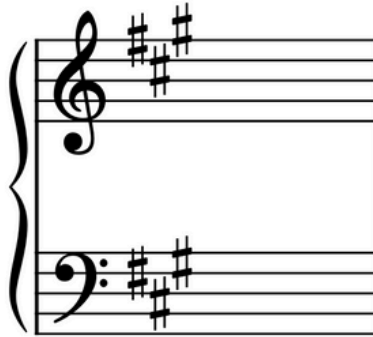
Next-to-last flat: Eb

Name of the key: Eb Major

# Name the Major and Relative Minor Key for each key signature

**Answer Key for page 10**

Major Key:  
**A Major**



Relative Minor  
Key: **F# Minor**

Major Key:  
**D Major**



Relative Minor  
Key: **B Minor**

Major Key:  
**Eb Major**



Relative Minor  
Key: **C Minor**

# Name the Major and Relative Minor Key for each key signature

**Answer Key for page 11**

Major Key:  
**Ab Major**



Relative Minor  
Key: **F Minor**

Major Key:  
**Bb Major**



Relative Minor  
Key: **G Minor**

Major Key:  
**G Major**



Relative Minor  
Key: **E Minor**