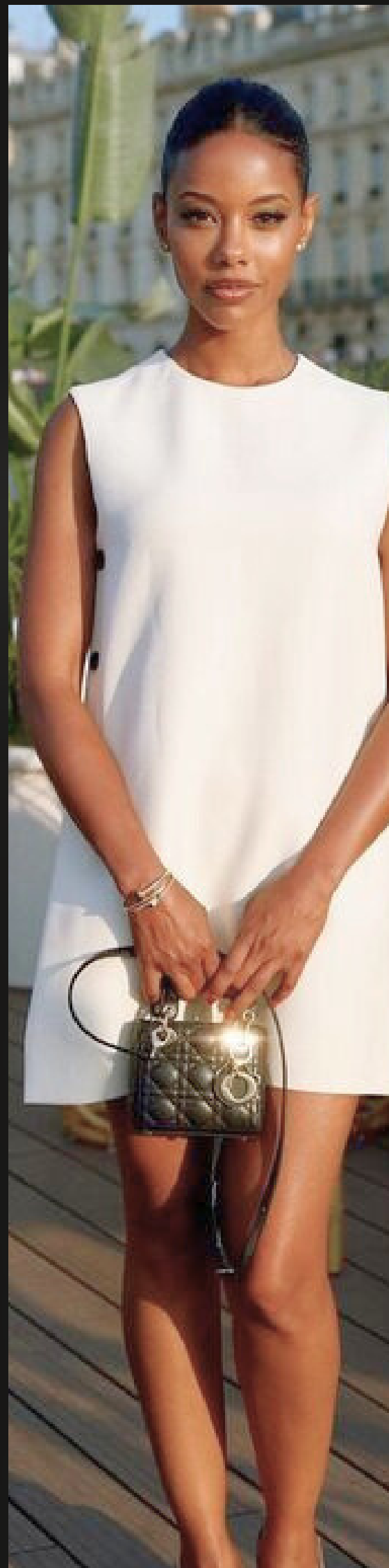


# THE 5 TYPES OF Elegant Ladies



Discover Your Type and Create  
Your Signature Style



# TABLE OF CONTENT

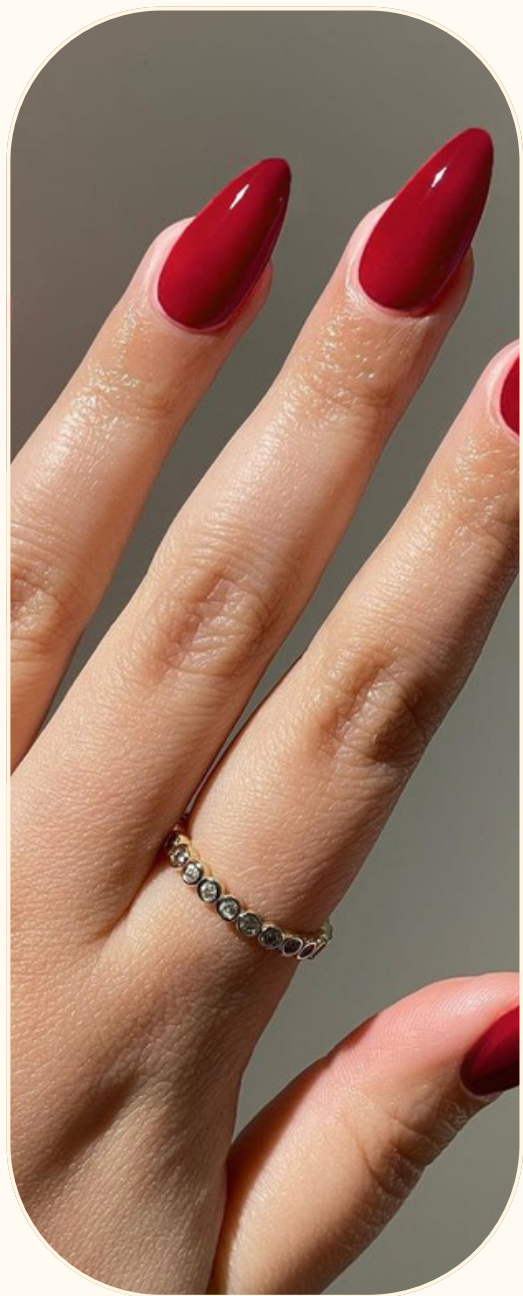
---

I. Introduction	2
II. The Classic	3-4
III. The Feminine	5-6
IV. The Sexy	7-8
V. The Natural	9-10
VI. The Creative	11-12
VII. Discover Your Type Quiz	13
VIII. Create Your Signature Style	14
IX. Next Steps	15



## About This E-Book

This E-book introduces five types of elegant ladies, defining their style, showcasing wardrobes, mood boards, and color palettes. The goal is to inspire and guide you in discovering your personal style and/or revamping your current one.



## Types of Elegance

Elegance is a multifaceted gem, and just as it comes in various forms, so do the ladies who embody it. The included quiz helps identify your preferred elegance type, with additional tips on crafting your unique signature look.



# The Classic

She's the embodiment of timeless style. With a wardrobe filled with well-tailored pieces and simple cuts, the classic elegant lady exudes grace and sophistication.

Example: Audrey Hepburn.



## Her Style

Her style can be described as sophisticated, graceful, well-tailored, refined, minimalist, effortless, chic, understated, timeless silhouettes, polished, mature, modest, and traditional.

## Her Wardrobe

Her wardrobe is filled with well-tailored pieces in subdued colors. This style embraces a minimalist approach, favoring high-quality fabrics and timeless silhouettes. Examples include well-tailored blazers, trousers, classic shift dresses, tailored pencil skirts, crisp white button-down shirts, trench coats, tweed jackets, pearl necklaces, structured handbags, classic pumps, ballet flats, hats, watches, and sunglasses.

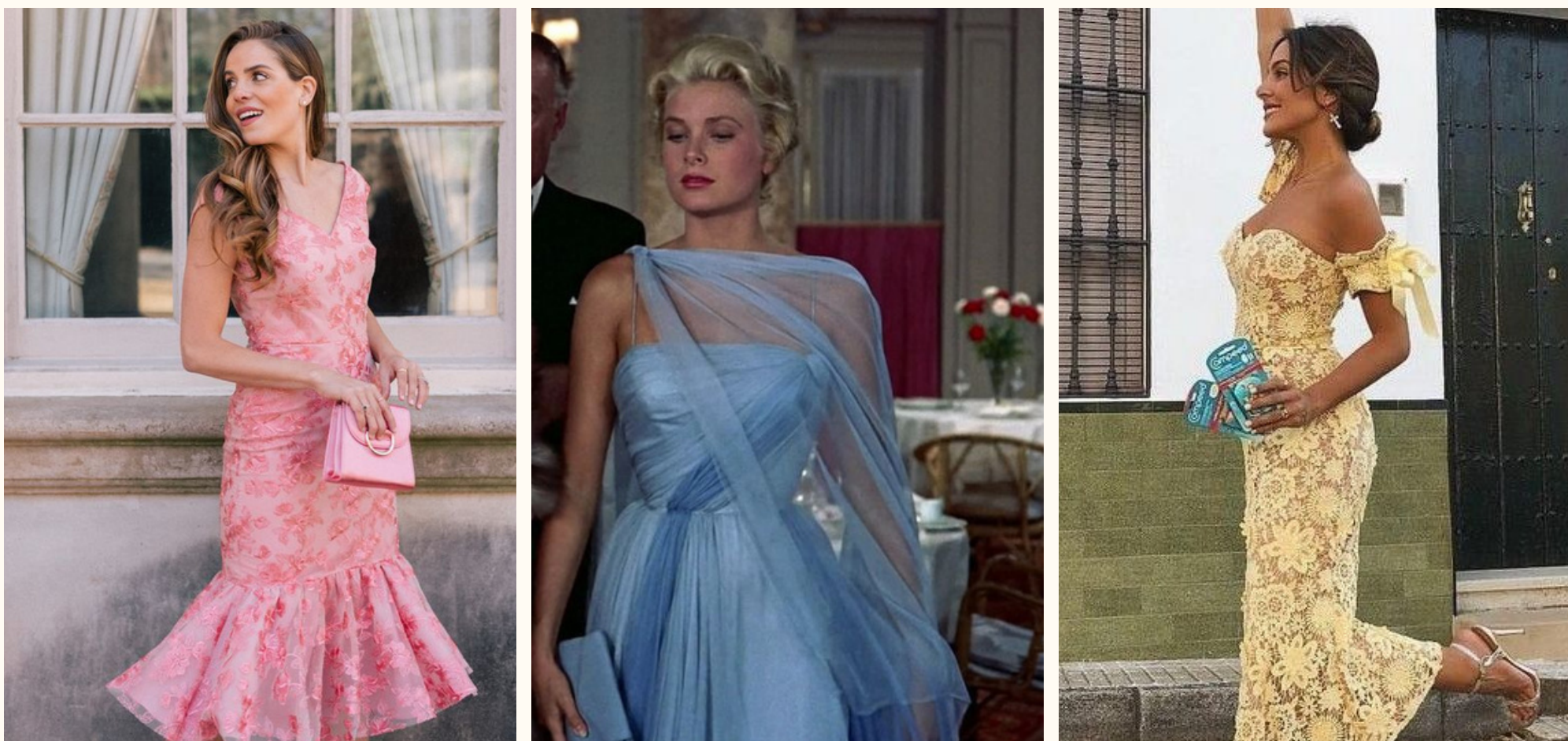




# The Feminine

Soft and romantic. Her style is a reflection of her gentle and nurturing personality, always leaving a trail of sweetness in her wake.

Example: Grace Kelly.



## Her Style

Her style can be described as girly, romantic, floral, light-feminine, youthful, soft, delicate, flowy, ethereal, and vintage-inspired.

## Her Wardrobe

Her wardrobe features delicate fabrics, pastel colors, and feminine silhouettes. Lace, floral patterns, and subtle ruffles contribute to the romantic aesthetic. Blush tones are often incorporated. Examples include flowy maxi dresses, lace blouses, pastel-colored skirts, embroidered cardigans, floral patterned scarves, vintage-inspired handbags, ruffled blouses, wrist accessories, wrap dresses, skirts with a defined waist, silk blouses, sheer fabrics, and polka dot patterns.





# The Sexy

Unapologetically bold and confident, the sexy elegant lady knows how to turn heads. Her style features sultry silhouettes, bold colors, and just the right amount of allure.

Example: Marilyn Monroe.



## Her Style

Her style can be described as seductive, provocative, alluring, dark-feminine, confident, sultry, daring, self-assured, femme fatale, spicy, powerful, captivating, and bold.

## Her Wardrobe

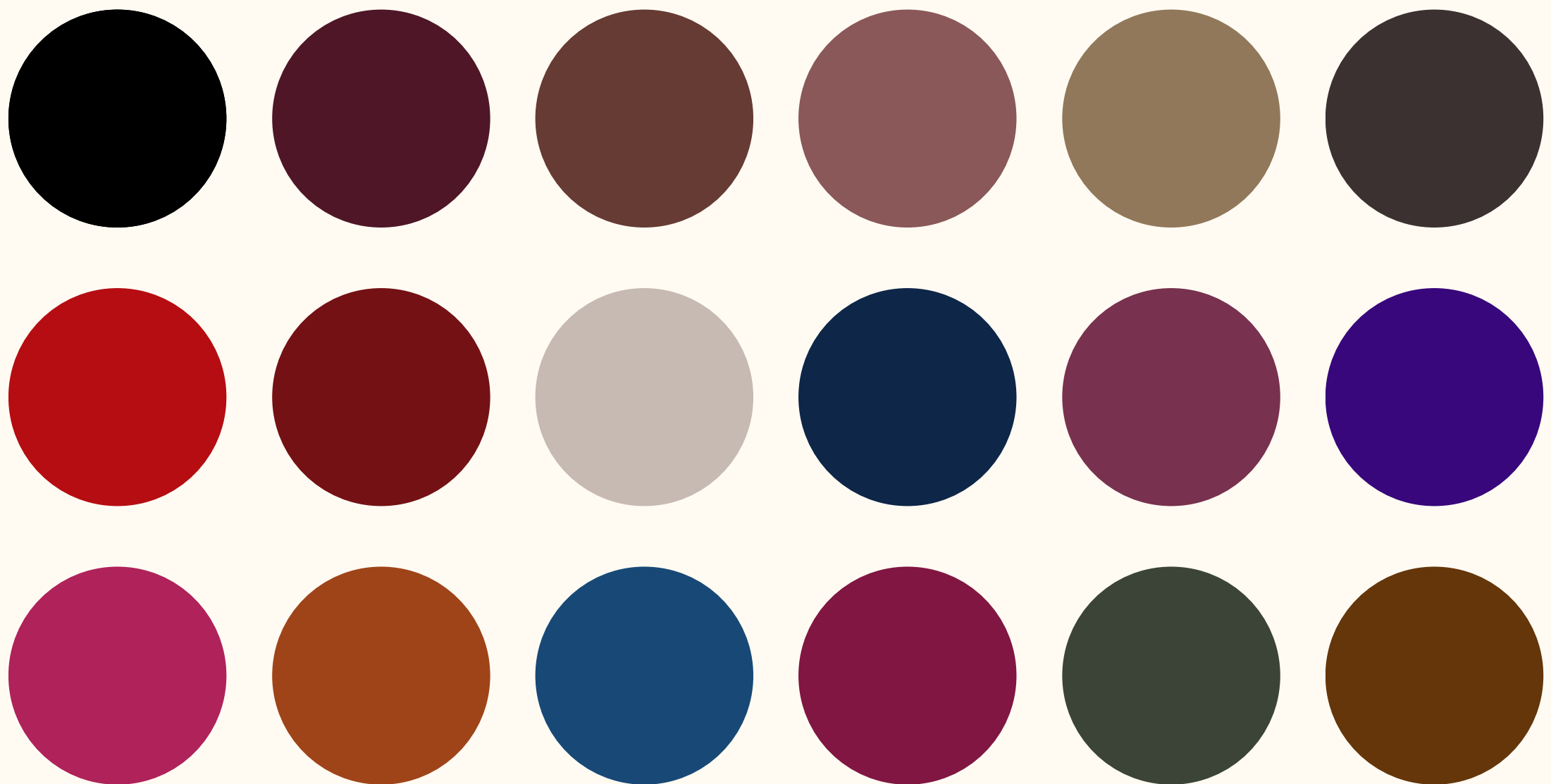
Her wardrobe is filled with daring and bold choices that exude confidence and allure. It features sultry silhouettes, such as figure-hugging dresses and tailored ensembles that accentuate curves. Examples include sultry bodycon dresses, figure-hugging jumpsuits, tailored blazers with a defined waist, vibrant-hued evening gowns, deep-toned blouses, plunging neckline tops, open-back cocktail dresses, high-waist pants, long gloves, and stockings.



# Her Mood Board



# Her Colors



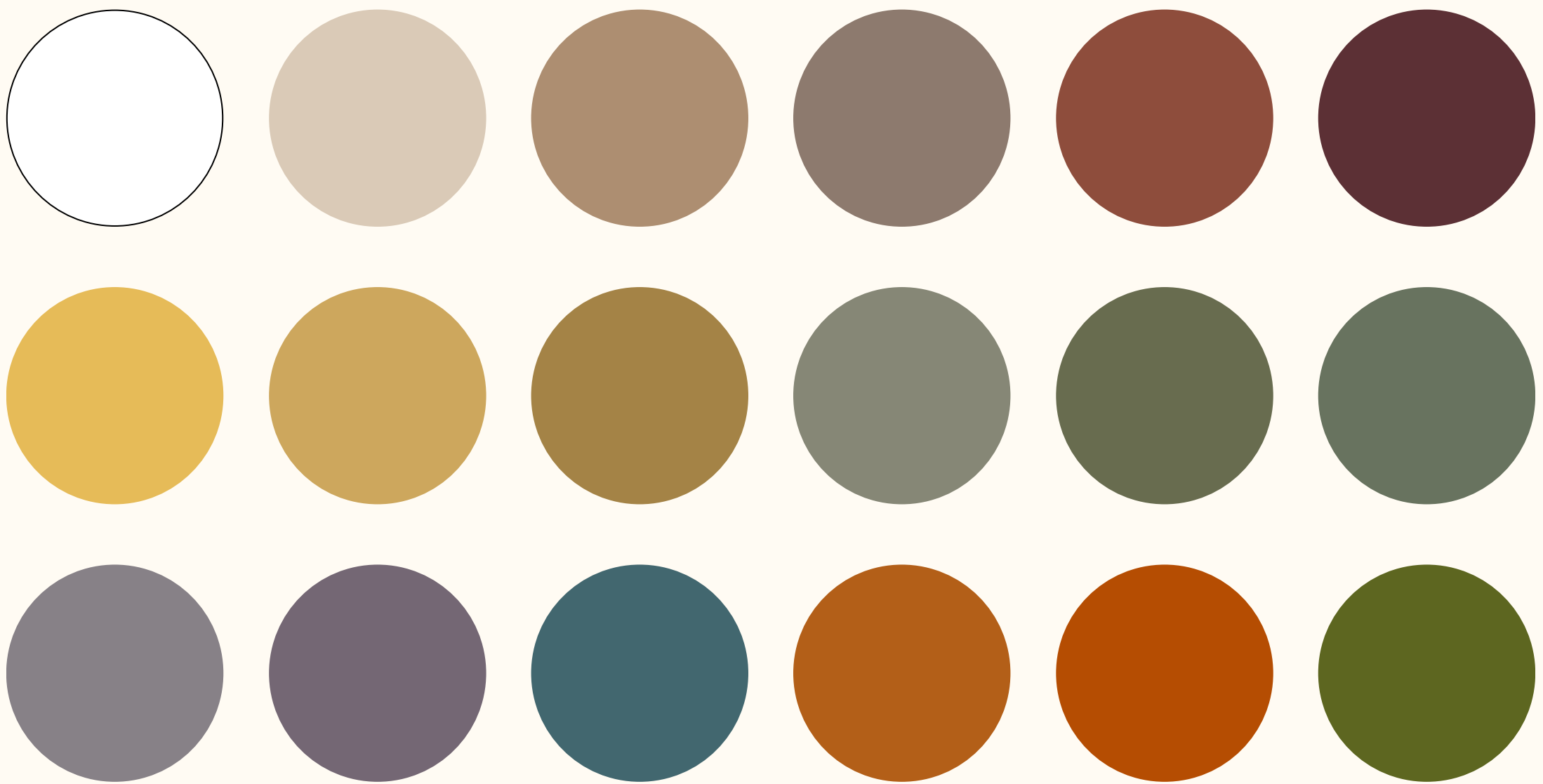




# Her Mood Board



# Her Colors





# The Creative

AKA the Fashionista. An artist at heart, the creative elegant lady embraces unconventional styles, mixing and matching to create her unique look.

Example: Victoria Beckham.



## Her Style

Her style can be described as fashionable, creative, unconventional, modern, fashion-forward, artistic, bold, edgy, expressive, coordinated, avant-grade, and androgynous.

## Her Wardrobe

Her wardrobe is a canvas for her imagination, embracing unconventional styles and mixing and matching to create a uniquely artistic look. Examples include statement jackets, art-inspired prints, bold accessories, mix-and-match patterns, avant-garde silhouettes, eclectic maxi dresses, suits, wide-brimmed hats, asymmetric styles, artistic jewelry, vintage pieces, edgy leather items, and quirky handbags.



# Her Mood Board



# Her Colors





# Elegance Type Quiz

Answer the following questions by selecting the letter that resonates with you the most. Choose one answer only.

## 1. COLOR PALETTE:

- A. Neutrals and classics
- B. Soft and pastels
- C. Bold and dark
- D. Earthy and neutral
- E. Colorful mix

## 2. SILHOUETTES:

- A. Well-tailored and timeless
- B. Flowy and feminine
- C. Daring and figure-hugging
- D. Comfortable and relaxed
- E. Unconventional and artistic

## 3. ACCESSORIES:

- A. Pearls, classic jewelry
- B. Floral scarfs, bows
- C. Long gloves, stockings
- D. Minimalist accessories
- E. Unique, bold pieces

## 4. FOOTWEAR:

- A. Pumps or ballet flats
- B. Flats or sandals
- C. High heels
- D. Casual sneakers/boots
- E. Statement footwear

## 5. PREFERRED ENVIRONMENT:

- A. Upscale & sophisticated
- B. Girly & natural
- C. Bold & energetic
- D. Natural & athletic
- E. Creative & dynamic

## RESULTS:

Mostly A's: You're a Classic Elegant.  
 Mostly B's: You're a Feminine Elegant.  
 Mostly C's: You're a Sexy Elegant.  
 Mostly D's: You're a Natural Elegant.  
 Mostly E's: You're a Creative Elegant.

If your results don't have a letter that repeats at least 3 times, you probably belong to multiple elegance categories and aren't limited to just one.



# Your Signature Style

## 1. Identify Your Elegance Type(s)

Explore each of the 5 elegant style types and recognize which resonates with you the most. If you find alignment with a single type, make that your primary focus to grow and develop. If you resonate with more than one, take note of specific elements you like from each type, whether it's the colors, accessories, or clothing items.



## 2. Do a Lifestyle Audit

Evaluate your daily activities, profession, and social life. Your signature style should be a combination of your primary, secondary, and tertiary activities. This is also known as the 50/30/20 personal branding rule which I explain in depth in my online [elegance course](#).

## 3. Reflect on Your Personality

Think about your personality traits. Are you outgoing or introverted, creative or analytical? Your style should reflect these aspects of your personality. If you're an adventurous spirit, consider incorporating bold colors and unique accessories. If you have a more reserved personality, opt for classic and understated pieces.





# Next Steps

If you found this ebook insightful and valuable, that means you're ready to learn more advanced concepts about elegance and personal image.

Your next step is to take the “Little Miss Elegant” Course, where you'll learn how to transform your image step-by-step through color analysis, body analysis, capsule wardrobe curation, and personal brand development.

Get ready to turn yourself into an elegant lady and transform your image 180 degrees.

**TRANSFORM MY IMAGE**

