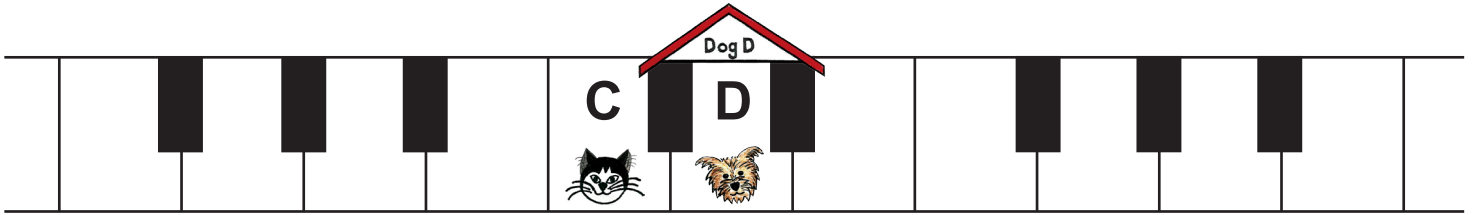
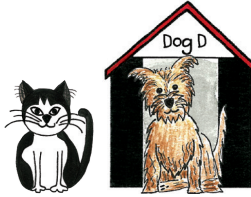


1. The Boy and His Pets

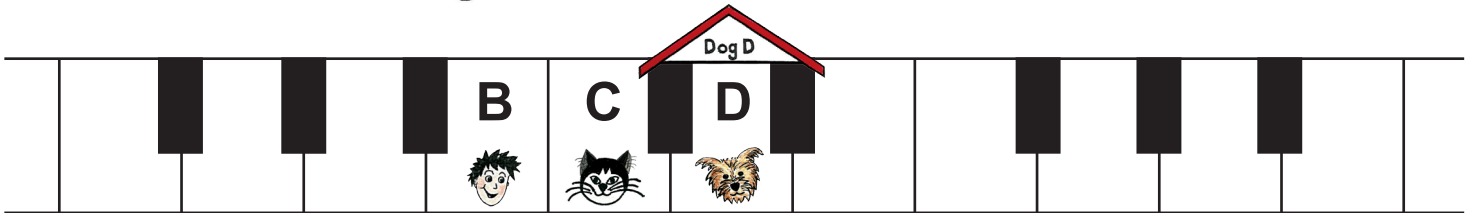
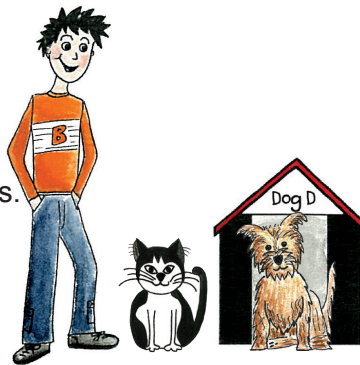
This is **Dog D**. He is in his dog house, which has two black stripes.




His best friend is **Cat C**. She always sits beside him.




Cat C and Dog D are owned by **Boy B**. He really loves his pets.



 On the keyboard below: Write a Dog D in every dog house.
Write a Cat C beside every Dog D.
Write a Boy B beside every Cat C.



 How many black stripes does Dog D's dog house have? _____

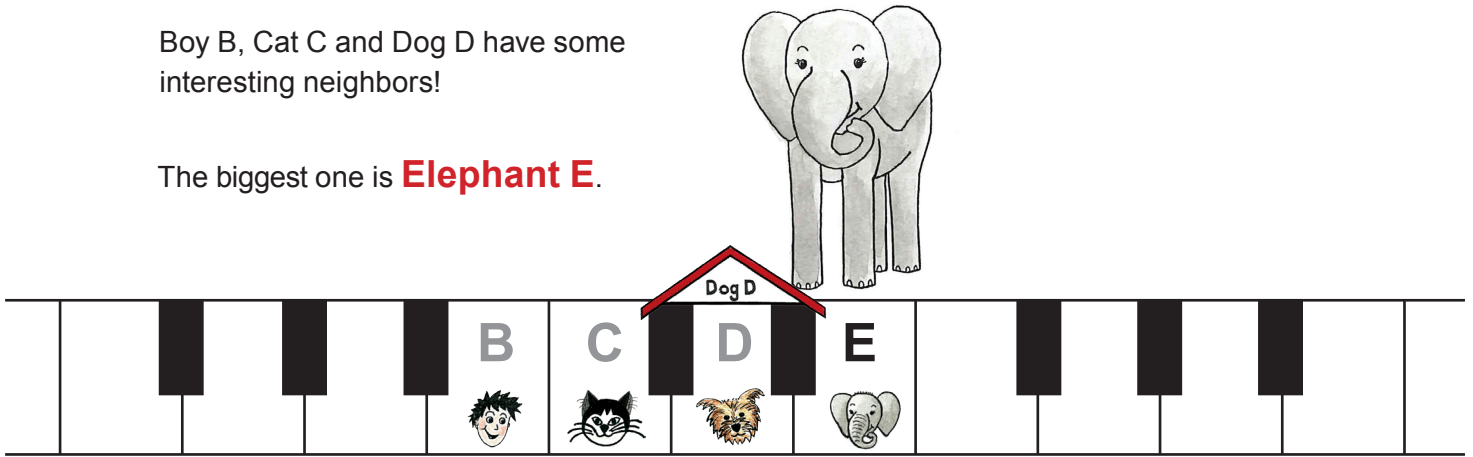
You could also do Easy Beats 1 (in the last section of this book)



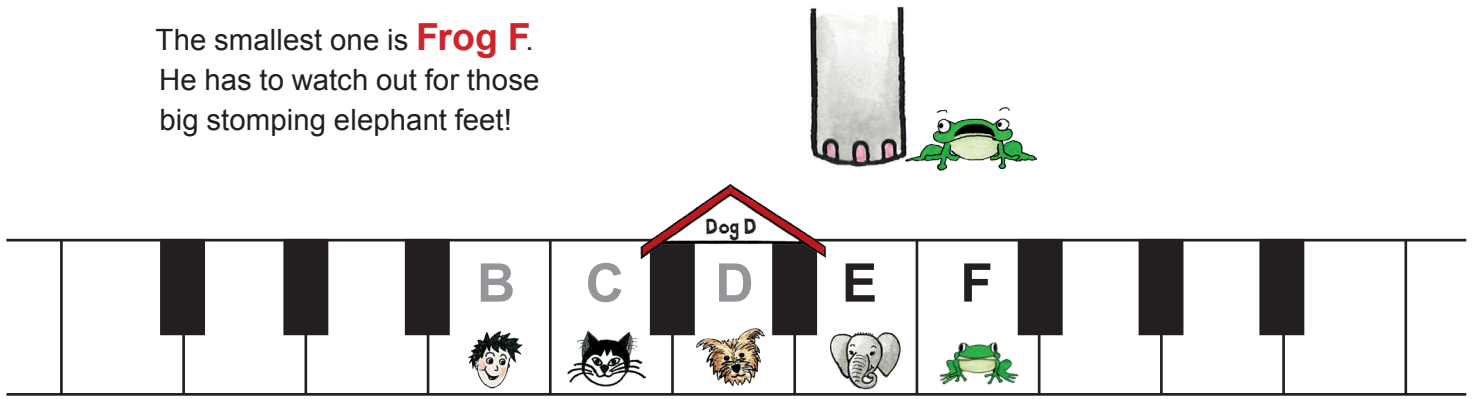
2. The Girl and Her Pets

Boy B, Cat C and Dog D have some interesting neighbors!

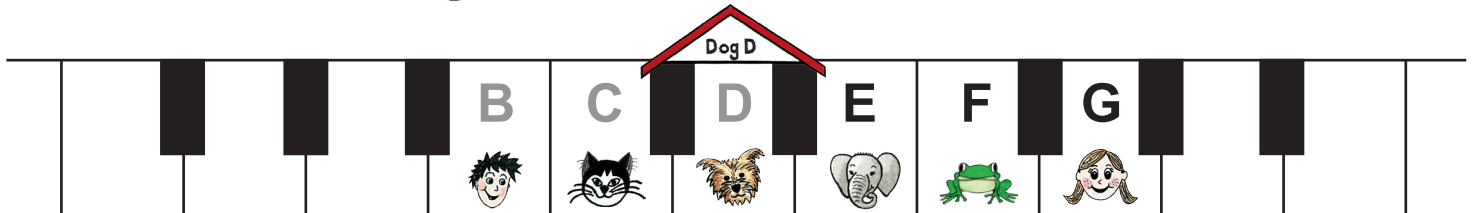
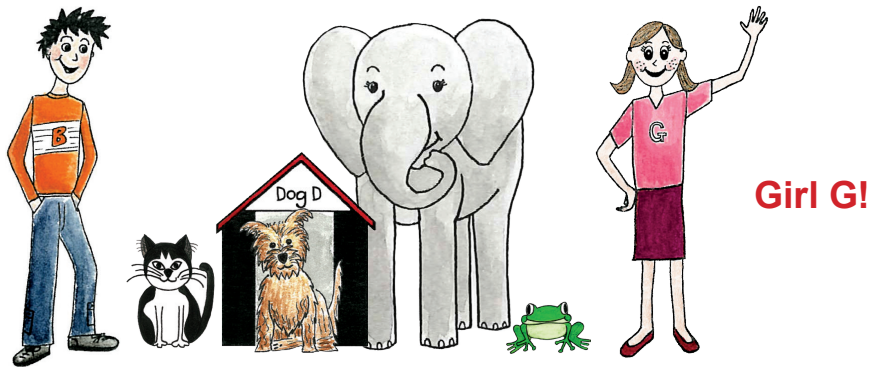
The biggest one is **Elephant E**.



The smallest one is **Frog F**.
He has to watch out for those big stomping elephant feet!



And who do these two unusual pets belong to?



On the keyboard below: Draw a roof on each dog house.
Write in every Boy B, Cat C and Dog D.
Now write in every Elephant E, Frog F and Girl G.

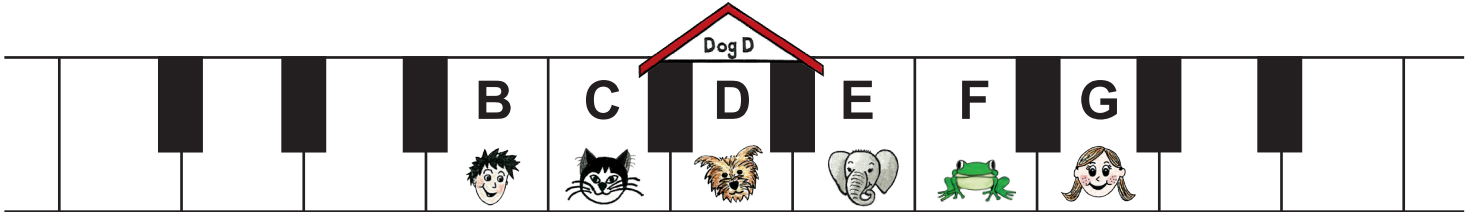
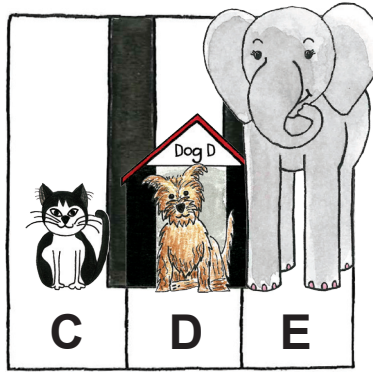


How many pets do Boy B and Girl G have? ____

3. Name These Notes

Elephant E is so nosy.

She loves to stand right next to the dog house and look over the roof to see what Cat C and Dog D are doing.



Draw a roof on each dog house, and write in every:

Cat C
Dog D
Elephant E



Draw a roof on each dog house, and write in every:

Elephant E
Frog F
Girl G



Draw a roof on each dog house, and write in every:

Boy B
Cat C
Dog D



Draw a roof on each dog house, and write in every:

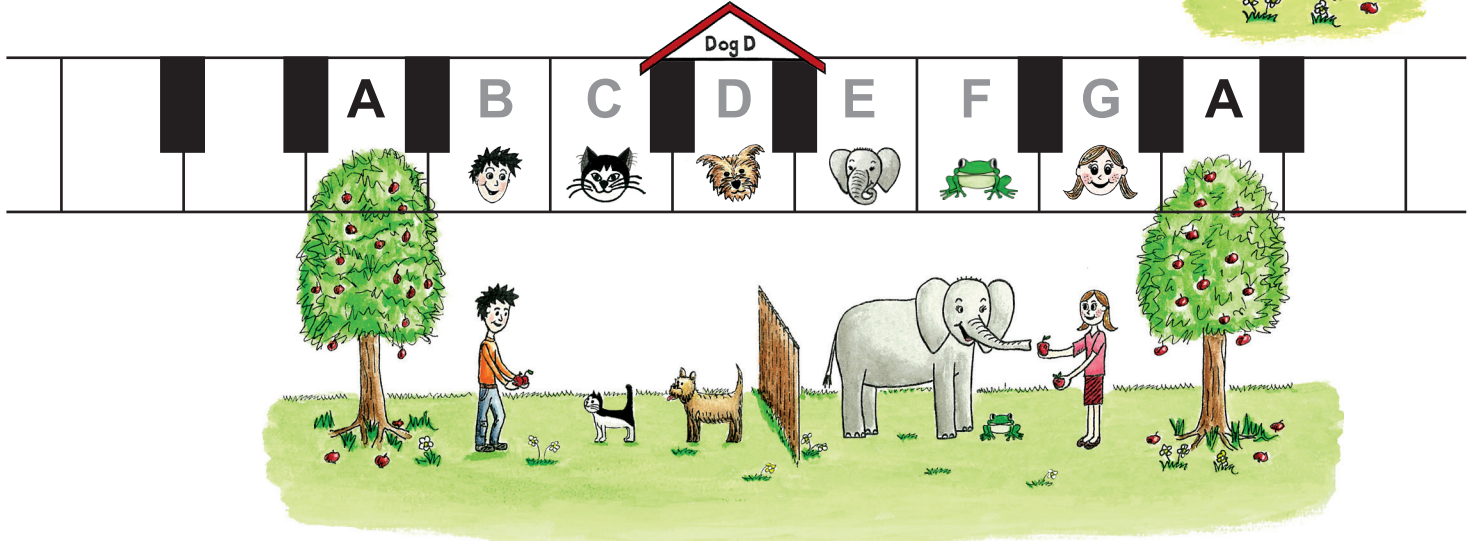
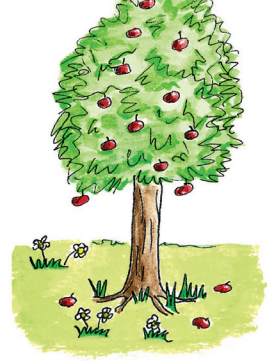
Boy B
Dog D
Elephant E
Girl G



You could also do Easy Beats 2

4. The Pets Get a Special Treat

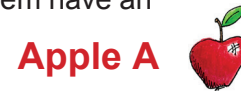
In their backyards, Boy B and Girl G both have **Apple Trees** which grow the most yummy, tasty apples you ever did taste!




If Cat and Dog have been good, Boy B lets them have an




If Elephant and Frog have been good, Girl G lets them have an



 On the keyboard below: Draw a roof on each dog house. Write in every Boy B and Girl G. Write in every Apple A. Which two notes are on each side of Apple A? _____ and _____



 On the keyboard below: Draw a roof on each dog house. Write in all the missing notes.




Now you know all the notes on the piano! They are in this pattern:

ABCDEF G ABCDEF G ABCDEF G



Say these letters out loud

 On the keyboard below: Draw a roof on each dog house. Write in all the notes.

Write all the notes!

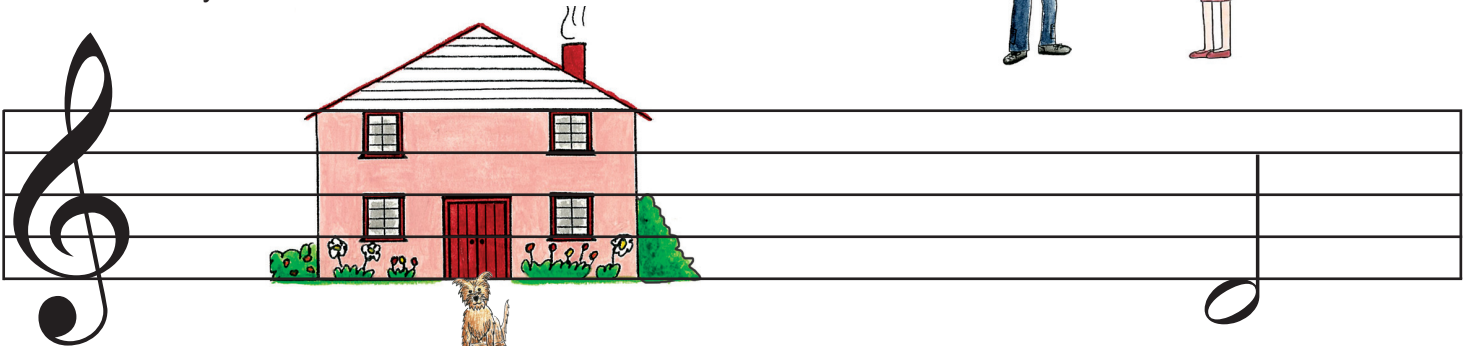


7. Neighbors on Treble Stave Street

Boy B and Girl G live in **Treble Stave Street**.

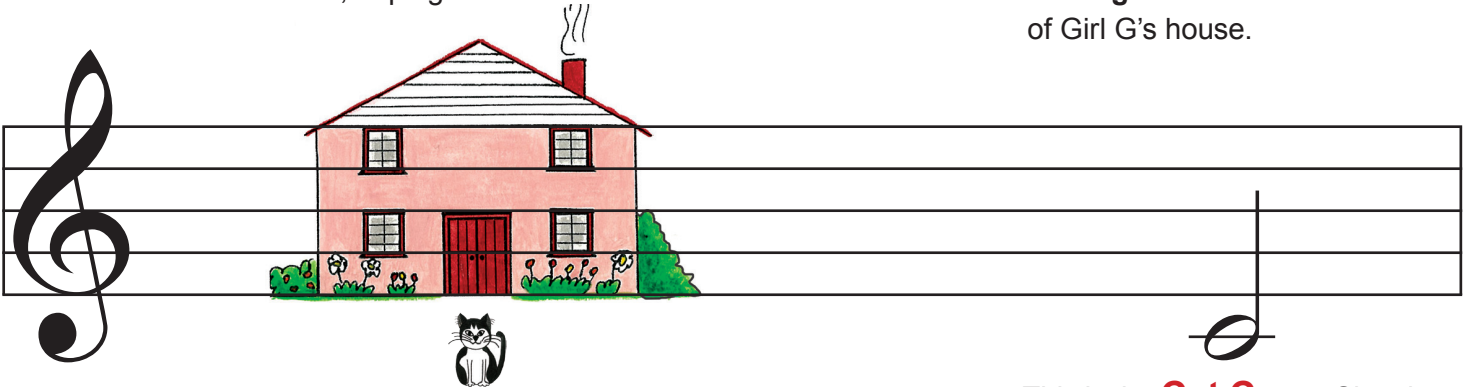


One day Boy B asked Girl G if she would look after his pets while he was away on holiday. "Sure!", she said, "But sorry, Mom is really fussy. They won't be allowed inside."



This is **Dog D** waiting at the front door of Girl G's house, hoping someone will let him in.

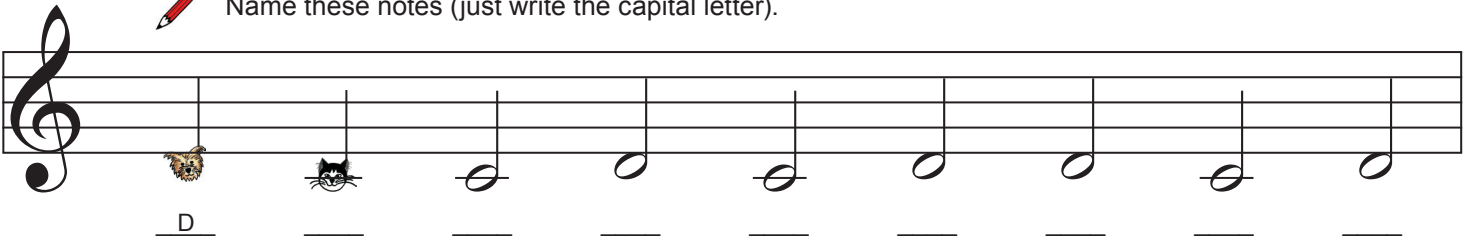
This is the **Dog D** note. He is **waiting below the bottom line** of Girl G's house.





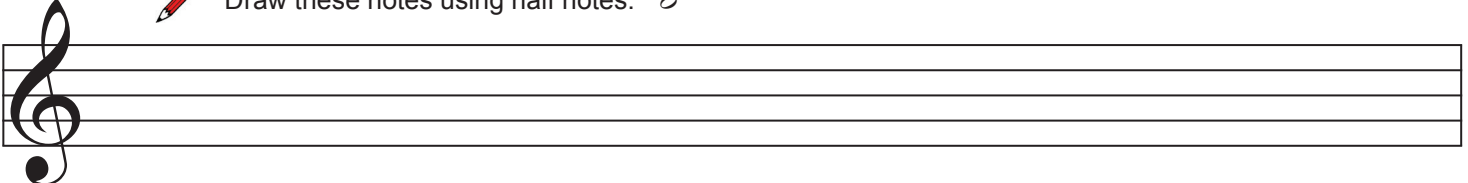
Cat C keeps Dog D company.

This is the **Cat C** note. She sits **below Dog D**, and has beautiful whiskers.

 Name these notes (just write the capital letter).



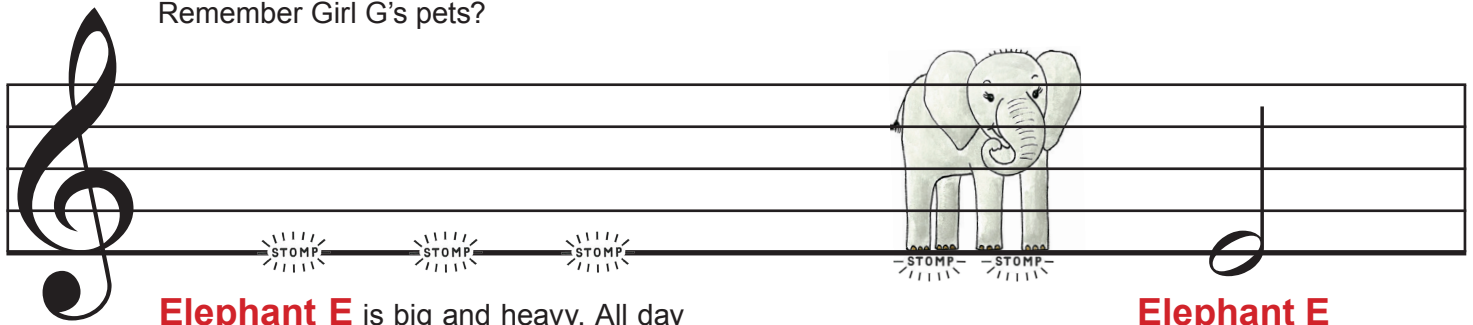
 Draw these notes using half notes. 



Dog D Cat C Dog D Cat C Cat C Dog D Cat C Dog D Dog D Cat C
 waiting below the bottom line below Dog D with whiskers waiting below the bottom line below Dog D with whiskers

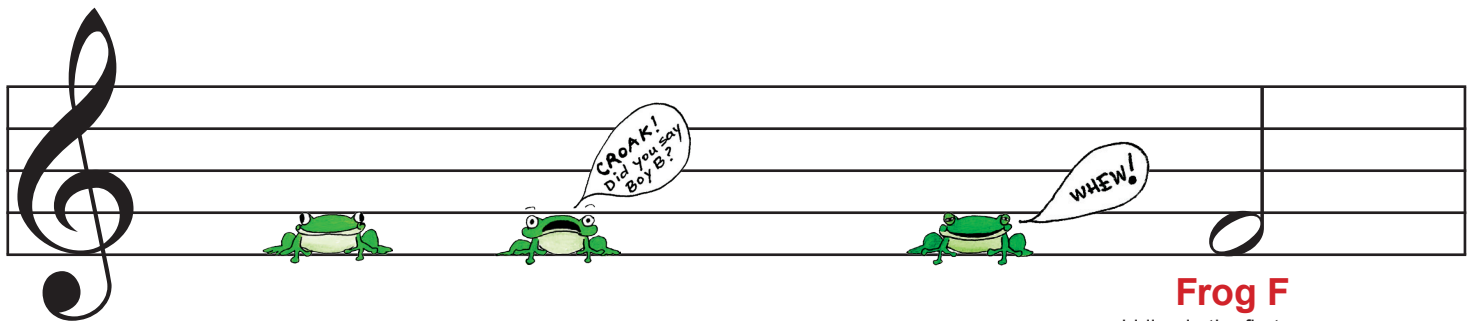
8. Neighbors on Treble Stave Street (2)

Remember Girl G's pets?



Elephant E is big and heavy. All day long you can hear her **stomping on the bottom line** of Treble Stave Street.


Elephant E
stomping on the bottom line





Frog F is **hiding in the first space**. He likes to hide here from Boy B.

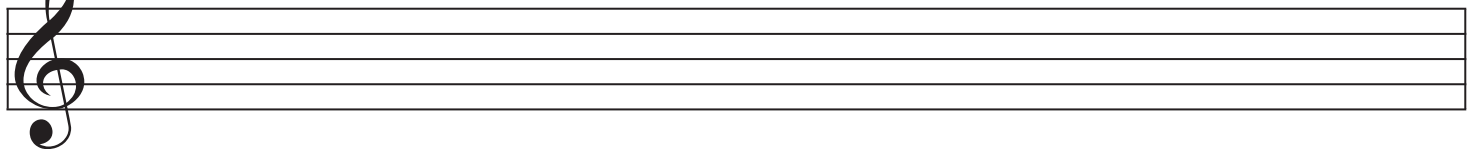
Frog F
hiding in the first space

"Hey, Frog F, it's OK! Boy B will never find you if you keep **hiding in the first space!**"


 Name these notes (just write the capital letter).



 Draw these notes using half notes. 



Frog F hiding in the first space **Elephant E** stomping on the bottom line **Frog F** hiding in the first space **Elephant E** stomping on the bottom line **Cat C** below Dog D with whiskers **Dog D** waiting below the bottom line **Frog F** **Elephant E** **Dog D**

 Name these notes:





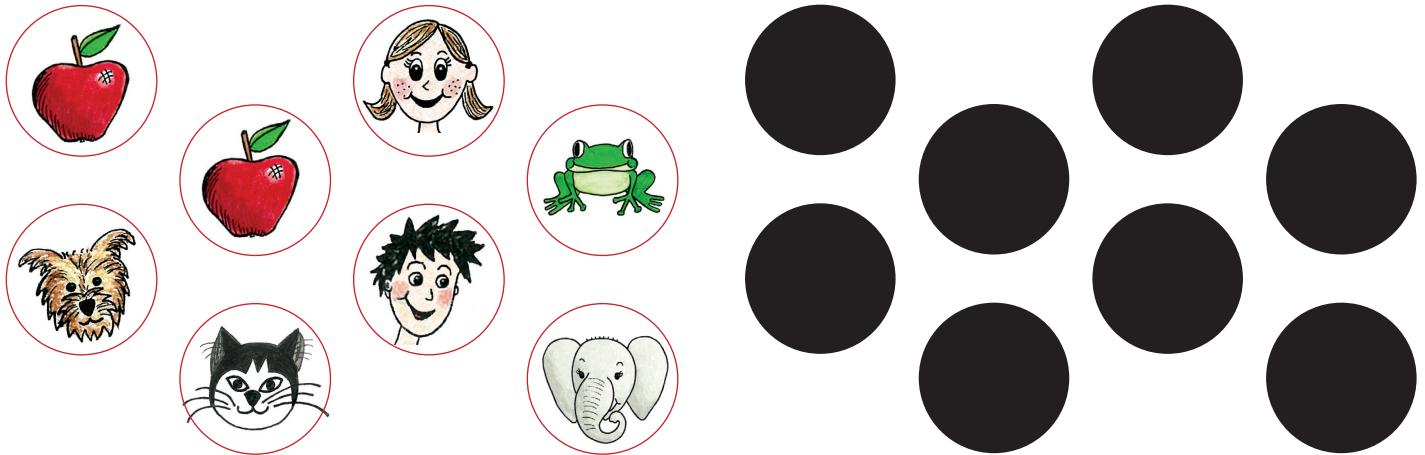
A musical staff consisting of five horizontal lines. A large black treble clef is positioned on the left side, spanning across the first three lines. A single horizontal line is drawn across the staff, positioned between the second and third lines.



A musical staff consisting of five horizontal lines. A large black bass clef is positioned on the left side, spanning across the bottom three lines. Two solid black dots are placed on the staff, one on the second line and one on the third line.



Character Magnets



Instructions

Print and cut the story characters.

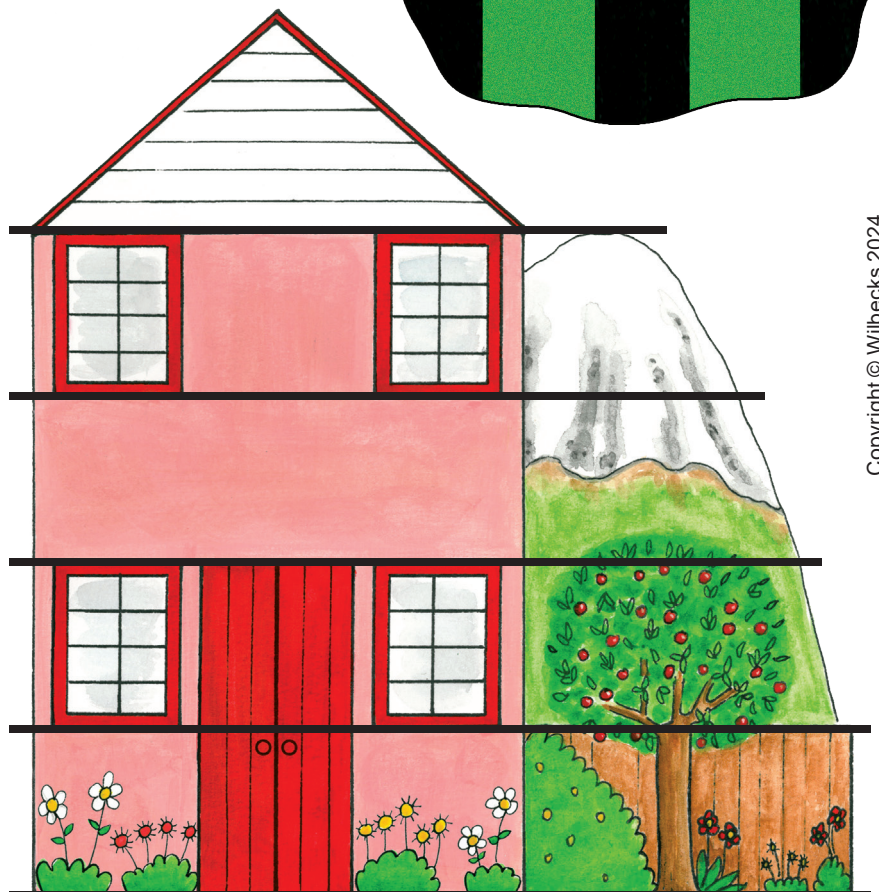
I strongly recommend that you fix the story characters and dog house to corrugated cardboard to prevent loss of characters between the keys of the piano.

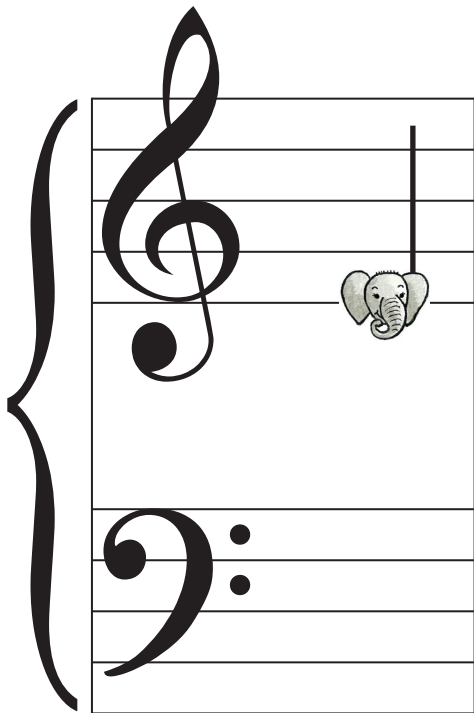
Disclaimer

Use at your own risk. I am not liable, not responsible and do not assume obligation for the use or misuse of the resources provided, any loss suffered or damage incurred.

Flashcard Instructions

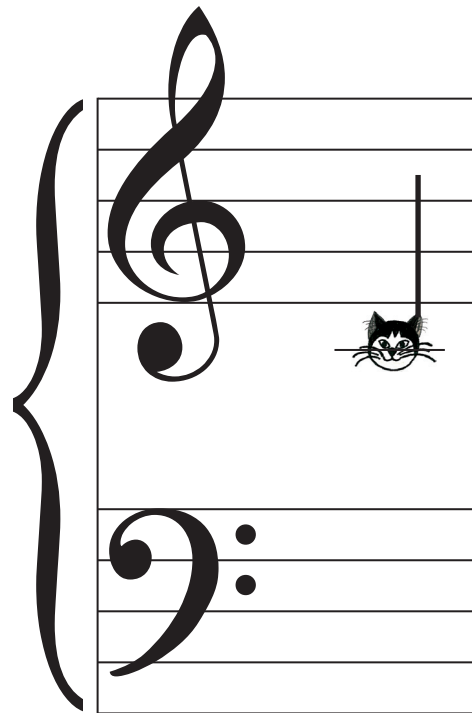
Glue the two flashcard pages together, then cut along the dotted lines. This will give you four double-sided flashcards.





1. on the bottom line
2. big on the bottom line

Ans: E (Elephant E)



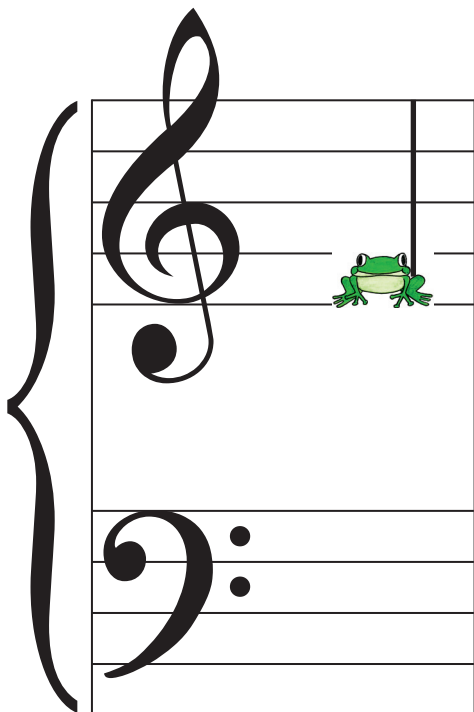
Instructions:

Show the child the note. If the child cannot say the answer, read line 1. If the child still cannot answer, read line 2. If the child needs further help, turn the flashcard over and show the picture while covering the answer.

Prompt:

1. with whiskers
2. lower than Dog D, with whiskers

Ans: C (Cat C)



1. first space
2. hiding in the first space

Ans: F (Frog F)



1. just below the bottom line
2. just below the bottom line of Girl G's house

Ans: D (Dog D)

