

**FUSO**

2024

Prepared for  
Transport Managers & Professional Drivers

# The Ultimate Guide to Maximizing Fuel Efficiency & Maintaining Your FUSO FN62

Welcome to the Ultimate Guide to Maximizing Fuel Efficiency and Maintaining Your FUSO FN-62! In this comprehensive eBook, you'll discover practical strategies and expert tips to optimize the performance of your FUSO FN-62 truck while minimizing fuel costs and ensuring long-term reliability.



[www.crater-group.com](http://www.crater-group.com)

# MESSAGE FROM TEAM HEAD

## CRAFTING SOLUTIONS, DELIVERING SUCCESS

Dear Transport Managers and Professional Drivers,

It is with great pleasure that I extend a warm welcome to you as we embark on this journey together. At Crater Automobiles (NBI) Ltd, we understand the pivotal role that transport managers and professional drivers play in the success of our industry. Your dedication, expertise, and commitment to excellence are the driving forces behind the smooth operation of our transportation networks.



As Team Leader of Crater Automobiles (NBI) Ltd in Nairobi, I am proud to introduce you to our latest resource, "The Ultimate Guide to Maximizing Fuel Efficiency and Maintaining Your FUSO FN627." This eBook is a testament to our shared goal of optimizing performance, enhancing efficiency, and ensuring the reliability of our vehicles.

Transport managers, your strategic oversight and logistical prowess are instrumental in coordinating fleets, optimizing routes, and maximizing productivity. Professional drivers, your skill, precision, and safety-conscious approach are the backbone of our operations, ensuring timely deliveries and customer satisfaction.

I invite you to delve into the pages of this eBook, where you will find valuable insights, practical tips, and expert advice to elevate your performance and drive success in your respective roles.

Whether it's mastering fuel-saving techniques, implementing proactive maintenance strategies, or accessing resources for continuous improvement, this eBook is designed to empower you every step of the way.

As we navigate the challenges and opportunities of the transportation industry together, know that Crater Automobiles (NBI) Ltd is committed to supporting you with innovative solutions, exceptional service, and unwavering dedication. Together, we will continue to raise the bar for excellence and drive towards a future of sustainable, efficient, and reliable transportation.

Thank you for your dedication, passion, and contributions to our industry. I look forward to our continued partnership and shared success.

Warm regards,

**Rose Muhura**  
Nairobi Team Leader  
Crater Group

**FUSO**



## **Fuso FN 62 6x4**

Driven by Success  
on Every Road.

**CARGO | LIVESTOCK | SAND HARVESTER**

## **UNMATCHED POWER AND EFFICIENCY**

With its robust 199 kW, 6-cylinder engine featuring direct injection turbo intercooling technology, the Fuso FN-62 ensures superior performance while maintaining lower fuel consumption, maximizing value on every journey.

## **UNIQUE FEATURES FOR ENHANCED RELIABILITY**

Discover the Fuso FN-62's unique selling points, including full air, dual-circuit, wedge-type drum brakes, ABS standard, and exhaust auxiliary brake. With high ground clearance, extended service intervals, and Euro 4 emissions compliance, enjoy improved fuel economy and maximum rugged reliability.

## **VERSATILE PERFORMANCE FOR ANY TERRAIN**

Equipped with a 9-speed transmission and diff lock, the Fuso FN-62 offers unparalleled flexibility to navigate even the most challenging off-road routes with ease and precision.

## **COMPREHENSIVE AFTERSALES SUPPORT**

Experience peace of mind with our comprehensive aftersales solutions at Crater Group. From routine servicing to engine overhauls, transmission repairs, and genuine parts supply, our skilled technicians ensure your Fuso FN-62 remains in peak condition. With an extensive network across Nakuru, Nairobi, Kisumu, and Eldoret, trust us for all your aftersales needs.



# TABLE OF CONTENTS

Message from Team Head	Page 3
Chapter 1: Understanding Fuel Efficiency	Page 6
Chapter 2: Fuel-saving Driving Techniques	Page 9
Chapter 3: Maintenance Tips for Fuel Efficiency	Page 13
Chapter 4: Maximizing Performance with Driver Training	Page 18
Chapter 5: Spare Parts Management and Availability	Page 21
Chapter 6: Warranty and Service Support	Page 24
Chapter 7: Finance Options and Cost-saving Strategies	Page 27
Conclusion	Page 30
Appendix	Page 31
Driven by Success	Page 33
Professional Team	Page 34



# EURO4

The Fuso FN-62's Euro 4 engine excels in efficiency, meeting strict emissions standards while maximizing fuel economy. Its advanced design ensures powerful performance with minimal environmental impact, making it an ideal choice for sustainable transportation.

# 26T

With a GVW of 26 tons, the Fuso FN-62 efficiently handles profitable loads, ensuring reliable delivery while minimizing costs. Transport managers rely on its robust design to streamline logistics and enhance profitability for commercial fleets.

# CHAPTER 1

## UNDERSTANDING FUEL EFFICIENCY

Fuel efficiency is a critical factor in the success of any commercial trucking operation. It directly impacts operating costs, environmental sustainability, and overall profitability. In this chapter, we'll delve into the importance of fuel efficiency, explore the factors that affect fuel consumption, and provide an overview of the fuel-efficient engine technology utilized in the FUSO FN-62 truck used in cargo, livestock and other applications.

### Importance of Fuel Efficiency in Commercial Trucking:



#### COST SAVINGS

Fuel expenses constitute a significant portion of the operating costs for trucking companies. Improving fuel efficiency can lead to substantial cost savings over time, enhancing the bottom line.



#### ENVIRONMENTAL IMPACT

Reduced fuel consumption results in lower greenhouse gas emissions, contributing to environmental sustainability and compliance with regulatory standards.



#### COMPETITIVE ADVANTAGE

Trucking companies that prioritize fuel efficiency can gain a competitive edge by offering cost-effective transportation services and attracting environmentally conscious customers.



# CHAPTER 1

## UNDERSTANDING FUEL EFFICIENCY

### Factors Affecting Fuel Consumption:



#### DRIVING BEHAVIOR

Aggressive driving, such as rapid acceleration and excessive idling, can significantly increase fuel consumption. Encouraging fuel-efficient driving habits among drivers is crucial for optimizing fuel efficiency.



#### VEHICLE DESIGN & MAINTENANCE

The design and condition of the vehicle play a crucial role in fuel efficiency. Factors such as aerodynamics, engine efficiency, tire condition, and vehicle weight can impact fuel consumption.



#### ROUTE PLANNING

Efficient route planning can minimize fuel consumption by reducing unnecessary mileage, avoiding traffic congestion, and optimizing delivery schedules.



#### LOAD MANAGEMENT

Properly managing cargo loads to avoid overloading and distributing weight evenly can improve fuel efficiency and prevent unnecessary strain on the engine.



# CHAPTER 1

## UNDERSTANDING FUEL EFFICIENCY

### OVERVIEW OF FUSO FN-62'S 6M60 FUEL-EFFICIENT ENGINE TECHNOLOGY:

The FUSO FN-62 cargo truck is equipped with state-of-the-art engine technology designed to optimize fuel efficiency without compromising performance.

Key features of the FUSO FN-62's fuel-efficient engine include:



1

#### Advanced Fuel Injection System

The engine utilizes a sophisticated fuel injection system that precisely controls the fuel delivery process, ensuring optimal combustion efficiency and minimal wastage.

2

#### Turbocharging and Intercooling

Turbocharging and intercooling technologies enhance engine power and efficiency by maximizing air intake and combustion efficiency.

3

#### Efficient Powerhouse

The FN-62 offers unmatched efficiency and power, ideal for businesses prioritizing sustainability. Every mile is economical and eco-friendly, from urban streets to long-haul routes.

4

#### Engine Management System

The FUSO FN-62's engine management system utilizes advanced sensors and algorithms to continuously monitor and adjust engine parameters for optimal fuel efficiency and performance.

By leveraging these advanced technologies, the FUSO FN-62 delivers impressive fuel efficiency while meeting the rigorous demands of commercial trucking operations.

# CHAPTER 2

## FUEL-SAVING DRIVING TECHNIQUES



In this chapter, we'll explore practical strategies and tips to help drivers optimize fuel consumption while operating the FUSO FN-62 truck.

### Efficient Acceleration & Deceleration Methods:

#### 02. Anticipate Stops

Anticipating upcoming stops and traffic signals allows drivers to reduce speed gradually, minimizing the need for sudden braking and excessive fuel usage.

#### 01. Smooth Acceleration

Avoid rapid acceleration, which can lead to unnecessary fuel consumption. Encourage drivers to accelerate gradually, allowing the engine to reach its optimal operating speed efficiently.

#### 03. Engine Braking

Utilize engine braking techniques, such as downshifting and reducing throttle input, to slow down the vehicle while preserving fuel and minimizing brake wear.

# CHAPTER 2

## FUEL-SAVING DRIVING TECHNIQUES



Effective driving techniques play a crucial role in maximizing fuel efficiency and reducing operating costs for commercial trucking fleets.



Ask your Crater Group branch closest to you for Driving Training sessions

### Maintaining Optimal Speed and RPM

#### 02. Eco-Driving Speed

Identify the optimal speed range for fuel efficiency based on the FUSO FN-62's engine specifications. Encourage drivers to maintain speeds within this range whenever possible.

#### 01. Cruise Control

When appropriate, engage cruise control (if fitted) to maintain a consistent speed, optimizing fuel efficiency by avoiding unnecessary fluctuations in engine RPM.

#### 03. Avoid High RPM

Operating the engine at excessively high RPMs can significantly increase fuel consumption. Encourage drivers to shift gears efficiently and avoid unnecessary revving.

# CHAPTER 2

## FUEL-SAVING DRIVING TECHNIQUES



By implementing these fuel-saving driving techniques, drivers can maximize the fuel efficiency of their FUSO FN-62 truck while reducing operating costs and minimizing environmental impact.

### Effective Route Planning & Load Management

#### 02. Payload Optimization

Properly distribute cargo weight to maintain vehicle balance and stability while minimizing fuel consumption. Avoid overloading the vehicle, as excessive weight can significantly impact fuel efficiency.

#### 01. Shortest Route

Plan routes that minimize mileage and avoid congested traffic conditions whenever possible. Utilize GPS navigation systems with real-time traffic updates to optimize route selection.

#### 03. Time-of-Day Considerations

Consider traffic patterns and congestion levels when scheduling routes. Avoid peak traffic hours whenever possible to minimize idling time and fuel consumption.

# CHAPTER 2

## FUEL-SAVING DRIVING TECHNIQUES



We encourage ongoing training and awareness among drivers to ensure consistent adherence to fuel-efficient driving practices.

### Fuel-efficient Driving Habits

#### 02. Anticipative Driving

Plan ahead and adjusting driving behavior to minimize fuel consumption. This includes maintaining a steady speed, avoiding sudden acceleration or braking, and anticipating traffic conditions.

#### 01. Idle Reduction

Minimize idling time by turning off the engine during extended stops, such as rest breaks or loading/unloading activities. Idling consumes fuel without contributing to forward motion, leading to unnecessary wastage.

#### 03. Aerodynamic Efficiency

Maintain proper aerodynamic profile by closing windows and avoiding roof-mounted accessories that increase drag, thus improving fuel efficiency.

# CHAPTER 3

## MAINTENANCE TIPS FOR FUEL EFFICIENCY

In this chapter, we'll explore key maintenance practices and tips to optimize fuel efficiency and minimize operating costs.



Book our Multi-Point Inspection as a great way to keep on top of you truck!

### Regular Engine Maintenance and Inspections:



#### SCHEDULED SERVICE INTERVALS

Adhere to the manufacturer's recommended service intervals of every 10,000 kms for engine maintenance, including oil changes, filter replacements, and tune-ups. Regular servicing helps ensure optimal engine performance and fuel efficiency.



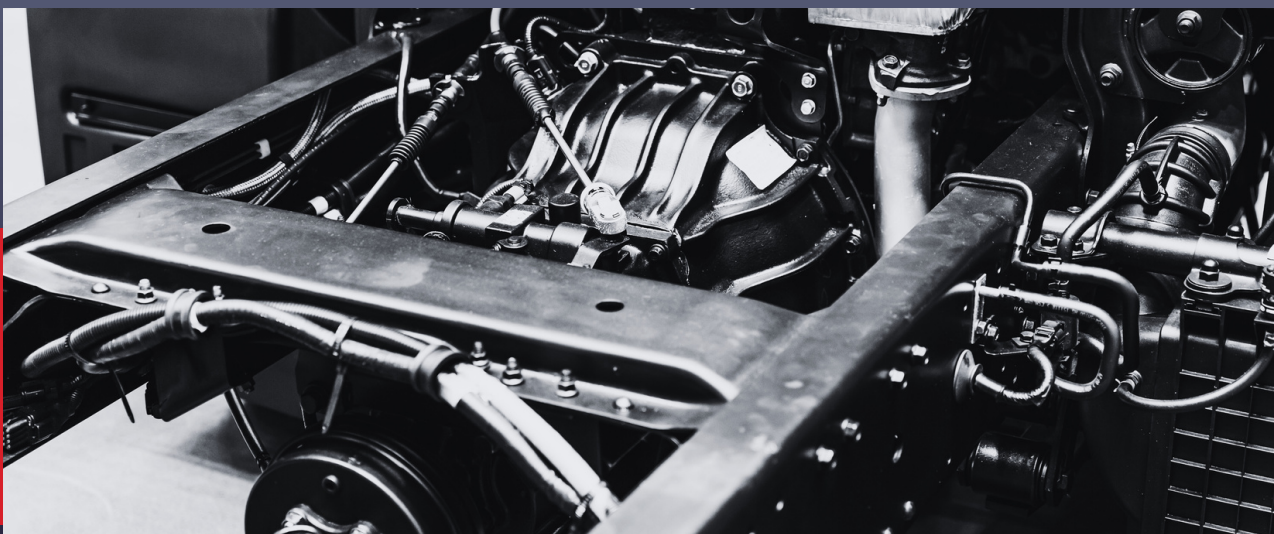
#### MONITOR FLUID LEVELS

Regularly check and maintain proper levels of engine oil, coolant, and other essential fluids. Low fluid levels can lead to increased friction and reduced engine efficiency.



#### INSPECT FUEL SYSTEM

Periodically inspect the fuel system for leaks, clogs, or other issues that can affect fuel delivery and combustion efficiency. Replace fuel filters as recommended to maintain clean fuel flow.



# CHAPTER 3

## MAINTENANCE TIPS FOR FUEL EFFICIENCY

Proper maintenance is essential for maximizing fuel efficiency and ensuring the long-term performance and reliability of the FUSO FN-62 truck.

### Proper Tire Inflation and Alignment:



#### OPTIMAL TIRE PRESSURE

Maintain proper tire inflation levels according to the manufacturer's recommendations. Underinflated tires increase rolling resistance, leading to higher fuel consumption. Use a tire pressure gauge to check tire pressure regularly.



#### WHEEL ALIGNMENT

Ensure that the wheels are properly aligned to minimize tire wear and reduce rolling resistance. Misaligned wheels can cause uneven tire wear and increase fuel consumption.



# CHAPTER 3

## MAINTENANCE TIPS FOR FUEL EFFICIENCY

Regularly maintaining clean air filters and monitoring fluid levels is crucial for vehicle efficiency. Stay proactive with these maintenance tasks to keep your vehicle running smoothly and efficiently.



Booking our Multi-Point Inspection is a great way to keep on top of you truck!

### Clean Air Filters and Fluid Levels:



#### AIR FILTER MAINTENANCE

Regularly inspect and clean or replace the air filter as needed. A dirty or clogged air filter restricts airflow to the engine, reducing combustion efficiency and increasing fuel consumption.



#### CHECK FLUID LEVELS

Monitor levels of transmission fluid, brake fluid, and other essential fluids regularly. Low fluid levels can lead to increased friction and decreased efficiency in various vehicle systems.



# CHAPTER 3

## MAINTENANCE TIPS FOR FUEL EFFICIENCY

To maintain fuel efficiency and vehicle performance, manage weight and cargo load carefully. Avoid overloading to prevent strain on the engine and drivetrain, which increases fuel consumption. Distribute cargo weight evenly for stability and handling, enhancing safety and fuel economy.

### Optimize Vehicle Weight and Cargo Load:



#### AVOID OVERLOADING

Ensure that the cargo load does not exceed the vehicle's maximum payload capacity (Max GVW 26,000 kg). Overloading the vehicle puts unnecessary strain on the engine and drivetrain, leading to increased fuel consumption.



#### DISTRIBUTE WEIGHT EVENLY

Properly distribute cargo weight within the vehicle to maintain balance and stability. Uneven weight distribution can affect handling and fuel efficiency, particularly during cornering and braking.



# CHAPTER 3

## MAINTENANCE TIPS FOR FUEL EFFICIENCY

By following these maintenance tips and best practices, FUSO FN-62 owners can ensure optimal fuel efficiency, minimize operating costs, and prolong the lifespan of their Fuso trucks. Regular maintenance not only enhances fuel economy but also contributes to overall vehicle performance and reliability.

### Utilize Fuel-efficient Lubricants and Additives:



#### HIGH-QUALITY ENGINE OIL

Use high-quality, low-viscosity engine oil that meets the manufacturer's specifications. Premium engine oils reduce friction and improve engine efficiency, resulting in better fuel economy.



#### FUEL ADDITIVES

Consider using fuel additives designed to improve combustion efficiency and clean fuel injectors. Consult with your Service Advisor at one of Crater Group's 35 dealerships for advice on the most suitable additives for your FUSO FN-62.

**OUR PARTS ADVISORS WILL BE HAPPY TO HELP YOU WITH ENGINE OIL & SUPPLIES**



# CHAPTER 4

## MAXIMIZING PERFORMANCE WITH DRIVER TRAINING



In this chapter, we'll explore the importance of driver orientation and training programs, fuel-efficient driving practices, and techniques to monitor and improve driver performance.

### Importance of Driver Orientation and Training Programs

#### 02. Optimal Weight Operation

Training programs familiarize drivers with the features, controls, and capabilities of the FUSO FN-62, enabling them to maximize performance while minimizing fuel consumption and wear on vehicle components.

#### 01. Safety and Compliance

Comprehensive driver orientation programs ensure that drivers understand safety protocols, regulatory requirements, and best practices for operating the FUSO FN-62 safely and efficiently.

#### 03. Efficiency and Productivity

Well-trained drivers are equipped with the knowledge and skills to operate the vehicle efficiently, adhere to delivery schedules, and minimize idle time, ultimately enhancing productivity and profitability.

# CHAPTER 4

## MAXIMIZING PERFORMANCE WITH DRIVER TRAINING



Effective driver training is essential for maximizing fuel efficiency, promoting safe driving habits, and optimizing the performance of the FUSO FN-62 truck.



Ask your Crater Group branch closest to you for Driving Training sessions

### Fuel-efficient Driving Practices and Techniques

#### 02. Maintain Optimal Speed

Instruct drivers to maintain a consistent speed within the optimal range for fuel efficiency, avoiding unnecessary acceleration or speeding, which can lead to higher fuel consumption.

#### 01. Smooth Acceleration and Deceleration

Encourage drivers to accelerate and decelerate gradually, avoiding sudden movements that can increase fuel consumption and wear on the vehicle's engine and brakes.

#### 03. Minimize Idle Time

Emphasize the importance of minimizing idle time by turning off the engine during extended stops, such as rest breaks or waiting periods, to conserve fuel and reduce emissions.

# CHAPTER 4

## MAXIMIZING PERFORMANCE WITH DRIVER TRAINING



Effective driver training is a key factor in optimizing fuel efficiency, promoting safety, and maximizing the performance of the FUSO FN-62 truck. By investing in comprehensive orientation programs, promoting fuel-efficient driving practices, and monitoring driver performance, fleet operators can achieve significant cost savings and operational improvements.

### Monitoring and Improving Driver Performance

#### 02. Driver Feedback and Recognition

Establish a culture of continuous improvement by providing regular feedback to drivers on their performance, recognizing achievements, and incentivizing fuel-efficient driving behavior.

#### 01. Telematics and Fleet Management Systems

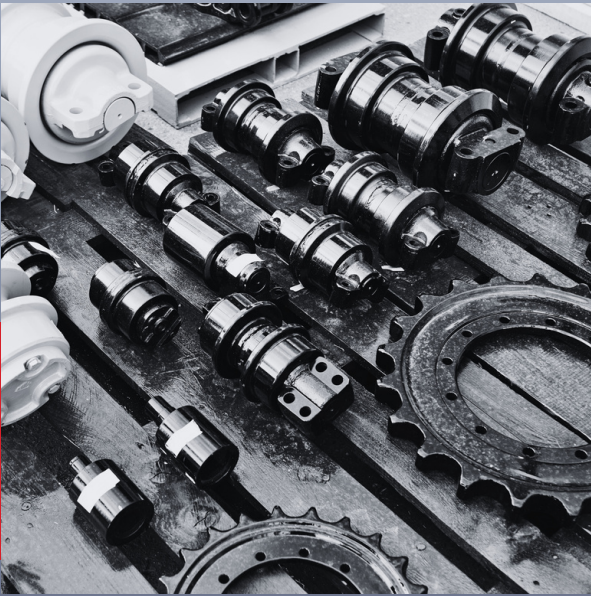
Implement telematics and fleet management systems to monitor driver behavior, track fuel consumption, and identify opportunities for improvement. Provide feedback and coaching to drivers based on performance data.

#### 03. Ongoing Training and Development

Offer periodic refresher training sessions and educational resources to keep drivers updated on best practices, new technologies, and fuel-saving techniques. Encourage drivers to share tips and insights with their peers.

# CHAPTER 5

## SPARE PARTS MANAGEMENT & AVAILABILITY



In this chapter, we'll explore the importance of accessible spare parts, tips for inventory management, and strategies to ensure quick turnaround time for repairs and maintenance.

### Understanding the Importance of Accessible Spare Parts

#### 02. Ensuring Reliability

FUSO Genuine Spare Parts are engineered to meet the manufacturer's specifications and quality standards, ensuring optimal performance, compatibility, and reliability for the FUSO FN-62.

#### 01. Minimizing Downtime

Availability of spare parts is crucial for minimizing downtime in the event of breakdowns or routine maintenance. Accessible spare parts at Crater Group locations enable prompt repairs, keeping your FUSO FN-62 operational and productive.

#### 03. Cost-effectiveness

Timely access to spare parts reduces repair lead times and associated costs, preventing delays in delivery schedules, downtime. Crater Group works to minimize downtime.

# CHAPTER 5

## SPARE PARTS MANAGEMENT & AVAILABILITY



Effective spare parts management is essential for ensuring minimal downtime, maximizing productivity, and maintaining the reliability of the FUSO FN-62 truck.

### Tips for Inventory Management

#### 02. Prioritize Critical Parts

Identifying critical components and prioritizing stocking them to minimize the impact of downtime on operations is a key factor our Parts Advisors are tasked with to ensure factors such as lead times, frequency of failures, and criticality to vehicle performance are measured and addressed.

#### 01. Maintain Adequate Stock Levels

We conduct regular assessments of spare parts usage and demand patterns to determine appropriate stock levels. We also keep essential spare parts in stock to address common repair needs promptly to keep your FUSO FN-62 moving.

#### 03. Utilize Just-in-Time Inventory

For fleets requiring bulk spare parts inventory, our Parts Advisors are happy to implement just-in-time inventory management practices to reduce your carrying costs and optimize inventory turnover. Talk to one of our Parts Advisors today for bulk supply.

# CHAPTER 5

## SPARE PARTS MANAGEMENT & AVAILABILITY



Effective spare parts management is essential for maintaining the reliability, productivity, and performance of the FUSO FN-62 cargo truck. By prioritizing accessibility, implementing sound inventory management practices, and ensuring quick turnaround time for repairs, fleet operators can minimize downtime and maximize operational efficiency.

### Ensuring Quick Turnaround Time for Repairs and Maintenance

#### 02. Service Network Accessibility

We have 4 authorized service centers and dealerships with a comprehensive inventory of spare parts for the FUSO FN-62. All our service centers are conveniently located on main highways for easy accessibility and equipped to handle repairs promptly.

#### 01. Streamlined Procurement Process

We have established efficient procurement processes to ensure timely acquisition of spare parts when needed. This ensures we are able to replenish and meet demand in a timely manner for your FUSO FN-62 trucking operations.

#### 03. Emergency Response Protocols

We encourage our customers to develop contingency plans and emergency response protocols to address unexpected breakdowns or urgent repair needs. We provide a list of emergency contacts to ensure that in the event your team is capable of reaching us for rapid assistance.

# CHAPTER 6

## WARRANTY AND SERVICE SUPPORT



In this chapter, we'll explore the warranty provisions, the importance of regular service and maintenance checks, and accessing service and support resources from FUSO dealerships.

### **Limited Manufacturer Warranty:**

1-Year or 100,000 kms whichever comes first on Engine, Gearbox, Diff.  
1-Year on batteries subject to testing by Chloride Exide.

## Overview of FUSO FN627's Warranty Coverage

### **02. Extended Warranty Options (market specific)**

FUSO may offer extended warranty options for additional coverage beyond the standard warranty period. Extended warranties provide added protection and peace of mind for owners, ensuring continued support for their investment.

### **01. Standard Warranty**

The FUSO FN-62 comes with a comprehensive standard warranty package, covering various components and systems for a specified period. Details of the warranty coverage, including duration and scope, are provided in the owner's manual and warranty documentation at hand over.

### **03. Warranty Exclusions**

It's essential for owners to be aware of any warranty exclusions or limitations that may apply. Certain conditions, such as improper use, neglect, or unauthorized modifications, may void warranty coverage for specific components or issues.

# CHAPTER 6

## WARRANTY AND SERVICE SUPPORT



The warranty coverage and service support provided by FUSO play a crucial role in ensuring peace of mind, reliability, and customer satisfaction for owners of the FN-62 cargo truck.

### Importance of Regular Service and Maintenance Checks

#### 02. Diagnostic Checks

Scheduled maintenance appointments provide an opportunity for diagnostic checks and system inspections by trained technicians at Crater Group. Diagnostic tools and equipment are used to identify any underlying issues or areas requiring attention, enabling timely repairs and adjustments.

#### 01. Preventive Maintenance

Regular service and maintenance checks are essential for identifying potential issues early, preventing costly breakdowns, and maximizing the lifespan of the FUSO FN-62. Adhering to the manufacturer's recommended service intervals of 10,000 kms is crucial for maintaining warranty coverage and ensuring optimal vehicle performance.

#### 03. Component Lubrication and Inspection

Service appointments typically include lubrication of moving parts, fluid level checks, and visual inspections of key components such as brakes, suspension, and steering systems. Any signs of wear or damage are addressed promptly to prevent further deterioration.

# CHAPTER 6

## WARRANTY AND SERVICE SUPPORT



The warranty coverage and service support provided by FUSO are integral to the ownership experience of the FN-62 cargo truck. By leveraging warranty provisions, prioritizing regular service and maintenance checks, and accessing service and support resources from authorized FUSO dealerships, owners can ensure the continued reliability, performance, and longevity of their vehicles.

### Accessing Service and Support Resources from FUSO Dealerships

#### 02. Genuine Parts Availability

Crater Group's Authorized FUSO dealerships stock Genuine OEM parts specifically designed for the FUSO FN-62 cargo truck. Genuine parts ensure compatibility, performance, and reliability, preserving the integrity of the vehicle and maintaining warranty coverage.

#### 01. Crater Group Authorized Service Centers

Crater Group maintains a network of authorized service centers staffed by trained technicians with expertise in FUSO vehicles. Owners can schedule service appointments at our 3S authorized dealerships to ensure quality repairs and maintenance.

#### 03. Technical Support and Assistance

Owners can rely on the technical expertise and support of Crater Group's 3S dealerships for assistance with troubleshooting, diagnostics, and repair recommendations. Our trained service personnel are equipped to address technical inquiries and provide solutions to complex issues.

# CHAPTER 7

## FINANCE OPTIONS AND COST-SAVING STRATEGIES



In this chapter, we'll explore various financing options, cost-saving strategies, and incentives available to owners to minimize expenses and maximize profitability.



**Speak to a Crater Group Team Leader for financing options. We work with leading and specialist finance institutions ensuring quick purchase turnarounds to get your truck working!**

### Overview of Finance Options

#### 02. Leasing Options

Leasing arrangements offer businesses the flexibility to use the FUSO FN-62 without the commitment of ownership. Lease payments cover the vehicle's depreciation and operating costs, providing a cost-effective solution for short-term or seasonal transportation needs.

#### 01. Hire Purchase Finance

Hire purchase finance allows businesses to acquire the FUSO FN-62 cargo truck through fixed monthly payments over a predetermined period. Ownership of the vehicle is transferred to the buyer upon completion of the finance term, providing long-term asset ownership.

#### 03. Loan Financing

Traditional loan financing provides businesses with capital to purchase the FUSO FN-62 outright, with repayment terms and interest rates determined by the lender. Loan financing offers flexibility in terms of down payment, repayment schedule, and loan duration.

# CHAPTER 7

## FINANCE OPTIONS AND COST-SAVING STRATEGIES



Flexible financing options and cost-saving strategies play a crucial role in helping businesses acquire and operate the FUSO FN-62 cargo truck efficiently.

Speak to a Crater Group Team Leader for discussing suitable options for your inquiry.

### Cost-saving Strategies for Truck Ownership and Operation cont...

#### 02. Maintenance Planning and Budgeting

Speak to a Crater Group Service Advisor to proactively plan and budget for routine maintenance and repairs to prevent unexpected expenses and minimize downtime. Regular servicing and preventive maintenance checks help identify potential issues early and extend the lifespan of your FUSO FN-62.

#### 01. Fuel Efficiency Optimization

Implement fuel-saving driving techniques, such as smooth acceleration, optimal speed maintenance, and route planning, to maximize fuel efficiency and reduce operating costs over the vehicle's lifespan.

#### 03. Driver Training and Performance Monitoring

Invest in driver training programs to promote fuel-efficient driving habits and safe vehicle operation. We monitor driver performance and provide feedback to encourage adherence to best practices and minimize fuel wastage.

# CHAPTER 7

## FINANCE OPTIONS AND COST-SAVING STRATEGIES



By leveraging flexible finance options and implementing cost-saving strategies, businesses can acquire and operate the FUSO FN-62 cargo truck in a cost-effective manner, minimizing expenses and maximizing profitability. With careful planning, strategic investment, and ongoing optimization efforts, owners can achieve long-term success and sustainability in their transportation operations.

### ... cont/ Cost-saving Strategies for Truck Ownership and Operation

#### 04. Insurance Optimization

We help customers with competitive insurance rates and coverage options tailored to the specific needs of the FUSO FN-62 cargo truck. Explore discounts, incentives and new-tech offers by insurers for fleet safety measures and driver training programs.

#### 05. Incentives and Rebates

Take advantage of incentives, rebates, and credits available for fuel-efficient vehicles, alternative fuel usage, and environmentally friendly transportation initiatives where available. Consult with financial professionals to maximize savings and compliance with regulatory requirements.

# CONCLUSION



Congratulations on taking the first step towards maximizing fuel efficiency and maintaining your FUSO FN-62 cargo truck!

Throughout this eBook, we've explored a comprehensive range of strategies and tips aimed at optimizing the performance, reliability, and cost-effectiveness of your vehicle.

From understanding the importance of fuel efficiency and implementing fuel-saving driving techniques to prioritizing regular maintenance checks and accessing service and support resources, you now have the knowledge and tools to ensure the continued success of your trucking operations.

By implementing these strategies and tips, you'll not only save on fuel costs but also enhance the overall performance, reliability, and longevity of your FUSO FN-62 cargo truck.

Whether you're a fleet operator, owner-operator, or logistics manager, investing in fuel efficiency and maintenance is essential for maximizing profitability and sustainability in your transportation operations.

For further assistance and support, don't hesitate to reach out to our expert team at

0736 212 055 and 0736 212 056

We're here to provide guidance, answer questions, and offer personalized recommendations to help you achieve your business goals.

Thank you for choosing FUSO and trusting us to support your transportation needs. Here's to many miles of efficient and reliable operation with your FUSO FN-62 cargo truck!

# APPENDIX

## GLOSSARY OF TERMS



This glossary provides definitions for key terms and terminology used throughout the eBook, ensuring clarity and understanding for readers:

- **Fuel Efficiency:** The measure of how effectively a vehicle utilizes fuel to perform work or provide propulsion. It is typically expressed as fuel consumption per unit distance traveled (e.g., miles per gallon, liters per 100 kilometers).
- **Maintenance:** The process of inspecting, servicing, and repairing vehicle components to ensure optimal performance, reliability, and safety.
- **Spare Parts:** Replacement components and assemblies used to repair or replace worn or damaged parts of a vehicle, ensuring continued functionality and performance.
- **Telematics:** The use of telecommunications and information technology to transmit data and information remotely from vehicles to a central location, enabling fleet management and monitoring of vehicle performance and driver behavior.
- **OEM (Original Equipment Manufacturer):** Refers to the manufacturer of a vehicle or its components. OEM parts are produced by the original manufacturer and are designed to meet the specifications and quality standards of the vehicle.
- **Just-in-Time Inventory:** Inventory management strategy aimed at minimizing carrying costs and optimizing inventory turnover by ensuring that parts and materials are ordered and delivered only as needed for production or maintenance.

# APPENDIX

## ADDITIONAL RESOURCES AND REFERENCES



This section provides a list of additional resources, references, and further reading materials related to fuel efficiency, maintenance, and operation of the FUSO FN-62 cargo truck.

By leveraging these additional resources and references, you can enhance your knowledge, skills, and capabilities in operating and maintaining the FUSO FN-62 cargo truck effectively and efficiently.

- **FUSO FN-62 Owner's Manual:** Refer to the official owner's manual provided by FUSO for detailed information on vehicle specifications, maintenance procedures, and troubleshooting guidelines.
- **FUSO Dealership Network:** Contact your nearest CRATER GROUP dealership for expert advice, service support, and genuine OEM parts for the FN-62 cargo truck. We have 4 locations across Kenya in Nakuru, Nairobi, Kisumu and Eldoret.
- **Transportation Industry Publications:** Explore industry publications, websites, and forums dedicated to commercial trucking and fleet management for insights, best practices, and news updates.
- **Government Agencies and Regulatory Bodies:** Consult with government agencies and regulatory bodies responsible for transportation and environmental regulations for guidance on compliance, incentives, and industry trends.
- **Fleet Management Software and Solutions:** Consider investing in fleet management software and solutions to streamline operations, monitor vehicle performance, and optimize fuel efficiency.
- **Professional Associations and Organizations:** Join professional associations and organizations for commercial trucking and transportation professionals to network, access resources, and stay informed about industry developments.

# DRIVEN BY SUCCESS: EMPOWERING YOUR BUSINESS GROWTH

Step into a world where dreams meet profits with the Fuso FN-62 and Crater Group. As the leading 3S dealer, we're dedicated to fuelling your business aspirations. Harnessing the Fuso FN-62's exceptional performance and Crater Group's unparalleled expertise, we empower you to overcome obstacles and capitalize on opportunities.

# FOUR

counties

## National Market Reach

Our commitment to excellence and expertise in service, sales, and spare parts ensures that your transportation aspirations are transformed into thriving enterprises across Kenya.

## EVERY MILE TRAVELED SIGNIFIES PROGRESS

Together, let's drive success and turn your ideas into profitable ventures.

## ENGINE OIL



Discover the excellence of our premium multi-grade engine oil, designed for durability and exceptional performance in any environment. Protect your engine from rust, corrosion, and wear in even the harshest conditions. Ensure longevity and optimal performance for your vehicle.

**Call now to purchase and safeguard your investment.**

# PROFESSIONAL TEAM

At Crater Group, we are a dedicated team of automotive professionals committed to providing exceptional customer service and expertise in every interaction.



**Terry**  
Nakuru Head Office Team Leader

Meet Terry, our Team Leader at Crater Group's Head Office in Nakuru. With 15+ years in the automotive industry, Terry's passion for exceptional customer service shines through. She goes above and beyond to build lasting relationships and ensures every customer leaves satisfied.



**Rose Muhura**  
Nairobi Team Leader

Say hello to Rose, our exceptional Team Leader at Crater Group's Nairobi location on Mombasa Road. Also with 15+ years of experience in the automotive industry, Rose's unwavering dedication to customer satisfaction sets her apart. Her approachable demeanor and genuine interest in helping others make her a valued resource for clients seeking sales, reliable service and support.



**Susan Mumbua**  
Kisumu Team Leader

Introducing Susan, our dynamic Team Leader at Crater Group's Kisumu location. With a strong background in automotive sales and service spanning over several years, Susan is dedicated to providing top-notch customer care. Her friendly demeanor and attention to detail make her a trusted advisor for customers seeking expert guidance.



**Erick Makori**  
Eldoret Team Leader

Meet Erick, our esteemed Team Leader at Crater Group's Eldoret location. With over 20 years of experience in the automotive industry, Erick is a seasoned professional known for his passion for exceeding customer expectations with a proactive approach to sales, service and support.

## Turning Ideas into Enterprise

Unlock the potential of your business with the FUSO FN-62, where innovation meets reliability. As the leading and preferred authorized 3S dealer, Crater Group is committed to transforming your transportation aspirations into thriving enterprises.

With the FN-62's unparalleled performance and Crater Group's expertise in service, sales, and spare parts, we empower you to conquer challenges and seize opportunities.

From concept to execution, together, we'll navigate the road to success, turning your ideas into profitable ventures with every mile travelled.

Disclaimer: While the information provided in "The Ultimate Guide to Maximizing Fuel Efficiency and Maintenance" is intended to enhance customer experience and optimize fuel efficiency for FUSO FN62 trucks, Crater Group does not accept responsibility for any loss, damage, or inconvenience arising from the use of this guide. It's important to note that fuel consumption is influenced by various factors, including driving habits, vehicle condition, and external conditions, and results may vary accordingly. This guide serves as a resource to help drivers make informed decisions and improve their overall experience with FUSO trucks.

## MORE ABOUT US

For any inquiries or assistance regarding the FUSO FN-62 or other products in our FUSO range, feel free to reach out to our dedicated team at Crater Group. Whether you're seeking information on purchasing options, maintenance support, or spare parts availability, we're here to provide prompt and personalized assistance. Your satisfaction and success are our top priorities, and we're committed to delivering exceptional service every step of the way. Contact us today and let's start a conversation about how we can meet your trucking needs effectively.



Website

[www.crater-group.com](http://www.crater-group.com)



Email

[nairobi@crater-group.com](mailto:nairobi@crater-group.com)



Phone

**Nairobi: 0733 636 188**

**Nakuru: 0736 212 055/6**

**Kisumu: 0724 747 370**

**Eldoret: 0731 652 246**



Office Address

**Crater Business Park  
Mombasa Road, Nairobi, Kenya**

**Nakuru: A104 Highway (outbound)  
Kisumu: Mega City  
Eldoret: Uganda Road**