

CRYPTOCYCLE PRO INDICATOR SUITE

Complete Training, Strategy & Education Guide

PART 1 — FOUNDATIONS

Welcome to the CryptoCycle Indicator Suite Training & Strategy Guide

Welcome — Your New Market Edge

Congratulations — you've unlocked the **CryptoCycle Indicator Suite**, a professional-grade system designed to help you stop guessing and start *navigating* crypto cycles with confidence.

This isn't a signal generator or a magic buy/sell tool.

It's a **market compass** — a visual map that reveals:

- Where we are in the macro cycle
- Where liquidity is flowing
- When risk is rising or falling
- How investor psychology shifts from fear → greed → fear again

Once you learn to read these color bands, you'll never see the market the same way again.

Crypto Colin Says:

"I built this suite because I was tired of watching good people buy tops and panic-sell bottoms. This toolkit shows you what smart money sees — and gives you confidence when everyone else is emotional."

Why the CryptoCycle Suite Exists

Crypto doesn't move in straight lines. It expands and contracts with liquidity, sentiment, and narrative waves.

Most traders only watch *price* — but price is the last thing to move.

Liquidity moves first → sentiment follows → price reacts last.

This suite was built to track that flow by:

- Mapping long-term capital rotation (BTC → ETH → Altcoins → Stables)
- Visualizing valuation expansion via dynamic Fibonacci-based bands
- Translating crowd emotion into clear structural zones

The result:


A system that tells you **what phase of the cycle you're in — and how to act accordingly.**

The Big Picture — The CryptoCycle Framework

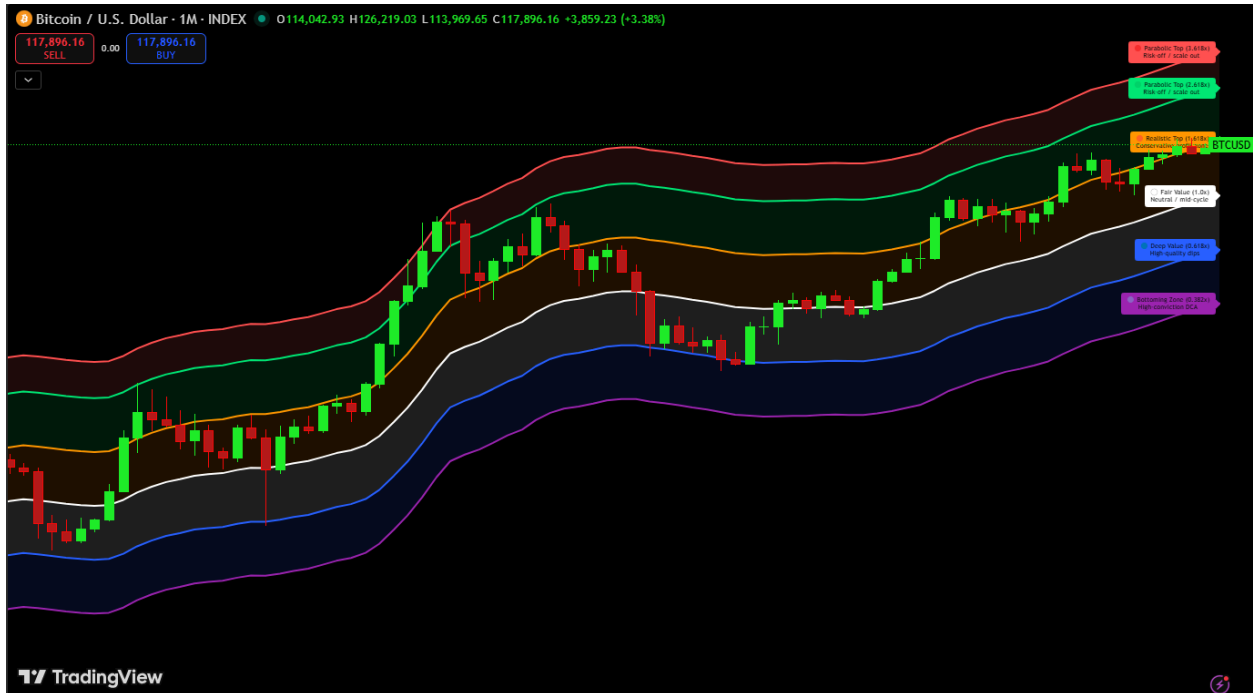
Every asset in crypto follows the same emotional rhythm:

Fear → Accumulation → Expansion → Euphoria → Distribution → Capitulation

The CryptoCycle suite captures these phases visually through color-coded bands:

Color	Phase	Emotion	Typical Action
 Red	Mania Top	Greed	Exit majority
 Green	Parabolic Top	Euphoria	Trim heavily
 Orange	Realistic Top	Excitement	Start profit ladder
 White	Fair Value	Neutral	Hold core
 Blue	Deep Value	Fear	DCA gradually
 Purple	Bottoming	Capitulation	Accumulate heavily

These colors stay consistent across all indicators — BTC or alts, monthly or daily.



🗨️ Crypto Colin Says:

“When the chart is purple or blue, everyone else feels fear — that’s when I lean in. When it turns orange or green, the crowd feels unstoppable — that’s when I quietly take profits.”

🧠 What Makes This Suite Different

There are thousands of TradingView indicators — but almost all of them react to price.

This suite focuses on **context**, not prediction.

1 Built on Liquidity, Not Lagging Signals

The bands expand/contract based on market rhythm — not static moving averages.

2 Works Across All Assets

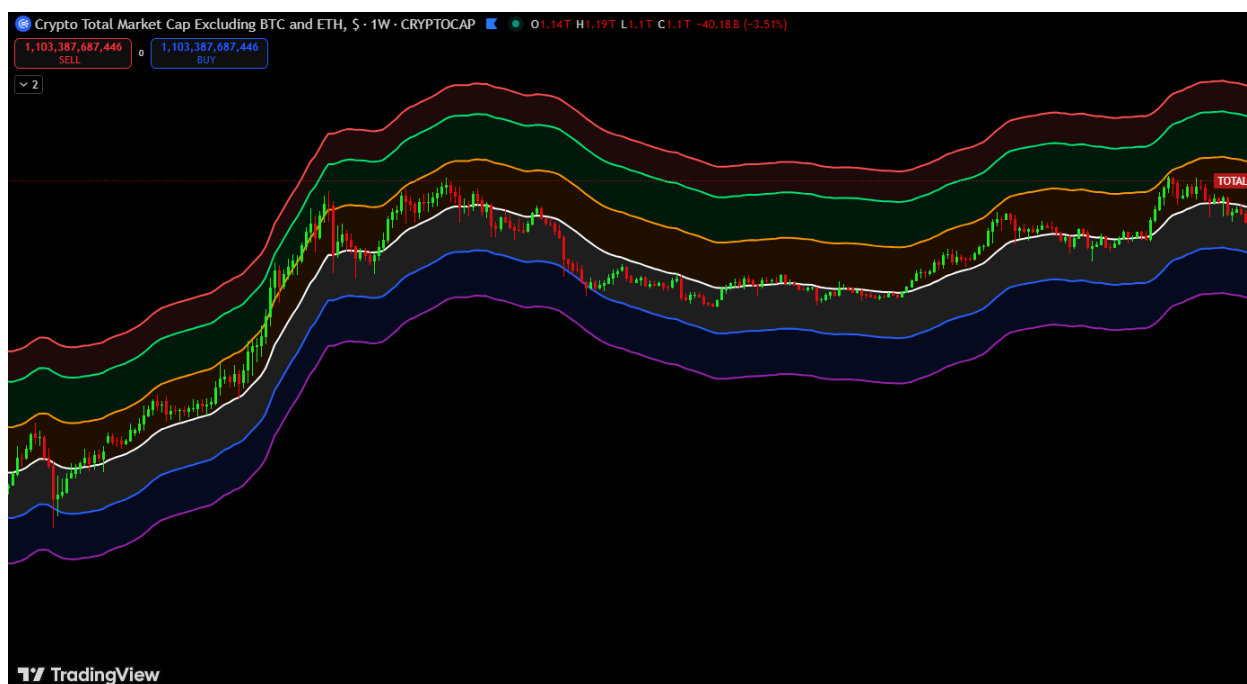
BTC, ETH, TOTAL3, or your favorite alt — investor psychology behaves the same.

3 Multi-Timeframe Intelligence

- Monthly → macro cycle
- Weekly → momentum rhythm
- Daily → entry/exit timing

4 Teaches You to See Emotion Objectively




The colors pull you out of fear/greed and anchor you to repeatable behavior.



Crypto Colin Says:

“When you combine BTC Macro with ALT Macro, it’s like turning on X-ray vision. You can literally see liquidity rotating across the entire market.”

The Four Core Indicators (Your Market Dashboard)

Indicator	Timeframe	Focus	Best For
 BTC • MACRO	1M	Long-term valuation	Bitcoin / Total Market
 BTC • DCA	1W	Weekly momentum	BTC / Large Caps
 ALT • MACRO	1W	Rotation & altseason phases	TOTAL3 / Alt Ecosystem
 ALT • DCA	1D	Daily entries/exits	Individual Altcoins

Each layer answers a different question:

- **BTC Macro** → Where are we in the 4-year cycle?
- **BTC DCA** → Should I be adding or trimming?
- **ALT Macro** → Is altseason forming or ending?
- **ALT DCA** → Should I enter or take profits today?

The Goal — Conviction Over Confusion

When retail panics, your charts turn blue.

When retail gets euphoric, your charts turn orange/green/red.

This gives you:

- Structure
- Timing
- Emotional clarity
- Confidence in every phase

🗨️ Crypto Colin Says:

“This system isn’t about predicting the future — it’s about acting with conviction no matter what the market throws at you.”

📍 Before You Begin — Required Chart Setup

To get accurate results, configure your TradingView environment correctly:

1 Turn ON Log Scale

- Crypto expands in *multiples*, not straight lines
- The valuation bands only align properly on a **logarithmic chart**



2 Use the Correct Timeframes

Indicator	Timeframe
BTC • MACRO	1 Month
BTC • DCA	1 Week
ALT • MACRO	1 Week
ALT • DCA	1 Day

3 Use a Clean Dark Chart Layout

Helps color bands stand out clearly.

4 Save Templates for Quick Switching

Save as:

- *CryptoCycle – BTC Macro*
- *CryptoCycle – BTC DCA*
- *CryptoCycle – ALT Macro*
- *CryptoCycle – ALT DCA*

Crypto Colin Says:

“Turning on log scale isn’t optional — it transforms the noise into a true cycle map.”

PART 2 — BTC • MACRO

The Indicator That Defines the Entire Crypto Cycle

1 Why This Indicator Exists (The Purpose)

Bitcoin is the heartbeat of the crypto market.

Every rotation, every altseason, every crash, every parabolic blow-off — it all begins with Bitcoin's macro cycle. If you know where BTC is in the 4-year rhythm, you automatically know where ETH, TOTAL3, and your altcoins *will* be months later.

The BTC • MACRO indicator turns this cycle into a **clear, color-coded map**, showing when Bitcoin is:

- **Undervalued** (smart money accumulation)
- **Fairly valued** (healthy mid-cycle)
- **Overextended** (euphoria and late-stage risk)
- **Peaking** (distribution + cycle top)

This transforms guesswork into structure — and emotions into strategy.

Crypto Colin Says:

“If you only mastered this one indicator, you'd already be ahead of 95% of crypto investors. When you know where Bitcoin is in its cycle, everything else becomes obvious.”

2 How to Read the Colors & What They Mean

Each band represents Bitcoin's valuation relative to long-term trend expansion. These are not "price targets" — they are **emotional and liquidity states**.

Color	Phase	Market Emotion	Strategy
 Purple	Capitulation / Bottom	Despair	High-conviction DCA
 Blue	Deep Value	Fear	Continue accumulating
 White	Fair Value	Neutral	Hold core positions
 Orange	Realistic Top	Excitement	Begin profit ladder
 Green	Parabolic Top	Euphoria	Trim heavily
 Red	Mania / Blow-Off	Greed & Delusion	Exit majority

Key Principle:

When price climbs from **white** → **orange** → **green** → **red**, liquidity expands faster than fundamentals.

When it falls back toward **blue/purple**, liquidity is contracting — that's where wealth cycles restart.



3 Bottom & Top Behavior (What the Indicator Reveals)

Cycle Bottoms — Why Blue/Purple Matter

When BTC hits blue/purple:

- Sentiment is fear-driven
- Smart money accumulates
- Social sentiment is negative
- Long-term value is highest

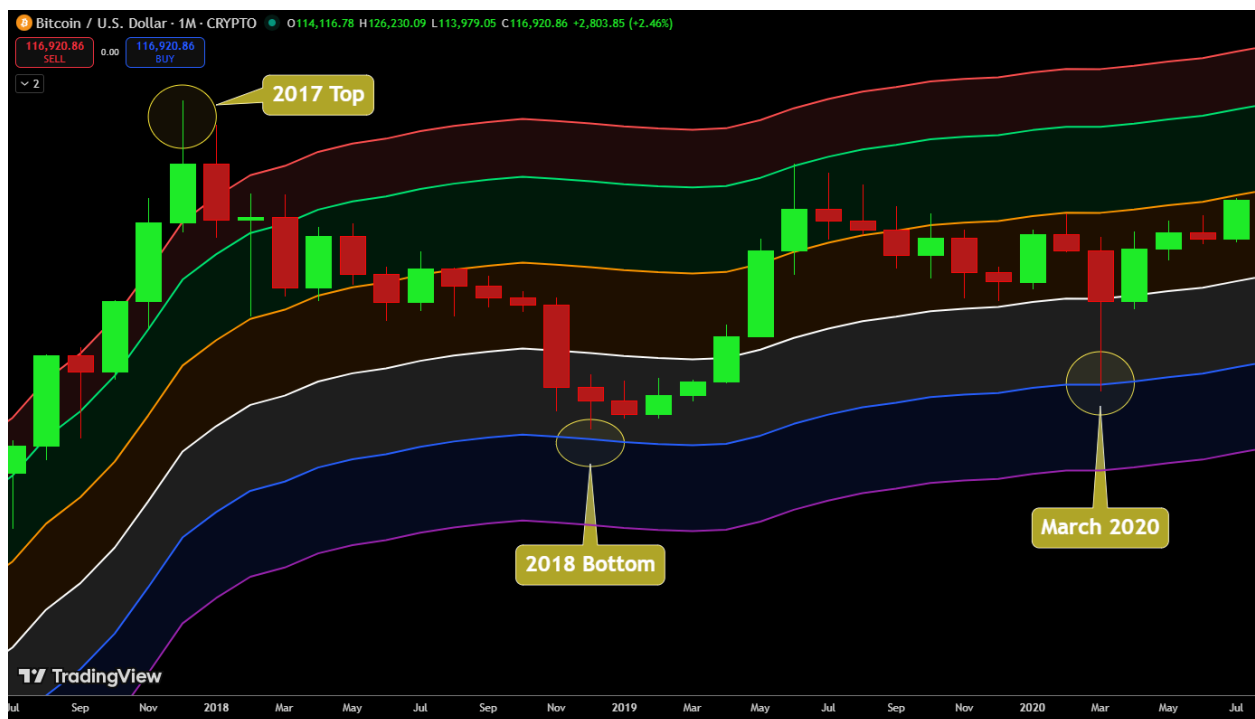
This is the “wealth zone,” not the danger zone.

Cycle Tops — Why Orange/Green/Red Matter

When BTC reaches orange → green → red:

- Liquidity becomes aggressive
- Retail FOMO enters
- News becomes euphoric
- Risk/reward flips negative

The colors show euphoria long before the crash appears.



This screenshot shows Bitcoin's macro swing from the 2017 top (orange/green), into the 2018 collapse, and finally the 2020 deep-value retest. Both 2018 and 2020 hit the same blue band — confirming it as the *true generational floor* of that cycle.

💡 Cycle Insight:

The 2018 low sparked accumulation, but 2020 confirmed it.
Blue = a *range of opportunity*, not a single candle.

4] How to Use BTC • MACRO (Practical Guide)




1] Set to 1M (One Month) Timeframe

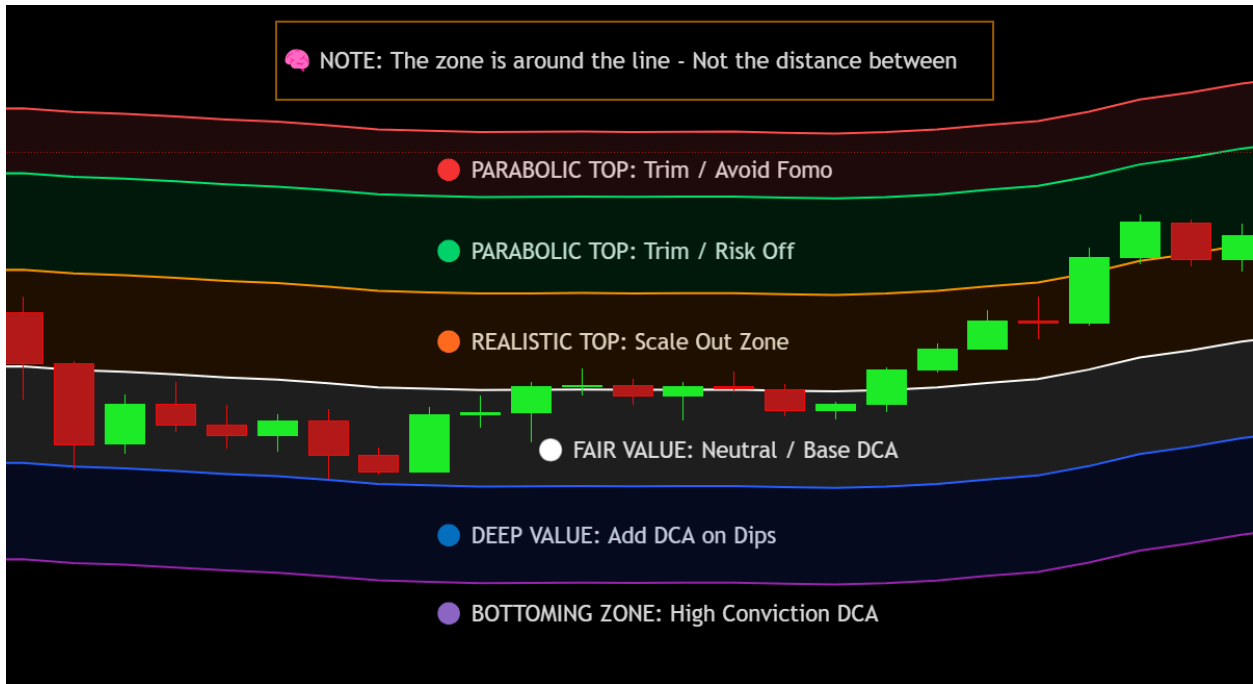
This smooths noise and reveals the true macro rhythm.

2] Identify the Current Color Zone

Ask one question:

“Which band is price touching right now?”

-  = early cycle → DCA
-  = mid-cycle → hold
-  = late-cycle → sell/rotate



3 Match Your Behavior to the Zone

Zone	What Smart Money Does	What Retail Does	Your Move
●/●	BUYS	Panics	Build position
●	Holds	Gets bored	Stay patient
●	Trims	FOMOs in	Start selling
●/●	Exits	Buys tops	De-risk heavily

5 Macro Confluence Signals (Optional Add-Ons)

BTC • MACRO is the anchor.

These tools provide confirmation — not prediction:

Companion Tool	What to Watch	Meaning
BTC Dominance (BTC.D)	Rising while BTC in blue	Early bull conditions
Global Liquidity (M2)	Expanding	Mid-cycle growth
Fear & Greed Index	80+ while orange/red	Peak topping risk
ETH/BTC ratio	Rising	Altseason forming

Crypto Colin Says:

“When BTC Macro turns orange and Fear & Greed hits 80+, I start selling. I don’t argue with confluence.”

📁 6 Cycle Walkthrough Example (2019–2021)

2019:

Blue/purple → Heavy DCA

2020:

White → New bull confirmed

Late 2020–Early 2021:

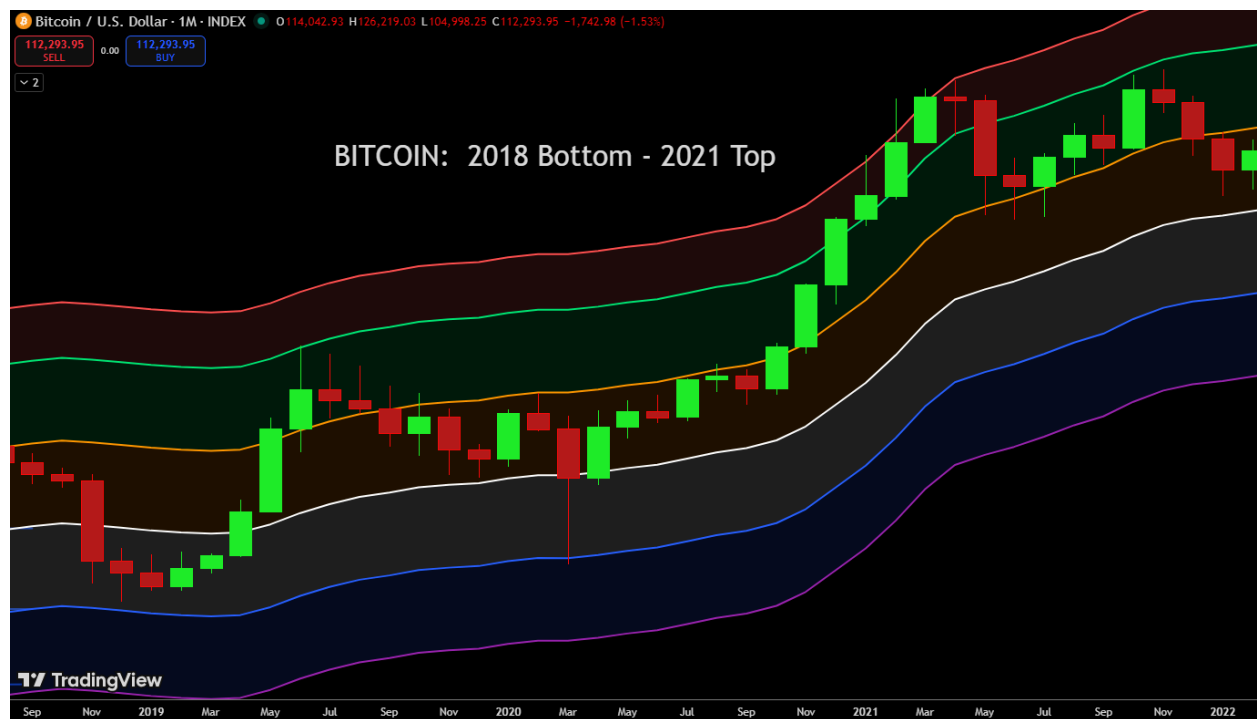
Orange/green → Begin profit ladder

Q4 2021:

Red band → Cycle peak → Exit

2022:

Back to blue → Reset + new cycle load-up



7 How BTC • MACRO Fits Into the Full Suite

- BTC • MACRO = Cycle Context
- BTC • DCA = Momentum Timing
- ALT • MACRO = Liquidity Rotation
- ALT • DCA = Daily Precision

BTC Macro is always **the first chart you check**.

If BTC is macro overextended:

→ Altcoins are a trap

If BTC is macro bottoming:

→ Altcoins become asymmetric opportunities

8 Quick Checklist — BTC Macro Flow

Before every big decision, ask:

1. What color is BTC touching?

- Blue/purple = build
- White = hold
- Orange/green/red = sell

2. Is BTC above or below long-term fair value (white band)?

3. Do sentiment tools match the color?

(Fear low = DCA. Greed extreme = sell.)

4. What is your plan?

(Use your Playbook checklist.) This one indicator alone will prevent 90% of bad decisions.

PART 3 — BTC • DCA

The Weekly Momentum Map for Timing Your DCA & Profit Ladder

1 Purpose — Why This Indicator Exists

If **BTC • MACRO** is the mountain map...

BTC • DCA is the *trail you're walking today*.

Markets breathe in shorter waves even inside a long-term trend. This weekly indicator captures those momentum pulses so you know:

- When to DCA
- When to pause
- When short-term tops are forming
- When momentum is cooling or strengthening
- When to begin your profit ladder

It keeps your actions **aligned with the macro**, but timed with the *weekly heartbeat*.

Crypto Colin Says:

“The Macro tells me *where* we are.




The DCA tells me *when* to take the next step.

This pairing stops me from chasing green candles or panic-buying tops.”



2 The Three Zones (Simple, Clear, Actionable)

The weekly DCA indicator compresses everything into **three emotional zones** — perfect for weekly rhythm and decision-making.

Color	Market Condition	Emotional Tone	What You Do
 Blue	Undervalued / Pullback	Fear	Add DCA positions confidently
 White	Fair Value / Equilibrium	Neutral	Hold core, wait
 Orange	Overheated Momentum	Excitement	Trim profits / stop adding

The simplicity is intentional — one glance tells you exactly how aggressive or defensive to be.



💡 3 Multi-Timeframe Power — Macro + DCA Together

This is where your edge sharpens.

When **BTC • MACRO** (1M) and **BTC • DCA** (1W) align, you get the highest-confidence signals in the entire system:

Macro Status	DCA Zone	Combined Message	Strategy
🟡🟢 Macro Blue	🟢 DCA Blue	Deep accumulation	DCA aggressively
⚪ Macro White	⚪ or 🟡	Mid-cycle expansion	Hold / mild trimming
🟡🟢 Macro Orange/Green	🟡	Late-cycle euphoria	Start de-risking
🔴 Macro Red	🟡 (with weakness)	Cycle peak / distribution	Protect capital

💬 Crypto Colin Says:

“When both charts are orange together?
That’s my alarm bell — not to panic, but to *harvest*.”

4 Weekly Execution Routine (Step-by-Step)

Every **Sunday or Monday**, run this checklist:

1 Look at BTC on the 1-Week timeframe

Identify: Blue? White? Orange?

2 If Blue → DCA

- Add to BTC or ETH
- Use layered buys
- Confirm with RSI < 40 if available

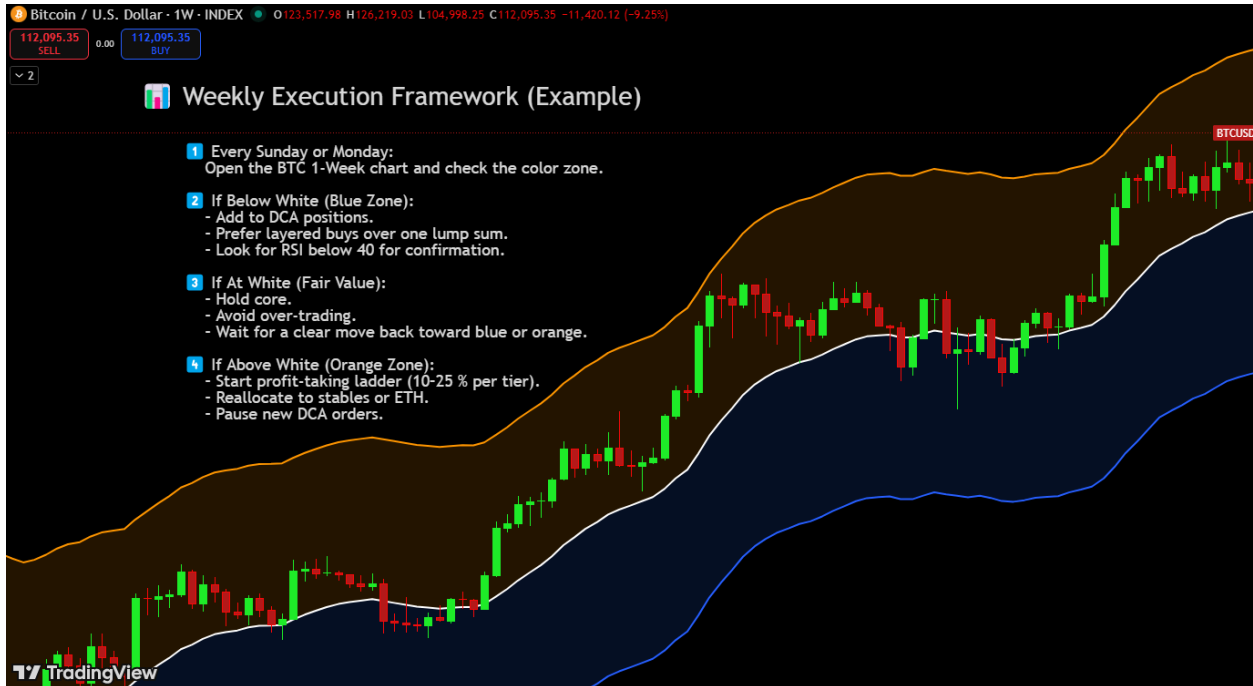
3 If White → Pause

- Hold your core positions
- Let the trend show direction
- Avoid emotional trades

4 If Orange → De-Risk

- Begin profit-taking ladder (10–25%)
- Pause all DCA entries
- Add to stables or rotate some to BTC

This creates a **disciplined weekly routine** that removes emotion from timing.



🧠 5 Reading Momentum Shifts (How to Interpret Movement)

The **white line** is the heartbeat of trend momentum.

Here's how to read it:

- **Price above white and holding** → Trend strong
- **Price dips below white but quickly bounces** → Healthy pullback
- **Price breaks below blue with volume** → Weekly trend reset

💬 Crypto Colin Says:

“When we dip under white during a bull run, I call that the *gift zone*. Everyone else panics — I add quietly.”

6 Profit Ladder (Simplified for Weekly Momentum)

Use color transitions as your selling thermostat:

Zone	Action	Allocation Example
● → ●	Trim early	10% of position
● holding	Reduce risk	15–25%
● / ● (from Macro)	Major exit	Keep moonbag only

You're not trying to predict tops — just selling into strength while others build greed.



7 Optional Confirmation Tools (If You Want More Precision)

These are optional — the indicator works on its own.
Use them only for additional confidence:

Tool	Purpose	Ideal Signal
RSI (14)	Momentum strength	<40 = buy zone, >70 = profit-take
Volume / OBV	Accumulation	Rising in blue = smart money buying
Funding Rates	Over-leverage	High funding + orange = trim now
200 EMA	Trend health	Above 200 EMA + white line = strength

Crypto Colin Says:

“I don’t need 20 indicators. This one plus RSI and volume gives me 95% of what I need.”

8 Example — 2023 Mini-Cycle Walkthrough

2023 early: Blue → DCA heavily

Mid-2023: White → Hold

Late-2023 / Q1 2024: Orange → Profit ladder

Pullback: White → Reload opportunity



9 Integration — How BTC DCA Fits the Whole Suite

- BTC • MACRO = Cycle Context
- BTC • DCA = Weekly Execution

Together they form your **core system** before you ever touch alts.

Crypto Colin Says:

“The DCA chart is your weekly journal. Each color is a new chapter.”

10 Quick-Reference Checklist (Print This)

Question	If Yes	If No
Is BTC below white?	Start or add DCA	Wait
Is BTC above orange?	Begin profit ladder	Hold
Is RSI < 40?	Confirm entry	Stay patient
Are both Macro & DCA orange?	De-risk heavily	Maintain core

This keeps emotions out of your weekly decision-making.

● PART 4 — ALT • MACRO

The Weekly Liquidity Map That Shows When Altseason Begins and Ends

🌐 1) Why This Indicator Exists (The Purpose)

If Bitcoin is the **compass** of the market...

Altcoins are the **weather system** swirling around it.

The ALT • MACRO indicator shows you *where liquidity is flowing across the entire altcoin ecosystem*.

This is your altseason radar — it reveals:

- When altcoins are undervalued
- When liquidity is rotating out of BTC into ETH + alts
- When speculation is heating up
- When euphoria is peaking
- When liquidity is draining back to BTC or stables

By tracking TOTAL3 (altcoin market cap excluding BTC & ETH), you see the *real* story of altcoin cycles.

💬 Crypto Colin Says:

“Most traders think altseason starts when alts pump. Wrong. It starts when **liquidity begins rotating** — and this indicator shows it happening weeks before price reacts.”



2 What the ALT • MACRO Actually Measures

It tracks how far TOTAL3 (or other alt indexes) has stretched from its long-term liquidity trend — visualized as colored bands.

The colors represent **altcoin-wide emotion + liquidity phases**:

Color	Phase	Liquidity Behavior	Strategic Action
● Bottoming	Capitulation	Post-crash reaccumulation	Begin scaling in
● Deep Value	Early Recovery	Liquidity returning	Gradual DCA
● Fair Value	Mid-Cycle	Rotation steady	Hold core alts
● Realistic Top	Late Cycle	Speculation rising	Start profit ladder
● Parabolic Top	Euphoria	Retail mania	Trim heavily
● Mania Top	Blow-Off	Liquidity exit	Exit majority → rotate

These phases show the entire **altcoin liquidity wave** — not individual coin noise.



3 The Key Concept — Liquidity Rotation

Crypto liquidity follows a predictable chain:

Stables → Bitcoin → ETH → Large Caps → Mid Caps → Meme Coins → Stables

The ALT • MACRO visually shows where in that chain we currently are.

Example:

- BTC pumped (macro orange)
- ETH/BTC rising
- TOTAL3 entering blue/white

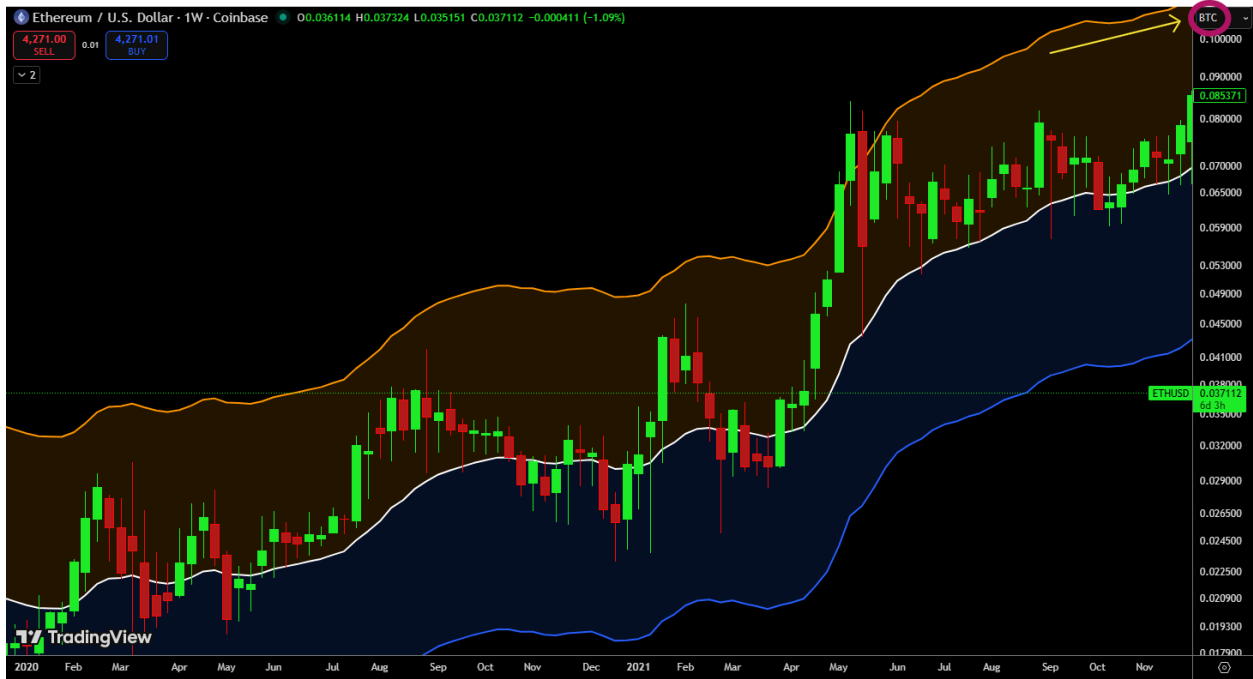
= **Early altseason forming.**

4 Best Charts to Use

Chart	What It Shows	Why It Matters
TOTAL3	Alt market cap excluding BTC & ETH	Cleanest “altseason index”
OTHERS	Alt market cap excluding BTC, ETH, stables	Pure speculative flow
ETH/BTC	ETH performance vs BTC	Early rotation signal

🗨️ Crypto Colin Says:

“TOTAL3 tells me when the storm is forming.
OTHERS tells me when the lightning is striking.”



ETH/BTC rising confirms liquidity is leaving BTC and entering ETH + alts.
TOTAL3 entering blue → white confirms early accumulation → expansion.

🔍 5 How to Interpret the Weekly Phases

When TOTAL3 is Blue/Purple

- Alts forgotten, ignored, undervalued
- Smart money accumulates
- Social sentiment low
- Best time to DCA ETH, LINK, AVAX, CRO, AIOZ, etc.

When TOTAL3 is White

- Rotation increasing
- New narratives appear (DeFi, AI, L2s)
- Hold strong positions
- Avoid chasing new pumps

When TOTAL3 is Orange/Green

- Retail FOMO entering
- TikTok/YouTube hype surging
- Perfect time to scale out
- Do NOT enter new plays here

When TOTAL3 is Red

- Liquidity exit phase
- Market overstretched
- Altseason peak either here or slightly before
- Rotate to BTC or stables immediately

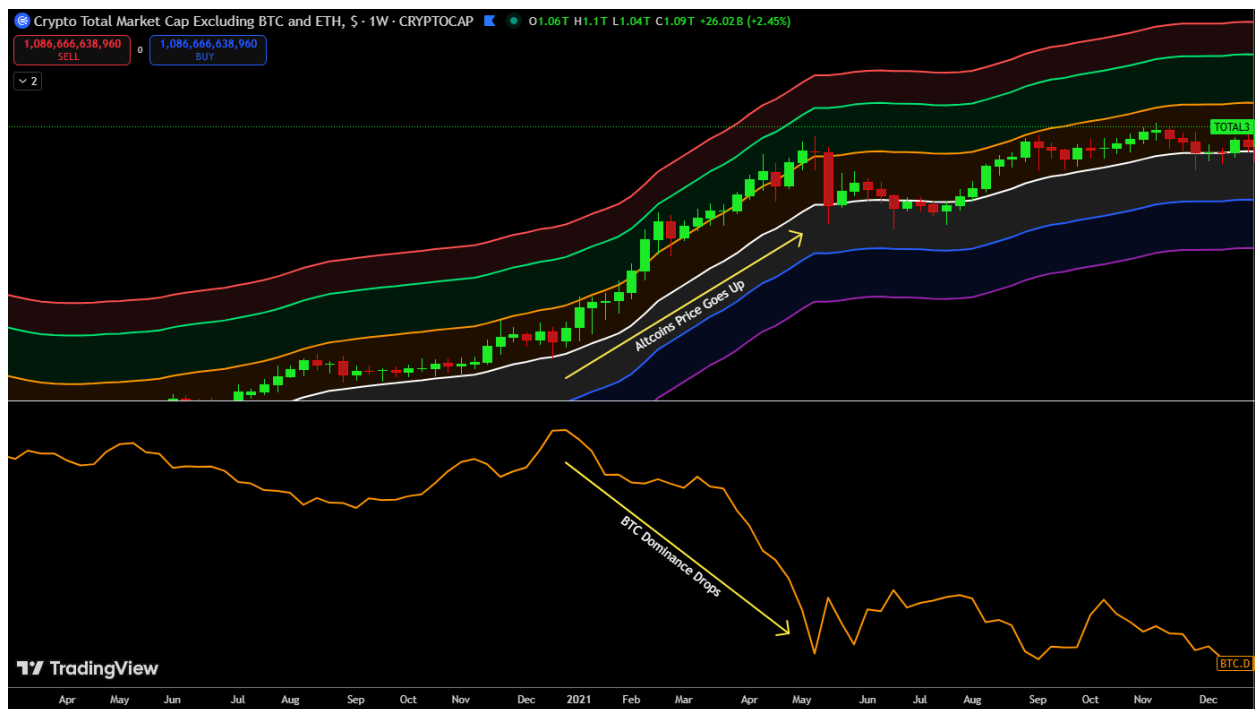
6 Altseason Timing Framework

These are the strongest signals that a real altseason is forming:

Signal	Meaning	Strategic Move
BTC Dominance ↓ while BTC Macro = orange	Capital leaving BTC	Start rotating to ETH/alts
ETH/BTC rising + ALT Macro blue/white	Early altseason	Increase alt exposure
ALT Macro = orange + Fear & Greed > 80	Peak rotation	Trim aggressively
ALT Macro = red + BTC.D rising	End of altseason	Exit alts → stables

🗨️ Crypto Colin Says:

“When BTC Dominance drops and OTHERS spikes into orange... that’s when retail thinks they’re getting rich. That’s when I sell into the hype.”









When BTC Dominance falls, altcoins move into expansion phases. When BTC Dominance stops falling or reverses upward, the rotation ends.

7 Pairing ALT • MACRO with Other Indicators

Companion	Role	What to Watch
BTC • MACRO	Cycle context	Orange → alts warming
BTC • DCA	Momentum confirmation	BTC still strong = safe rotation
ALT • DCA	Daily precision	Refines alt entries
Fear & Greed Index	Sentiment	> 80 = late cycle

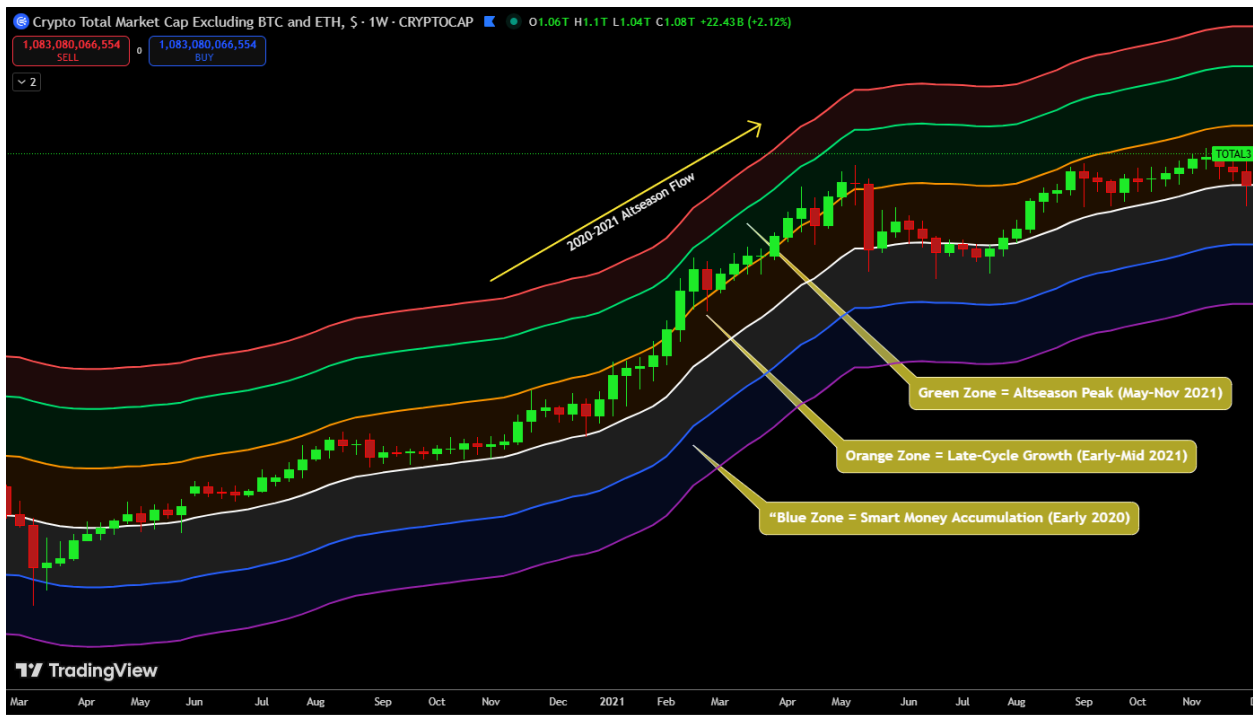
8 Portfolio Application Guide

ALT Macro Zone	Portfolio Bias	Example Allocation
 / 	Accumulate	40–60% alts
	Balanced	30–50% alts
	Reduce risk	20–30% alts
 / 	Exit	<10% alts

This is your **rotation thermostat**.

9 Case Study — 2021 Altseason Breakdown

- 1 BTC Macro turned **orange** → ETH/BTC began rising
- 2 TOTAL3 moved **blue** → **white** → **orange**
- 3 OTHERS spiked into **green** → mid-cap/meme mania
- 4 TOTAL3 hit green and stalled → altseason peak
- 5 Liquidity drained → 60% crash
- 6 Blue zone in 2022 → next DCA window



TOTAL3 went from accumulation to euphoria — never touching the red band before collapsing. This visually confirms the rotation pattern across the entire alt market.

🗨️ Crypto Colin Says:

“Every altseason feels new, but the rhythm never changes. When you learn the colors, you’ll never be caught off guard again.”

Quick-Reference Checklist (Print This)

Question	If Yes →	If No →
Is TOTAL3 in blue/purple?	Begin DCA	Focus on BTC
Is ETH/BTC rising?	Rotation forming	Stay patient
Is ALT Macro orange + F&G > 80?	Take profits	Monitor
ALT Macro red + BTC.D rising?	Exit alts	Wait for reset

This is your **altseason compass**.

● PART 5 — ALT • DCA

The Daily Momentum Indicator That Times DCA, Entries, Profits & Cycle Reloads

⚙️ 1 Why This Indicator Exists

The ALT • MACRO (weekly) shows the **big liquidity waves** across the entire altcoin ecosystem.

The ALT • DCA (daily) zooms in and shows you the **short-term rhythm inside that wave** — specifically:

- When individual alts are discounted
- When momentum is recovering
- When a spike is overheated
- When to trim profits
- When a pullback is a reload opportunity

This is your **precision timing tool** for daily altcoin management.

💬 Crypto Colin Says:

“When the daily turns blue and the weekly is still in accumulation... that’s my favorite setup in the entire suite. Quiet entries. No hype. Just smart accumulation.”



2 The Three Momentum Zones (Simple & Actionable)

The daily DCA indicator mirrors the simplicity of BTC DCA — but tuned for the much higher volatility of altcoins.

Color	Condition	Emotion	Best Action
● Blue Zone	Deep Value / Oversold	Fear & pessimism	Start/continue DCA
● White Band	Fair Value	Neutral	Hold positions
● Orange Zone	Overheated	Complacency & FOMO	Trim profits / stop buying

This gives you **instant clarity**:

- Blue = entries
- White = hold
- Orange = exits/profits

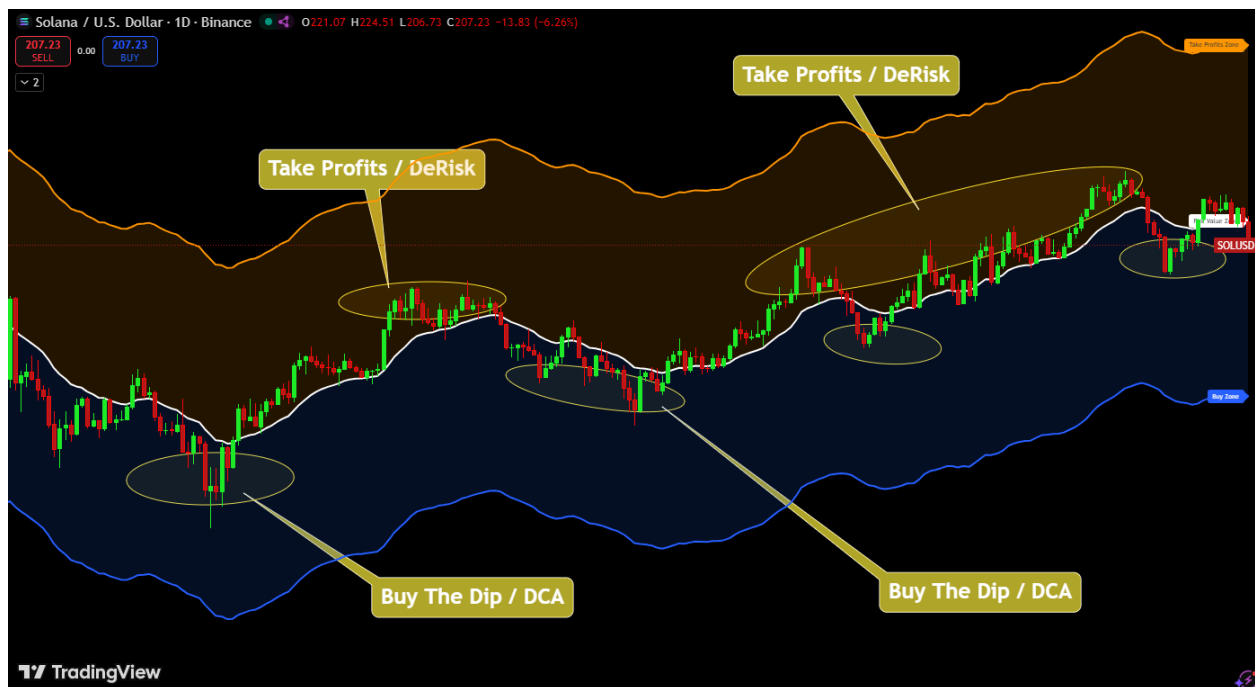
💡 3 What ALT • DCA Measures

The indicator tracks how far daily price has expanded away from its fair-value trend.

This shows you the emotional state of the crowd in real time:

- **Below white** → undervalued, fear, opportunity
- **At white** → normal, calm, balanced
- **Above orange** → overheated, speculative, short-term risk

This makes you see what others *feel*, and act accordingly.



💬 Crypto Colin Says:

“When the crowd screams ‘alts are dead,’ the daily is usually blue. That’s your signal — not their emotions.”

🧠 4 How to Combine ALT • MACRO + ALT • DCA

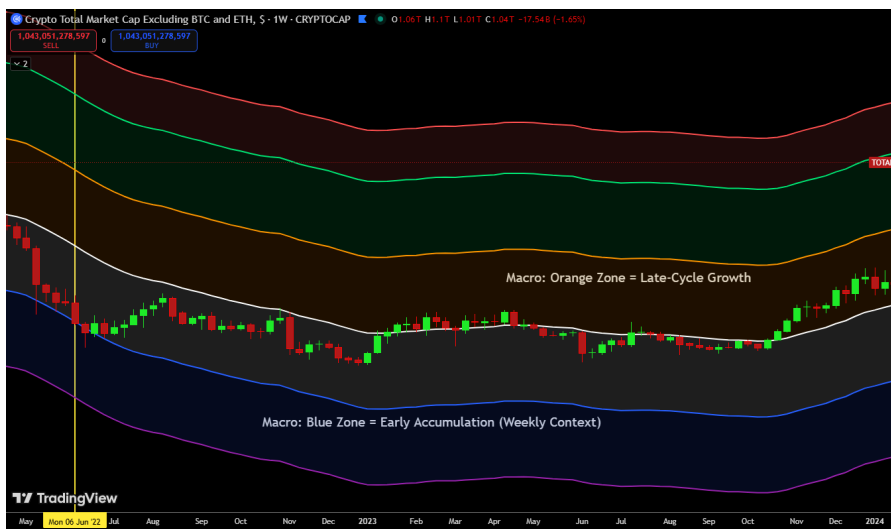
This is where altcoin timing becomes **unbeatable**.

Weekly ALT • MACRO	Daily ALT • DCA	Combined Message	Best Move
Blue / White	Blue	High-probability DCA	Add aggressively
White	White	Mid-cycle equilibrium	Hold core
Orange / Red	Orange	Late-cycle euphoria	Take profits
Blue (after crash)	Blue	Cycle reset	Rebuild positions

This is your cycle rhythm for altcoins:

- Blue + Blue = Accumulate
- White + White = Hold
- Orange + Orange = De-Risk

Perfect for avoiding FOMO and catching opportunities **before retail wakes up**.



Weekly (macro) in blue = accumulation.

Daily dips into blue = timing to enter.

Both orange = timing to exit.

This multi-timeframe confluence removes emotion and turns timing into rhythm.

5 Daily Execution Routine (Your Precision Plan)

Check your favorite alts once per day:

1 Step 1 — Look at Weekly ALT • MACRO




Are alts in accumulation, balanced, or overheated?

2 Step 2 — Open the Daily ALT • DCA Chart

Check whether price is:

- Below white (blue zone)
- At white
- Above orange

3 Step 3 — Match Action to Zone

Zone	Action
 Below White	Begin/continue DCA
 At White	Hold / be patient
 Above Orange	Trim profits / pause buys

Crypto Colin Says:

“When daily hits orange while weekly is orange too, I don’t get greedy — I get *grateful*. That’s harvest season.”

📈 6 Profit-Taking & Reload Framework (Daily Version)

Use these labels directly on your charts:

Marker	Label	Meaning
●	“DCA Zone – Accumulate”	Discounted opportunity
●	“Hold / Fair Value”	Stay patient
●	“Trim Profits”	Overheated
● (optional)	“Late Euphoria – Secure Gains”	Extreme extension
●	“Cycle Reset – Reload”	Buy back after dip

Simple and effective.



This visual shows how the daily zones guide systematic selling — trimming at orange, securing gains at green, and reloading when the chart resets to blue.

7 Optional Confirmation Tools (Use Only if Needed)

Tool	Purpose	Ideal Signal
RSI (14)	Check for momentum exhaustion	<40 = buy, >70 = sell
Volume / OBV	Identify accumulation	Rising volume in blue = strong
Funding Rates / OI	Spot leverage risk	High funding + orange = exit
BTC Macro/DCA	Market context	BTC orange + ALT orange = sell

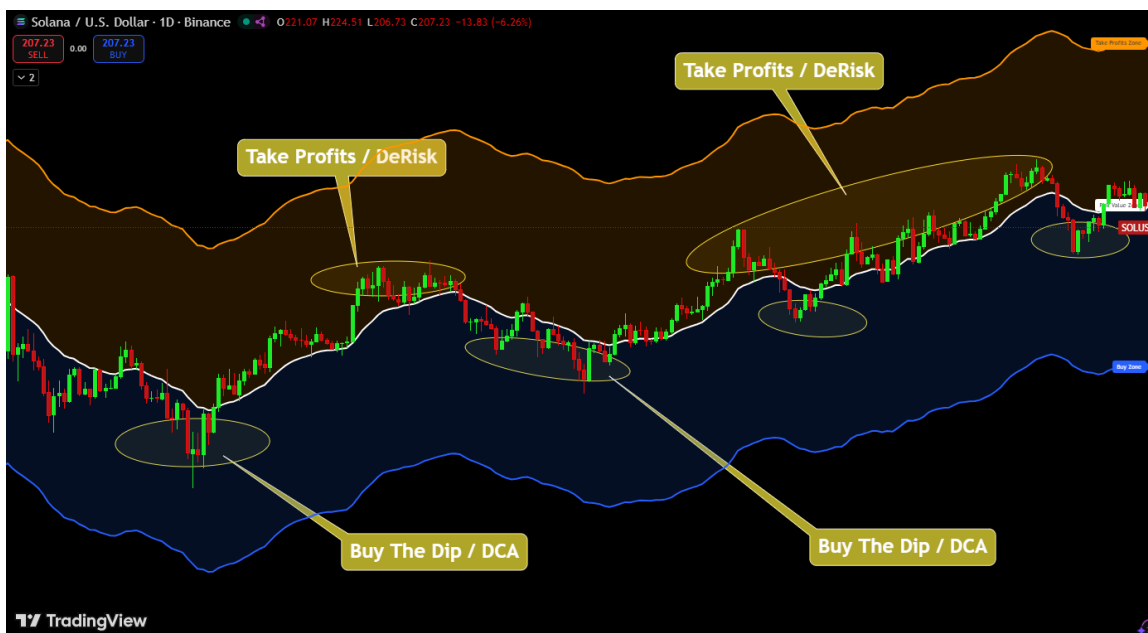
These tools support your decisions but are *not* required.

Crypto Colin Says:

“A blue zone with low RSI and rising volume is my sweet spot. That’s where conviction meets opportunity.”

8 Case Study — Daily Cycle (Simple & Clear)

- 1 SOL bottomed in blue → DCA
- 2 Rallied to white → hold
- 3 Spiked into orange → trim profits
- 4 Corrected to blue again → reload



9] How ALT • DCA Fits Into Your Portfolio Strategy

Portfolio Goal	Indicator Cue	Action
Build positions	Blue zone	DCA
Hold conviction	White zone	Stay patient
Lock in profits	Orange zone	Trim 20–50%
Protect capital	Orange + BTC Macro orange	Exit to BTC/stables

This turns chaotic altcoin volatility into a predictable rhythm.

10] Quick-Reference Checklist (Print This)

Question	If Yes →	If No →
Below white?	Start/continue DCA	Wait
RSI < 40 + volume rising?	Confirm entry	Stay patient
Above orange?	Take profits	Hold
Both ALT MACRO + ALT DCA orange/red?	Exit alts	Monitor
Return to blue after pullback?	Restart DCA plan	Wait

Crypto Colin Says:

“You don’t need to catch every wave. Just buy the blue, sell the orange, and let the market do the rest.”

❖ PART 6 — COMBINING ALL INDICATORS INTO YOUR CYCLE STRATEGY

“From Signals to System — Turning Charts Into a Complete Cycle Framework”

Part 6 ties everything together. This is where the CryptoCycle suite stops being “four indicators”... and becomes a **full-market operating system**.

When you view BTC Macro, BTC DCA, ALT Macro, and ALT DCA together, they reveal:

- The global crypto cycle
- The weekly trend health
- Where liquidity is rotating
- When to act at the daily level

Once you stack these layers, you no longer guess — you **navigate**.

1 The Goal — Complete Cycle Clarity (Macro → Micro)

Each indicator is a *lens*, but together they form a complete picture:

- **BTC • MACRO** → Where are we in the 4-year cycle?
- **BTC • DCA** → What is the weekly momentum telling us?
- **ALT • MACRO** → Where is liquidity rotating next?
- **ALT • DCA** → When should we enter or exit specific altcoins?

This alignment becomes your *conviction engine*.

Your decisions stop feeling emotional — they become structured, strategic, and backed by confluence.

Crypto Colin Says:

“Think of the suite like a full-body MRI of the crypto market:

BTC Macro = Skeleton

BTC DCA = Heartbeat

ALT Macro = Blood Flow

ALT DCA = Pulse Check

Put them together and you see the entire organism.”

2 The Four-Layer Dashboard (Your Market Control Center)

Layer	Indicator	Timeframe	Role
1	BTC • MACRO	1M	Defines global cycle direction (risk-on/off)
2	BTC • DCA	1W	Confirms trend health & weekly momentum
3	ALT • MACRO	1W	Tracks liquidity rotation across altcoins
4	ALT • DCA	1D	Daily entries/exits for individual alts

Each layer builds on the last. Together they create a **complete market navigation system**.

3 Liquidity Flow — The Core of CryptoCycles

Crypto liquidity moves in a predictable chain:

Fiat/Stables → BTC → ETH → Large Caps → Mid Caps → Memes → Stables

And the indicators reveal this order clearly:

Phase	BTC MACRO	ALT MACRO	ETH/BTC	Market Behavior
Early Bull	Blue/White	Purple/Blue	Flat	Smart-money accumulation
Mid Bull	White/Orange	Blue/White	Rising	Altseason warming
Late Bull	Orange/Green	Orange/Red	Peaking	Euphoria & retail mania
Reset	White→Blue	Blue/Purple	Falling	Capitulation & rebuilding

Crypto Colin Says:

“Liquidity never disappears — it rotates.
If you can see where it’s going next, you’re always early.”

4 Cycle Strategy Framework (Your Action Map)

This table tells you EXACTLY what to do at every point of the cycle:

Cycle Phase	Indicator Signals	Emotion in Market	What You Should Do
Capitulation	BTC Macro blue/purple + ALT Macro blue + DCA blue	Despair	DCA heavily into conviction assets
Early Recovery	BTC Macro white + ALT Macro blue/white + DCA blue	Doubt	Hold core, add calmly
Mid Expansion	BTC Macro orange + ALT Macro white/orange	Optimism	Manage exposure, prepare ladder
Euphoria	BTC Macro green/red + ALT Macro orange/red + DCA orange	Greed	Sell into strength, rotate
Reset	BTC Macro white→blue + ALT Macro blue	Confusion	Rebuild long-term positions

5 The “Macro → Micro” Timing Checklist

Use this every time you make a decision:

Step 1 — BTC • MACRO (1M)

What cycle phase are we in?

Blue/White = Risk-On

Orange/Red = Risk-Off

Step 2 — BTC • DCA (1W)

Is weekly momentum healthy or overheated?

Blue = DCA

Orange = Trim

Step 3 — ALT • MACRO (1W)

Is liquidity flowing *into* or *out of* altcoins?

Step 4 — ALT • DCA (1D)

Are individual alts in blue (buy), white (hold), or orange (sell)?

Crypto Colin Says:

“This is the order I check every day:

BTC Macro → BTC DCA → ALT Macro → ALT DCA

Top to bottom. Monthly to daily.

If you follow this flow, you’ll always move with the cycle — never against it.”

6 High-Confidence Patterns to Watch

Here are the most powerful combinations in the entire suite:

Pattern	Meaning	Action
Double Blue Setup	BTC Macro blue + BTC DCA blue	Generational DCA
Orange Sync	BTC Macro orange + ALT Macro orange	Cycle peak forming → sell
ETHBTC Rising + ALT Macro Blue	Early altseason	Rotate into ETH/alts
ALT Macro Red + BTC Dominance Rising	Liquidity drain	Exit alts → BTC/USDT
Blue Reset After Red	Full cycle restart	Rebuild positions

7 The Profit Ladder (Color-Based Selling System)

This is your automated, emotion-free selling plan:

Color	Market Phase	Sell %	What It Means
 Blue	DCA Phase	0%	Only accumulate
 White	Fair Value	0–10%	Trim if overweight
 Orange	Overheated	15–25%	Start selling
 Green	Parabolic	25–40%	Sell aggressively
 Red	Peak	50–70%	Major exit
 Purple	Blow-Off	90–100%	Exit everything

Pro Tip:

“Never fall in love with the big green candle.
When the screen turns orange → trim.
When it turns red → rotate.”

🧩 8 Macro + DCA Confluence (The “Holy Grail” Combo)

These combinations deliver the **strongest signals** in the entire suite:

Combo	What It Means	Strategy
BTC Macro Blue + BTC DCA Blue	Generational BTC DCA	Build core
ALT Macro Blue + ALT DCA Blue	Alt accumulation	Scale into high-conviction alts
BTC Macro Orange + ALT Macro Orange	Market-wide risk	Sell into strength
BTC DCA Orange + ALT DCA Orange	Short-term exhaustion	Stop DCA, de-risk
Both Reset to Blue	Fresh cycle	Begin new plan

🔑 9 The Cycle OS (One-Sentence Summary)

BTC Leads → ETH Confirms → TOTAL3 Expands → OTHERS Peaks → Reset → Repeat.

This pattern has repeated in every single crypto cycle to date — the only difference is who recognizes it early.

💬 Crypto Colin Says:

“Crypto isn’t random — it’s rhythmic. Your job isn’t to predict the rhythm... It’s to *move with it.*”

✅ 10 Quick-Reference Dashboard (Print This)

Step	Indicator	Timeframe	What It Tells You
1	BTC Macro	1M	Macro direction (up, peak, or reset)
2	BTC DCA	1W	Weekly trend & momentum
3	ALT Macro	1W	Liquidity rotation (into/out of alts)
4	ALT DCA	1D	Precision timing for entries/exits

This is your complete cycle command center.

PART 7 — QUICK REFERENCE TOOLKIT & STRATEGY CARDS

“Your Printable Cheat-Sheets for Daily & Weekly Navigation”

This section turns the entire CryptoCycle Indicator Suite into **simple, fast-reference strategy cards** that you can print or keep beside your TradingView setup.

These cards are designed so ANY beginner can follow the system **without guessing**, even in high-emotion market conditions.

1 Color & Emotion Legend (Universal Across All Indicators)

This is the foundation of the entire suite — the emotional translation of every color band.

Color	Market Phase	Emotion	What You Should Do
 Mania Top	Blow-off / Distribution	Greed / FOMO	Exit majority, protect capital
 Parabolic Top	Euphoric Expansion	Overconfidence	Trim heavily
 Realistic Top	Late-Cycle Growth	Excitement	Begin profit ladder
 Fair Value	Mid-Cycle Equilibrium	Neutral	Hold core, monitor
 Deep Value	Early Recovery	Fear	Gradual DCA
 Bottoming	Capitulation	Panic / Despair	High-conviction accumulation

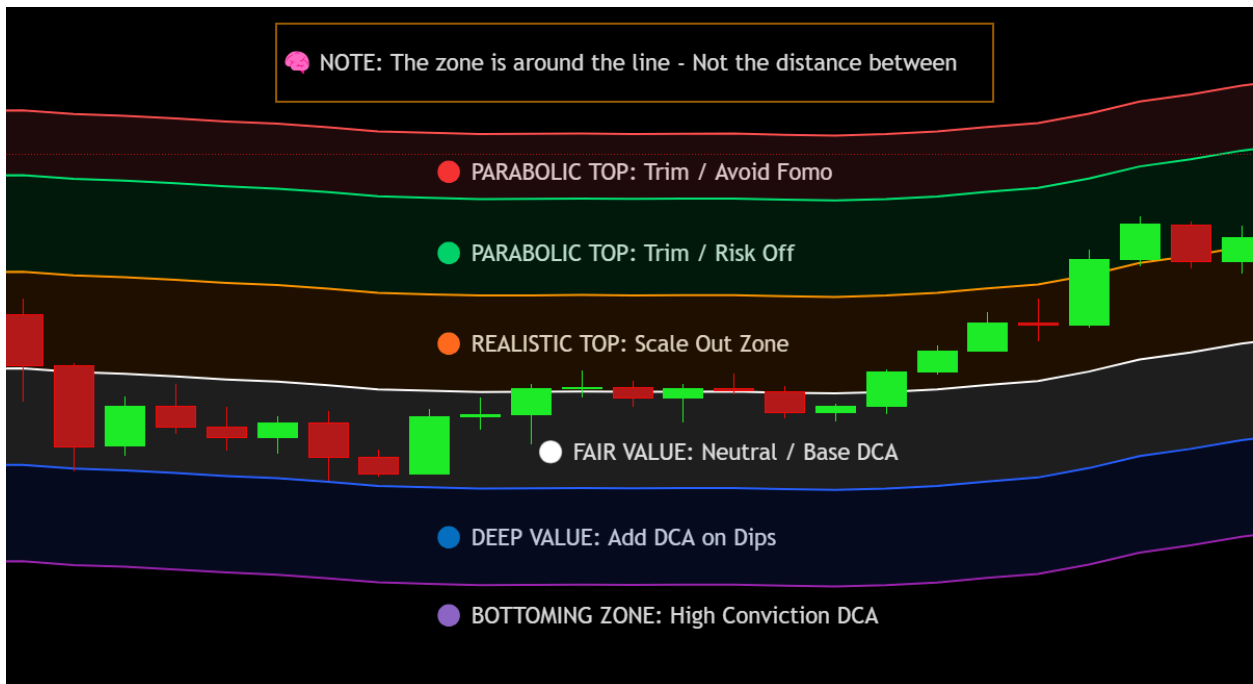
Crypto Colin Says:

“Colors don’t lie. When the chart is blue or purple, fear is lying to you. When it turns orange or green, greed is lying to you. Act on the colors — not the emotions.”

📍 2 BTC • MACRO — Monthly Cycle Map Card

Purpose: Identify long-term cycle phase & macro risk.

Zone	Meaning	Action
🟡 / 🔵	Cycle bottom / deep value	DCA heavily into BTC & ETH
⚪	Fair-value equilibrium	Hold core
🟠	Late-cycle expansion	Begin profit ladder
🟢 / 🔴	Parabolic / mania	Exit progressively
🔄 After Red → Blue	Cycle reset	Re-accumulate quietly



💬 Crypto Colin Says:

“Every cycle goes from blue → red → blue again. The pros ride the wave. The amateurs drown in it.”

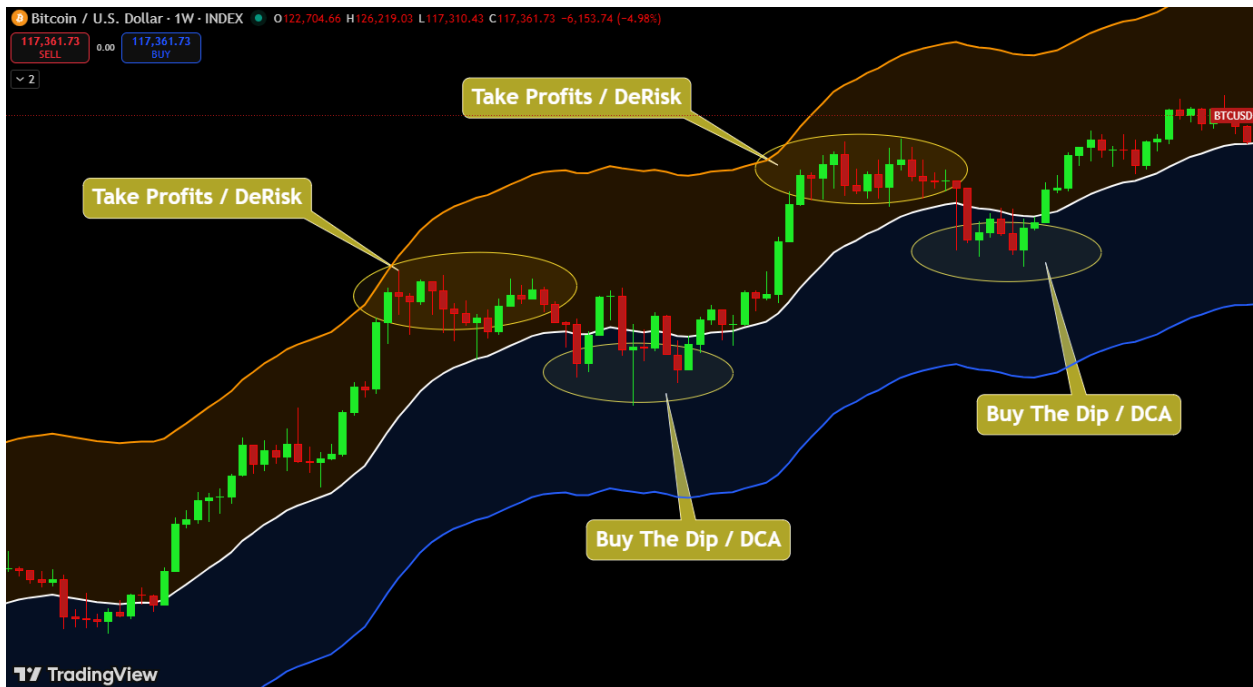
3 BTC • DCA — Weekly Momentum Card

Purpose: Time weekly momentum and DCA rhythm.

Zone	Signal	Action
●	Undervalued	Add DCA positions
●	Fair value	Hold / wait
●	Overheated	Take profits / pause buys

Weekly Checklist:

- BTC below white? → Buy
- BTC above orange? → Sell/Trim
- RSI < 40? → Strong DCA signal
- RSI > 70 or funding high? → Trim



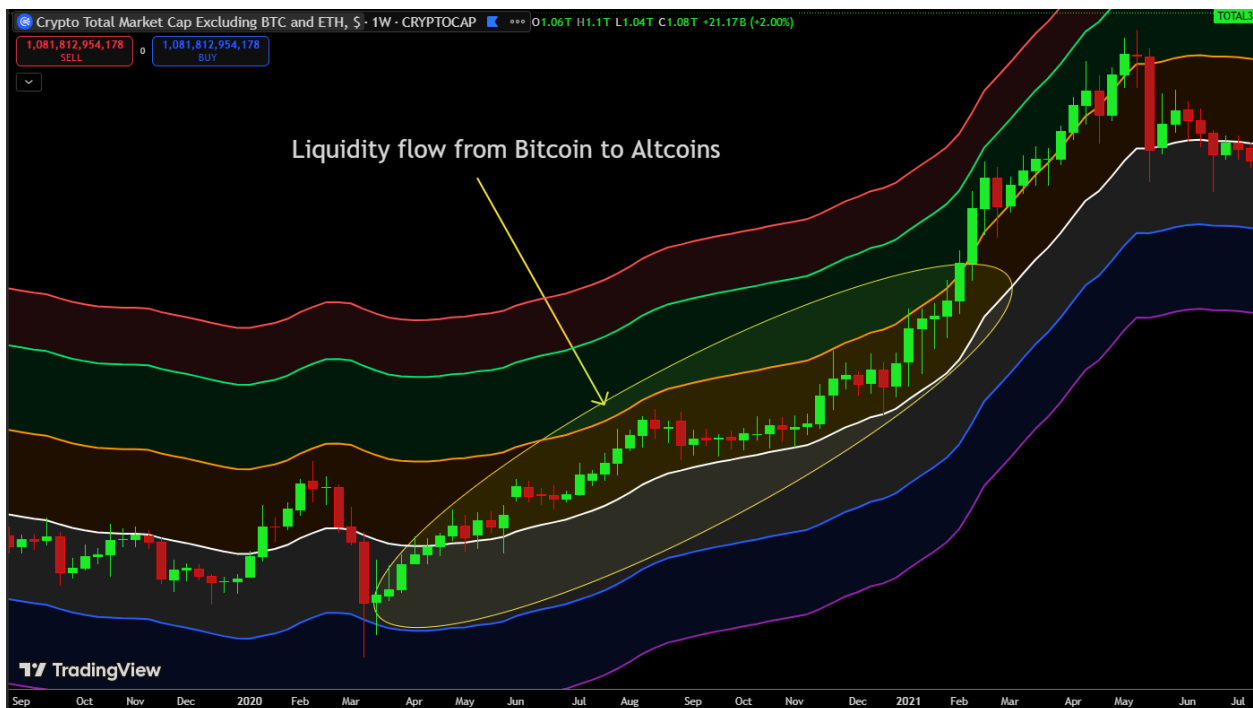
4 ALT • MACRO — Weekly Liquidity Map Card

Purpose: See where liquidity is flowing across altcoins.

Zone	Liquidity Behavior	Action
● / ●	Post-crash / accumulation	DCA high-conviction alts
●	Mid-cycle rotation	Hold cores
● / ●	Speculative surge	Take profits
●	Liquidity exit	Rotate to BTC/stables




Watch For:

- BTC Dominance ↓ + ALT Macro ↑ = Altseason warming
- Fear & Greed > 80 + Orange = De-risk immediately



5 ALT • DCA — Daily Momentum Card

Purpose: Daily timing for entries & exits on individual alts.

Zone	Market State	Action
	Short-term oversold	DCA
	Fair-value	Hold
	Overheated	Trim / stop buying

Daily Routine:

- 1 Check ALT MACRO (weekly)
- 2 Open ALT DCA (daily)
- 3 Match action to zone
- 4 Confirm with RSI & volume

6 Cycle Integration Flow Card (Top → Bottom System)

This is your daily/weekly **decision-making flowchart**.

1 BTC • MACRO (Monthly)

→ Determines global risk-on/risk-off

2 BTC • DCA (Weekly)

→ Confirms momentum strength

3 ALT • MACRO (Weekly)

→ Shows where liquidity is rotating

4 ALT • DCA (Daily)

→ Tells you when to act (enter/exit)

🔑 Key Signal Combos (Extremely Powerful)

Combo	Meaning	Action
BTC Blue + ALT Blue	Deep accumulation	DCA heavily
BTC Orange + ALT Orange	Cycle peak forming	De-risk
ALT Blue + ETHBTC Rising	Early altseason	Rotate into ETH/alts
ALT Red + BTC.D Rising	End of rotation	Exit alts

💰 7 Profit Ladder Template (Simple & Automatic)

Use this with any asset, especially alts.

Band Color	% to Sell	Goal
🟡 → 🟠	10%	Early profit
🟠	15–25%	Reduce risk
🟢	25%+	Secure gains
🔴	Remainder	Protect capital

💬 Crypto Colin Says:

“It’s not about hitting the top — it’s about keeping profits. The ladder makes it automatic.”

🧱 8 Portfolio Allocation Cheat-Sheet

Cycle Stage	BTC	Alts	Stables	Mindset
Bottom (blue/purple)	50%	40%	10%	Accumulate
Mid (white)	40%	40%	20%	Balanced
Late (orange)	50%	25%	25%	Rotate
Euphoria (green/red)	70%	10%	20%	Protect

9 Emotional Translator Card








This card helps fight FOMO, fear, and panic.

What You Feel	What Chart Says	Correct Action
"This is over!"	Blue/Purple	DCA
"I don't want to miss out!"	Orange/Green	Take profits
"It's different this time."	Red	Exit majority
"It's boring again."	White	Hold patiently

Crypto Colin Says:

"If you can translate emotions into colors, you never need a guru again."

10 Cycle Operating System Summary (1 Sentence)

 →  →  →  →  →  →  → **(repeat)**
Accumulation → Expansion → Euphoria → Reset

Macro → Micro Checklist:

- BTC Macro = Compass
- BTC DCA = Rhythm
- ALT Macro = Rotation Radar
- ALT DCA = Precision Trigger

Closing Message

From Crypto Colin:

"You now have the same toolkit I use to navigate every crypto cycle.
Trust the colors. Trust the rhythm.
If you stay disciplined, the market will reward you every cycle."