

EXPLORING A PARTNERSHIP

Working Together

Supporting PRI Academy's Next Phase



→ HELLO THERE!

A Little Bit About Us

Learning Design and Strategy

- Curriculum design
- Streamlining existing courses
- Learning needs analysis & ecosystem mapping
- Project management from the get-go



Creative Development and Production

- eLearning and blended course design
- Video, animation, and visual storytelling
- Voice over and sound design
- AI strategy and implementation
- Gamification, immersive experiences, and webinars

Learning Operations and Support

- Rapid prototyping and pilot builds
- LMS setup and administration support
- Quality assurance, updates, and ongoing content management
- Project management and delivery oversight

Community and Advisory

- Access to 1,900+ freelance learning professionals
- On-demand specialists for sprints or global rollouts
- Partnership on new product or Academy launches

IDLance is a flexible learning partner that provides on-demand access to instructional design, learning operations support, and specialist talent through a global network of 1,900+ learning professionals. We help organisations reduce delivery risk, scale capacity, and evolve learning experiences in a way that fits shifting strategy, timelines, and budget realities, so one person isn't expected to do the work of five.

Inside is a high-level summary of how this could look in practice for PRI Academy.

1900+

Community Members

6 years

Supporting L&D Teams

10+

Industries Served

<48 hrs

Talent Placement

→ WHERE IDLANCE COULD ADD VALUE

Key Areas of Focus

From our conversation, a few key areas stood out:



Operational resilience

Reducing reliance on a single instructional designer by providing pooled, on-demand capacity.



Evolving the learning experience

Helping move beyond text-heavy formats toward more applied, practical, and engaging learning for different audiences (emerging markets, mature markets, different investor types).



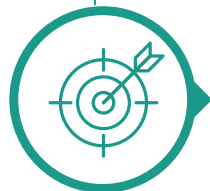
Learning design and delivery support

Supporting ongoing course updates, maintenance, and improvements, as well as larger initiatives when needed.



Rapid prototyping and experimentation

Testing new formats such as modular courses, case studies, blended learning, or applied pilots without large upfront commitments.



Strategic alignment

Supporting alignment of education offerings with MyPRI, pathways, and learner journeys by role or maturity level.

→ PRICING OPTIONS

Typical Ways We Work Together

We usually engage in one or more of the following ways, depending on the clarity of strategy and internal capacity.



Embedded Learning Support (Retainer)

Typical range:
£6,000–£9,000 per month
Approximately:
£72,000–£108,000 per year

- ✓ Ongoing access to on-demand instructional design and learning operations support
- ✓ Ability to scale up or down as needs change
- ✓ Often used to provide maintenance, incremental updates, design support, risk mitigation, and light advisory services



Scoped Projects (Fixed Fee)

Typical range:
£18,000–£110,000+
depending on scope and complexity
Priced per project, not by hours.

For discrete pieces of work with clearly defined outcomes, such as:

- ✓ New course development or major redesigns
- ✓ Pathway or learner-journey alignment work
- ✓ Applied or advanced learning pilots
- ✓ Case studies, blended learning, or facilitation support



Short Time-Boxed Sprints

Typical range:
£12,000–£30,000

- ✓ Used when the strategy is still forming, and clarity is needed before a larger investment
- ✓ Examples include learning journey mapping, gap analysis, or rapid concept prototypes.
- ✓ These are designed to be low-commitment, high-clarity pieces of work

→ HOW WE BUILD A QUOTE

How Pricing is Determined

Pricing typically depends on factors such as:



Volume and complexity of content

More content (or more technical content) typically requires more design and build time.



Speed to delivery

Tighter timelines may require additional capacity to meet deadlines.



Level of stakeholder coordination

More reviewers and approval cycles usually means more project management and iteration.



Global or localised delivery needs

Localisation, accessibility, and multi-region rollout add coordination and production effort.



Media mix (text, video, interactive, facilitation)

Different formats vary in effort, especially video, interactive builds, and live components.



Ongoing support vs. one-off delivery

Retained support covers continuous updates; one-off work is scoped as a discrete project.

We aim to keep pricing transparent, predictable, and aligned with not-for-profit and mission-driven contexts.

Often in the past, we have started with 4-6 week sprints with organisations as trust-building exercises where we have identified gaps, outlined objectives, and prepared the architecture for various learning pathways.

Given that PRI Academy is still shaping its future direction, a lightweight initial engagement could be helpful.

We are very happy to keep things flexible and explore what level of support would be most useful once there is more clarity following internal planning and board discussions!

Check Out Some of Our Work



Rise

“Meet the Jaspers” Rise Course

A short Rise sample that shows our approach to structuring content, writing in a human voice, and making technical content fun.

Video

Video Samples

A few examples of polished video and AI-powered video learning content, including scripting, visual structure, and learner-friendly pacing.

7taps

7taps Samples

Quick microlearning examples designed to prove you can teach something meaningful in under five minutes! All from your phone!

Animation

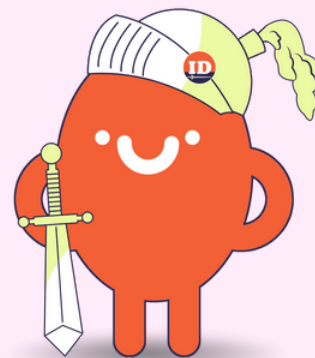
Animation Samples

Short motion/animation clips that demonstrate how we use visuals to make concepts clearer, more modern, and easier to remember.

Stay in Touch With Us!

Thank you again for your time and the great conversation. We'd love to stay in touch as PRI Academy continues shaping next steps, and we're happy to answer any questions along the way.

THANK
YOU!!



Website

www.idlance.com



E-mail

kezia@idlance.com



LinkedIn

www.linkedin.com/company/idlance



Calendly

[Click here to book a call](#)