









PREMADE CABLE CHART - REV 3-31-14

ID	MFR	PART NO.	PLENUM / NON	USE	LENGTH	DESCRIPTION
PA1	EXTRON	26-571-03	N	CC	6 Ft.	3.5mm MINI TRS AUDIO CABLE M/M
PA2	EXTRON	26-571-06	N	CC	12 Ft.	3.5mm MINI TRS AUDIO CABLE M/M
PA3	STELLAR LABS (MCM)	24-12105	N	G	50 Ft.	4-POLE 3.5mm M-F EXTENSION CABLE
PV1	EXTRON	26-567-01	N	CC	3 Ft.	MVGA M-M/3 MICRO VGA CABLE
PV2	EXTRON	26-567-02	N	CC	6 Ft.	MVGA M-M/6 MICRO VGA CABLE
PV3	EXTRON	26-567-03	N	CC	12 Ft.	MVGA M-M/12 MICRO VGA CABLE
PV4	COMPREHENSIVE	MVGA15P-P-3HR/A	N	T/R/E/G	3 Ft.	HD15 M/M + 3.5mm MINI STEREO PLUG CABLE
PV5	COMPREHENSIVE	MVGA15P-P-6HR/A	N	T/R/E/G	6 Ft.	HD15 M/M + 3.5mm MINI STEREO PLUG CABLE
PV6	COMPREHENSIVE	MVGA15P-P-15HR/A	N	T/R/G	15 Ft.	HD15 M/M + 3.5mm MINI STEREO PLUG CABLE
PV7	COMPREHENSIVE	MVGA15P-P-25HR/A	N	T/R/G	25 Ft.	HD15 M/M + 3.5mm MINI STEREO PLUG CABLE
PV8	COMPREHENSIVE	VGA15P-P-15HR/AP-ID	P	W	15 Ft.	HD15 MALE TO HD15 MALE ID/DDC W/ 3.5mm MINI AUDIO CABLE
PV9	COMPREHENSIVE	VGA15P-P-25HR/AP-ID	P	W	25 Ft.	HD15 MALE TO HD15 MALE ID/DDC W/ 3.5mm MINI AUDIO CABLE
PV10	COMPREHENSIVE	VGA15P-P-35HR/AP-ID	P	W	35 Ft.	HD15 MALE TO HD15 MALE ID/DDC W/ 3.5mm MINI AUDIO CABLE
PV11	COMPREHENSIVE	VGA15P-P-50HR/AP-ID	P	W	50 Ft.	HD15 MALE TO HD15 MALE ID/DDC W/ 3.5mm MINI AUDIO CABLE
PH1	EXTRON	26-667-03	N	CC	3 Ft.	HDMI MICRO/3 HIGH SPEED CABLE
PH2	EXTRON	26-667-06	N	CC	6 Ft.	HDMI MICRO/6 STANDARD SPEED CABLE
PH3	EXTRON	26-663-06	N	CC	6 Ft.	HDMI ULTRA/6 HIGH SPEED CABLE
PH4	EXTRON	26-663-09	N	CC	9 Ft.	HDMI ULTRA/9 HIGH SPEED CABLE
PH5	EXTRON	26-663-12	N	CC	12 Ft.	HDMI ULTRA/12 HIGH SPEED CABLE
PH6	EXTRON	26-663-15	N	CC	15 Ft.	HDMI ULTRA/15 HIGH SPEED CABLE
PH7	COMPREHENSIVE	MHD-MHD-18INPROBLK	N	T/R/E	1.5 Ft.	MICROFLEX H.S. HDMI CABLE WITH PROGRIP
PH8	COMPREHENSIVE	MHD-MHD-3PROBLK	N	T/R/E	3 Ft.	MICROFLEX H.S. HDMI CABLE WITH PROGRIP
PH9	COMPREHENSIVE	MHD-MHD-6PROBLK	N	T/R/E	6 Ft.	MICROFLEX H.S. HDMI CABLE WITH PROGRIP
PH10	COMPREHENSIVE	MHD-MHD-9PROBLK	N	T/R	9 Ft.	MICROFLEX H.S. HDMI CABLE WITH PROGRIP
PH11	COMPREHENSIVE	MHD-MHD-12PROBLK	N	T/R	12 Ft.	MICROFLEX H.S. HDMI CABLE WITH PROGRIP
PH12	COMPREHENSIVE	MHD-MHD-15PROBLK	N	T/R	15 Ft.	MICROFLEX H.S. HDMI CABLE WITH PROGRIP
PH13	CRESTRON	CBL-HD-1.5	N	T/R/E/G	1.5 Ft.	CRESTRON CERTIFIED HDMI INTERFACE CABLE
PH14	CRESTRON	CBL-HD-3	N	T/R/E/G	3 Ft.	CRESTRON CERTIFIED HDMI INTERFACE CABLE
PH15	CRESTRON	CBL-HD-6	N	T/R/E/G	6 Ft.	CRESTRON CERTIFIED HDMI INTERFACE CABLE
PH16	CRESTRON	CBL-HD-12	N	T/R/G	12 Ft.	CRESTRON CERTIFIED HDMI INTERFACE CABLE
PH17	CRESTRON	CBL-HD-20	N	T/R/G	20 Ft.	CRESTRON CERTIFIED HDMI INTERFACE CABLE
PH18	CRESTRON	CBL-HD-30	N	T/R/G	30 Ft.	CRESTRON CERTIFIED HDMI INTERFACE CABLE
PH19	COMPREHENSIVE	HD-HD-3EPROBLK	N	W/G	3 Ft.	PRO AV/IT H.S. HDMI CABLE WITH PROGRIP, BLACK
PH20	COMPREHENSIVE	HD-HD-6EPROBLK	N	W/G	6 Ft.	PRO AV/IT H.S. HDMI CABLE WITH PROGRIP, BLACK
PH21	COMPREHENSIVE	HD-HD-15EPROBLK	N	W/G	15 Ft.	PRO AV/IT H.S. HDMI CABLE WITH PROGRIP, BLACK
PH22	COMPREHENSIVE	HD-HD-25EPROBLK	N	W/G	25 Ft.	PRO AV/IT H.S. HDMI CABLE WITH PROGRIP, BLACK
PH23	COMPREHENSIVE	HD-HD-25PROP	P	W	25 Ft.	PRO AV/IT H.S. HDMI WITH PROGRIP
PH24	COMPREHENSIVE	HD-HD-35PROP	P	W	35 Ft.	PRO AV/IT H.S. HDMI WITH PROGRIP
PH25	COMPREHENSIVE	HD-HD-40PROP	P	W	40 Ft.	PRO AV/IT H.S. HDMI WITH PROGRIP
PH26	COMPREHENSIVE	HD-HD-50PROP	P	W	50 Ft.	PRO AV/IT H.S. HDMI WITH PROGRIP
PF1	CABLES TO GO	40390	N	G	3 Ft.	TOSLINK OPTICAL DIGITAL CABLE
PF2	LIBERTY	DL-AOCHP-010M	P	G	33 Ft.	HYBRID COPPER/FIBER HDMI CABLE
PF3	LIBERTY	DL-AOCHP-015M	P	G	50 Ft.	HYBRID COPPER/FIBER HDMI CABLE
PF4	LIBERTY	DL-AOCHP-020M	P	G	65 Ft.	HYBRID COPPER/FIBER HDMI CABLE
PF5	LIBERTY	DL-AOCHP-023M	P	G	75 Ft.	HYBRID COPPER/FIBER HDMI CABLE
PF6	LIBERTY	DL-AOCHP-030M	P	G	100 Ft.	HYBRID COPPER/FIBER HDMI CABLE
PF7	LIBERTY	DL-AOCHP-050M	P	G	165 Ft.	HYBRID COPPER/FIBER HDMI CABLE
PF8	LIBERTY	DL-AOCHP-060M	P	G	197 Ft.	HYBRID COPPER/FIBER HDMI CABLE

USE LEGEND: CABLE CUBBY = CC, WALL/CEILING = W, UNDER TABLE = T, GENERAL (CLIENT) CONNECT = G, RACKS = R, EXTENDER CONNECT = E

WIRE CHART - REV 02-01-2019

TYPE	BELDEN PART NUMBER	WINDY CITY WIRE PART NUMBER	O.D. IN INCHES	SIGNAL APPLICATION	DESCRIPTION
A	5000UE	12-02-BLK	0.250	SPEAKER - LO Z	12AWG, 2 COND, STRANDED, PVC JACKET, UNSHIELDED
AA	6000UE	12-02P-BLK	0.252	SPEAKER - LO Z	PLENUM, 12AWG, 2 COND, STRANDED, FA JACKET, UNSHIELDED
B	5100UE	14-02-BLK	0.210	SPEAKER - LO Z	14AWG, 2 COND, STRANDED, PVC JACKET, UNSHIELDED
BB	6100UE	14-02P-BLK	0.210	SPEAKER - LO Z	PLENUM, 14AWG, 2 COND, STRANDED, FA JACKET, UNSHIELDED
C	5200UE	16-02-BLK	0.176	SPEAKER - LO Z & 70V	16AWG, 2 COND, STRANDED, PVC JACKET, UNSHIELDED
CC	6200UE	16-02P-BLK	0.184	SPEAKER - LO Z & 70V	PLENUM, 16AWG, 2 COND, STRANDED, FA JACKET, UNSHIELDED
D	5300UE	18-02-BLK		SPEAKER - 70V	18AWG, 2 COND, STRANDED, PVC JACKET, UNSHIELDED
DD	6300UE	18-02P-BLK	0.158	SPEAKER - 70V	PLENUM, 18AWG, 2 COND, STRANDED, FA JACKET, UNSHIELDED
E	9451	22-1PREZ-BLK	0.127	MIC/LINE	22AWG, 2 COND, TWISTED PAIR, STRANDED, SHIELDED
EE	9451P	22-1PREZP-BLK	0.135	MIC/LINE	PLENUM, 22AWG, 2 COND, STRANDED, FA JACKET, SHIELDED
F	1505A	659111	0.233	COMPOSITE VIDEO	75 OHM, RG59/U, 20AWG, PVC JACKET, SHIELDED
FF	1506A	659211-110	0.214	COMPOSITE VIDEO	PLENUM, 75 OHM, RG59/U, 20AWG, FA JACKET, SHIELDED
H	1694A	RG6HD-BLK	0.274	HD/SDI VIDEO/BROADCAST	75 OHM, RG6/U, 18AWG, PVC JACKET, SHIELDED
HH	1695A	RG6HDP	0.235	HD/SDI VIDEO/BROADCAST	PLENUM, 75 OHM, RG6/U, 18AWG, FA JACKET, SHIELDED
I	1279R	9RGB5CSOLPVC	0.350	RGBHV	75 OHM, 26AWG, 5 COAX, PVC JACKET, SHIELDED
II	1279P	9RGB5CSOLPLN	0.300	RGBHV	PLENUM, 75 OHM, 26AWG, 5 COAX, FEP JACKET, SHIELDED
N	2412	CAT6-BLK	0.190	CAT-6 DATA	24AWG, 8 COND, DATA TWIST 5, PVC JACKET, UNSHIELDED
NN	2413	CAT6P-BLK	0.190	CAT-6 DATA	PLENUM, 24AWG, 8 COND, DATA TWIST 5, FA JACKET, UNSHIELDED
O	10GX52F	CAT6AS-BLK	0.290	HDBaseT (CAT-6A)	24AWG, 8 COND, PVC JACKET, SHIELDED
OO	10GX53F	CAT6ASP-BLK	0.275	HDBaseT (CAT-6A)	PLENUM, 24AWG, 8 COND, FA JACKET, SHIELDED
P	1392A	CRESCOM	0.250	CRESTRON/AMXNET	DATA 22 AWG, POWER 18 AWG, SHIELDED, PVC JACKET
PP	1502P	CRESCOMP	0.210	CRESTRON/AMXNET	PLENUM DATA 22 AWG, POWER 18 AWG, SHIELDED, PLENUM JACKET
W	9248	RG6-BLK	0.270	RF ANTENNA	75 OHM, RG-6/U, 18AWG, PVC JACKET, SHIELDED
WW	89248	RG6P-BLK	0.222	RF ANTENNA	PLENUM, 75 OHM, RG-6/U, 18AWG, FP JACKET, SHIELDED
Z	9913	RG8-BLK	0.405	RF ANTENNA	50 OHM, RG-8/U, 10AWG, 1 COAX, PVC JACKET, SHIELDED
ZZ	7733A	RG8P-BLK	0.355	RF ANTENNA	PLENUM, 50 OHM, RG-8/U, 10AWG, 1 COAX, FA JACKET, SHIELDED

DEVICE ID NUMBERING STANDARDS

DEVICE ID CONFORMS TO THE FOLLOWING CONVENTION:

XXX-SNN

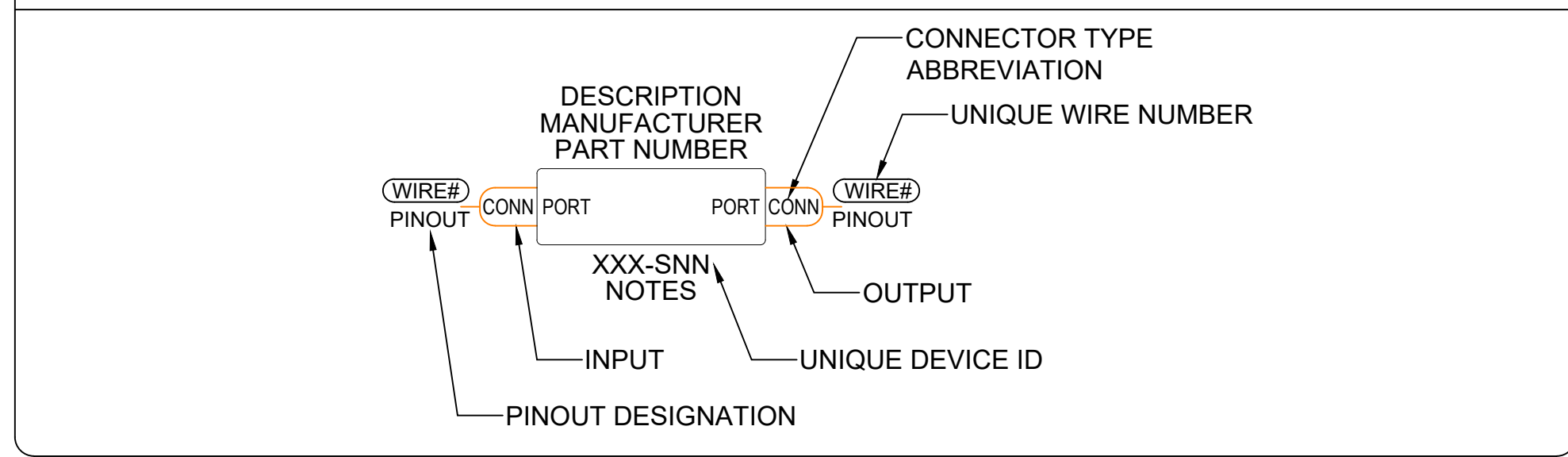
XXX = INDICATES DEVICE TYPE (SEE CHART BELOW).

S = INTENDED FOR USE ONLY IN LARGE SYSTEMS. THIS NUMERIC VALUE DENOTES THE SUBSYSTEM. WHEN USED IT CORRESPONDS TO THE SUBSYSTEM VALUE THAT IS ALSO INCORPORATED INTO THE WIRE NUMBER AND DRAWING NUMBER.

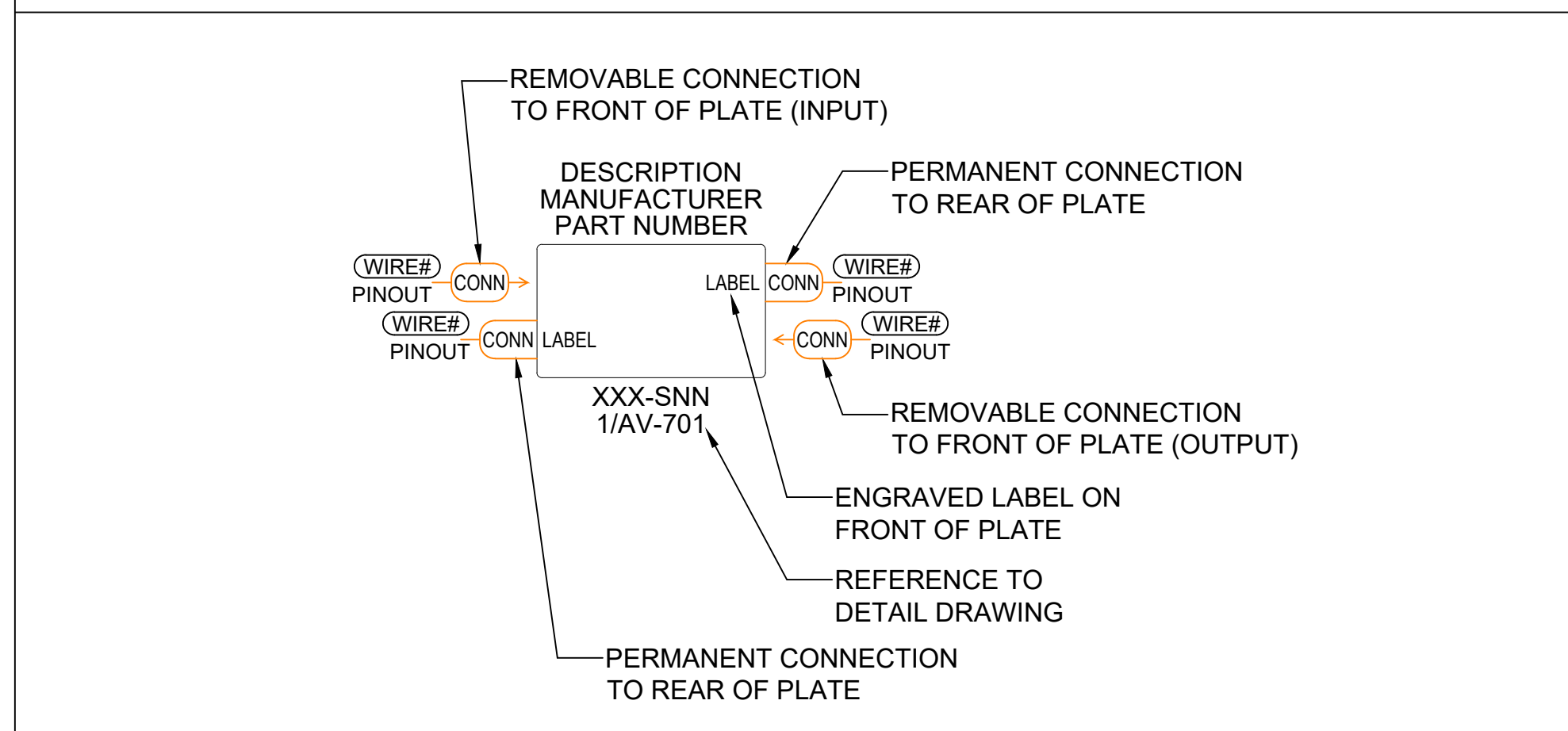
NN = UNIQUE INCREMENTAL NUMERIC VALUE. THE LEADING ZERO IS ALWAYS INCLUDED AS A PLACEHOLDER.

ABR.	DEVICE DESCRIPTION	ABR.	DEVICE DESCRIPTION
ALS	ASSISTIVE LISTENING SYSTEM	PB	PATCH BAY
ANT	ANTENNA	PC	COMPUTER
AVR	AUDIOVISUAL EQUIPMENT RACK	PDU	POWER DISTRIBUTION UNIT
CAM	VIDEO CAMERA	PRE	PRE-AMPLIFIER
CB	CEILING BOX	PRJ	VIDEO PROJECTOR
CC	CAMERA CONTROL	PSU	POWER SUPPLY UNIT
CI	CONTROL INTERFACE	RC	REMOTE CONTROL
CU	CONTROL UNIT	REC	RECORDER
DA	DISTRIBUTION AMPLIFIER	RF	RF EQUIPMENT
DAC	DIGITAL AUDIO CONVERTER	RX	RECEIVER
DEC	DECODER	SAT	SATELLITE EQUIPMENT
DS	DOCKING STATION	SCN	PROJECTION SCREEN
DSP	DIGITAL SIGNAL PROCESSOR	SIG	SIGNAL CONVERTER
ENC	ENCODER	SPK	SPEAKER
ERP	EQUIPMENT RACK PANEL	SUB	SUBWOOFER
ETH	ETHERNET EQUIPMENT	SUM	PASSIVE COMBINER
FB	FLOOR BOX	SVR	SERVER
FBR	FIBER OPTIC EQUIPMENT	SW	SWITCHER
FP	FLOOR PLATE	TB	TABLE BOX
FRM	CARD FRAME	TP	TOUCHPANEL
IC	INTERCOM EQUIPMENT	TTB	TERMINAL BLOCK
IR	INFRARED TRANSMITTER	TU	TV/RF TUNER
JB	JUNCTION BOX	TX	TRANSMITTER
KP	KEYPAD	UPS	UNINTERRUPTIBLE POWER SUPPLY
LFT	LIFT	USB	USB DEVICE/INTERFACE
MIC	MICROPHONE	VOL	VOLUME CONTROL
MON	VIDEO MONITOR	VPU	VIDEO PROCESSING UNIT
MP	MEDIA PLAYER (inc. physical media)	VTC	VIDEO CONFERENCING UNIT
MPC	MEDIA PROCESSOR & CONTROLLER (ALL-IN-ONE)	WAP	WIRELESS ACCESS POINT
MXA	MIXER AMPLIFIER	WP	WALL PLATE
MXR	MIXER	WRX	WIRELESS RECEIVER
NSW	ETHERNET NETWORK SWITCH	WTX	WIRELESS TRANSMITTER
OCS	OCCUPANCY SENSOR	XFR	TRANSFORMER
PA	POWER AMPLIFIER		

DEVICE BLOCKS



INTERFACE PANELS AND PLATES

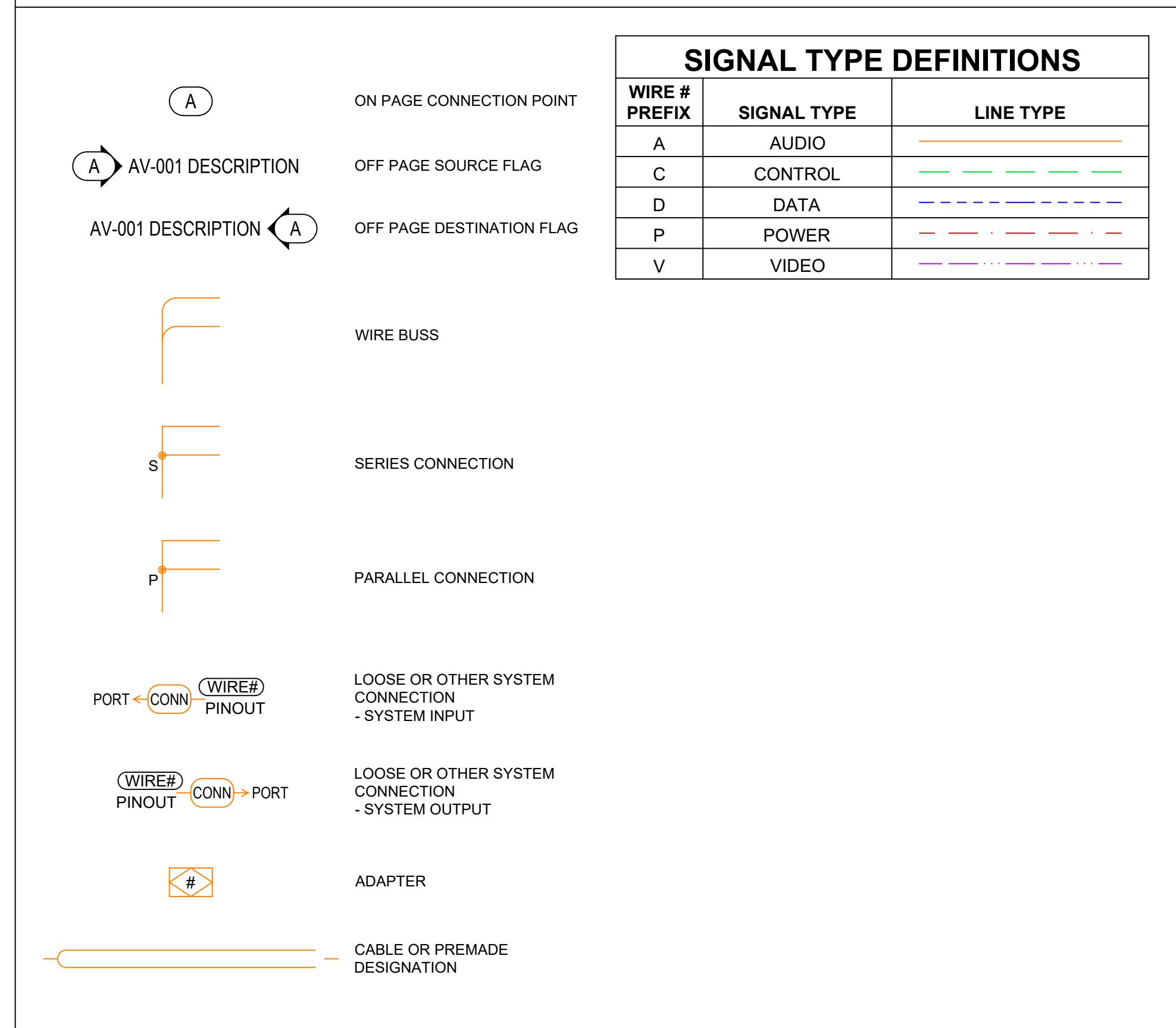


CABLE CONNECTOR ABBREVIATIONS

t = TYPE (VARIES BY CONNECTOR)  
p = NUMBER OF PINS  
# = NUMBER OF CONNECTORS  
g = GENDER (M=MALE, F=FEMALE)

ABR.	DESCRIPTION
#BNC	BNC
Dpg	D-SUB
DP	DISPLAY PORT
MDP	MINI DISPLAY PORT
DVIt	DVI (D or I)
F	F
Hpg	HD D-SUB
HDMI	HDMI
HDMN	MINI HDMI
HDMC	MICRO HDMI
#MD	MINI-DIN
#DIN	DIN
MXpg	MINI-XLR
PHX	PHOENIX
#RCA	RCA
RJt	RJ (11, 12, 45, 50)
SJ45	SHIELDED RJ 45
USBt	USB (A, B, C, micro B, mini B)
FwP	FIREWIRE
FJ	FJ FIBER
LC	LC FIBER
SC	SC FIBER
ST	ST FIBER
TOS	TOSLINK
NLp	SPEAKON
TERM	TERMINAL
3.5S	3.5mm TIP/RING/SLEEVE
3.5RS	3.5mm TIP/RING/SLEEVE
3.5M	3.5mm TIP/SLEEVE
TRS	1/4" PHONE TIP/RING/SLEEVE
TS	1/4" PHONE TIP/SLEEVE
XLpg	XLR
WALT	WALTA
DC	DC POWER
IEC	IEC POWER
N115	NEMA "2-PRONG" POWER
N515	NEMA "3-PRONG" POWER 15A
N520	NEMA "3-PRONG" POWER 20A
L520	NEMA LOCKING POWER 20A
L530	NEMA LOCKING POWER 30A
WW	"WALL WART" EXTERNAL POWER SUPPLY
IR	IR PROBE
(NONE)	CABLE THAT CANNOT BE DISCONNECTED

WIRING SYMBOLS



REV.	DATE	BY
△		



PROJECT: PILOT PROJECT MEETING ROOM  
DRAWING TITLE: AUDIOVISUAL CABLE LEGEND & DEVICE ABBREVIATIONS

SCALE: NONE  
DATE: 2022/12/12  
DRAWN BY: KENNY  
CHECKED BY: DUSTIN  
PROJECT NUMBER: PILOT PROJECT  
DRAWING #: AV-104







REV.	DATE	BY
△		



PROJECT: PILOT PROJECT MEETING ROOM  
DRAWING TITLE: MEETING ROOM CEILING PLANS

SCALE: NONE  
DATE: 2022/12/12

DRAWN BY: KENNY	PROJ ENG: DUSTIN
CHECKED BY: DUSTIN	PROJ MGR: DUSTIN

PROJECT NUMBER:  
PILOT PROJECT

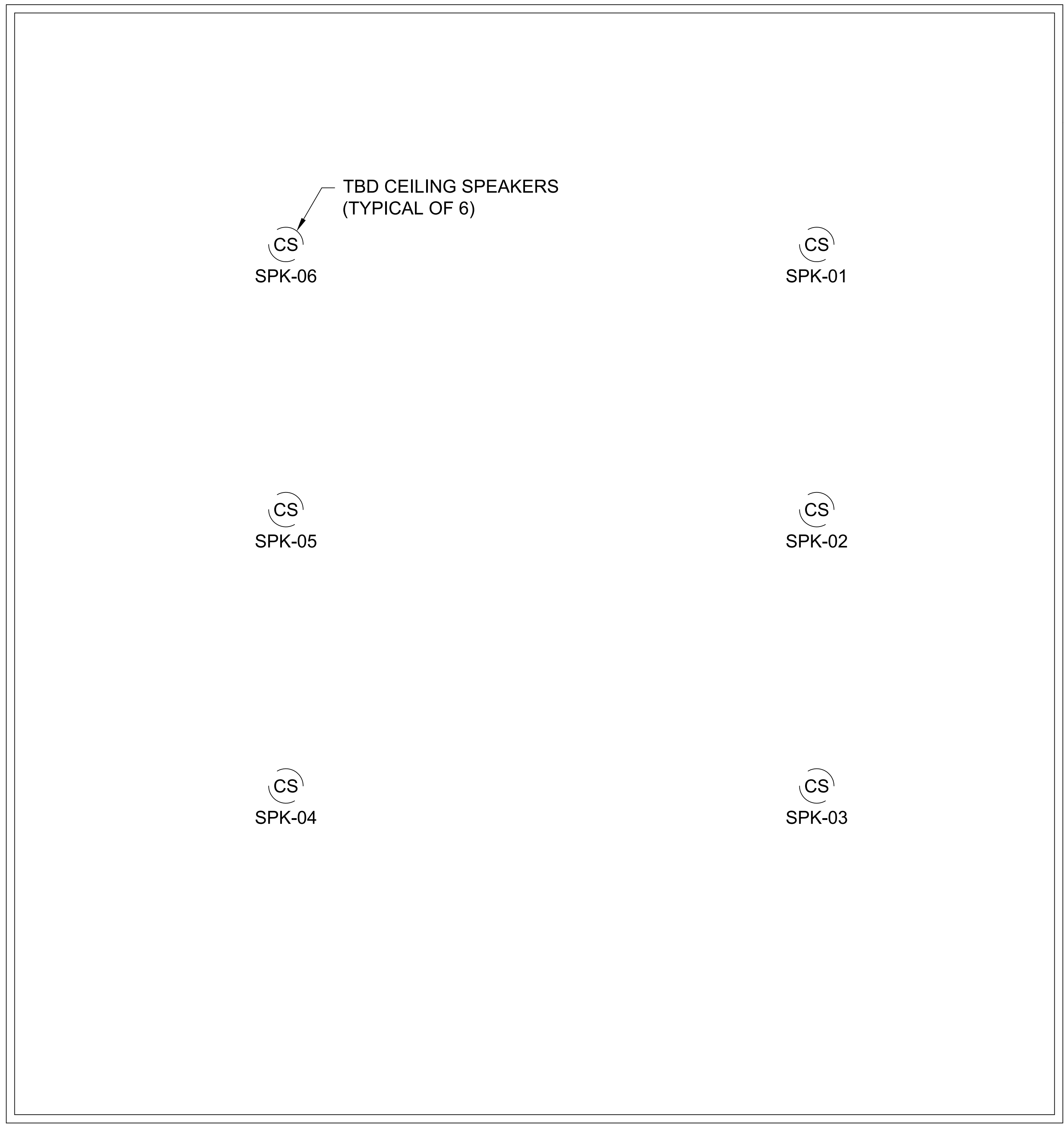
DRAWING #  
AV-202

AV FLOOR PLAN SYMBOL KEY

- DUPLEX WALL POWER OUTLET - FLUSH MOUNTED AT STANDARD RECEPTACLE HEIGHT, U.N.O. (BY OTHERS)
- QUAD WALL POWER OUTLET - FLUSH MOUNTED AT STANDARD RECEPTACLE HEIGHT, U.N.O. (BY OTHERS)
- SINGLE WALL POWER OUTLET - FLUSH MOUNTED AT STANDARD RECEPTACLE HEIGHT, U.N.O. (BY OTHERS)
- DUPLEX FLOOR POWER OUTLET - FLUSH WITH FINISHED FLOOR (BY OTHERS)
- QUAD FLOOR POWER OUTLET - FLUSH WITH FINISHED FLOOR (BY OTHERS)
- SPECIAL FLOOR POWER OUTLET - FLUSH WITH FINISHED FLOOR (BY OTHERS)
- WALL DATA OUTLET - FLUSH MOUNTED AT STANDARD RECEPTACLE HEIGHT, U.N.O. (BY OTHERS)
- WALL TELEPHONE & DATA OUTLET - FLUSH MOUNTED AT STANDARD RECEPTACLE HEIGHT, U.N.O. (BY OTHERS)
- WALL TELEPHONE OUTLET - FLUSH MOUNTED AT STANDARD RECEPTACLE HEIGHT, U.N.O. (BY OTHERS)
- FLOOR DATA OUTLET - FLUSH WITH FINISHED FLOOR (BY OTHERS)
- FLOOR TELEPHONE & DATA OUTLET - FLUSH WITH FINISHED FLOOR (BY OTHERS)
- FLOOR TELEPHONE OUTLET - FLUSH WITH FINISHED FLOOR (BY OTHERS)
- AV OUTLET - 2-GANG BOX FLUSH MOUNTED AT HEIGHT INDICATED ON PLANS, U.N.O.
- BUTTON PANEL - 2-GANG BOX FLUSH MOUNTED AT STANDARD SWITCH HEIGHT, U.N.O.
- CAMERA OUTLET - 2-GANG BOX FLUSH MOUNTED AT HEIGHT INDICATED ON PLANS, U.N.O.
- FLOOR BOX - AS SPECIFIED. FLUSH WITH FINISHED FLOOR.
- FLOOR CORE - BUILDING STANDARD FLOOR CORE.
- TOUCH PANEL - TOUCH PANEL AS SPECIFIED IN DRAWINGS FLUSH MOUNTED AT HEIGHT INDICATED ON PLANS. W/ (1) DATA DROP AS REQUIRED.
- VIDEO DISPLAY OUTLET - 2-GANG BOX FLUSH MOUNTED AT HEIGHT INDICATED ON PLANS, U.N.O.
- TABLE MOUNTED MICROPHONE - BLIND MOUNT DEVICE BY AV CONTRACTOR. SHOWN FOR COORDINATION ONLY.
- WALL PANEL - 3-GANG BOX FLUSH MOUNTED AT HEIGHT INDICATED ON PLANS, U.N.O.
- WALL MOUNTED LOUDSPEAKER - BLIND MOUNT DEVICE BY AV CONTRACTOR. SHOWN FOR COORDINATION ONLY.
- CABLE CUBBY - AS SPECIFIED. SEE PLANS FOR COMPONENTS.
- OUTLET FOR CABLE TV, U.N.O.
- ROOM SCHEDULER - 2-GANG RING OR BOX W/ (1) DATA DROP FLUSH MOUNTED AT HEIGHT INDICATED ON PLANS, U.N.O.

AV CEILING PLAN SYMBOL KEY

- DUPLEX CEILING POWER OUTLET - FLUSH WITH FINISHED CEILING, U.N.O. (BY OTHERS)
- QUAD CEILING POWER OUTLET - FLUSH WITH FINISHED CEILING, U.N.O. (BY OTHERS)
- SPECIAL CEILING POWER OUTLET - FLUSH WITH FINISHED CEILING, U.N.O. (BY OTHERS)
- CEILING DATA OUTLET - FLUSH WITH FINISHED CEILING, U.N.O. (BY OTHERS)
- CEILING TELEPHONE & DATA OUTLET - FLUSH WITH FINISHED CEILING, U.N.O. (BY OTHERS)
- CEILING TELEPHONE OUTLET - FLUSH WITH FINISHED CEILING, U.N.O. (BY OTHERS)
- CEILING VIDEO DISPLAY OUTLET - 2-GANG BOX FLUSH WITH FINISHED CEILING, U.N.O.
- VIDEO PROJECTOR OUTLET - 1-GANG BOX FLUSH WITH FINISHED CEILING, U.N.O.
- PROJECTOR SCREEN OUTLET - 2-GANG BOX MOUNTED ABOVE FINISHED CEILING, U.N.O.
- CEILING MICROPHONE - MICROPHONE AS SPECIFIED SUSPENDED/MOUNTED TO/FROM FINISHED CEILING.
- CEILING MOUNTED LOUDSPEAKER - BLIND MOUNT DEVICE BY AV CONTRACTOR. SHOWN FOR COORDINATION ONLY.
- OCCUPANCY SENSOR - AS SPECIFIED. PLACE NEAR CENTER OF ROOM, U.N.O.



1 MEETING ROOM – CEILING PLAN  
SCALE: NTS

REV.	DATE	BY
1		

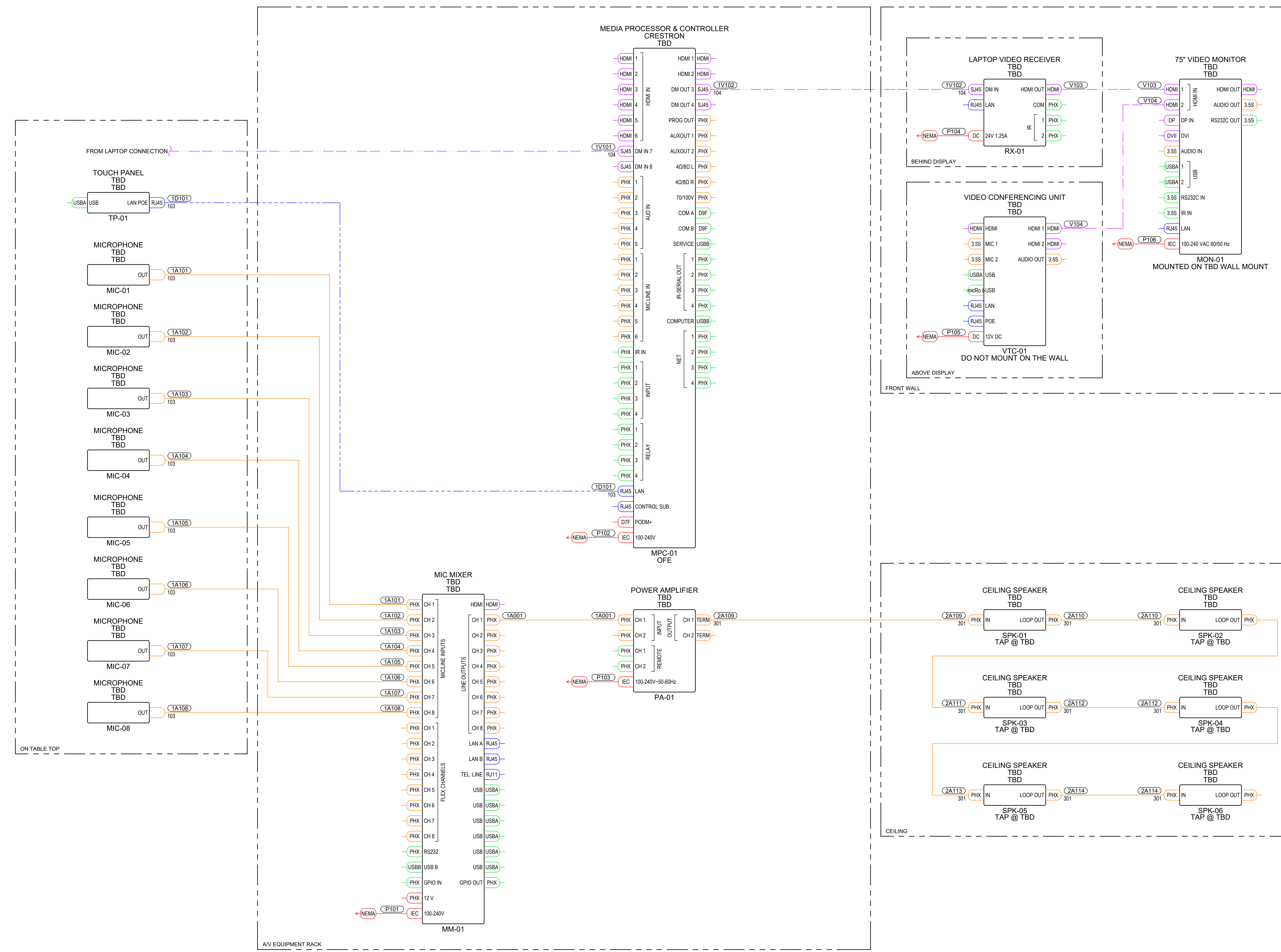


PROJECT: PILOT PROJECT MEETING ROOM  
DRAWING TITLE: MEETING ROOM A/V/C SINGLE LINE DIAGRAM

SCALE: NONE  
DATE: 2022/12/12  
DRAWN BY: KENNY  
CHECKED BY: DUSTIN

PROJECT NUMBER: PILOT PROJECT  
DRAWING #

AV-301



1 MEETING ROOM – A/V/C SINGLE LINE DIAGRAM  
SCALE: 1:1

FOR BUILD



