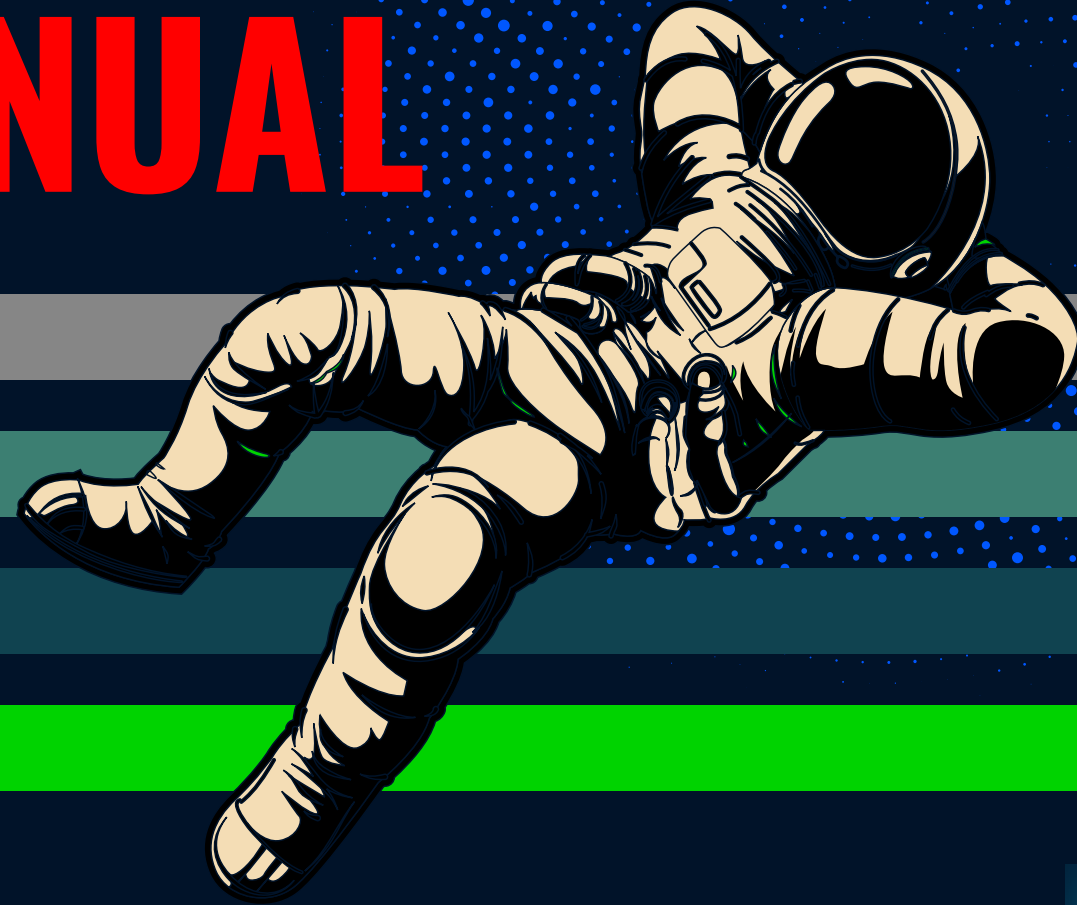


**MANUAL**



**INDICATOR**



# USER MANUAL & BASIC STRATEGY

---

Real time, Non lagging, Non-repainting, specialty software

Designed around smart-money trading concepts.

# IT ALL STARTS WITH **DEFINING VALUE**

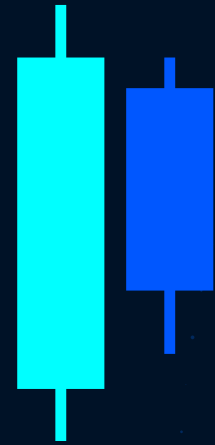
**VALUE** IS ALSO KNOWN AS THE **CONTRACTION PHASE**  
IT'S THE FUTURE TIPPING POINT  
BETWEEN BULL AND  
BEAR MARKETS.

VALUE IS CONFIRMED WHEN  
PRICE SETTLES INTO A  
RANGE BETWEEN A PREVIOUS  
HIGH AND LOW POINT.

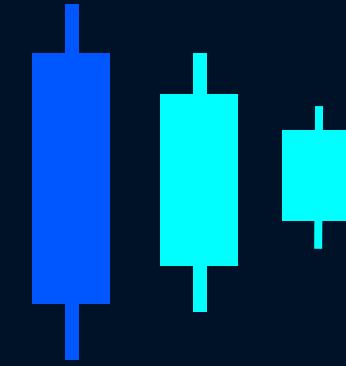


The value line shows the tipping point between overbought and oversold markets.

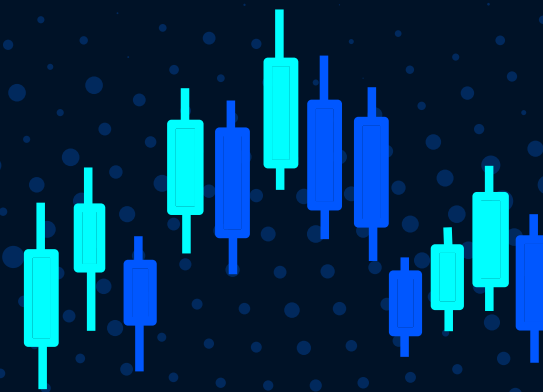
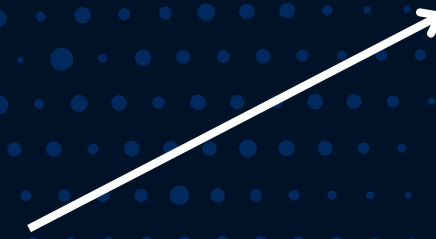
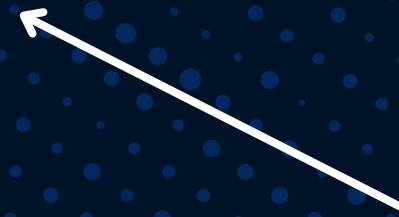
2 BAR CONTRACTION



3 BAR CONTRACTION



CONTRACTION  
LOGIC



MULTI-BAR CONTRACTION

# CONTRACTION OF PRICE

**The contraction phase** indicates a period when the market is in consolidation, marked by a tightening of the market with narrow ranges. This period is marked by low institutional volume. During this period, the institutional traders are working out the next move.

This is a leading volatility signal, it lets you know what's coming next.

There is a lot of sideways movement in this phase, and the range is confirmed to be getting smaller. It is also defined as higher lows and lower highs occurring simultaneously.

Understanding where the first phase starts is key to success using this type of technical analysis and the Master Pattern concepts.

A faint, semi-transparent candlestick chart is visible in the background of the slide, showing price movements over time. The chart is rendered in a light blue color against the dark blue background.

**Trade Stocks.  
Crypto.  
Gold. Forex.  
ANYTHING.**

Indicator X helps simplify trading for you.

**Bear market? Bull market?**

## WHAT IS INDICATOR X ?

Its an advanced institutional indicator hosted on TradingView that helps you understand the accumulation and distribution phases.

Large Institutions like Banks and Hedge Funds are the ones who really move markets. In order to trade the sizes they need to trade to make maximum profits, they have to move money in phases.

These phases are what is known as accumulation and distribution, Smart Money Concepts model. The Master Pattern Indicator helps you trade in alignment with this model and join the winning side of the market.

In simple terms, its more than an indicator. The Master Trader brand is about community, education, guidance, advice, and experience. Nobody makes it on their own. We know there are many trading tools out there, and your confidence and trust must be earned. We take that to heart.

## OUR GOAL IS TO MAKE TRADING EASIER FOR YOU.

By being able to identify clearly these 3 market phases you will be able to know exactly what phase the market is currently in, and you will know how to trade that phase accordingly, giving you a massive edge in understanding the market from an institutional stand point.

# INDICATOR COMPONENTS

**01** 2 BAR MASTER PATTERN  
Based on the single inside bar HL / LH contraction logic

---

**02** 3 BAR MASTER PATTERN  
Based on the double inside bar HL / LH contraction logic

---

**03** MULTI-BAR MASTER PATTERN  
Based on the multi-bar HL / LH contraction logic.

---

**04** HH / LL LIQUIDITY LINES  
Based on the multi-bar HL / LH contraction logic.



# THE EDGE

You have been looking for!



# CUSTOMIZED FEATURES

01

## 3 FORMS OF CONTRACTION LOGIC

3 levels of master pattern logic giving you precise contraction indications

02

## MULTI-TIME FRAME FUNCTIONALITY

All 3 types of master patterns now have a MTF functions

03

## VALUE LINE EXTENSION OPTIONS

Value lines have the option to fully extend to current price or extend until the next value lines

04

## MAX BARS BACK FUNCTIONALITY

All 3 types of master patterns have the option to select max bars back further or closer in time

05

## DETAILED SWING SIZE OPTIONS

The multi-bar master pattern has detailed options in choosing bigger or or smaller swing sizes

06

## DETAILED HH / LL LIQUIDITY PREDICTIONS

You can turn on and off the liquidity lines and select the HH / LL options with smaller or bigger swing sizes.

07

## POINT OF ORIGIN MASTER PATTERN

The multi-bar master pattern option now has the ability to mark out a confirmed origin box .



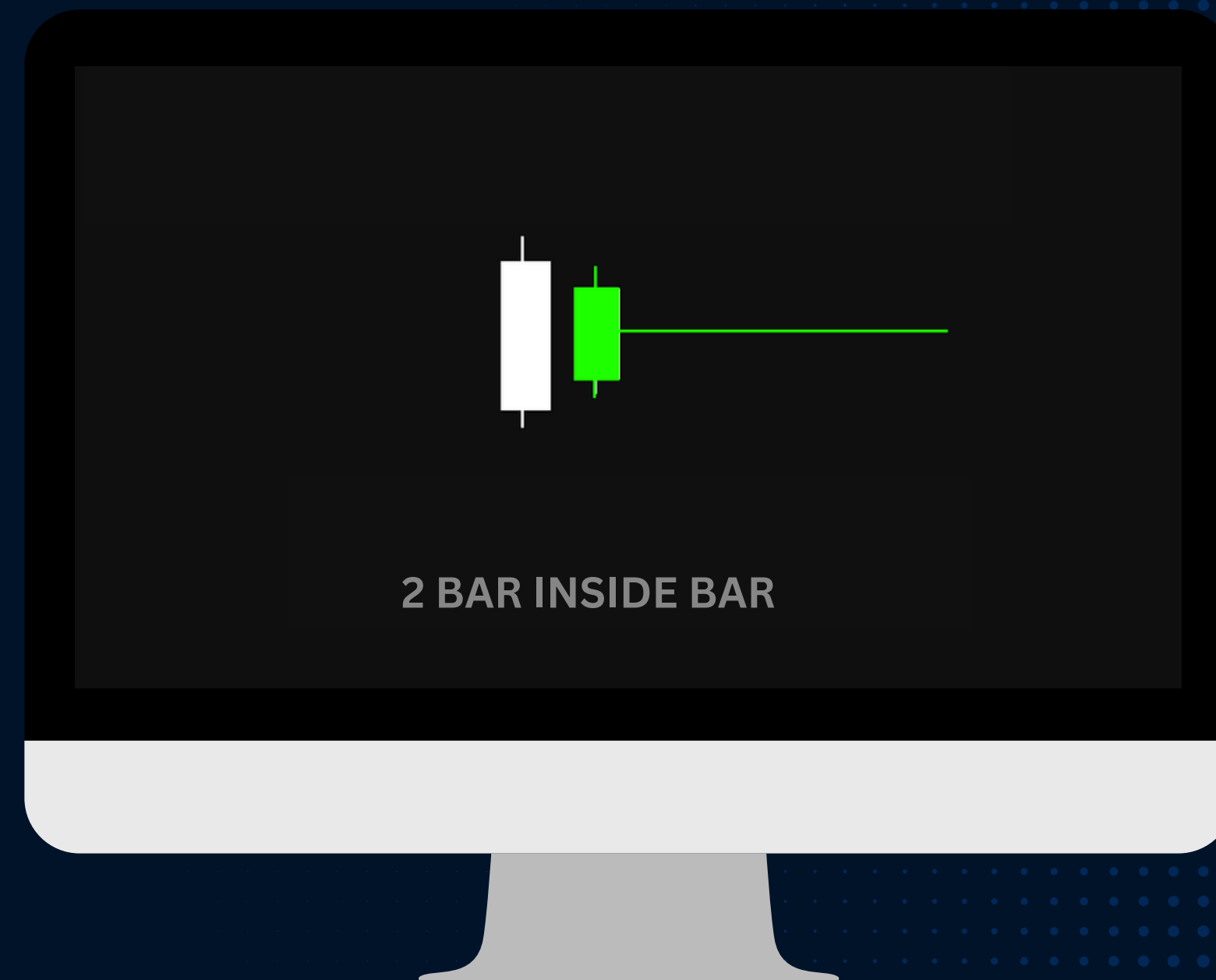
# 2 BAR MASTER PATTERN

The **2 Bar Master Pattern Indicator** finds 2 bar contraction zones on any timeframe of choice.

These levels represent weakness or strength in structure of price action and lets us know that a possible shift in trend or break in structure is about to happen.

The higher the timeframe you are on, the more confident and bigger the break that will happen.

It can be used in 2 ways, as a continuation trading or reversal trading.



# 2 BAR MASTER PATTERN

Multi-timeframe 2 bar contraction logic - Highlights bar and extends a line through its centre.



#1 - Extends line to new 2 bar pattern



#2 - Extends line to current price

# 2 BAR MASTER PATTERN



# INPUTS

OPTION 1

2 BAR MASTER PATTERN

Timeframe

Line Extend Option

Inside Bar Color

Line Color

Line Style

Line Thickness

Show Line

Max Bars Back

# 3 BAR MASTER PATTERN

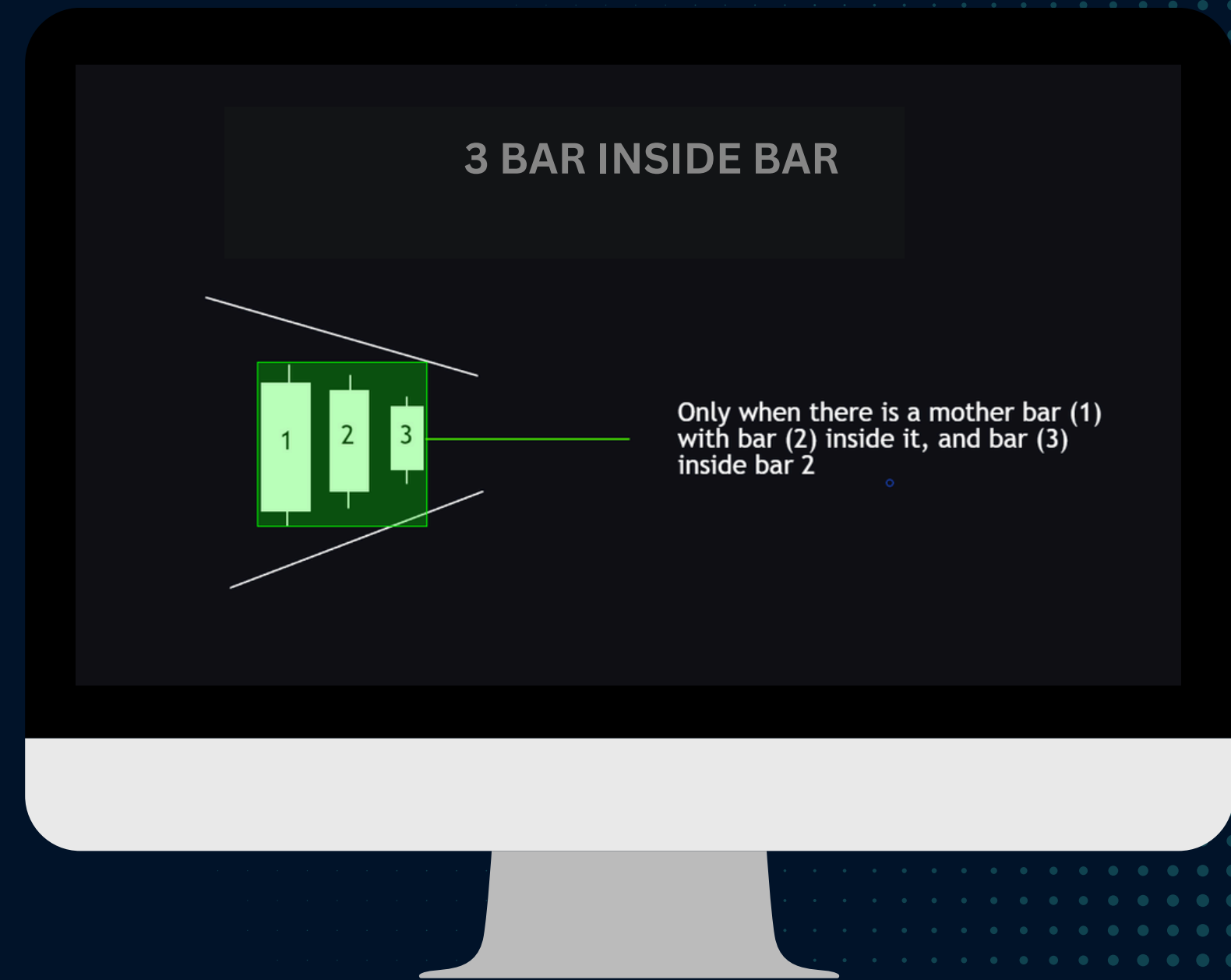
The **3 Bar Master Pattern** finds 3 bar contraction zones on any timeframe of choice.

3 Bar contraction show more likeliness of a break in structure or possible trend reversal all depending on the current trend conditions.

The higher the timeframe you are on, the more confident and bigger the break that will happen.

It can be used in 2 ways, as a continuation trading or reversal trading.

These also become strong support and resistance levels that price respects over time.



# 3 BAR MASTER PATTERN

Multi-timeframe 3 bar contraction logic detection - Draws a box and extends a line through its centre.



#1 - Extends line to new 1 bar inside bar



#2 - Extends line to current price

# 3 BAR MASTER PATTERN



# INPUTS

3 BAR MASTER PATTERN

Timeframe

Chart



Line Extend Option

Extend t...



Box Color



Line Color



Line Style

Solid



Line Thickness

2

Max Bars Back

1000

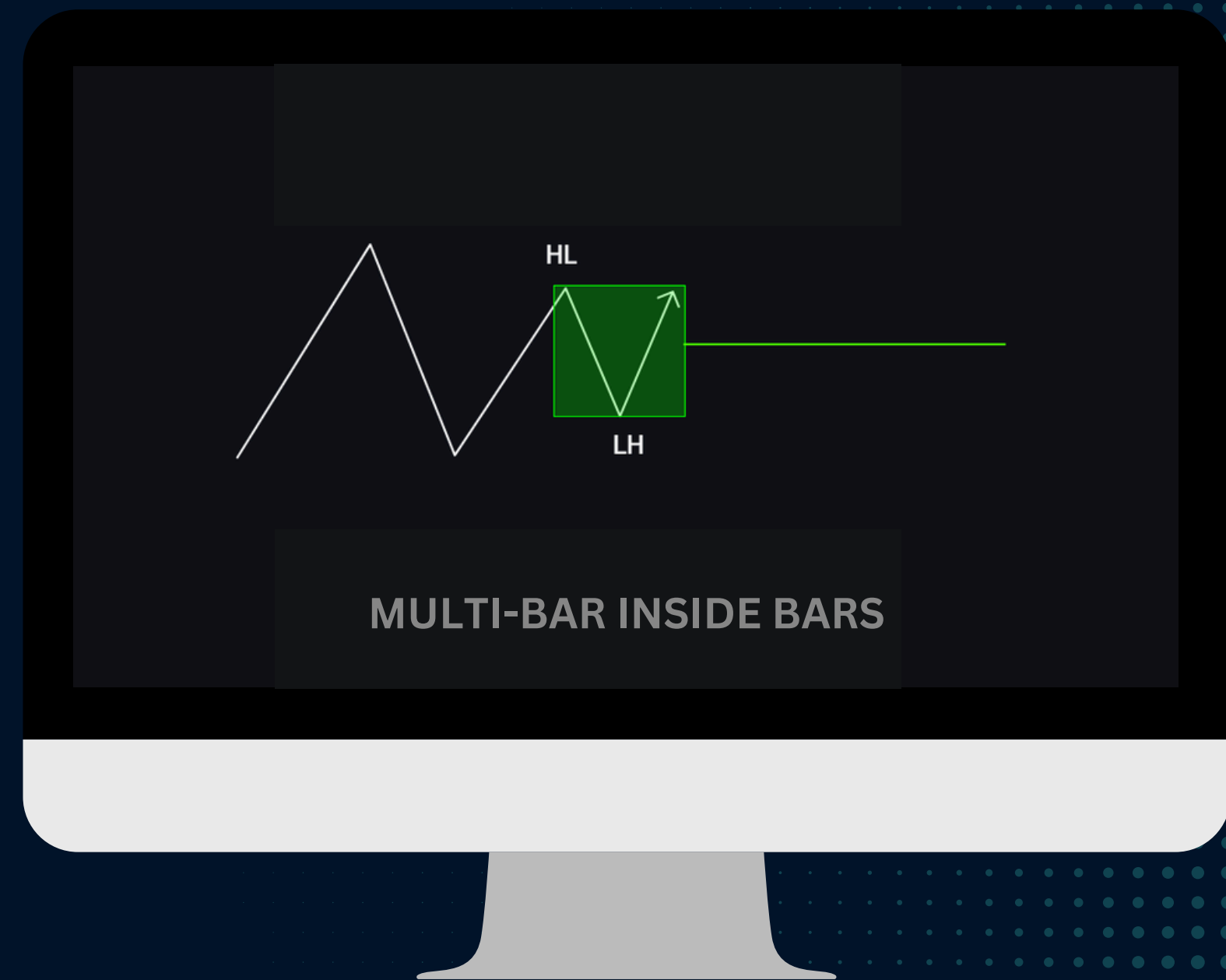
# MULTI-BAR MASTER PATTERN

The **Multi-Bar Master Pattern** finds multi-bar LH / HL contraction zones on any timeframe of choice.

These levels represent low institutional volume happening in the market, and shows the start of a market cycle. It is the definitive marker that the 1st phase in the market is starting.

This is a leading indication and shows you exactly what will happen next.

The value lines that are created from this indication are extremely price sensitive and reveals the behaviour of the market.

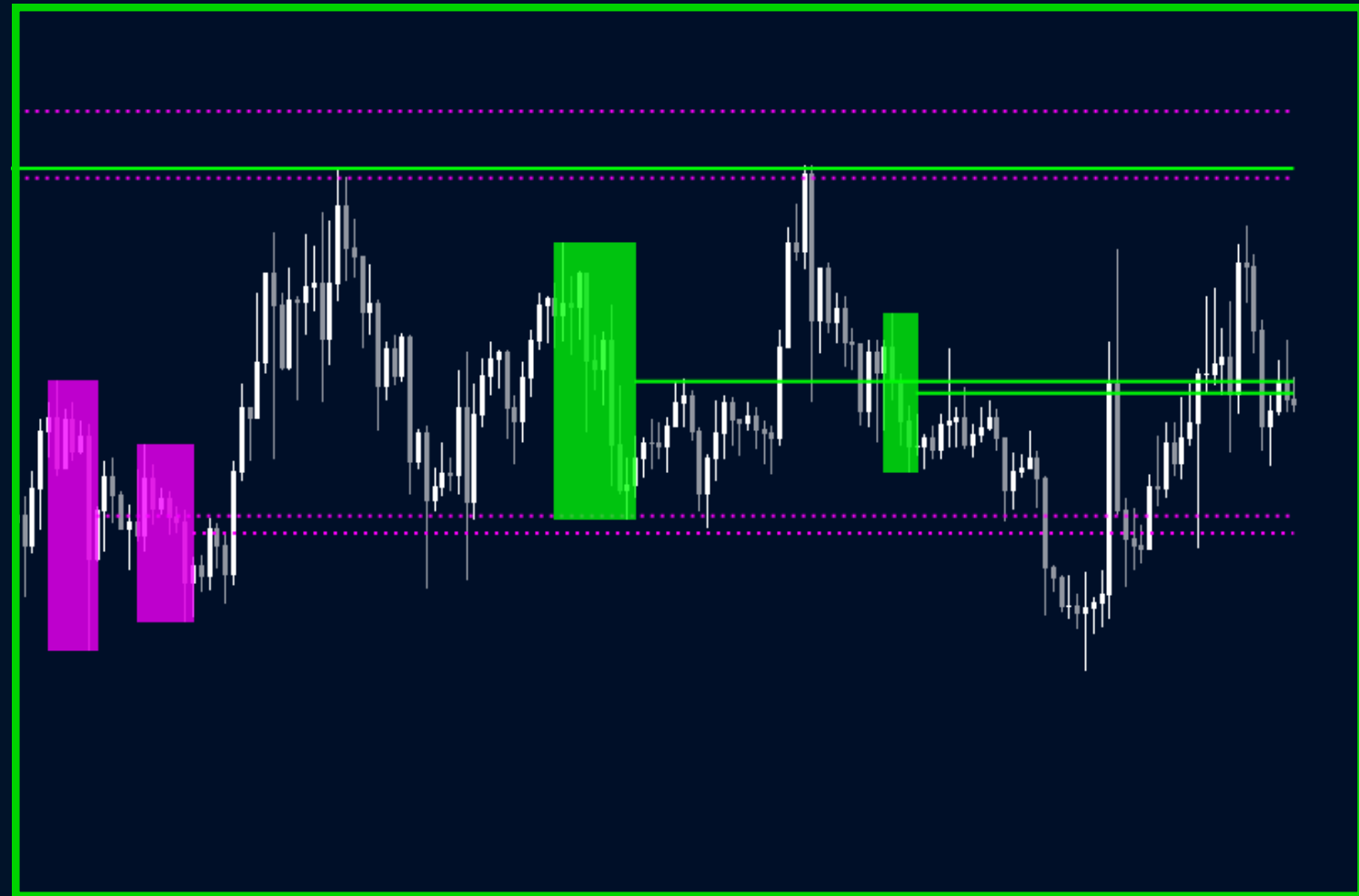


# MULTI BAR MASTER PATTERN

Multi-timeframe HL / LH detection - Draws a box and extends a line through its centre.



#1 - Extends line to new 1 bar inside bar



#2 - Extends line to current price

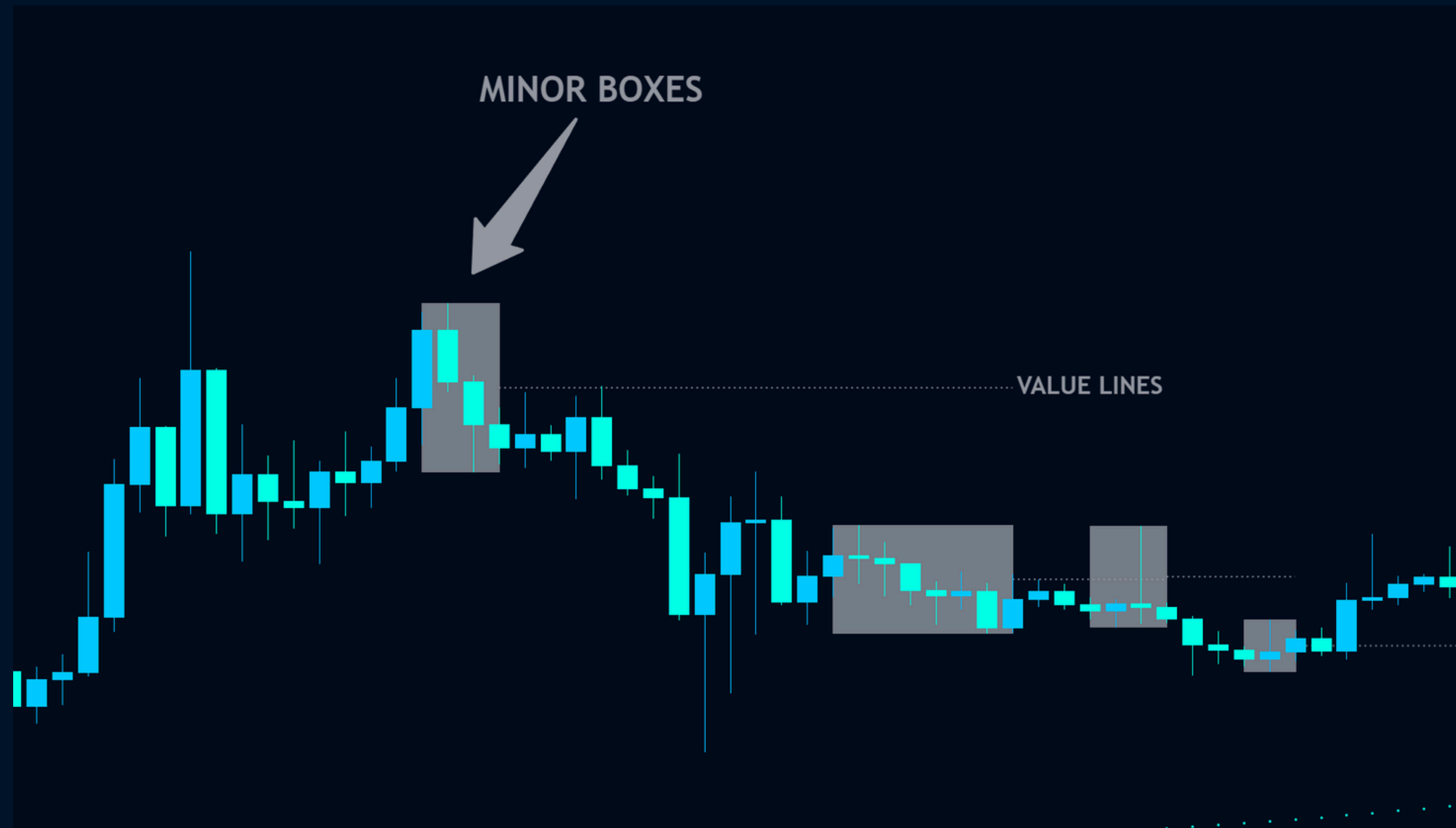
Defines Major & Minor & Origin Master Patterns through intelligent logic

# MULTI BAR MASTER PATTERN



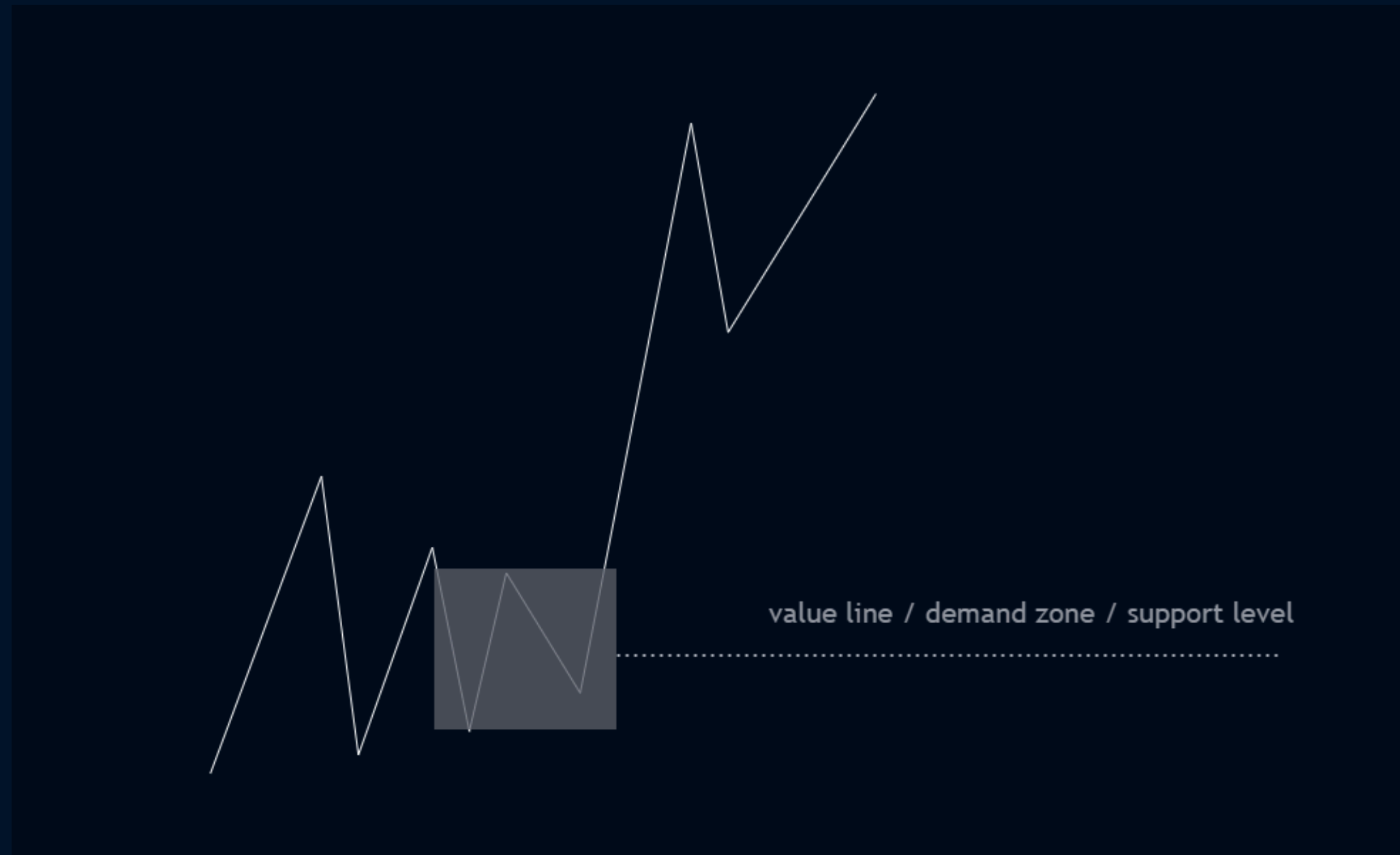
**3 Boxes** that tell a story about the markets behaviour.

# 1) MINOR BOXES



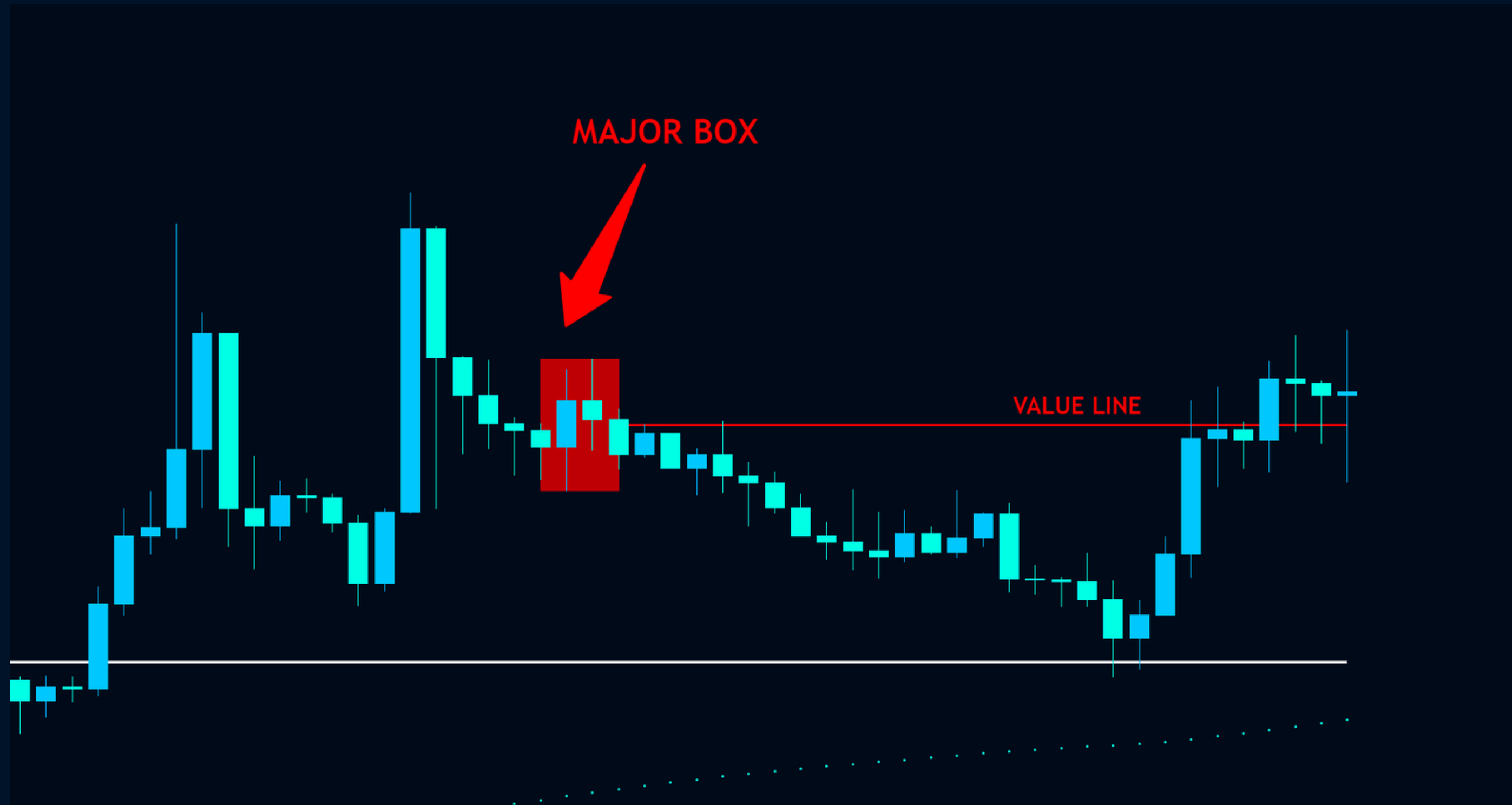
Minor boxes happen when price breaks out to only 1 side of the box, this represents a magnetic level and price usually moves away or towards it

## LH / HL + A BREAK TO ONLY 1 SIDE OF THE BOX



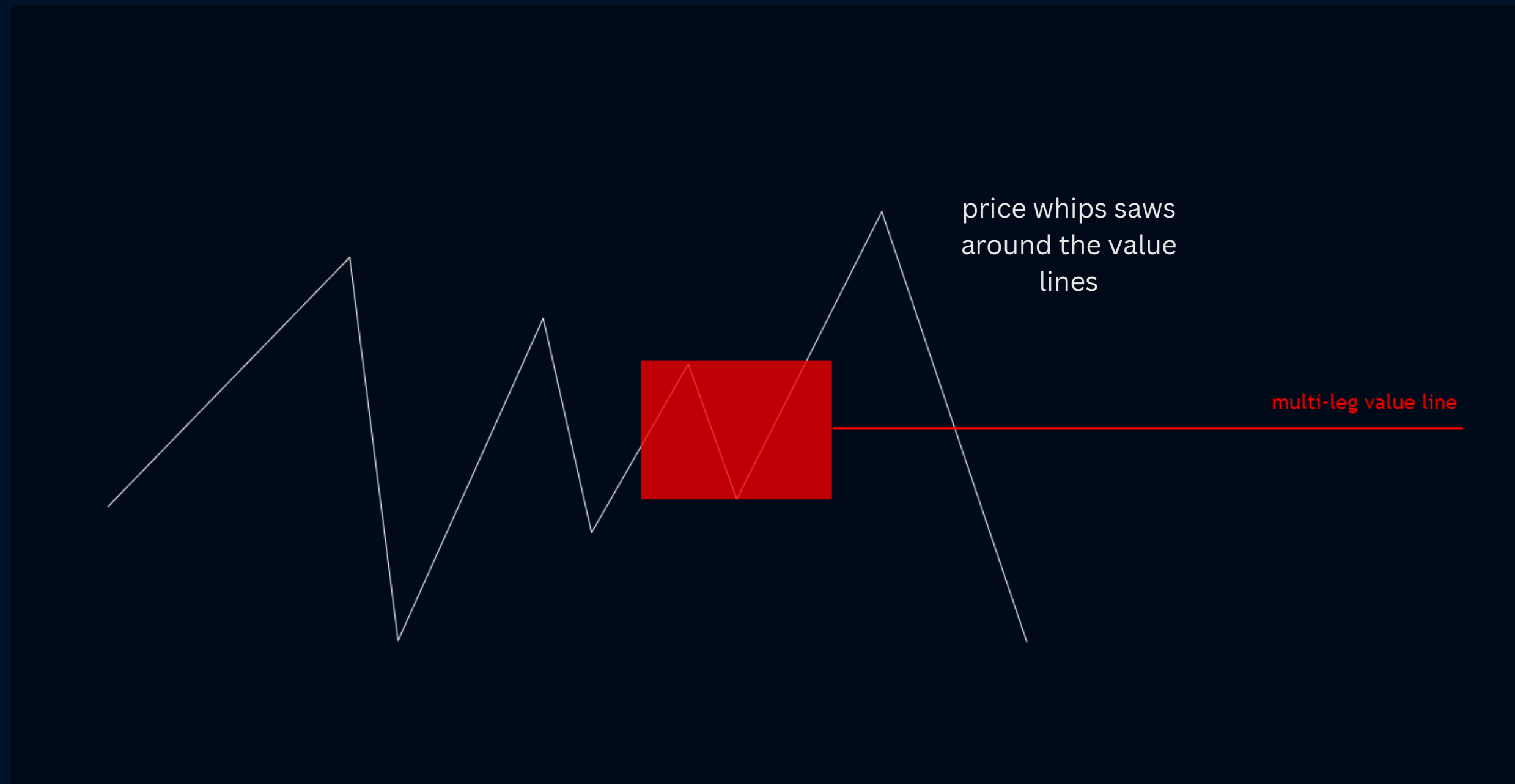
**MINOR BOXES** act as nakedPOC, prices likes tome come back to them at some point in the future.

## 2) MAJOR BOXES



**MAJOR BOXES** Confirm a significant level where the market makers 0 point balance thier books, its the zero point of beliefs within the markets.

## LH / HL + A BREAK TO ONLY 2 SIDE OF THE BOX



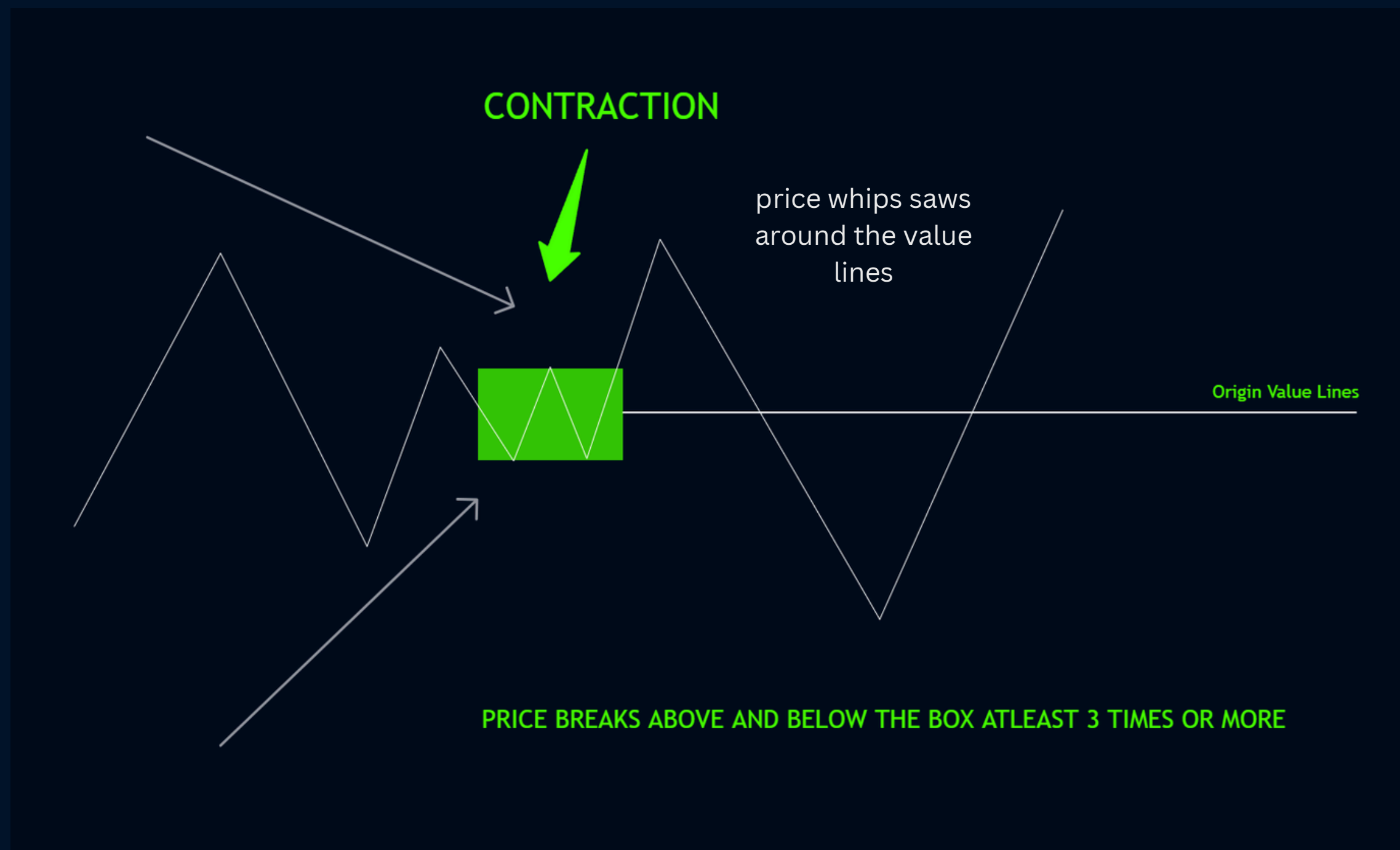
**MAJOR BOXES** give you a structure to base your entries and exits off of.

### 3) ORIGIN BOXES



**ORIGIN BOXES** reveal the start of the 3 phase Cycle. Price expands out the box and whip saws in the 2nd phase of expansion around the value lines multiple times before it enters into the 3rd phase.

# LH / HL + A BREAK TO 3 OR MORE SIDES OF THE BOX



**ORIGIN BOXES** reveal areas that are confirmed as strong key levels.

# INPUTS

OPTION 3

MULTI BAR MASTER PATTERN

Timeframe

Line Extend Option

Minor Master Pattern

Box Color

Line Color

Minor Line Style

Minor Line Thickness

Major Master Pattern

Box Color

Line Color

Major Line Style

Major Line Thickness

Origin Master Pattern

Box Color

Line Color

Line Style

Origin Line Thickness

Max Bars Back

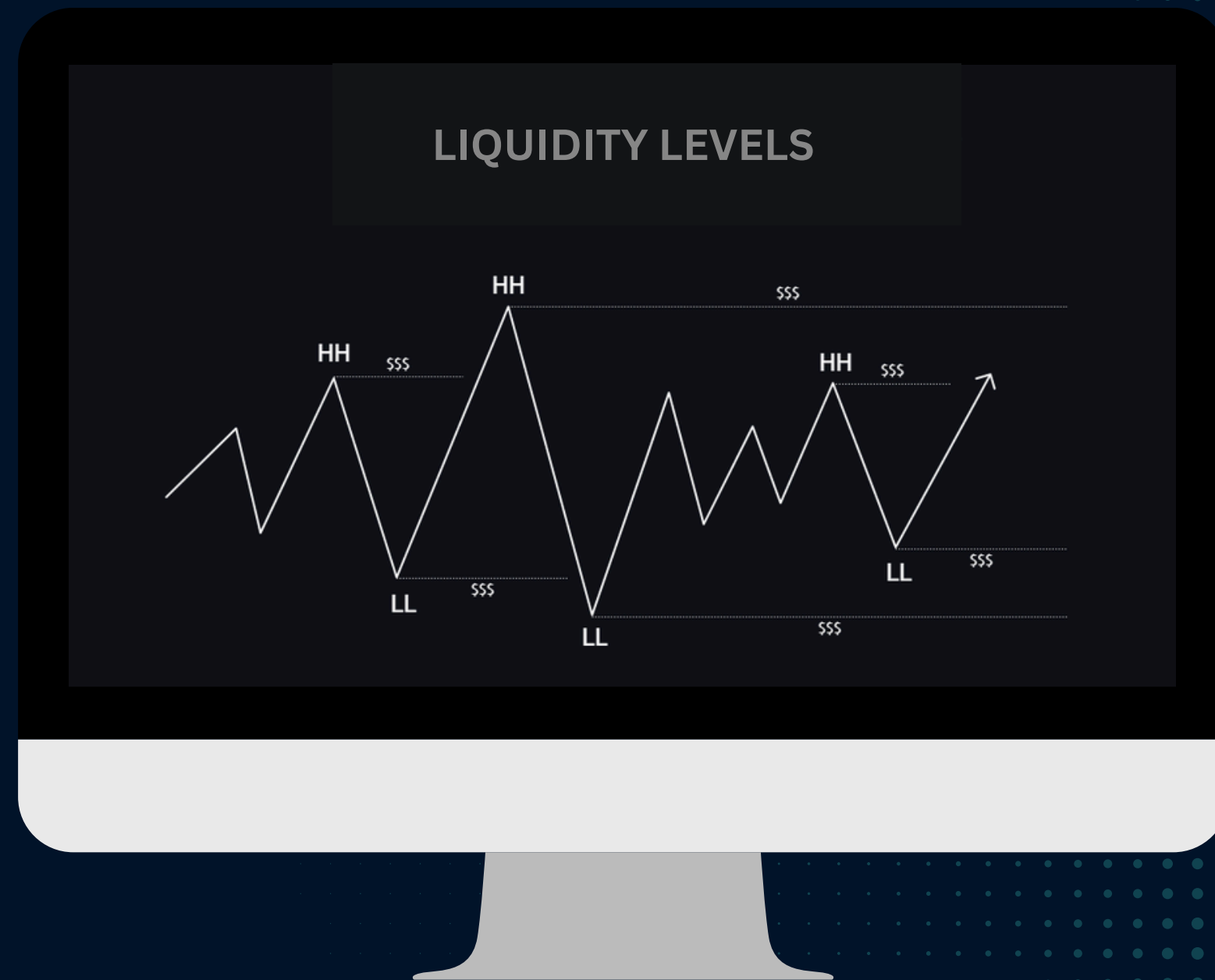
# LIQUIDITY LEVELS

**Liquidity levels** represent where other traders place their stop losses. These become excellent places to enter or exit trades as you have a clear knowing of resting liquidity pools in these locations.

Understanding the exact spot where other traders will make a mistake in the market is very advantageous knowledge for every trader.

Our indicator software detects LL and HH points on the chart and show you clearly these exact locations.

This makes for a complete strategy on its own, and when combined with the other indicator tools adds for a powerhouse trading combo.



# HH / LL LIQUIDITY LEVELS



Multi-level HH / LL detection logic - Draws liquidity lines until they get touched

# THINK OF LIQUIDITY LINES

AS A **MAP** TO BASE YOUR ENTRY AND EXIT STRATEGY

# LIQUIDITY INPUTS

LIQUIDITY LINES

LIQUIDITY LEVELS

Line Style Dotted ▼


Line Thickness 1

LIQUIDITY SWING SIZE

HH 5

LL 5

Change the size of the swings  
smaller for scalps and bigger  
for swings

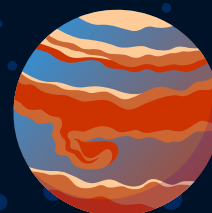
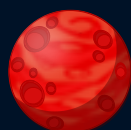
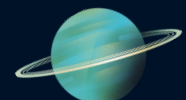


Gravity-Free  
**Trading**



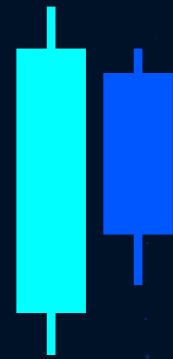
# KEY COMPONENTS

- 1) CONTRACTION
- 2) EXPANSION
- 3) LIQUIDITY

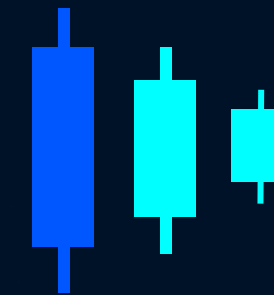


# #3 TYPES OF CONTRACTION

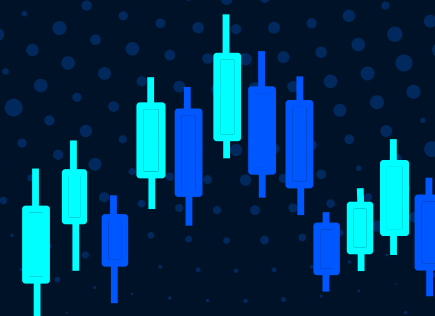
2 BAR CONTRACTION



3 BAR CONTRACTION

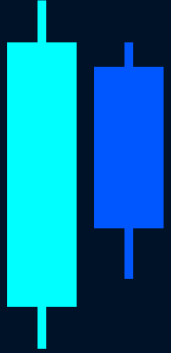


CONTRACTION  
LOGIC



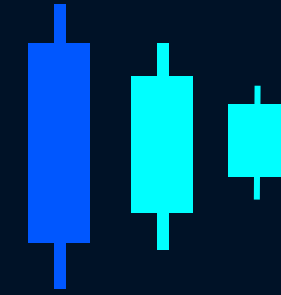
MULTI-BAR CONTRACTION

# 2 BAR CONTRACTION



2 BAR INSIDE BARS SHOW THE FIRST STAGE OF CONTRACTION, WHERE PRICE IS CONTRACTS. THE 2 BAR IS MORE VALID ON HIGHER TIME FRAMES

# 3 BAR CONTRACTION

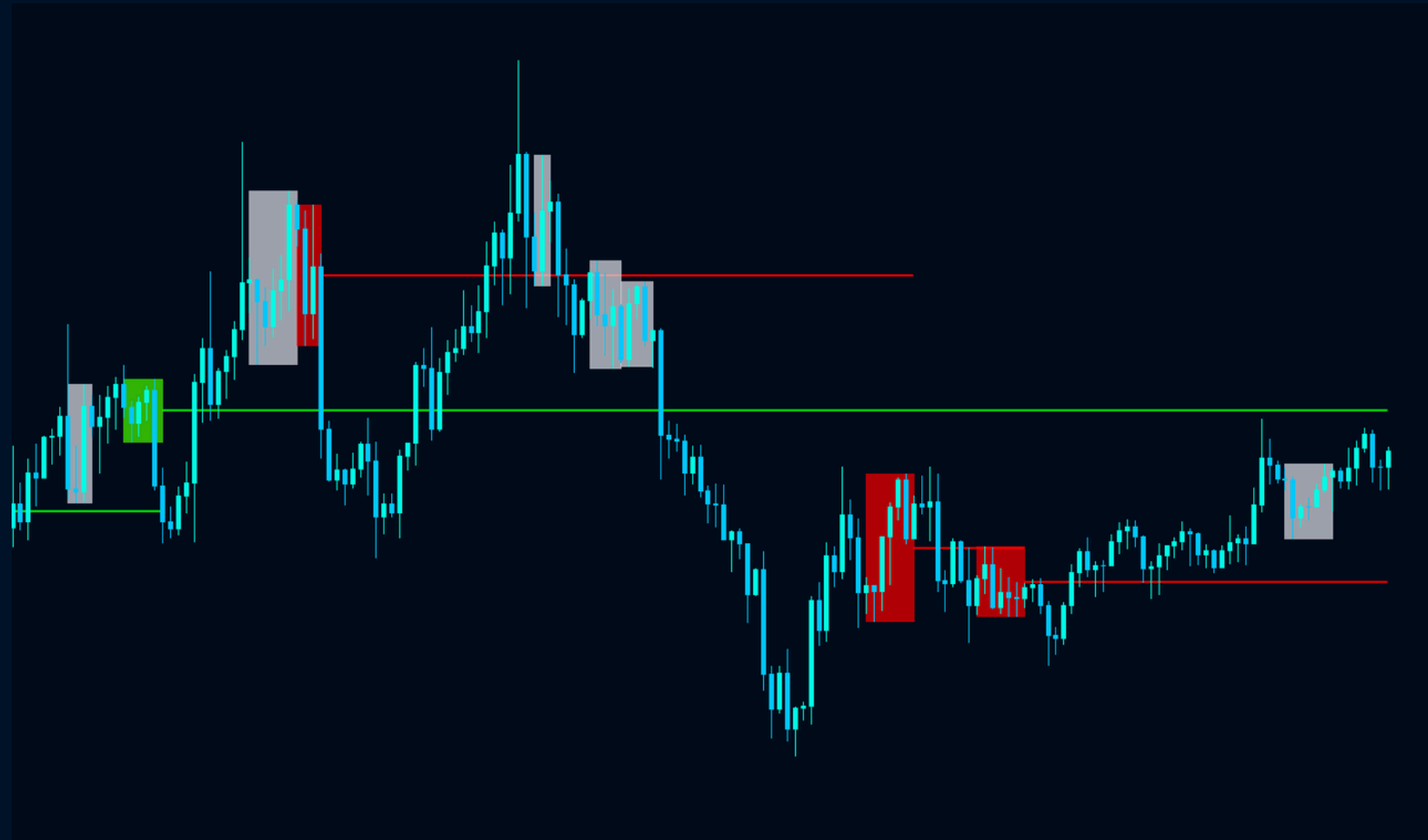
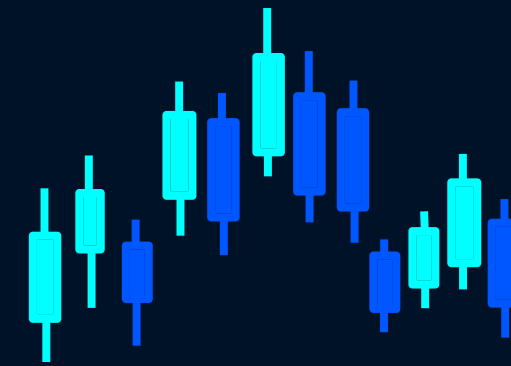


DAILY INSIDE BAR

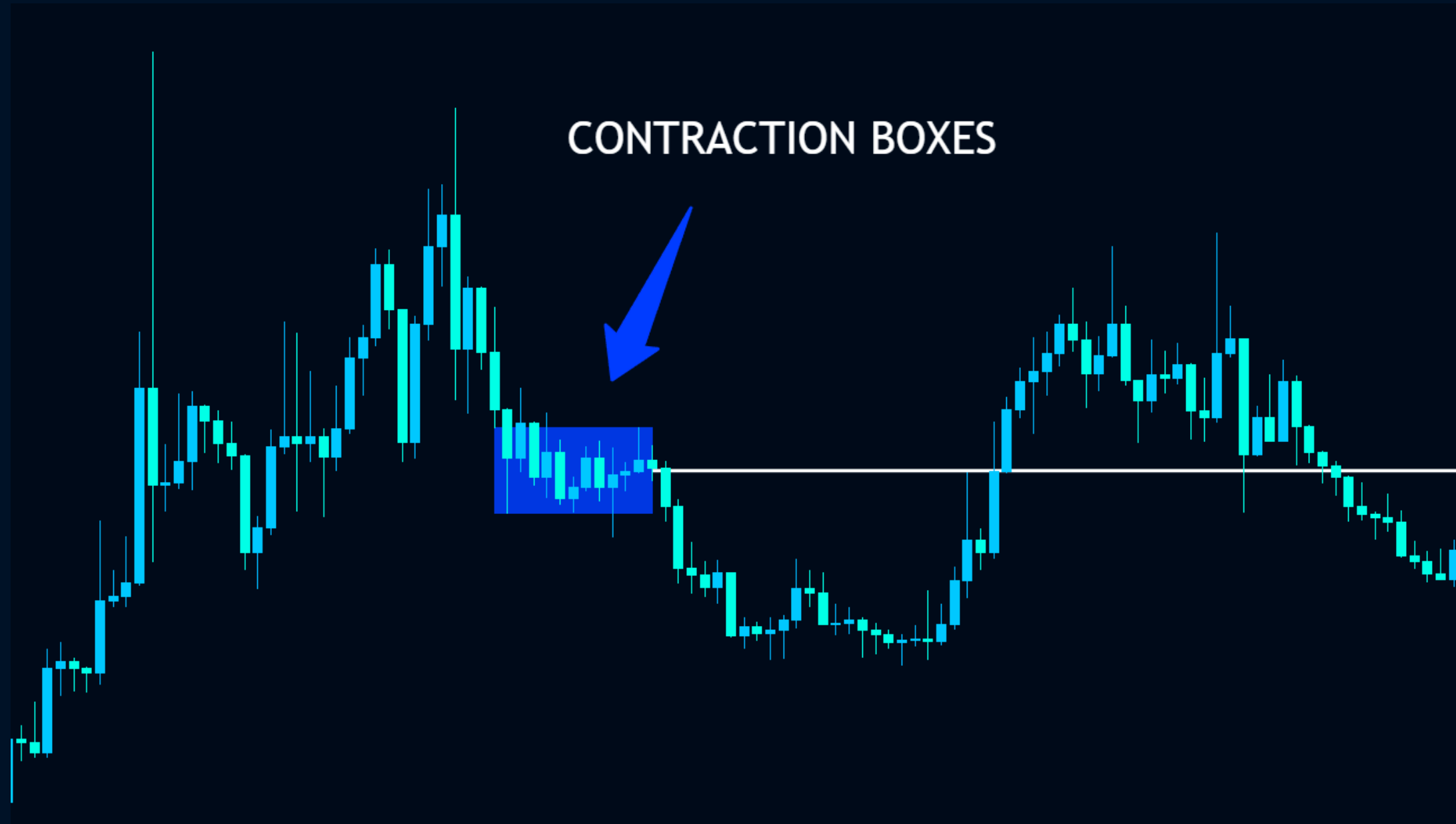
HIGHER TIME FRAME INSIDE BARS

3 BAR INSIDE BARS SHOW A DEEPER LEVEL OF CONTRACTION, AS ITS A DOUBLE INSIDE BAR, THIS SHOWS A KEY TRADING LEVEL WHERE PRICE RESPECTS

# MULTI-BAR CONTRACTION



MULTI BAR CONTRACTION IS BASED OFF OF HL / LH SWINGS BY COMBINING MULTI CANDLE BARS TO CALCULATE THE LOGIC



CONTRACTION BOXES SHOW YOU WHEN THE MARKET ENTERS INTO THE NEUTRAL PHASE  
THIS IS A LEADING SIGNALS BECAUSE IT LETS YOU KNOW WHATS COMING NEXT

# EXPANSION



EXPANSION LINES SIGNAL THAT THE MARKET IS NOW OPENING UP, NEW TREND IS ALMOST READY AND POSSIBLE MARKET MANIPULATION HAS HAPPENED

# LIQUIDITY



IDENTIFIES AN IDEAL SITUATION WHERE RETAIL TRADERS ARE ENTERING OR EXITING THE MARKET, IT ALSO REVEALS THE POSSIBLE AREAS WHERE MASS STOP LOSSES ARE LOCATED.



*Based on the*

# MASTER PATTERN CONCEPTS METHODOLOGY



THE **3 PHASES** IN THE MARKET

# UNDERSTANDING MARKET PHASES

1

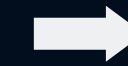
2

3

**CONTRACTION**



**EXPANSION**



**TREND**

**CONTRACTION IS A TIGHTENING OF PRICE**

**EXPANSION IS A WIDENING OF PRICE**

**TREND IS THE MOVE TO HIGHER OR LOWER PRICES**

# LETS DIVE DEEPER INTO THE **3 PHASES**

**1 - Contraction Phase ( The Setup )** - Caused by low institutional volume. The range has confirmed its getting smaller mostly sideways movement.

**2 - Expansion Phase ( The Play )** - Increasing institutional volume. The range starts opening up, taking out lows and highs. Smart money accumulates positions at discounted prices.

**3 - Trend Phase( The Pay-out Cycle )** - Institutional traders start taking profits. The market makes it move to higher or lower prices. Institutional traders use FOMO inspired liquidity to exit their previously accumulated positions. This is where most retail traders make temporary profits.

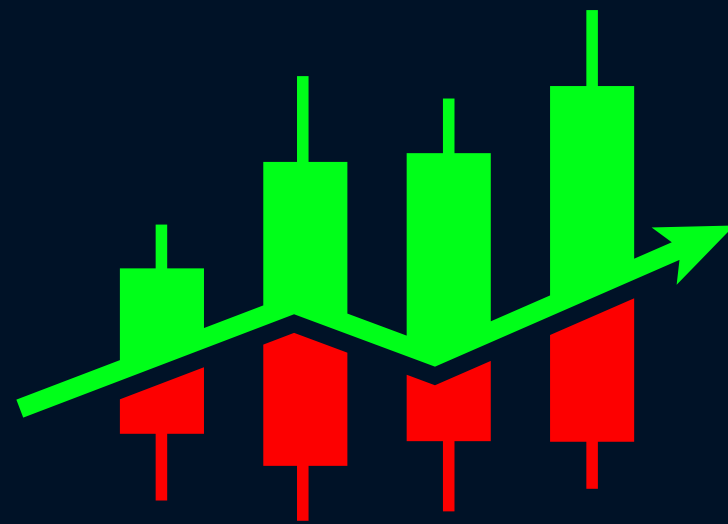
# THE MOST CONSISTENT FORM OF TECHNICAL ANALYSIS

This pattern shows you how to break down the seemingly randomness of the market and classify each movement into a defined phase.

The correct mapping of this pattern will help you understand the market from the institutional perspective.

This pattern is the footprint left behind by the banks activity and how they do business.

**WORKS ON EVERY TIME FRAME AND EVERY FINANCIAL MARKET**



THE **SECRET** TO WINNING IN THE MARKETS IS TO  
EMULATE THE BANKS TRADING STRATEGY

# HOW TO DO THIS?

By understanding market contraction.

# 01

## 2 BAR MASTER PATTERN

Based on the single inside bar HL / LH contraction logic



The **inside bar** is a two-candlestick pattern that signals trend continuation or reversal.

The concept behind the inside bar pattern is that there is a temporary consolidation when the inside bars are formed or a decline in buying or selling pressure in the market following a large and significant price movement.

The inside bar setup appears on both sides of the market – meaning, when the pattern appears in an uptrend, it's called a bullish inside bar pattern, while when it appears in a downtrend, it is called a bearish inside bar pattern.

This pattern could be either a trend reversal or continuation chart pattern, depending on the context of the markets. It is also one of the most frequently seen patterns that appear regularly in any market condition.

Its best used only on the higher time frames to filter out all the noise.

# HOW TO TRADE IT

You can apply a variety of trading strategies when trading inside bars. As mentioned, the inside bar candle pattern can appear in a downtrend or an uptrend and indicate a reversal

You cannot trade every single inside bar the same, as you may not know if the trend will reverse or continue. Instead, it would be best to interpret the pattern differently on the market context and decide the next price direction. The inside bar allows you to identify a pause in price action and a good market entry level before the next price movement.

**That's what this pattern is all about.**

Inside bars can be traded in trending markets in the direction of the trend, when traded this way they are typically referred to as a 'breakout play' or an inside bar price action breakout pattern. They can also be traded counter-trend, typically from key chart levels, when traded this way they are often referred to as inside bar reversals.

A good solution is to apply an indicator or a tool that works well with the inside bar. For that matter, you can use support and resistance levels, moving averages, and the multi-bar master pattern among some of them.

# 1) TREND TRADING

The first way to trade the inside bar pattern is in a **trending market**.



When price is in a confirmed uptrend / downtrend you can **buy or sell** using these inside bar value lines as a barometre for entries.

Example of a **trending market** using the **multiple time frame** function.



Price is above the moving average, then price breaks above the DAILY value line showing a **continuation in trend** entry

# 1) REVERSAL TRADING

Another way to trade **inside bars** is at key levels such as support and resistance / supply and demand zone

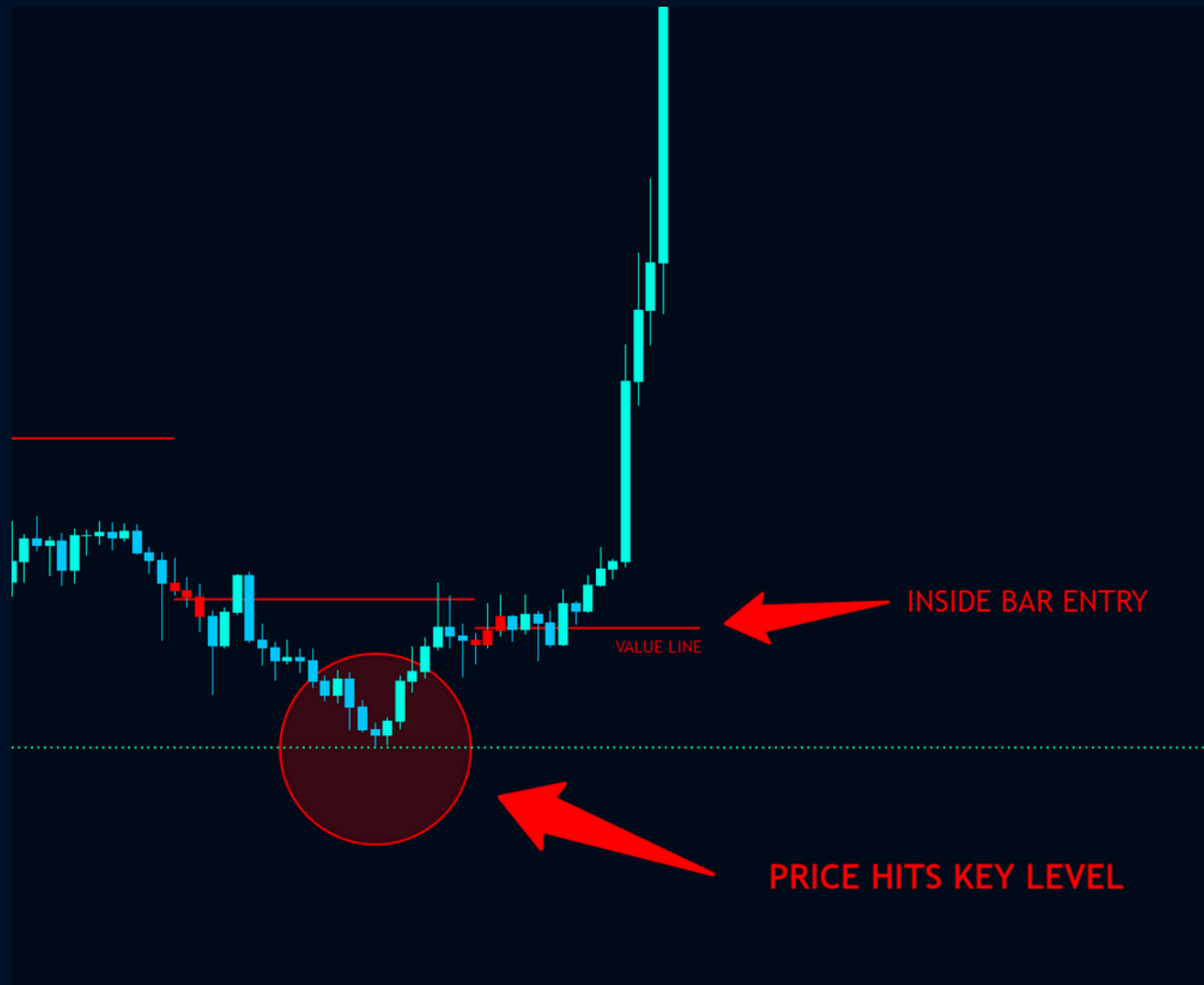


Wait for price to come to **KEY LEVELS** and look to trade reversal setups



when price rejects a key level then look for a higher time frame inside bar

look for reversal entries at **key levels**



Price comes to a key support level then we wait for a HTF inside bar for entry

# DIVERGENCE INSIDE BARS



When price creates a divergence with the TDI or RSI you can look for inside bars to enter into the reversal trade.

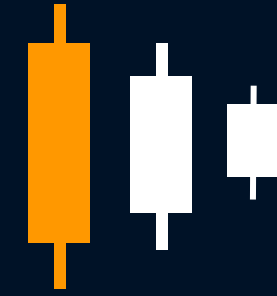
# DIVERGENCE INSIDE BARS



# 02

## 3 BAR MASTER PATTERN

Based on a double inside bar HL / LH contraction logic



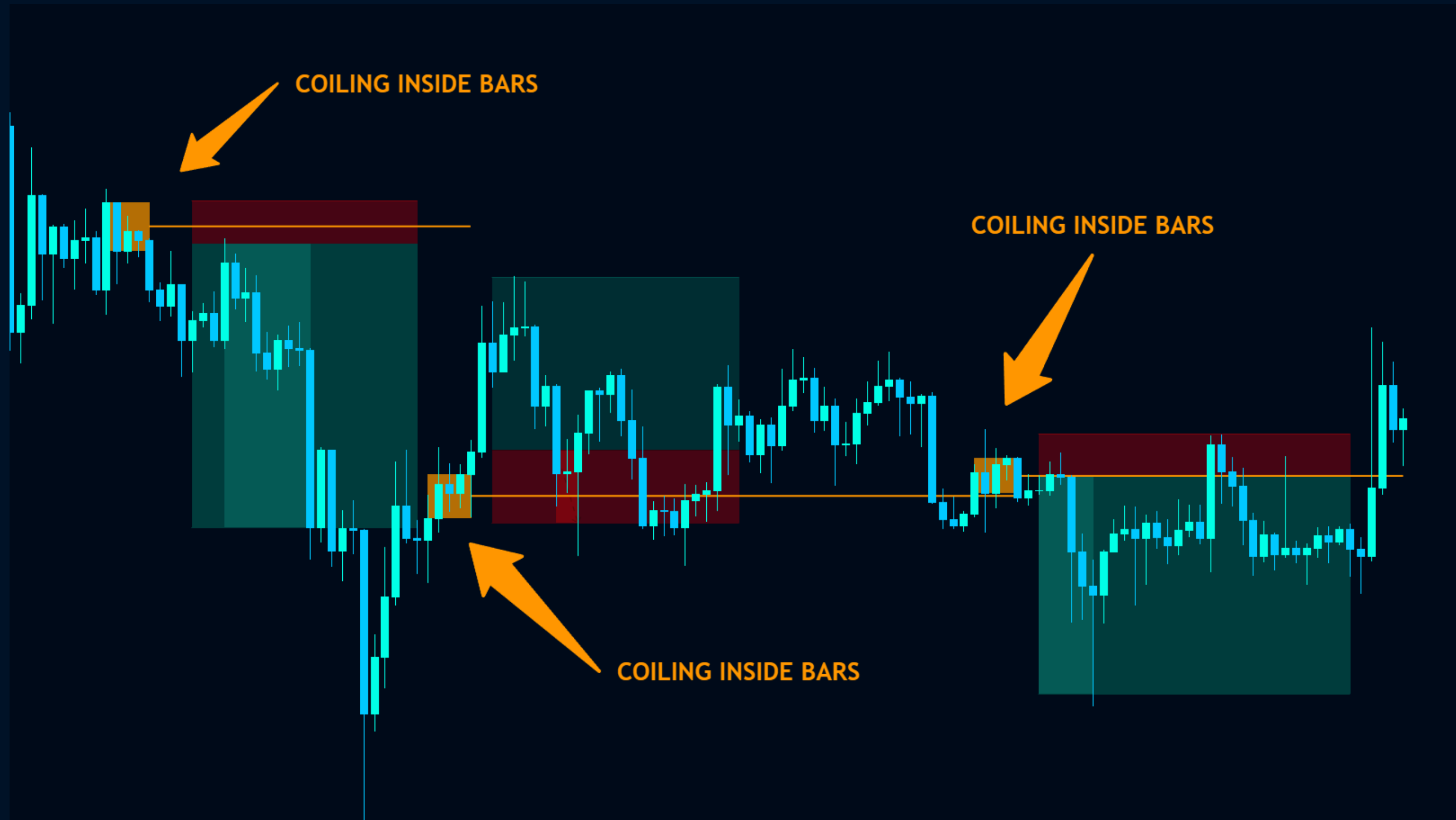
The **3 Bar Inside Bar** or “double inside bar” which consists of coiling inside bar patterns , this is where price is “**coiling**” up tighter and tighter like a spring, within one another.

Pay special attention when you see these because they mean the market is contracting and just like a spring wound up tighter and tighter, eventually it’s going to “release” and explode into a powerful move (in many cases).

This shows a very low volume areas and these become key trading levels, where the market makers balance their books, and usually strong volatility comes after.

These levels become like a “ line in the sand “ and that represents the balance between the buyers and sellers in the current market.

The **3 Bar Inside Bar** acts like a strong barometre and when price breaks below it or above it it usually breaks out with strong volume movements.



# HOW TO TRADE IT

You can apply a variety of trading strategies when trading the 3 bar inside bar. The value line created from the this inside bar pattern can be used as key showing the movement of price.

This inside bar pattern allows you to identify a strong contraction in price action, it acts as a leading volatility signal. It can be traded in the same way as the master pattern concepts.

It can be traded in trending markets in the direction of the trend, when traded this way they are typically referred to as a 'breakout play' or an inside bar price action breakout pattern. They can also be traded counter-trend, typically from key chart levels, when traded this way they are often referred to as inside bar reversals.

For extra confluence you can trade this pattern with other indicators such as support and resistance levels, moving averages, and the multi-bar master pattern are among some of them.

# TRADING WITH THE TREND



When price is in a confirmed uptrend / downtrend you can **buy or sell** using the 3 bar value lines as a barometre for entries.

# LINE IN THE SAND LONG / SHORT



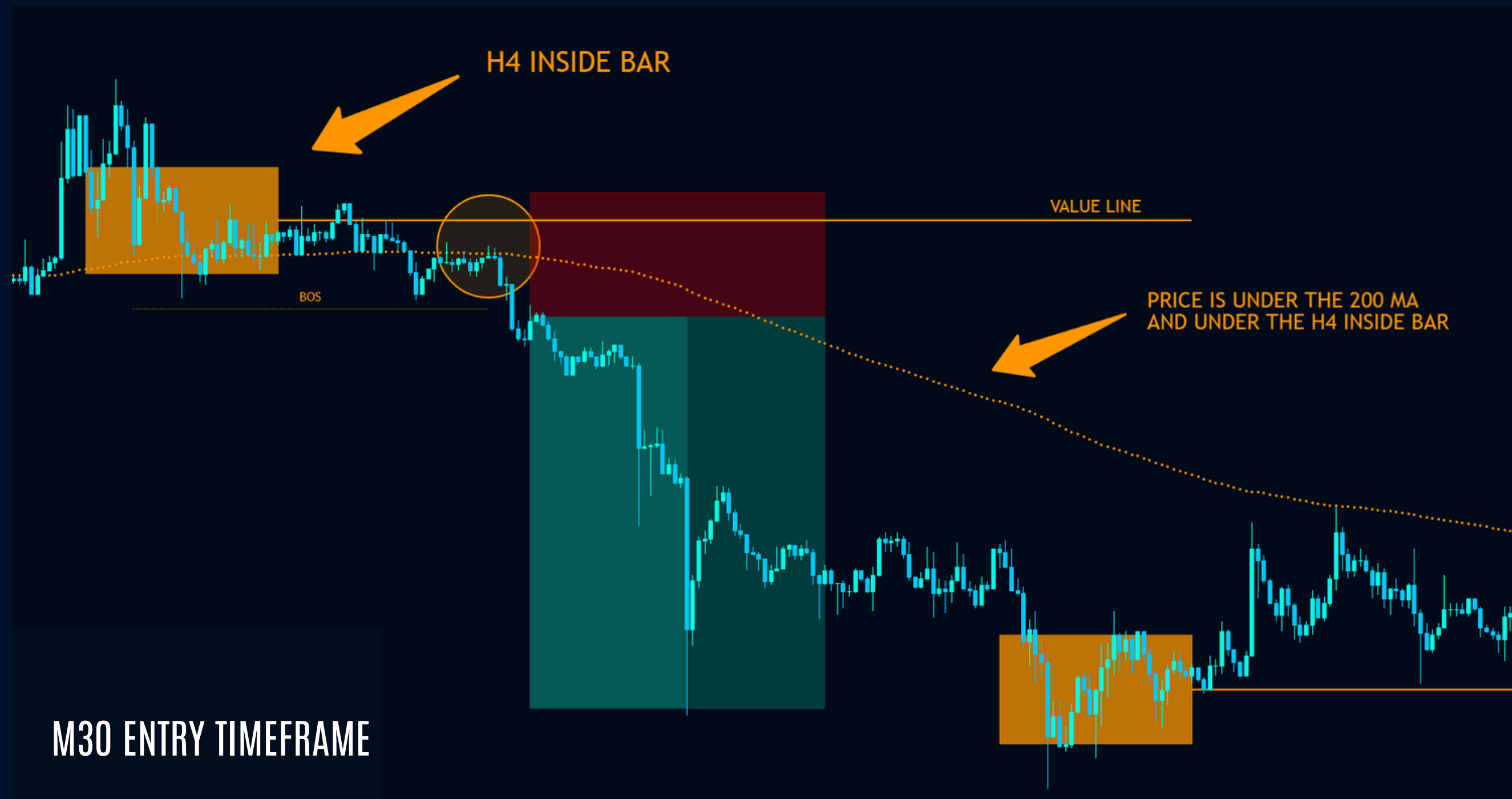
It defines the line between buyer and sellers, and help you know when is the best time to buy and sell

# LONG / SHORT BAROMETRE



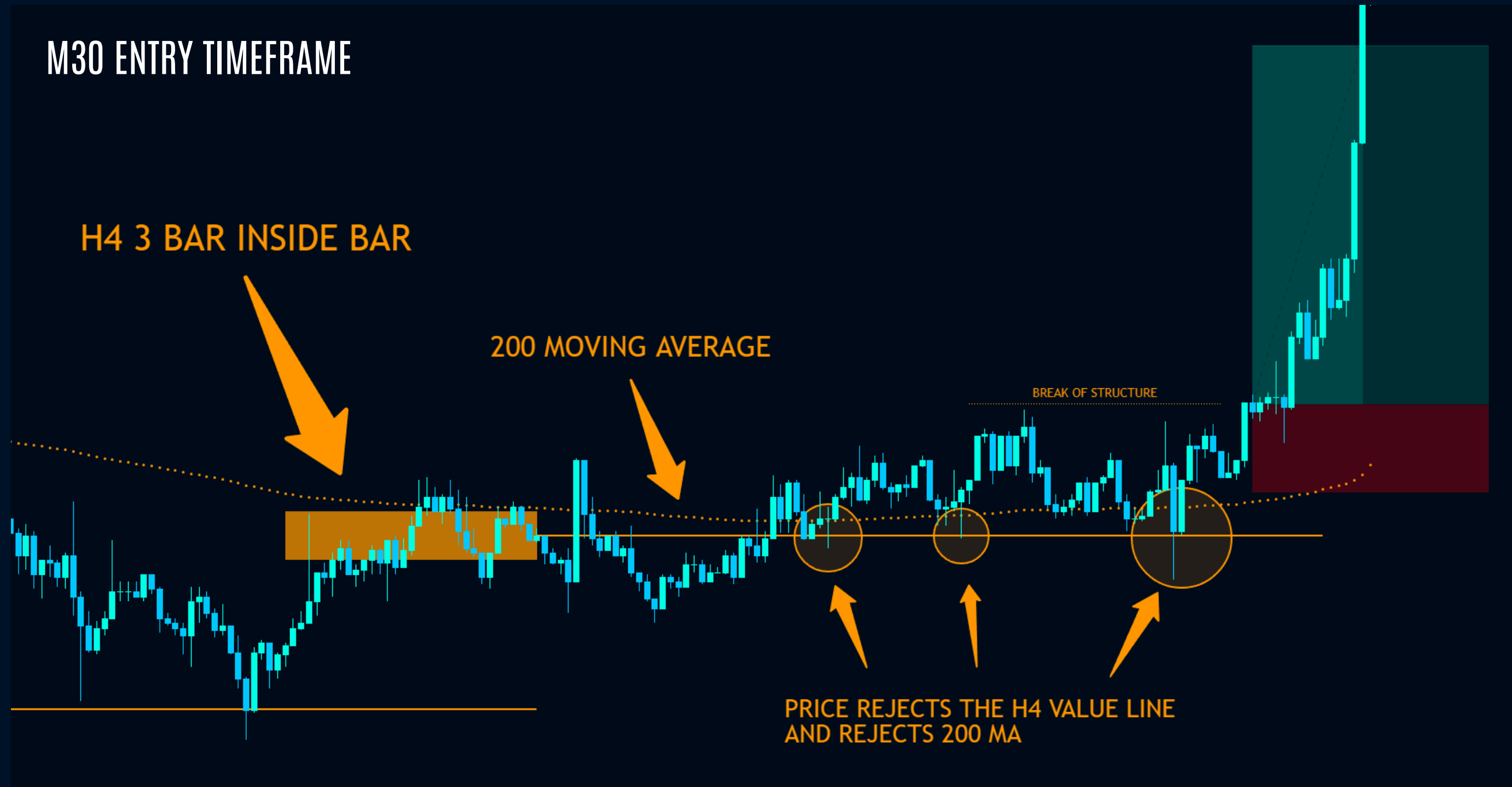
When price is above the HTF 3 BAR VALUE LINE, you only look to long.  
When price is below the HTF 3 BAR VALUE LINE, you only look to short.

# TRADING THE 3 BAR WITH 200 MA | SHORT



When price is below the HTF inside bar and the 200 ma its a sign to look for shorts, usually there will be a big movement when price settles under this level.

# TRADING THE 3 BAR WITH 200 MA | LONG

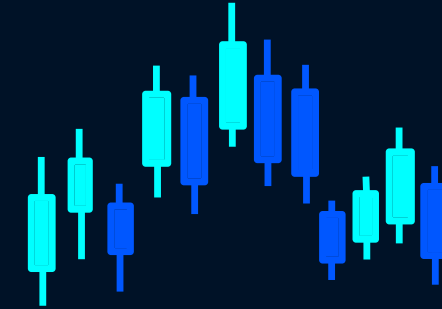


When price is above the HTF inside bar and above the 200 ma its a sign to look for longs, usually there will be a big movement when price settles above this level.

# 03

## MULTI-BAR MASTER PATTERN

Based on MULTI bar HL / LH contraction logic



The **Multi-Bar Inside Bar** consists of multiple candle bars that form a grouped contraction zone, this can be noticed by a squeeze in price and a lower high and higher low happening simultaneously.

When this occurs our software draws a box around this zone, and this signifies the start of a 3 phase market cycle called the **contraction phase**.

**Contraction phases** are a leading volatility signal, and let you know that low institutional volume is happening in the market, and that soon a expansion of price will occur.

Once price breaks out of the box, this is the start of the 2nd phase called the expansion phase. Our software extends a line out the center of the box when this occurs, this is known as the value line.

**Value lines** represent the balancing point for the market makers book of business and shows the fair value line between the buyers and the sellers, which provides an excellent reference point to place your long and short trades off of.

# HOW TO TRADE IT

You can apply a variety of [trading strategies](#) when trading the multi-bar master pattern. It is one of the most versatile signals you can receive and will compliment any strategy you already using.

This pattern allows you to identify the 3 phases in the market which make up 1 market cycle, this can tune you into the market makers trading strategy and help you emulate their trading strategy.

It clearly shows you where price is located within a market cycle, which can equip you with a massive edge in knowing how to trade each phase accordingly.

It is best traded in a trending markets, but can also be excellent in a ranging markets once you understand the principles of how to use the value lines.

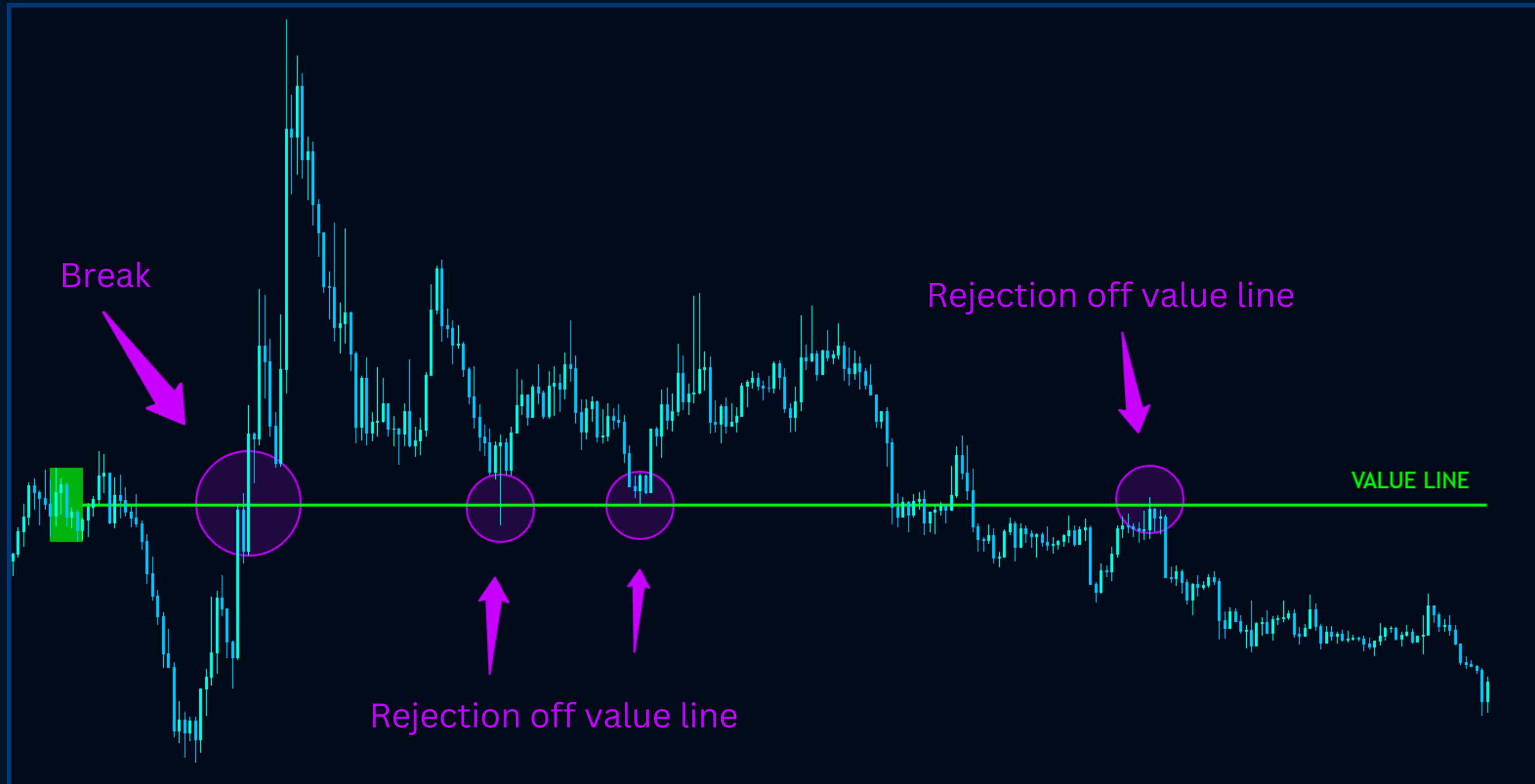
For extra confluence you can trade this pattern with other indicators such as *Moving Averages*, *Central pivot range*, *TDI*, and *RSI divergences*.

# TRADING THE MULTI-BAR MASTER PATTERN



You can use the HTF for BIAS and the LTF for ENTRIES.

# SIMPLIFY TRADING WITH THE VALUE LINE



The **HTF VALUE LINE** shows you the dividing point between seller and buyer activity, when price settles above the higher time frame value line you go long, when it settles below you go short.

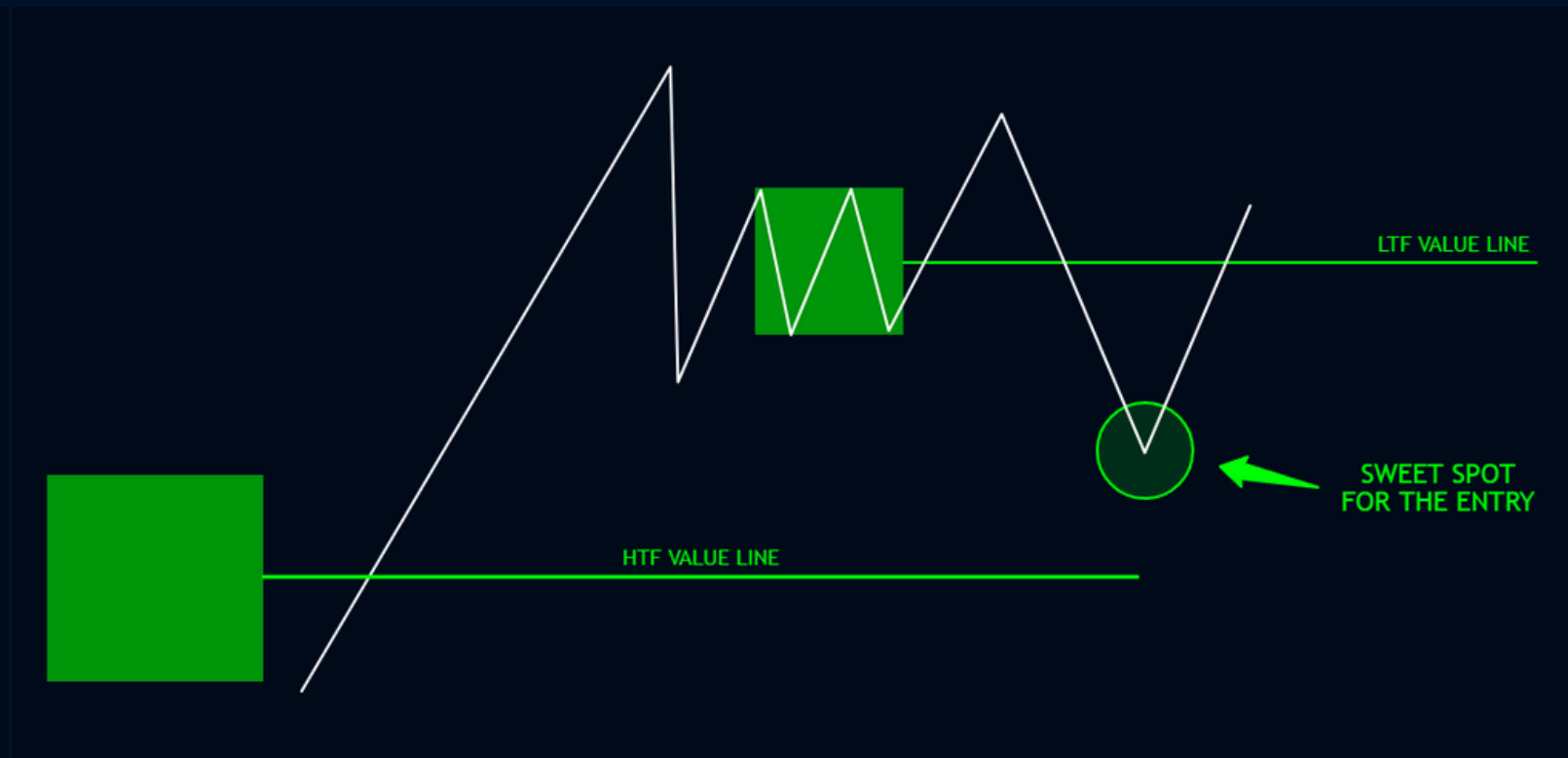
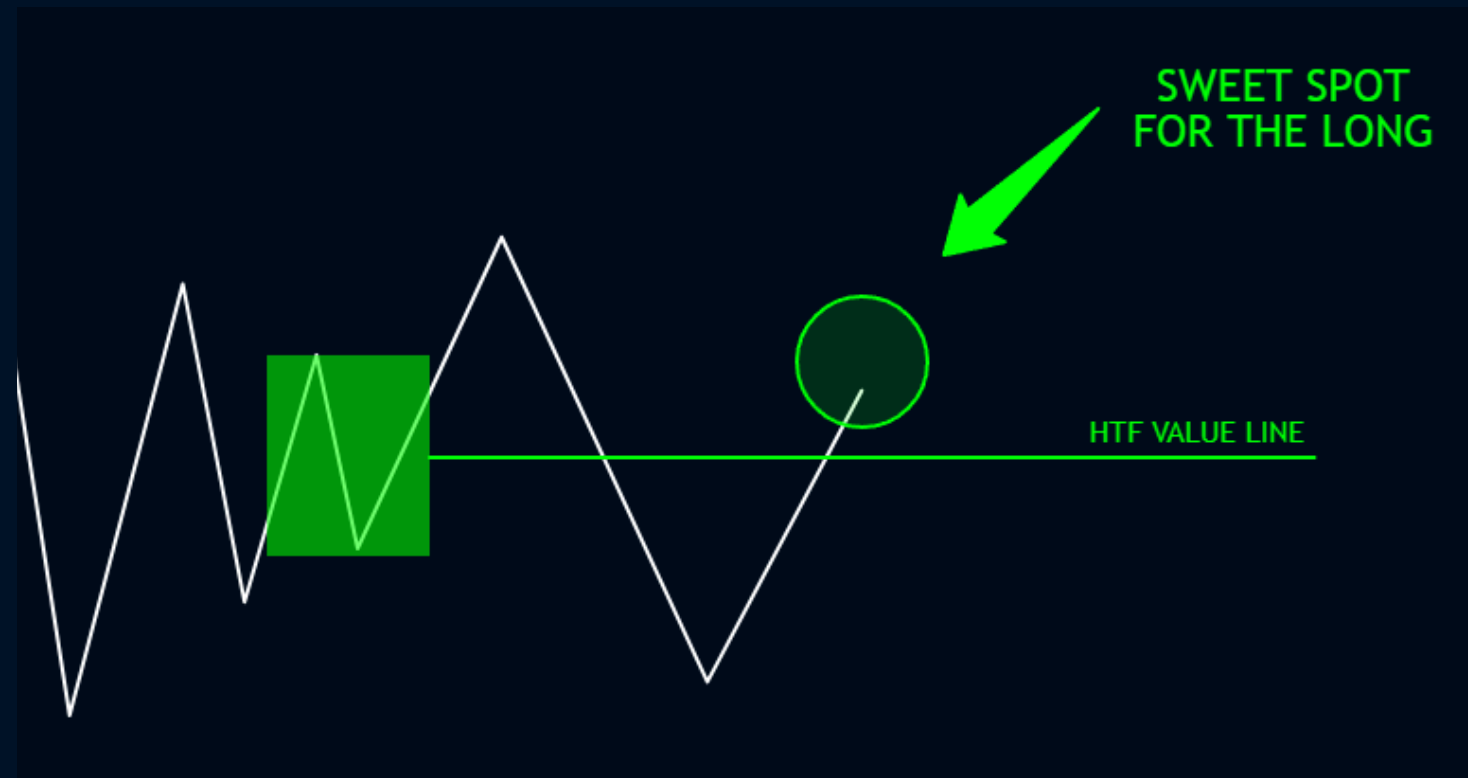
# HOW TO DEFINE A LONG SETUP

HTF BIAS - SWEET SPOT

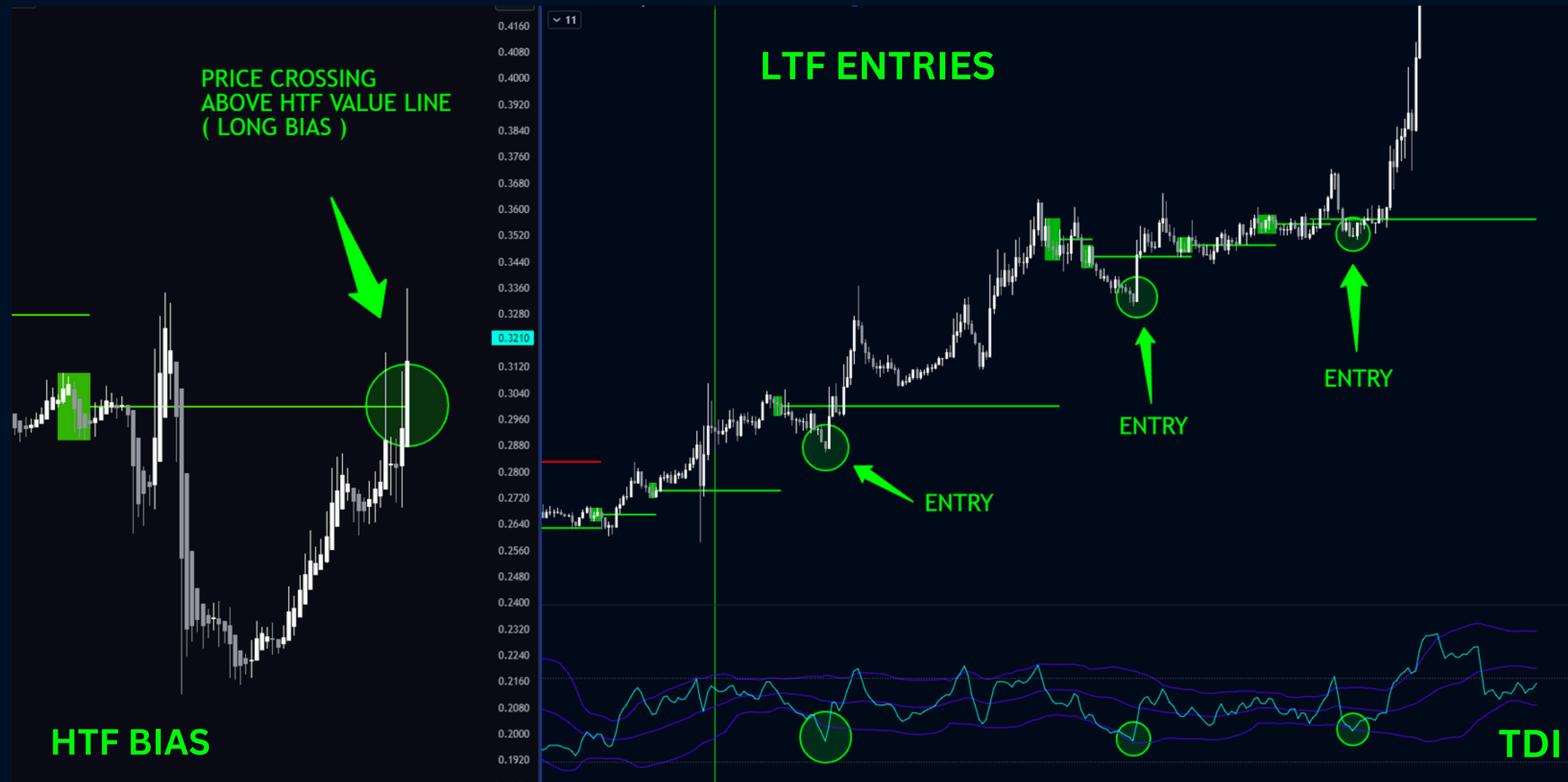
LTF ENTRY - SWEET SPOT

HTF - DAILY | 12HR | 8HR / 4HR

LTF - 30M | 15M | 5M



# LONG ENTRY WITH THE MASTER PATTERN



In this strategy you can use the HTF VALUE LINE to identify your BIAS, and then the lower time frame value lines for your entries with the TDI for confirmation, this provide a clear trading blueprint.

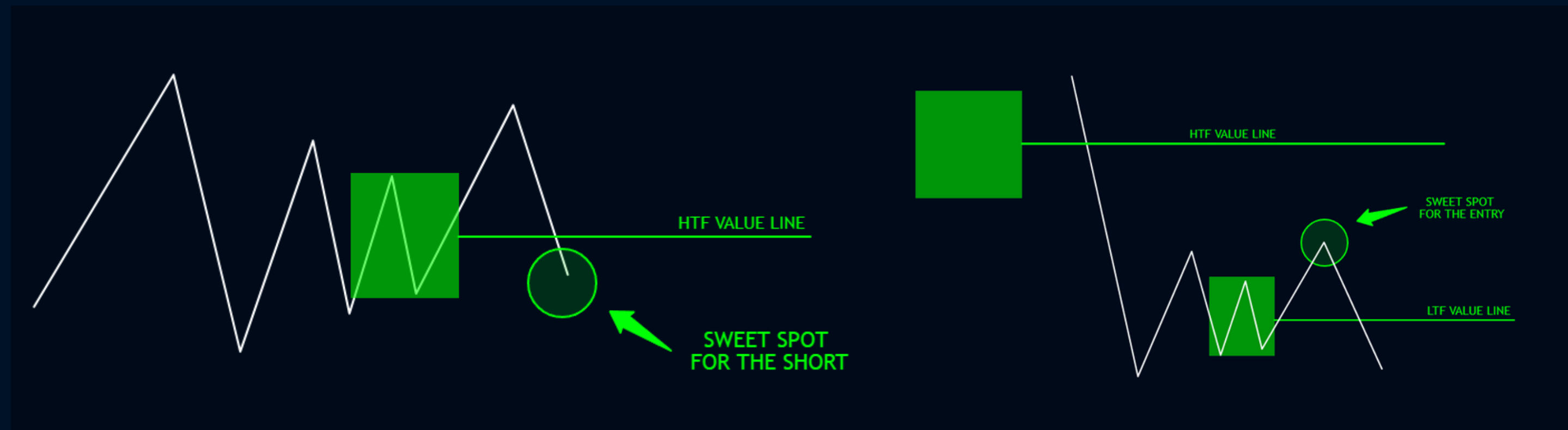
# HOW TO DEFINE A SHORT SETUP

**HTF BIAS - SWEET SPOT**

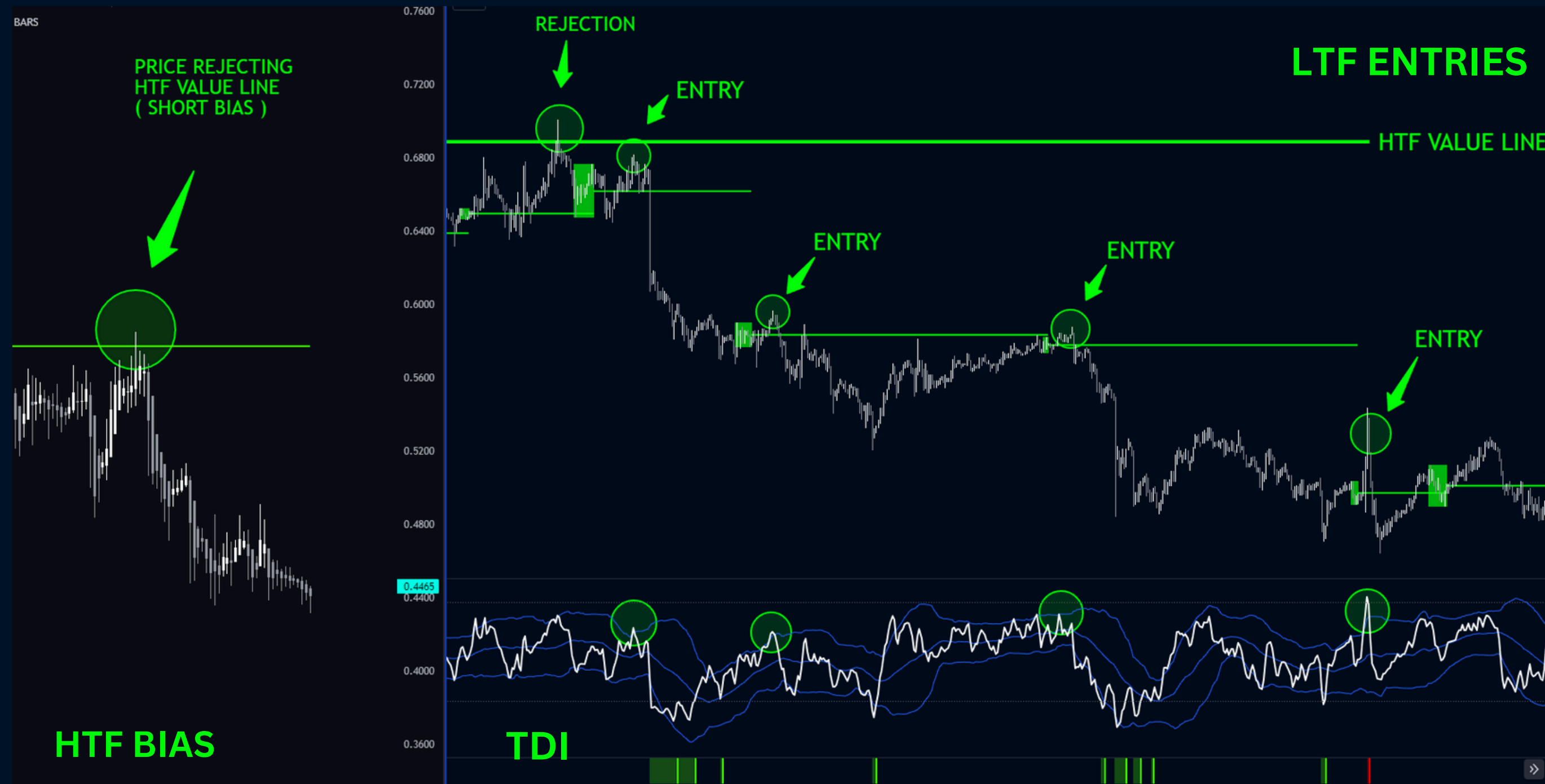
**LTF ENTRY - SWEET SPOT**

HTF - DAILY | 12HR | 8HR / 4HR

LTF - 30M | 15M | 5M



# SHORT ENTRY WITH THE MASTER PATTERN



In this strategy you can use the HTF VALUE LINE to identify your BIAS, and then the lower time frame value lines for your entries with the TDI for confirmation, this provide a clear trading blueprint.