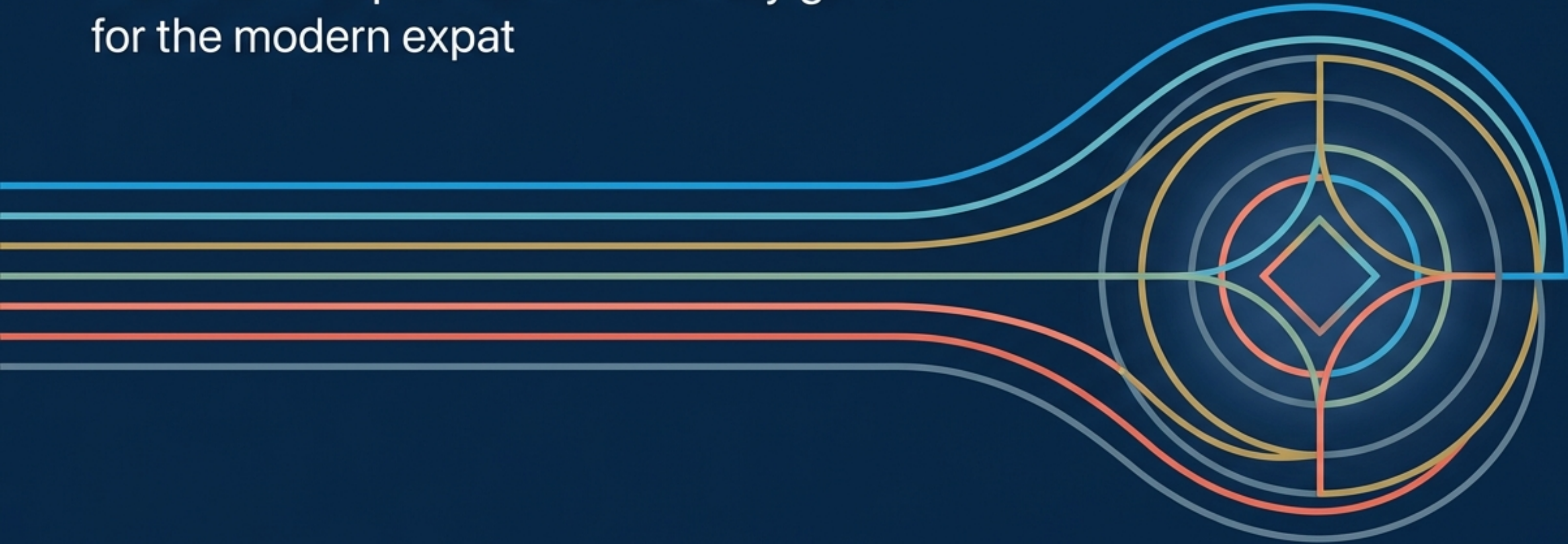


Decoding the Global Move

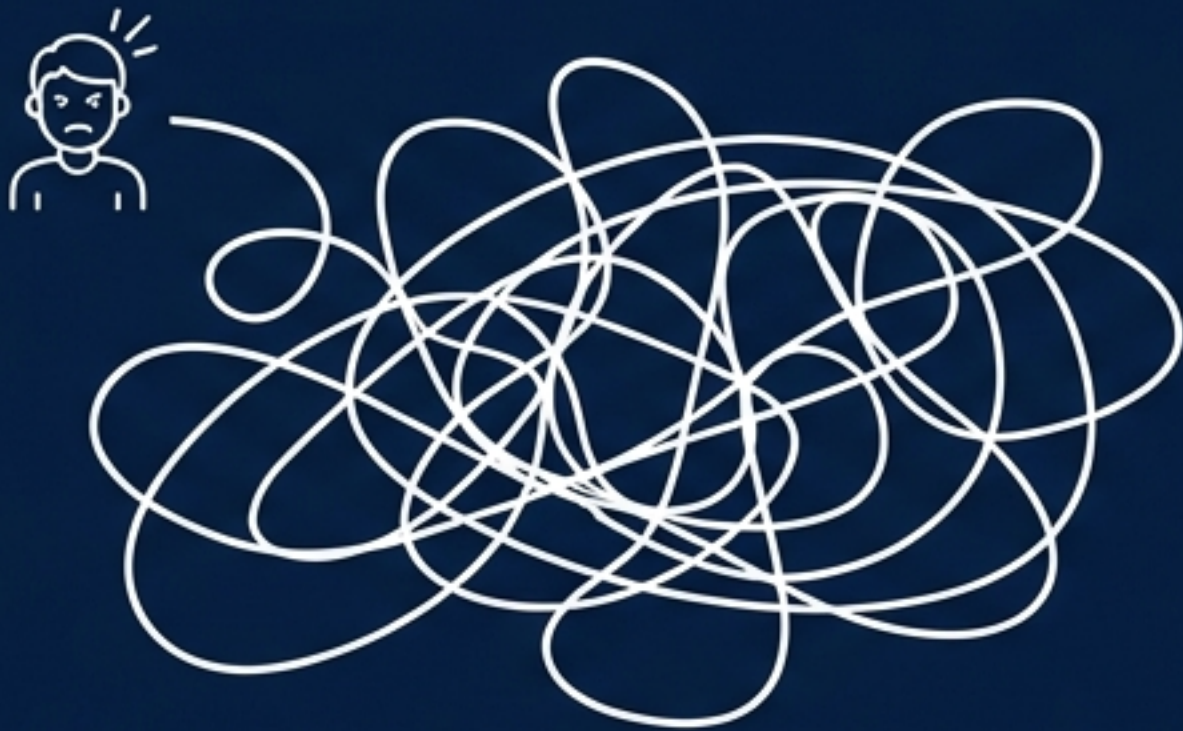
A master blueprint and vocabulary guide
for the modern expat



Essential frameworks for navigating visas,
residency, and international relocation.

Moving abroad is rarely a single sequential process.

The Illusion



The Linear Myth:
A single, overwhelming checklist.

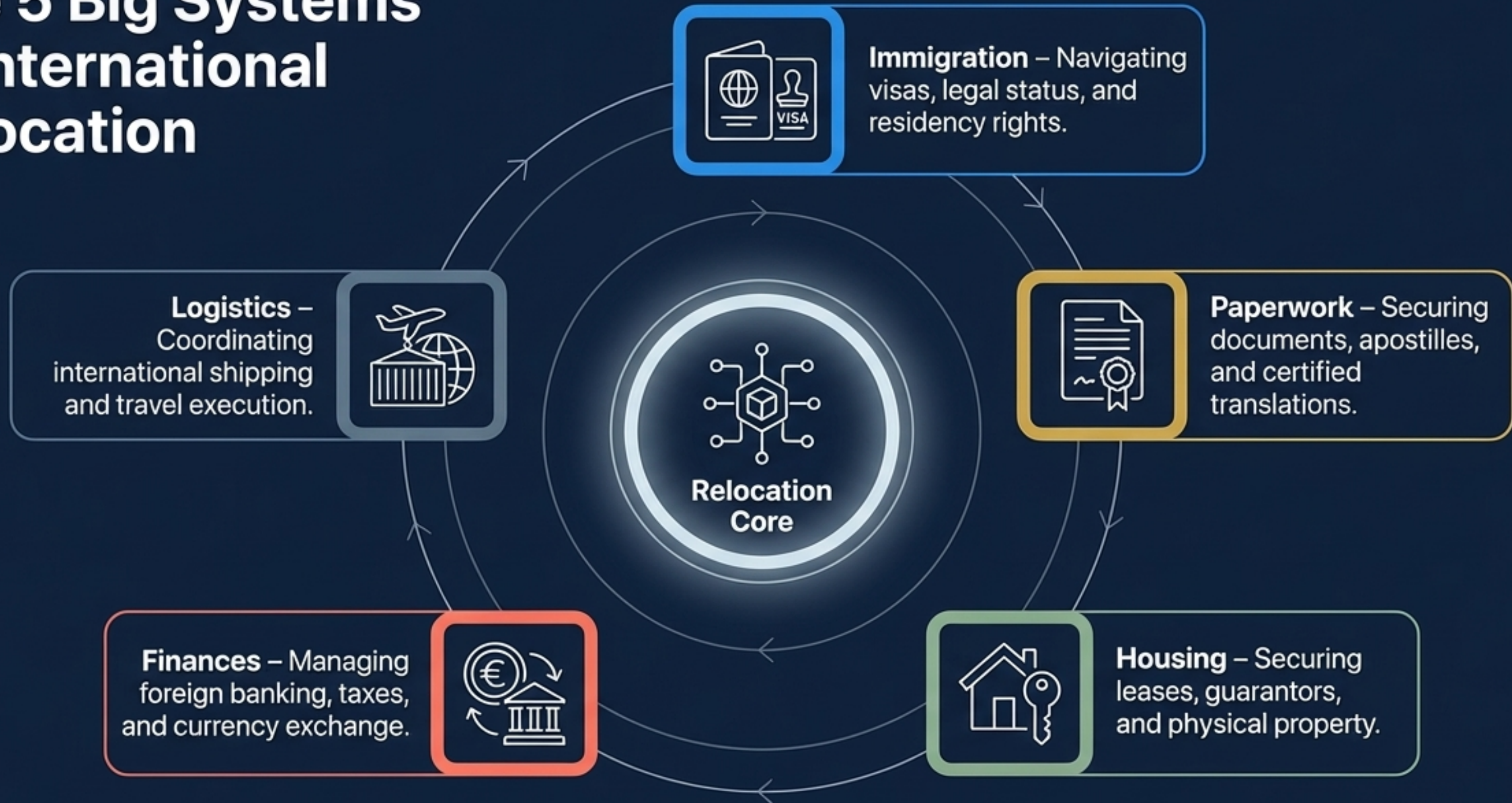
The Reality



The Orchestrated Symphony:
Multiple distinct processes executed in parallel.

The most critical beginner insight is that relocation is not one massive hurdle. It is a collection of small, manageable systems running concurrently—from authenticating paperwork to downsizing belongings. By understanding the distinct vocabulary of these systems, chaotic anxiety transforms into a clear, actionable plan.

The 5 Big Systems of International Relocation



Mastering these five independent systems is the key to an organized relocation.

The Legal Status Progression Funnel



The Right to Remain: Visa vs. Residency



Visa



Residency

Primary Function

Permission for entry and short-term stay.

Authorization to build a life and live long-term.

Duration

Short or strictly fixed duration.

Temporary (1-3 years) transitioning to indefinite.

Allowed Actions

Specific allowed purposes only (Visit, Study, temporary Work).

Foundational living tasks (Rent property, open domestic bank accounts, enroll in national healthcare).

The Core Difference

The Invitation — gets you through the border.

The Key — unlocks the local infrastructure.

The Machinery of Immigration Approval

Proof of Income



Documentation proving recurring money to support yourself.

Examples: Pension statements, investment dividends, remote work income.

Often subject to minimum monthly thresholds.

Proof of Funds



Evidence of accessible liquid savings.

Example: Bank statements showing a required cash reserve (e.g., \$30,000).

Sponsorship



A person or organization financially underwriting your application.

Context: Common in family reunification or student visas.

Biometrics & Interviews



Physical identification entered into immigration systems (fingerprints, photos, digital scans).

Often culminates in a mandatory in-person Immigration Interview with officials.

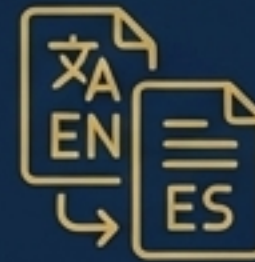
The Document Verification Spectrum

Notarization



- **What it validates:**
The Signature & Identity.
- **Who issues it:**
Local Notary Public.
- **Where it holds power:**
Domestic use. Proves a document was signed legally by the actual person. Often applied to a Certified Copy (an officially verified reproduction used instead of an original).

Certified Translation



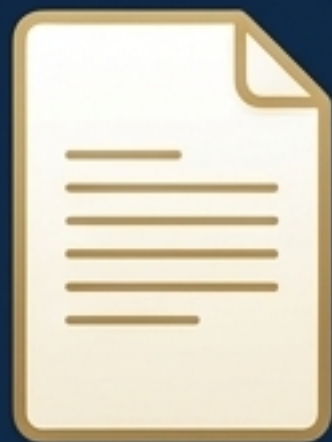
- **What it validates:**
The Meaning.
- **Who issues it:** Official, licensed translators.
- **Where it holds power:**
Inter-linguistic use. Converts a document (e.g., an English birth certificate into Spanish) with a legal guarantee of accuracy.

The Apostille



- **What it validates:**
International Legitimacy.
- **Who issues it:** State or National Government.
- **Where it holds power:**
International borders. A specialized certification that allows a document issued in one sovereign nation to be legally accepted in another.

The Chain of Trust: How an Apostille Works



Step 1: The Origin Document

You obtain an essential domestic document. Common requirements include birth certificates, marriage certificates, diplomas, and Criminal Background Checks (e.g., an FBI background check or police clearance certificate proving no serious criminal record).



Step 2: State Verification

The document is submitted to the issuing state/national government. They verify the domestic signatures and attach the Apostille—a universally recognized international seal.



Step 3: International Acceptance

Because the destination country recognizes the Apostille treaty, the document seamlessly bridges the gap between two sovereign legal systems and is accepted as legitimate.

Establishing the Living Infrastructure



Housing

Lease Agreement

The core contract defining the deposit, rent amount, and duration.

Security Deposit

Funds held to cover potential damages, usually refunded at term end.

Furnished vs. Unfurnished

Unlike the U.S., many countries heavily default to renting fully furnished units (including appliances).

Guarantor

A required third party who guarantees rent if the tenant defaults (highly common in Europe).



Finances

Foreign Bank Account

Essential local infrastructure to pay rent, utilities, and receive income.

Transfer Mechanics

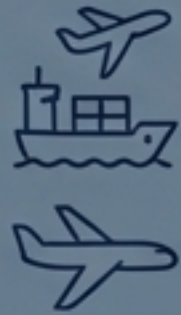
Navigating the Exchange Rate (value comparison, e.g., 1 USD = 0.92 EUR), executing Wire Transfers for large property purchases, and minimizing Foreign Transaction Fees.

Tax Residency

Determined by physical presence (days spent) and income location. Protected by Double Taxation Agreements (treaties preventing paying tax on the same income twice).

Moving the Household and Securing Health

International Shipping



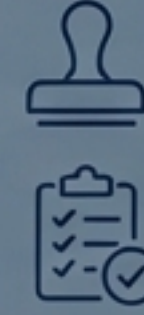
The Route

Managing your physical relocation via air freight or sea. Choose between **Container Shipping** (exclusive 20ft or 40ft cargo containers for full households) or **Consolidated Shipping** (sharing container space; a much cheaper but slower alternative).



The Gatekeepers

Freight Forwarders coordinate the bookings, customs paperwork, and transport.



Customs

You must provide a strict **Inventory List** to Customs authorities, who inspect goods and assess **Customs Duty** (taxes on imports, though new residents are often exempt).

Healthcare Frameworks



Public Healthcare System

Government national health systems available to legal residents.



Private Health Insurance

Privately purchased coverage, frequently a mandatory prerequisite for residency visas.



International Health Insurance

Portable coverage specifically designed for expats crossing multiple borders.

Border Rules & The Cultural Adjustment Curve

Azure: Immigration

The Rules of Entry



Passport Validity: Official travel document; universally must be valid for 6 months beyond the travel date.



Entry Stamp: The physical passport mark dictating the start of legal presence.



Visa Overstay: Exceeding allowed time, risking severe fines or entry bans.



Border Run: Leaving and immediately re-entering a country to reset a tourist visa (increasingly discouraged globally).

The Expat Emotional Timeline

The Culture Shock Curve



The Parallel Process Highway

Orchestrating Lead Time across the 5 Systems



Takeaway: Lead Time (3–12 months) is not empty waiting. It is the active, simultaneous management of distinct systems.

From Chaos to Architecture



Moving abroad is not a leap into the unknown; it is a managed system of legal, financial, and logistical frameworks. By mastering the vocabulary of the 5 Big Systems, you transform the overwhelming chaos of relocation into a predictable, step-by-step master blueprint.

The territory is vast, but you now have the map.