

THE 60-SECOND CIRCUIT BREAKER



1:49

4:10



A Somatic Protocol for De-Escalating the
"Scorched Earth" Fight Cycle and
Restoring Biological Safety

Executive Summary

The **60-Second Circuit Breaker** is a somatic, attachment-informed protocol developed by The Attachment Institute to help couples interrupt high-conflict cycles before emotional escalation causes relational damage.

The Core Problem

During intense conflict, heart rate spikes trigger a neurobiological survival response that temporarily disables empathy, reasoning, and communication skills. In this state, partners are not choosing behavior—they are reacting to perceived threat.

The Solution

This protocol provides a **manual nervous-system override** that:

- Interrupts biological hijack
- Restores access to executive function
- Creates conditions for safe repair and reconnection

Key Components

- Identification of attachment-based survival styles (Chaser / Runner)
- Recognition of early somatic warning signals
- A 60-second breathing and labeling protocol (Bio-Anchor)
- Structured timeouts with safety-preserving language
- Somatic repair strategies to close stress loops

Intended Outcomes

- Reduced conflict escalation
- Faster emotional recovery after disagreement
- Increased relational safety and trust
- Expanded window of tolerance over time



THE 60-SECOND CIRCUIT BREAKER

A Somatic Protocol for De-Escalating the “Scorched Earth” Fight Cycle and Restoring Biological Safety

Official Protocol v1.0

The Attachment Institute

Confidential Framework for Couples in High-Conflict Cycles

Table of Contents

1. Summary
2. Why “Talking It Out” Is Biologically Impossible During Conflict
3. The Attachment Decoder (The “Who”)
4. The Window of Tolerance (The Diagnostic)
5. The Body Map (Interactive Exercise)
6. The Bio-Anchor (The Core Protocol)
7. The Science of Co-Regulation
8. The Rapid Reset Scripts
9. The Repair Protocol
10. The Bridge



Summary

This protocol is designed as a confidential framework for couples in high-conflict cycles, provided by The Attachment Institute. It outlines a somatic strategy—the **60-Second Circuit Breaker**—for de-escalating intense relational conflict, restoring biological safety, decoding attachment survival styles, and providing actionable tools for repair and reconnection.

Why “Talking It Out” Is Biologically Impossible During Conflict

Most couples believe that if they just had the “right words” or more patience, they could avoid the “Scorched Earth” fights that leave them emotionally exhausted for days. The biological reality, however, is that during acute conflict, the human brain’s higher reasoning systems are not fully accessible.

The 100 BPM Threshold

When conflict escalates, the heart rate often exceeds approximately 100 beats per minute. At this point, an automatic survival response is activated. Blood flow is redirected away from the prefrontal cortex—the region responsible for logic, empathy, and long-term decision-making—and toward the amygdala, the brain’s primary threat-detection system.

The Result of the Hijack

In this state, individuals are no longer operating as intentional partners but as biological organisms responding to perceived threat. Nuance disappears, empathy is inaccessible, and previously learned communication skills are temporarily unavailable.



The Attachment Institute Perspective

These reactions are not character flaws. They are predictable neurobiological responses. The purpose of this protocol is to manually interrupt the stress response and restore access to higher-level cognitive functioning.

The Attachment Decoder (The “Who”)

Identifying Survival Styles in Conflict

During biological hijack, individuals revert to early-learned survival strategies. Identifying these patterns is essential for interrupting escalation.

Survival Style A: The Chaser (Anxious Attachment)

Internal Driver:

Fear of abandonment or loss of connection.

Somatic Indicators:

A hollow or dropping sensation in the stomach, accelerated heart rate, and an urgent need to resolve the issue immediately.

Behavioral Expression:

Repeated questioning, following a partner from room to room, escalating volume or urgency to elicit engagement.

Internal Narrative:

“If I don’t get them to talk to me right now, we are going to lose everything.”

“Seeing the ‘Chaser/Runner’ dynamic on paper changed everything. I stopped seeing my husband as ‘cold’ and started seeing him as ‘protected.’ That shift alone dropped our fight frequency by half in the first week.” — Sarah T., Verified Participant

Survival Style B: The Runner (Avoidant Attachment)

Internal Driver:

Fear of criticism, rejection, or emotional engulfment.

Somatic Indicators:

Emotional numbness, tightness in the chest, cognitive fog, and a desire to avert gaze or exit the space.

Behavioral Expression:

Emotional withdrawal, intellectualization, stonewalling, or physically leaving the environment.

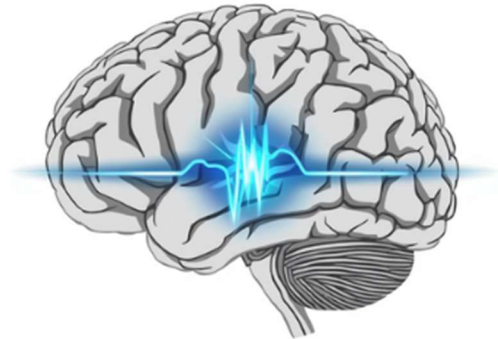
Internal Narrative:

“I can’t do anything right here. I need to get out of the line of fire.”

The Window of Tolerance (The Diagnostic)

Understanding the Conflict Zone

The **Window of Tolerance** refers to the optimal range of nervous-system arousal in which a person can process stress without dysregulation.



- **Red Zone (Hyper-Arousal):**
Characterized by agitation, anger, impulsivity, and fight responses.
- **Blue Zone (Hypo-Arousal):**
Characterized by emotional shutdown, numbness, withdrawal, and freeze responses.
- **Green Zone (Window):**
The only state in which calm dialogue, emotional connection, and repair are possible.

In high-conflict relationships, the Green Zone becomes increasingly narrow. The objective of this protocol is to widen this window over time.

"I always thought I was 'calm' during fights because I didn't yell. This protocol helped me realize I was actually in 'Hypo-Arousal' (Shutdown). Learning to stay in the Green Zone has finally allowed us to actually solve problems instead of just pausing them." — Mark L., Graduate of the Full Toolkit

The Body Map (Interactive Exercise)

Identifying Pre-Symptom Signals

Conflict begins in the body before it emerges in words. Recognizing early somatic cues allows intervention before escalation.

Common Chaser Indicators:

- Tingling or buzzing in the hands or arms
- Heat rising into the neck or face
- Rapid, shallow breathing
- Restlessness in the legs
- Tightness or lump in the throat

Common Runner Indicators:

- Cooling or numbness in extremities
- Heavy pressure in the chest
- Jaw clenching
- Tunnel vision
- Sudden fatigue

Partner Exercise:

Partners share and observe one another's indicators. When these cues emerge, the Circuit Breaker must be initiated immediately.

"I used to think our fights came out of nowhere. Once I mapped my 'somatic tells,' I realized my jaw clenches three minutes before I say something I regret. Catching it at the physical level is the only thing that has ever worked for my temper." — Jason R., Verified Participant



The Bio-Anchor (The Core Protocol)

The 60-Second Manual Override

Once somatic cues appear, there is a brief window to interrupt the stress cascade.

Step 1: Cognitive Freeze

Pause verbal communication immediately. Avoid finishing arguments or asserting conclusions while the prefrontal cortex is compromised.

Step 2: The 4-7-8 Bio-Brake

- Inhale through the nose for 4 seconds
- Hold for 7 seconds
- Exhale slowly through pursed lips for 8 seconds
- Repeat three times

Step 3: Somatic Labeling

Name the physical sensations aloud (e.g., “My heart is racing and I feel heat in my chest”). This verbalization reengages higher cognitive function.

The Power of One

The Power of One: How to Lead a "Stealth" De-escalation

Section 1: You Are the Thermostat A common misconception in relationship work is that both partners must be "on board" for things to change. While mutual effort is the goal, the science of **Co-Regulation** proves that a single regulated nervous system can act as an anchor for a chaotic one.



"The 4-7-8 Vagal Brake felt too simple to work. But the first time I used it while my heart was racing, I felt the 'flip' back into my logical brain within seconds. It's like a cheat code for your own nervous system." — Elena W., Somatic Protocol User

Because of **Mirror Neurons**, your partner's brain is constantly "scanning" your biological state. If you are breathing shallowly, tensing your jaw, and raising your pitch, their brain receives a "Threat Signal" and stays in Lizard Mode.

Section 2: Leading by Biology, Not Logic When you use the **Bio-Anchor**, you aren't just calming yourself. You are fundamentally changing the "Atmospheric Pressure" of the room.

- **The Stealth Reset:** Even if your partner has never heard of the 4-7-8 breath or The Attachment Institute, their brain will subconsciously detect your lowered heart rate and softened muscle tone.
- **The Biological "Safe Harbor":** As you stabilize, you become a "Safe Harbor." It is biologically difficult for a human being to remain in a state of high-arousal (Fight) when the person they are with is exhibiting the physical signals of deep safety.

"My partner refused to read the PDF at first. I decided to use the 'Stealth De-escalation' anyway. By the third time I stayed regulated while he was venting, he literally stopped mid-sentence and asked, 'Why aren't we fighting right now?' It works even if only one of you does it." — David S., Somatic Protocol User

Section 3: The Directive You do not need your partner's permission to use this protocol. In fact, the most effective way to introduce this to a "Runner" or a "Chaser" is to simply **do it**. When you lead with your body, their nervous system has no choice but to follow.

The Science of Co-Regulation

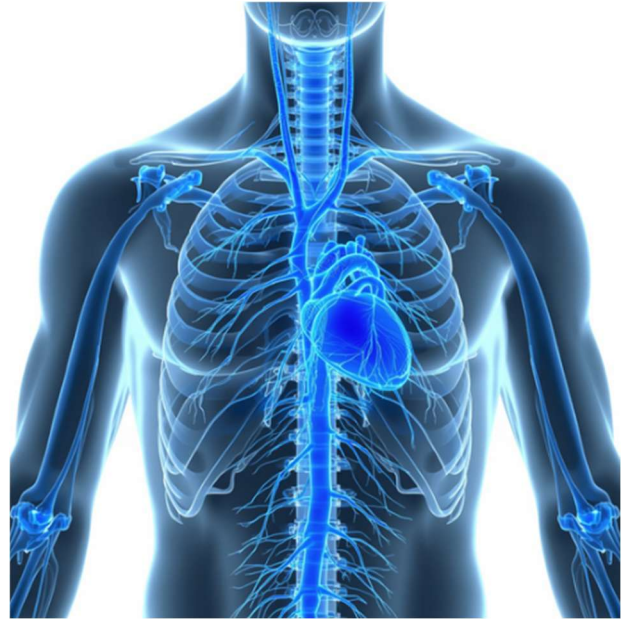
Nervous Systems in Relationship

Human nervous systems are inherently relational. Through mirror-neuron activity, individuals naturally synchronize emotional states.

A dysregulated partner can unintentionally pull the other partner into the same state. Effective regulation, therefore, begins internally.

The Secure Base Principle

A regulated nervous system provides a stabilizing reference point for the other. In this dynamic, individuals act as thermostats rather than thermometers—setting emotional temperature rather than reflecting it.



Your Nervous Systems are Always "Speaking" (The Mirror Neuron Effect).

The Concept: As humans, we are "Obligate Co-Regulators." Our brains are wired to sub-consciously monitor and match the emotional states of those around us. We have **Mirror Neurons** that allow us to "catch" the activation (stress) of our partner in microseconds.

Section 1: The Co-Escalation Trap This is the scientific reason a small argument becomes "Scorched Earth."

1. **Partner A** is triggered (jumps to the Red/Blue zone).
2. **Partner B's** Mirror Neurons detect the threat (Partner A's tone, tense body).
3. **Partner B's** brain, assuming there is a predator, automatically launches its *own* survival response (Fight or Flight). **Within seconds, you have two "Lizard Brains" attempting to negotiate.** This is Co-Escalation, and it is biologically doomed to fail.

Section 2: The "Secure Base" Strategy The only way to break this loop is to understand that **You are the thermostat, not the thermometer.** You do not have to reflect your partner's heat.

The goal of **The Attachment Institute** is for one partner to use the **Bio-Anchor** so *effectively* that their regulated body provides a "**Safe Harbor**" for the other partner. When you calm your own heart rate, your partner's Mirror Neurons "catch" your safety, and their "Human Brain" begins to come back online. **Your calm heals their fight.**

The Rapid Reset Scripts

The 20-Minute Safety Timeout

The purpose of a timeout is physiological reset, not avoidance.

Secure Anchor Script:

"I'm starting to feel flooded. I want to stay connected, but I need 20 minutes to reset my nervous system. I will return at [specific time] so we can continue safely."

Timeout Guidelines:

- A specific return time must be stated
- The interval must be spent regulating, not rehearsing conflict
- The initiator is responsible for reconnection



The Repair Protocol

Somatic Re-Entry After Conflict

Resolution requires more than silence; it requires embodied reassurance.

- **20-Second Hug:** Chest-to-chest contact stimulates oxytocin release
- **Soft Eye Contact:** 30 seconds without speaking reactivates social engagement circuitry

"We've spent \$10k on traditional therapy and always left feeling more disconnected. The Attachment Institute's focus on the body instead of 'talking about feelings' saved our marriage. The 20-second hug protocol does more for us than an hour on a couch ever did." — Robert & Claire H.

- **Affirmation of Safety:** Verbal acknowledgment of successful regulation reinforces new patterns

Ending the "Infinite Timeout"

The Golden Rule of Timeouts: The person who initiates the "Circuit Breaker" is legally responsible (within the relationship) for initiating the reconnection. This removes the "Chaser's" anxiety that a timeout is actually an abandonment, and it prevents the "Runner" from using a timeout as a permanent exit.

NOTE: Biologically, it takes the human body a minimum of 20 minutes to clear the cortisol and adrenaline of a fight. Never attempt a re-entry sooner than 20 minutes, even if you 'feel' fine.

The Re-entry Script: When the agreed-upon time (20–60 minutes) has passed, the initiator must return and use the "Soft Landing" Script. This is not the time to dive back into the argument; it is the time to confirm biological safety.

The Script: *"I am regulated now, and I'm back. I'm still committed to resolving [The Issue], but I wanted to check in and see if your nervous system feels ready to try again, or if we need to schedule a time tomorrow when we are both in the Green Zone."*

Section: Why This Works

"The 'Soft Landing' script is a lifesaver. As a Chaser, I used to panic when he left the room. Now that I know he has a 'Return Responsibility' and a script to follow, I can actually breathe while he's gone. The silence isn't scary anymore." — Michelle B., Somatic Protocol User

- It creates a "Closed Loop": The Chaser knows exactly when the conversation will resume, which lowers their panic.
- It honors the Biology: If one partner is still in "Hypo-arousal" (Numb/Shut down), forcing the conversation will only trigger a new hijack. Scheduling a future time is a proactive win, not a defeat.



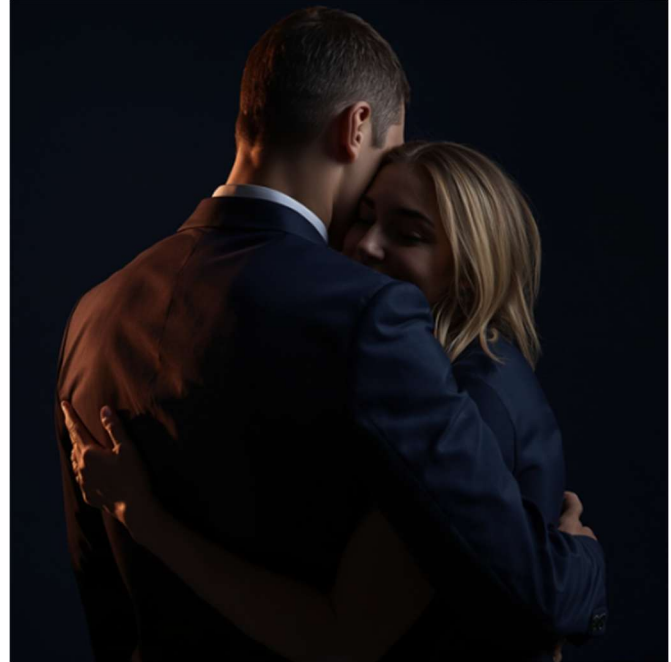
From Conflict Management to Secure Connection

The Circuit Breaker prevents relational damage; it does not resolve underlying attachment wounds.

Deeper connection requires proactive, repeated regulation practices that reinforce safety and trust over time.

You've Stopped the Fire. Now, Let's Rebuild the Foundation.

The Reality Check: The 60-Second Circuit Breaker is the most powerful tool in your relationship arsenal. It is your emergency brake. It is the "Fire Extinguisher" that prevents a single spark from turning into a week of "Scorched Earth" silence.



But here is the truth: An emergency brake doesn't fix a broken engine. If you find yourself having to pull the "Circuit Breaker" every single day, it means your relationship is still living in a state of high-alert.

To move from "Managing Conflict" to **Effortless Intimacy**, you have to go deeper than just stopping the fight. You have to rewire the subconscious triggers that cause the fight in the first place.

The Full Protocol: The Somatic Connection Toolkit The Circuit Breaker is only **Step 1** of the 5-part **Attachment Institute Framework**. To achieve "Earned Security" and a marriage that feels like a safe harbor rather than a battlefield, you need the complete system:

- **The Trigger Map:** A deep-dive diagnostic to identify the 3 "Core Wounds" that drive 90% of your arguments. (Once you see the map, you can't "un-see" the patterns).
- **The 30-Day 'Secure Base' Calendar:** Daily 2-minute somatic exercises designed to widen your **Window of Tolerance** so things that used to trigger you simply "bounce off."
- **The Conflict-to-Intimacy Script Library:** Exact, word-for-word scripts for the "Big Three" issues: Money, Sex, and Parenting. Learn how to disagree without ever hitting the "Hijack" button.

- **The Thought Auditor:** A cognitive reframing system to stop the "Negative Narratives" (e.g., "*They don't care about me*") before they manifest in your body.
- **The Masterclass Series:** Video guidance from **The Attachment Institute** on how to lead your partner through a somatic reset when they are too hijacked to do it themselves.

The Choice: You can continue to use the Fire Extinguisher every time the house starts to burn. Or, you can join us at **The Attachment Institute** and rewire the house for permanent safety.

Join 2,400+ couples who have moved from 'Scorched Earth' to Earned Security.