

# The Dopamine Advantage

The Foundational Theory of Energy Regulation



Understanding How Energy Behaves in the Human System

# How to Get the Most Out of This Workbook

This workbook is not meant to be rushed. It is meant to recalibrate your system. Energy regulation requires awareness & observation.

Move through each section slowly. Apply what you learn in real time.

As you read and reflect, begin tracking:

- Your energy stability throughout the day
- Your hunger and satiety signals
- Your sleep quality
- Your stress response
- Your focus and recovery



This is not theory. It is metabolic feedback.

Over time, you will begin to recognize:

- How food affects your clarity
- How sleep affects your hormonal rhythm
- How movement affects your mood
- How stress alters your energy output
- How breath regulates your nervous system

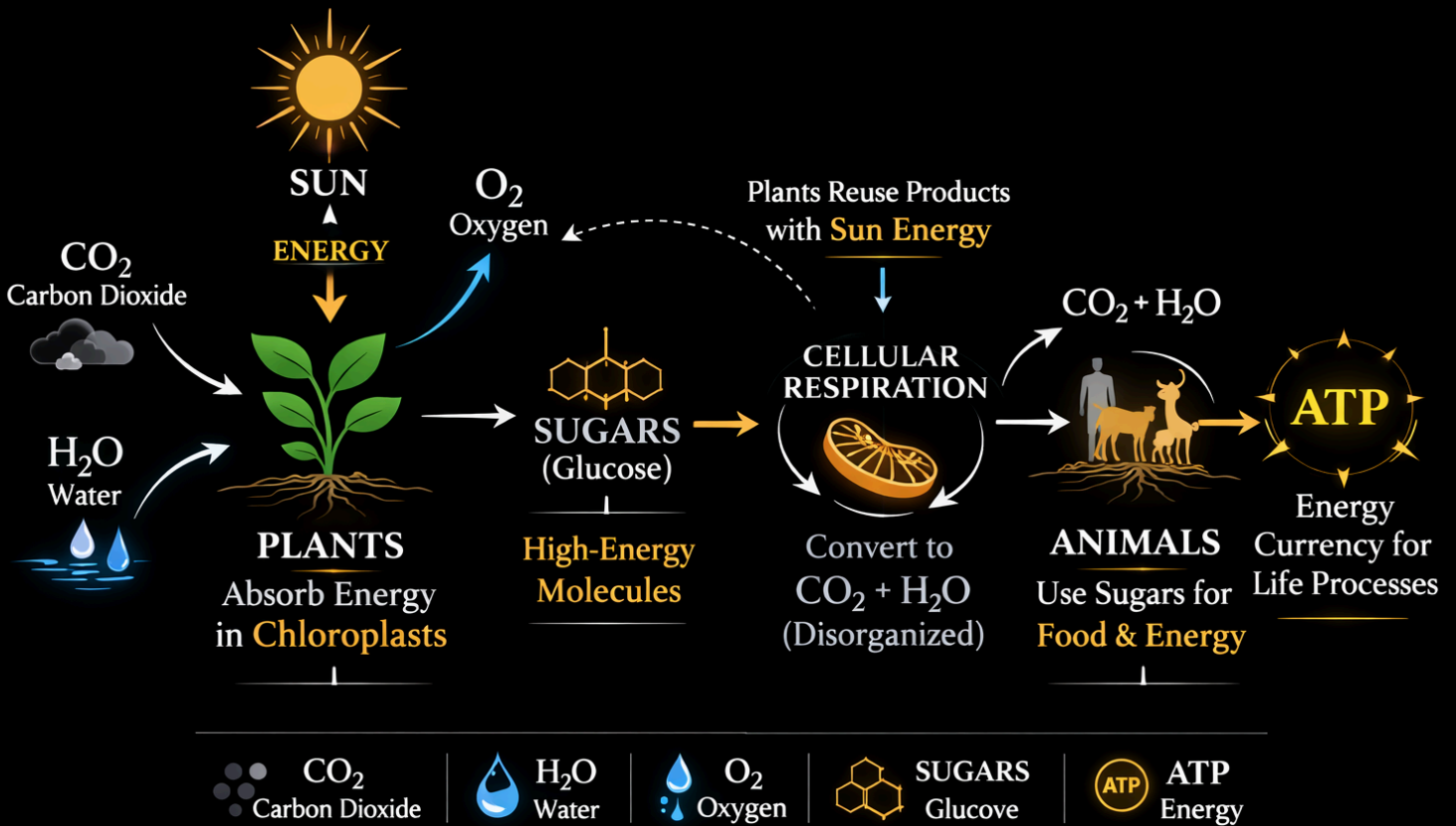
The goal is not restriction. The goal is efficiency.

Approach each principle with precision. Small adjustments in input create measurable changes in output. The more honest you are with your patterns, the faster you will stabilize your energy system. Stable energy creates stable behavior.

# Laws That Govern Energy

Energy cannot be created or destroyed.  
Energy can only be transferred or transformed.  
Your body does not create energy.  
It converts energy from food into usable fuel.

Sun → Food → Nutrients → ATP



Energy transfers are never perfectly efficient.  
Some energy is always lost as heat.  
This inefficiency creates:

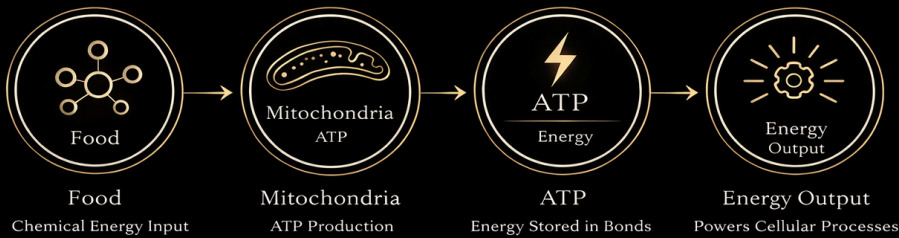
- Heat
- Free radicals
- Cellular stress

The more energy is processed the less usable energy it has

- Highly processed foods have very low energy left from all the processing
- Most foods are processed to give them a longer shelf life. This strips it of key nutrients and is replaced with chemicals

# ATP: The Energy Currency

## HOW ATP WORKS



ATP stores energy in chemical bonds  
 When ATP breaks down, energy is released  
 This energy powers cellular activity

### Efficient systems produce:

- ✓ Stable energy
- ✓ Less oxidative stress
- ✓ Better recovery

### Inefficient systems produce:

- ✓ Energy crashes
- ✓ Fatigue
- ✓ Brain fog

Carbohydrates, proteins, and fats are metabolized into usable energy through different biochemical pathways. Carbohydrates are broken down into glucose and rapidly converted into ATP via glycolysis, yielding about ~16-18 ATP per molecule. Fats are broken into fatty acids and oxidized in mitochondria through beta-oxidation, producing the most energy at roughly ~40-45 ATP per mol. Proteins are digested into amino acids that primarily support tissue repair, enzymes, and hormones, but can be converted into glucose or metabolic intermediates for energy, producing about ~16-18 ATP per mol.

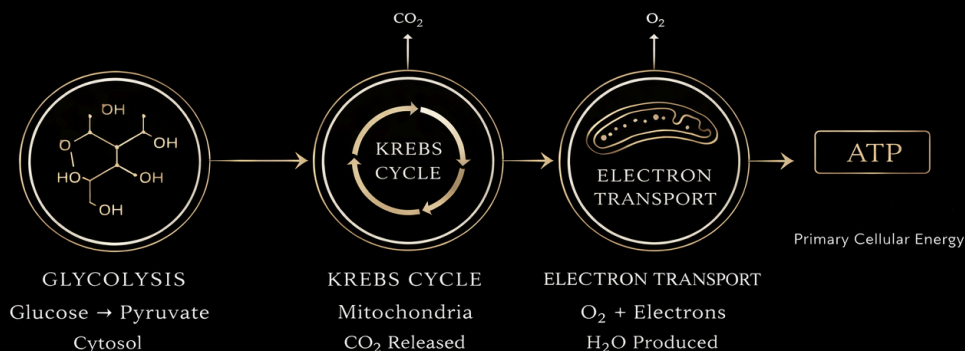
## HOW FOOD BECOMES ENERGY



- |  |   |   |
|--|---|---|
| <p><b>Quick Energy Fuel</b></p> <ul style="list-style-type: none"> <li>• Chains of sugar molecules</li> <li>• Found in grains &amp; plants</li> <li>• Rapid Energy availability</li> </ul> | <p><b>Structural Building Blocks</b></p> <ul style="list-style-type: none"> <li>• Broken into amino acids</li> <li>• Repair &amp; growth</li> <li>• Essential Body Functions</li> </ul> | <p><b>Long-Lasting Energy</b></p> <ul style="list-style-type: none"> <li>• Broken into fatty acids</li> <li>• Dense energy source</li> <li>• Produces the most ATP</li> </ul> |
|--|---|---|

Food is broken down into nutrients  
 Nutrients supply energy & structural components  
 Different nutrients support different biological needs

## CELLULAR ENERGY PRODUCTION



# Mitochondria and Oxidative Stress

Damaged Mitochondrion



Healthy Mitochondrion



When we don't utilize the energy that we've consumed it creates a negative feedback loop to the body.

By design the body stores excess nutrients for a later time when food is in short supply (Insulin).

After all the storage deposits are full - those "unused" nutrients leak oxidative stress in the mitochondria.

The stress is caused by highly reactive Oxygen molecules leaking into the cellular matrix and reacting with other molecules creating Oxidative stress.

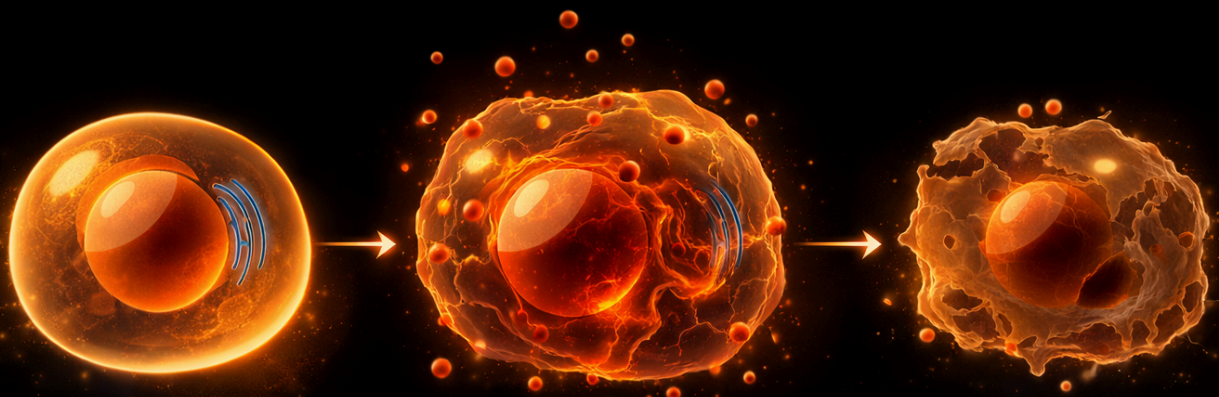
Oxidative stress has been linked to aging, cancer and numerous degenerative diseases. Free radical damage is one of the most heavily invested sciences as we try to combat aging.

Our body's natural defence system has antioxidants enzyme that combat this. However when the system is over worked it leads to more serious problems.

## Signs of Oxidative Stress

- Fatigue
- Brain fog
- Slow recovery
- Mood instability

## The inevitable truth about our Mitochondria



Normal Cell

Oxidative Stress

Free radicals damage cellular components

Cell Damage

Severe oxidative stress can lead to cell death

# Cellular Stress & Hormones

## Insulin

Released by the pancreas to regulate blood sugar by moving glucose from the bloodstream into cells for energy.

Refined & processed carbohydrates cause rapid insulin spikes, driving glucose into muscle for immediate use or into fat storage if the energy isn't needed.

Frequent consumption of highly processed foods can lead to insulin resistance, where cells respond less effectively to insulin and higher levels are required to control blood sugar.

Over time, this metabolic strain is linked to weight gain and an increased risk of type 2 diabetes.

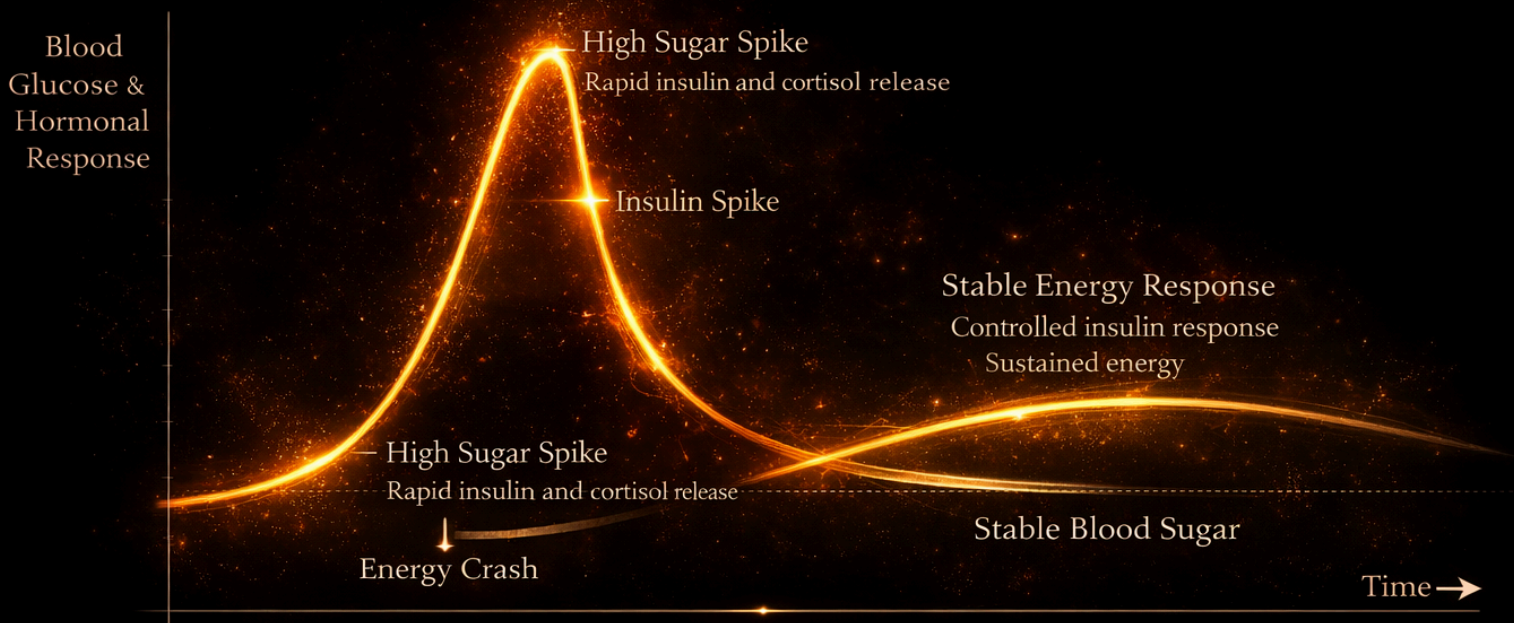
## Cortisol

Released by the adrenal glands to help the body respond to physical and metabolic stress.

Frequent blood sugar spikes and crashes, often driven by refined sugars & processed foods, place repeated metabolic stress on the body and can elevate cortisol levels.

Cortisol also regulates metabolism, immune function, and the sleep-wake cycle, acting as a key coordinator of the body's stress response.

When cortisol remains chronically elevated, it can disrupt hormonal balance, promote fat storage, impair recovery, and increase cellular stress and inflammation.



- Large spikes often lead to energy crashes
- Stable blood sugar supports sustained energy & nervous system balance
- Moderating insulin levels allows the body to access and burn stored fat for energy
- Insulin resistance keeps glucose circulating in the bloodstream, promoting greater fat storage and making fat loss more difficult.
- High insulin levels signal the body to store fat rather than burn it.
- Stress raises cortisol, which increases blood sugar and triggers additional insulin release.
- Chronic stress and frequent sugar spikes create a cycle of elevated cortisol and insulin, making fat metabolism increasingly difficult.

# The Remedy To Cellular Healing

## FASTING ADAPTATION TIMELINE

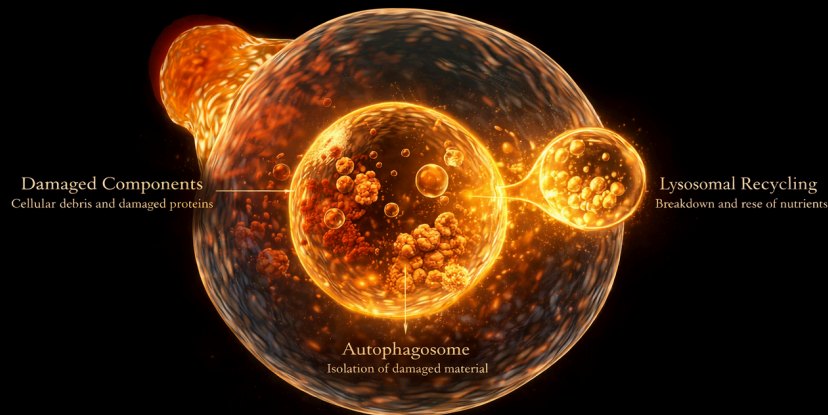
*\* Human autophagy timing data is sparse & depends on the individual but these are good estimates based on studies*



Fasting shifts the body from glucose dependence to fat-based energy production, supporting mitochondrial health.

- During fasting, blood glucose and insulin levels fall, and the body begins using stored glycogen for energy.
- Once glycogen is depleted, metabolism shifts toward fat oxidation, where fatty acids are converted in the liver into ketone bodies, an efficient fuel source for the brain and muscles.
- This metabolic switch supports mitochondrial efficiency and cellular repair processes such as autophagy, where damaged cellular components are recycled.
- Ketones provide a stable energy source when glucose is limited, reducing blood sugar fluctuations and metabolic stress.
- Training while fasted can increase Human Growth Hormone, helping preserve muscle tissue while supporting fat metabolism.

## AUTOPHAGY



Autophagy is the process by which cells remove damaged components  
Cellular material is enclosed, broken down & recycled into usable nutrients  
This process supports cellular repair & metabolic efficiency

# The Forgotten Organ

The nose is the body's first filtration system, Nasal passages contain mucous membranes & cilia that:

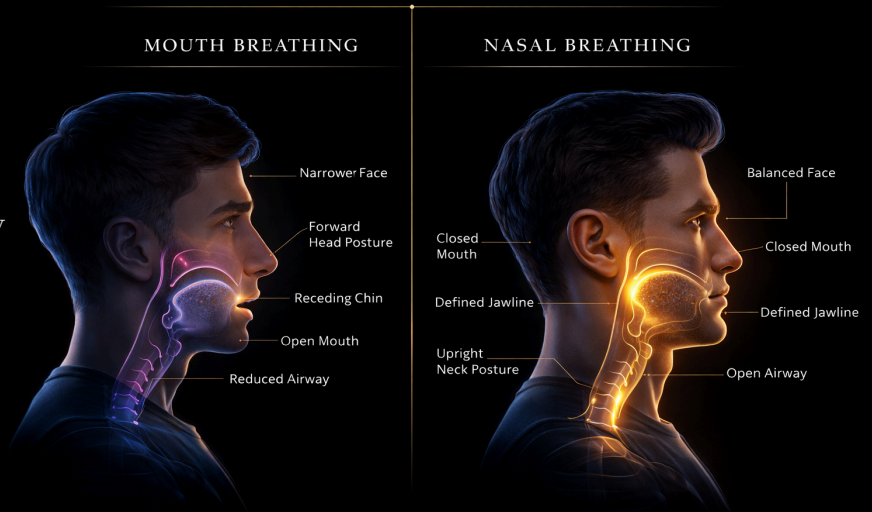
- Filter dust, bacteria, and pollutants from Oxygen (O<sub>2</sub>)
- Warm air to body temperature
- Add moisture to protect lung tissue
- Optimizes O<sub>2</sub> delivery, allowing lungs to extract more
- Improves respiratory efficiency & deep sleep
- Deep sleep triggers vasopressin release from the pituitary gland
- Vasopressin helps the body retain water & regulate hormones

## Mouth breathing wastes water

- Causes up to 40% greater water loss
- Leads to dehydration & reduced cellular efficiency

Poor breathing → poor sleep → disrupted hormonal balance

## BREATHING & FACIAL DEVELOPMENT



## NITRIC OXIDE & SYSTEMIC HEALTH



### CELLULAR PROTECTION

- Blood-Brain Barrier Integrity
- Respiratory Membrane Function
- Antioxidant Balance
- Anti-Inflammatory Effects
- Anti-Atherosclerotic Activity
- Microbiome Support

### SYSTEMIC PERFORMANCE

- Vascular Elasticity
- Gastrointestinal Integrity
- Stress Regulation
- Blood Pressure Regulation
- Antimicrobial Defense
- Cellular Growth Regulation

### LONGEVITY SUPPORT

- Anti-Aging Effects
- Antioxidant Activity
- Cellular Protection
- Anti-Carcinogenic Signaling

- Vascular Elasticity
- Gastrointestinal Integrity
- Stress Regulation
- Blood Pressure Regulation
- Antimicrobial Defense

## Nitric Oxide (NO)

- Found in the nasal pathway
- Enhances O<sub>2</sub> absorption in the lungs & blood circulation
- Supports immune defense
- Slow nasal breathing activates the parasympathetic nervous system
- Reduces stress hormone release
- Improves emotional regulation and focus
- Increases dopamine stability

## Lung capacity strongly predicts lifespan

- Research shows lung function is one of the strongest indicators of longevity
- Reduced lung efficiency is associated with increased disease risk
- O<sub>2</sub> powers cellular function & is used to produce energy
- O<sub>2</sub> binds to red blood cells and travels through arteries to tissues
- Carbon dioxide (CO<sub>2</sub>) is removed during exhalation
- CO<sub>2</sub> enables O<sub>2</sub> release & signals hemoglobin to release oxygen into tissues
- CO<sub>2</sub> signals hemoglobin to release O<sub>2</sub> into tissues
- Low CO<sub>2</sub> (from over-breathing or mouth breathing) reduces O<sub>2</sub> delivery



# THE THREE LAWS OF HUMAN ENERGY

ATP • INSULIN • CORTISOL • OXYGEN

## LAW 1

### ENERGY MUST ENTER THE SYSTEM



- The more a food is processed, the less usable energy it provides
- Ultra-processed foods are energy-depleted due to repeated refinement
- Processing for shelf life removes key nutrients
- Lost nutrients are often replaced with additives and synthetic chemicals

## LAW 2

### ENERGY MUST BE CONVERTED EFFICIENTLY



#### Carbohydrates

- Quick Energy

#### Proteins

- Structural & Functional

#### Fats

- Long-Lasting Energy

Efficient mitochondria = Stable energy

## LAW 3

### ENERGY MUST BE USED TO AVOID OXIDATIVE STRESS



- Develop a system where food is selected based on nutritional value
- Less is more when it comes to energy.
- If you know you're going to not be doing anything don't over-indulge
- Introduce fasting once or twice a week to initiate autophagy

## ENERGY MUST FLOW

Stable energy regulates dopamine naturally.



→ Food

→ ATP

→ Work

→ Repair



### 1. Select Food Based on Biological Value

- Prioritize nutrient density over calorie quantity
- Choose whole, minimally processed foods
- Ensure each meal supports mitochondrial function, hormonal stability, and recovery

• Eat with purpose, not impulse

Food is not entertainment.

It is a metabolic signal.

### 3. Introduce Structured Fasting

- Implement 16–24 hour fasting windows 1–2 times per week
- Allow insulin levels to fall
- Encourage fat oxidation and metabolic flexibility
- Support autophagy and cellular repair

Fasting is not deprivation.

It is a strategic metabolic reset.

### 5. Operate Within the Energy Cycle

- Input wisely
- Convert efficiently
- Use energy daily
- Allow structured recovery

When this cycle is maintained, energy remains stable.

When disrupted, stress accumulates.

### 2. Match Intake to Output

- Align food intake with energy expenditure
- Avoid excess consumption during low-activity days
- Reduce grazing and unnecessary snacking
- Allow natural hunger cycles to occur

Energy that is not used becomes stored.

Chronic surplus leads to metabolic stress.

### 4. Protect Hormonal Stability

- Minimize frequent insulin spikes
- Avoid highly refined carbohydrates
- Stabilize blood sugar with protein and healthy fats
- Support natural cortisol rhythms through sleep and stress regulation

Stable hormones = Stable energy output.

### 6. Regulate Oxygen Intake

- Slow and control respiratory rate
- Avoid chronic mouth breathing
- Use breath to regulate stress response (1–2x day)
- Support nitric oxide production through nasal airflow

Breath is not passive.

It is a metabolic regulator.

Every phase must be respected & intentional

Energy must flow

That is the energy regulation framework

# 14-DAY ENERGY STABILIZATION PROTOCOL

Stabilize. Convert. Use. Recover.

INPUT

CONVERT

USE

RECOVER

RECOVER

Day 1

Day 5-7

Day 8-11

Days 8-11

Day 12-14

## PHASE 1 (Days 1-4)

### Stabilize Blood Sugar

- ✓ Eat protein at every meal
- ✓ Reduce refined carbohydrates
- ✓ Eliminate grazing.
- ✓ Drink water consistently

#### Goal:

Reduce insulin spikes.  
Create stable energy.

## PHASE 2 (Days 5-7)

### Match Intake to Output

- ✓ Eat based on activity level
- ✓ Avoid oversating on low-movement days
- ✓ Begin 14-16 hour fasting window (1-2x this week)

#### Goal:

Train metabolic flexibility

## PHASE 3 (Days 8-11)

### Improve Conversion Efficiency

- ✓ Prioritize whole foods
- ✓ Increase daily movement
- ✓ Lift weights or resistance train

#### Goal:

Support mitochondrial function.  
Improve oxygen efficiency.

## DAILY CHECKLIST

- Protein with each meal
- No processed snacks
- 8k-10k steps
- Nasal breathing session
- Sleep before midnight
- No late-night scrolling

## ENERGY SCORECARD

Energy Stability (1-10) • Focus (1-10)  
Focus (1-10) • Mood (1-10)  
Sleep Quality (1-10) • Stress Level (1-10)

### Weekly Reflection Prompt:

- What increased my energy?
- What drained it?
- What will I adjust next week?

## BREATH TRAINING SCRIPT

- ✓ After brushing teeth. — 5 minutes breath
- ✓ After lunch — 10 minute walk.
- ✓ Before bed — no screens

## ENERGY SCORECARD

Energy Stability (1-10)  
Focus (1-10)  
Sleep Quality (1-10)

### Weekly Reflection Prompt:

- What increased my energy?
- What drained it?
- What will I adjust next week?



## HABIT STACKING SYSTEM

- ✓ After brushing teeth. — 5 minutes brushing
- ✓ After lunch — 10 minute walk.
- ✓ Before bed — no screens

Energy must flow.

When input, conversion, usage, and recovery align  
dopamine stabilizes naturally.