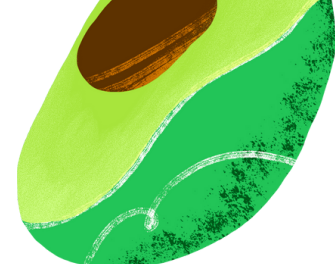
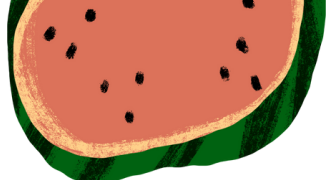
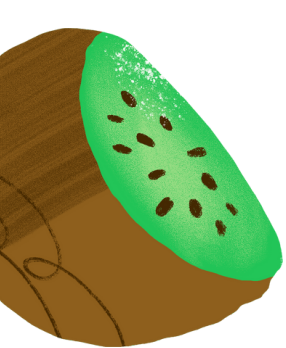


WALTER BEE MELON



DESIGNED BY: CROCHET BY LANDRY



Materials

Hook: 4.5MM or 5.0MM
Depending on your tension!

Scissors & Yarn Needle

Safetyt Eyes (20 or 25MM)

Polyfil Stuffing

Yarn: Sweet Snuggles or Posh Purl

Rose - Color A

White - Color B

Green - Color C

Black - Color D

Abbreviations

SC - Single Crochet

MR - Magic Ring

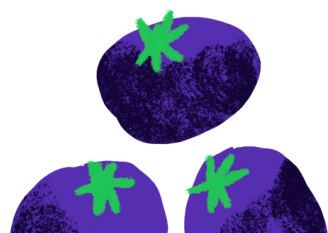
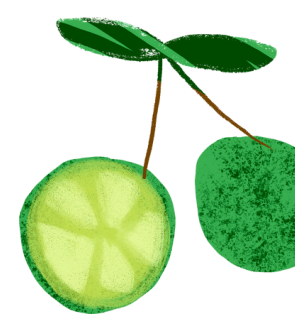
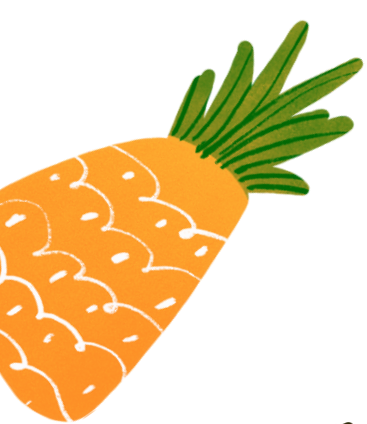
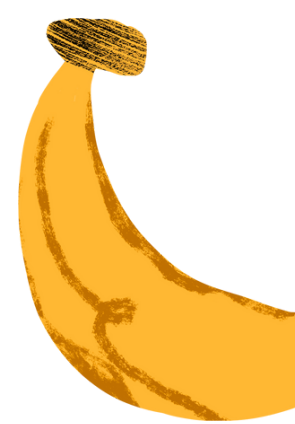
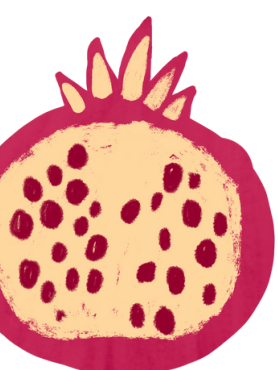
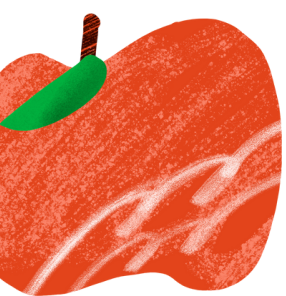
CH - Chain

SLST - Slip Stitch

BLO - Back Loop Only

INV DEC - Invisible Decrease

FO - Fasten Off





Join and CH 1 at the end of each round!

Start with Color A,

Row 1: 8 SC in MR, pull closed, (8)

Row 2: INC in each stitch around, (16)

Row 3: SC in the first, INC in the next, (24)

Row 4: SC in each stitch around, (24)

Fasten Off with Color A and Join Color B

Row 5 & 6: SC in each stitch around (2 rounds), (24)

Fasten Off with Color B and Join Color C

Row 7-10: SC in each stitch around, (3 rounds), (24)

Add Safety Eyes between rounds 2 & 3, place mouth between eyes

Stitch on black flecks on face around face

Row 11: SC in the first, and INV DEC in the next 2 STS, repeat around, (16)

Stuff project

Row 12: INV DEC around, (8)

Fasten Off, and close hole and weave in ends

Wings

Start with MR,

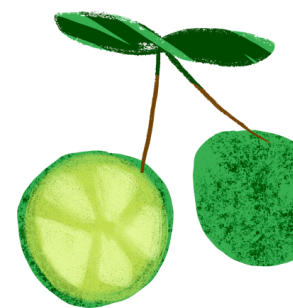
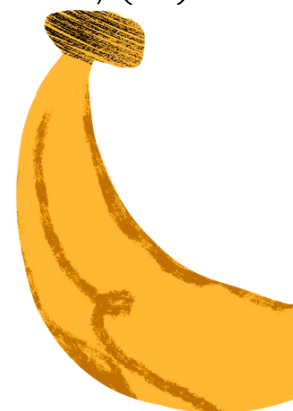
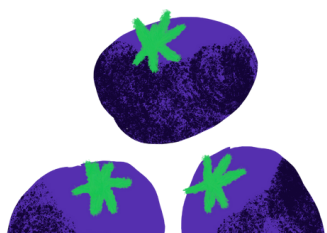
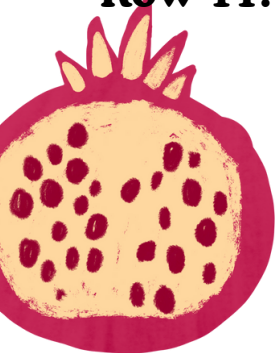
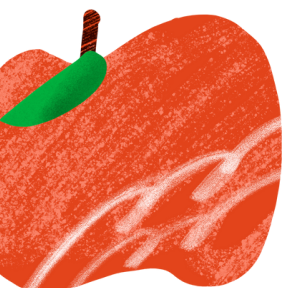
Row 1: 6 SC in MR, (6)

Row 2: INC in each ST around, (12)

Fasten Off and Leave a tail for sewing,

Sew your wings on top of your project near the white line, sew both wings on,

Fasten Off and Weave in all ends



Congratulations your Project is Finished!!



This pattern and photos are property of Crochet by Landry. You may not redistribute this pattern or photos. Please feel free to sell the finished products from this pattern. Please make sure to give credit to the creator of the pattern and tag me or link my shop!