

# Angels & Crystals:

## A Guide to Divine Connection



Unlock the Power of **Angelic & Crystal Energy**  
to Strengthen Your Intuition

© 2025 HEARTFELT FREEDOM LLC | ALL RIGHTS RESERVED  
THIS GUIDE IS FOR PERSONAL USE ONLY AND MAY NOT BE COPIED, SHARED, OR REPRODUCED WITHOUT PERMISSION.  
WWW.HEARTFELTFREEDOM.COM

[WWW.HEARTFELTFREEDOM.COM](http://WWW.HEARTFELTFREEDOM.COM)



# WELCOME TO THIS SACRED GUIDE

Welcome to this sacred guide, where you'll unlock the divine energy of Archangels and crystals to enhance your intuition, healing, and connection to the higher realms.

Whether you're a beginner or someone looking to deepen your practice, this guide will provide you with the knowledge to tap into the extraordinary energy of angels and crystals.

✨ THIS GUIDE IS JUST THE BEGINNING... ✨  
A DEEPER JOURNEY WITH ANGELS & CRYSTALS IS COMING IN 2026.  
STAY CONNECTED FOR MEDITATIONS, ANGEL WISDOM, AND CRYSTAL TEACHINGS IN THE MEANTIME.



## ABOUT THE AUTHOR

Jessica Brown is a spiritual teacher, energy healer, and certified Past Life Hypnosis Regression Practitioner devoted to helping humanity awaken to higher consciousness.

As the founder and creator of the Heartfelt Freedom Method, Jessica guides empaths, lightworkers, and spiritual seekers to reconnect with their intuition, heal emotional blocks, and embody their divine purpose.

Her teachings blend the wisdom of the angelic and crystal realms with grounded spiritual practices, empowering individuals to release fear, trust their soul's guidance, and live with clarity, freedom, and inner peace.

Rooted in compassion and authenticity, Jessica's mission is to provide transformative tools that support awakening souls in their journey of remembrance, helping them live in alignment with their truth, purpose, and divine connection to Source.

✨ THIS GUIDE IS JUST THE BEGINNING... ✨  
A DEEPER JOURNEY WITH ANGELS & CRYSTALS IS COMING IN 2026.  
STAY CONNECTED FOR MEDITATIONS, ANGEL WISDOM, AND CRYSTAL TEACHINGS IN THE MEANTIME.



# UNDERSTANDING THE ANGELS

## What Are Angels?

- **Brief Overview:** Angels are divine messengers who bridge the realms of spirit and humanity, serving as loving channels of guidance, healing, and protection. Their presence reminds us that we are never alone on our journey, that divine support and unconditional love are always within reach. Archangels, the celestial leaders among angels, hold vast light frequencies and serve as extensions of the Divine Source itself. They work together in perfect harmony to uplift humanity, balance the energies of the Earth, and help us awaken to our higher purpose. Each Archangel carries a unique vibration, mission, and spiritual gift, whether it's healing, protection, love, or transformation. They are our allies in ascension, guiding us through both our challenges and our breakthroughs. When we call upon them, their energy meets us exactly where we are, offering comfort, insight, and divine strength to help us align with our soul's highest path.
- **How to Connect with Angels:** Connecting with angels is a sacred yet simple practice, a gentle invitation from the heart. Begin by creating a quiet moment of stillness: take a few deep breaths, soften your energy, and allow yourself to become fully present. You might light a candle, hold a crystal, or simply place your hand over your heart. Then, speak to your angels, either silently or aloud, asking for their guidance, clarity, or comfort in whatever way you need most. Trust that your message has been received. Angels often respond through intuitive nudges, synchronicities, sensations, or signs in the physical world such as feathers, songs, or repeating numbers. Their love for you is infinite, and their guidance is always gentle and aligned with divine timing. Remember, angels honor your free will, they await your invitation and joyfully respond when you open your heart to their presence.



# CONNECTING WITH THE ANGELIC REALM THROUGH CRYSTALS

Crystals hold a sacred connection between the Earth and the Universe, serving as radiant conduits that unite the physical and the spiritual. Born from the heart of Mother Earth and infused with cosmic light, they bridge the material and ethereal realms with pure intention and divine design. Angels, as beings of celestial light, are attuned to these same universal frequencies.

When you work with crystals in your spiritual practice, you open a luminous channel for divine communication, one where angelic guidance, healing, and insight flow with ease and grace. Each crystal is a living vibration, holding within it the wisdom of the Earth and the resonance of the cosmos. When we connect with these crystalline allies, we align our own energy field to higher frequencies, allowing us to sense, receive, and embody more of the angelic realm's subtle energies.

## How Crystals Amplify Your Intuition

Every crystal carries its own unique energetic signature, a vibration that interacts with your aura, chakras, and subtle body to awaken clarity, healing, and transformation. As you hold or meditate with a crystal, it harmonizes with your personal frequency, clearing blockages and amplifying your intuitive senses. Over time, this practice strengthens your ability to trust your inner guidance, deepens your spiritual awareness, and opens your heart to divine messages with greater ease.

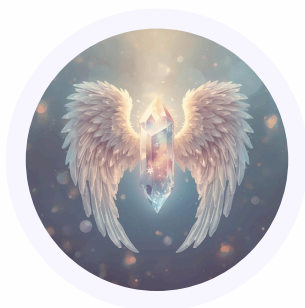
Crystals act as mirrors to the soul, reflecting back what you are ready to heal and helping you embody more of your authentic light. By attuning to their frequencies, you raise your vibration and step into alignment with your higher self

## The Power of Pairing Crystals with Angels

When crystals and angelic energies are combined, a sacred synergy is created, one of pure love, light, and divine harmony. Crystals help anchor angelic frequencies into the physical world, while angels infuse crystals with higher spiritual resonance. This partnership magnifies your energy work, deepens meditation, and enhances prayer or healing rituals.

Each angel naturally resonates with certain crystals whose colors and vibrations reflect their divine mission. For example, Archangel Michael's deep blue ray aligns beautifully with Azurite's energy of truth and protection. By pairing crystals with the corresponding Archangel, you create a focused energetic bridge, allowing you to connect more fully with that angel's frequency and guidance.

Together, crystals and angels form a luminous team, grounding heaven into Earth and awakening the divine potential within you. Working with them invites balance, healing, and the realization that you, too, are a bridge between worlds: human and divine, Earth and sky, body and spirit.

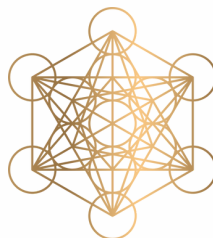




## TOP 5 ARCHANGELS FOR SPIRITUAL GUIDANCE & HEALING

- **Archangel Michael:** is a leader of the Angelic Realm, dedicated to transforming the Earth into a place of peace, harmony, and light. As the radiant protector and divine guardian of truth, his mission is to guide humanity toward higher consciousness and spiritual freedom. His strength is unmatched, yet his power is rooted in unconditional love and divine purpose. He stands as a beacon of courage, clarity, and integrity, cutting through fear and illusion with his sword of light. Michael shields you from harm, clears away negative energies, and fortifies your spirit so you may walk boldly in alignment with your highest self. His energy empowers you to stand tall in your authenticity, speak your truth with confidence, and move through life with unwavering faith. Whether you seek spiritual protection, energetic purification, or the courage to fulfill your divine purpose, Archangel Michael's presence is steadfast. When called upon with an open heart, he surrounds you with heavenly light, reminding you that you are safe, guided, and eternally supported in your sacred mission.
- **Archangel Ariel/Aria:** is a powerful warrior and guardian of Mother Earth, embodying both fierce protection and radiant grace. Her name, meaning “lion” or “lioness,” symbolizes the perfect harmony of courage and compassion. She stands alongside Archangel Michael, forming a divine alliance of strength and light, shielding humanity and the planet through love-infused power. Aria's presence reminds you that true strength arises from the balance of inner peace and divine confidence, the merging of power and heart. She calls you to rise with bravery, to walk your path with authenticity, and to honor the cycles of nature and spirit. When you connect with her energy, you awaken the courage to heal with gentleness, to lead with compassion, and to fully trust your sacred purpose.

- **Archangel Metatron:** Metatron is gentle, kind, and understanding. He has immense patience for all incarnated souls. His purple energy is full of love. Metatron is always ready to expand your consciousness, strengthen your protection, and help you unlock divine knowledge. Trust in the sacred symbols and geometries Metatron offers, knowing they guide you toward transformation and divine purpose. With Metatron's energy of love and clarity, continue to embrace his support for protection and spiritual guidance as you move forward. You are always empowered by the light within you, and Metatron walks beside you every step of the way.
- **Archangel Raphael:** "A healer among healers," As you continue to connect with Archangel Raphael, remember that his healing light is always available to you. His presence is gentle yet powerful, offering love, guidance, and restoration to every aspect of your being. Whether you seek physical healing, emotional balance, or spiritual renewal, Raphael is here to guide you toward wholeness. Trust in his ability to heal even the deepest wounds, and know that you are always surrounded by his compassionate energy. Allow Raphael's gentle whispers and healing light to guide you toward a path of peace, health, and vitality. He is always ready to help you, whenever you call upon him.
- **Archangel Chamuel:** As the Bringer of Peace, he is always available to guide you through moments of emotional turmoil or relationship challenges. His soft pink light, often accompanied by the gentle energy of a white cat, brings comfort, healing, and balance into your life. Chamuel reminds you of the power of love in creating harmony, not just within yourself, but in the world around you. Call upon him whenever you need guidance, peace, or a reminder of the deep love that exists within and between all things. His loving embrace will help you find the path to peace, understanding, and joy





## CRYSTAL PAIRINGS WITH ARCHANGELS

**Angelite & Archangel Michael:** Angelite is a soothing, peaceful crystal that gently opens the doorway to higher realms, making it a powerful companion for angelic communication. Known as a stone of divine connection, it carries the vibration of serenity, compassion, and trust, allowing you to feel the loving presence of the Angelic Realm more deeply. When paired with Archangel Michael, Angelite becomes a shield of light, offering protection, guidance, and reassurance that you are never alone. This crystal strengthens your intuition and your ability to receive clear messages from your angels, while also bringing a sense of calm during times of stress. Angelite is one of the most powerful stones for activating angelic communication and embodying the love and protection that flows directly from Source through the angelic realms.

**Aquamarine & Archangel Ariel/Aria:** Aquamarine, often called the “Stone of Courage,” radiates a gentle yet powerful energy that encourages peace, clarity, and emotional balance. Its soft blue hue mirrors the tranquil essence of the sea, calming fear and soothing the soul. When connected with Archangel Aria, the angel of nature, courage, and manifestation, aquamarine becomes a supportive ally for speaking your truth with grace and confidence. This crystal enhances communication skills, particularly in situations where honesty and emotional expression are required, such as speaking in public or having heartfelt conversations. Aquamarine also helps dissolve resistance, encourages self-expression, and reminds you that your voice is a divine instrument of love and truth. By working with this stone, you allow Archangel Ariia’s energy to guide you into authenticity, courage, and alignment with your higher self.

**Amethyst & Archangel Metatron:** Amethyst is a powerful crystal for developing intuition, expanding consciousness, and awakening spiritual wisdom. It creates a bridge to higher realms, making it easier to receive divine guidance and align with your soul's purpose. When paired with Archangel Metatron, the angel of sacred geometry, wisdom, and spiritual ascension, Amethyst amplifies your connection to universal truth and helps you integrate divine knowledge into your daily life. This crystal is also deeply calming, offering relief from stress and mental clutter while sharpening your focus and clarity. By working with Amethyst, you invite Metatron's energy to activate your inner wisdom, awaken your higher consciousness, and illuminate your spiritual path.

**Malachite & Archangel Raphael:** Malachite is a powerful stone of transformation and healing, carrying the vibration of deep renewal and growth. Its rich green energy resonates with the heart chakra, helping to release old wounds, toxic patterns, and negative beliefs that weigh you down. Malachite doesn't just absorb negativity, it transforms it, clearing space for new vitality, emotional breakthroughs, and spiritual expansion. When paired with Archangel Raphael, the angel of healing, wholeness, and restoration, Malachite becomes an extraordinary ally for physical, emotional, and spiritual healing. It amplifies all energies, guiding you to courageously face what needs to be released while opening your heart to the abundance of health and harmony available to you.

**Rose Quartz & Archangel Chamuel:** Rose Quartz, the beloved "Stone of Love," radiates gentle, nurturing energy that softens the heart and opens you to unconditional love. Its soothing vibration activates the heart chakra, helping you cultivate compassion, forgiveness, and kindness toward yourself and others. This crystal is a balm for emotional healing, dissolving tension and heartache while encouraging deep self-love and acceptance. When paired with Archangel Chamuel, the angel of love, peace, and harmonious relationships, Rose Quartz becomes a divine tool for attracting new love, strengthening existing connections, and infusing your life with the beauty of love in all its forms. It is a constant reminder that you are held in love by the Universe and that every relationship, starting with the one you have with yourself, can be infused with divine harmony.





# 5 SIMPLE WAYS TO WORK WITH ANGELS & CRYSTALS

## 1

### **Meditation: Connecting with Archangels & Crystals**

Find a quiet space and hold your chosen crystal in your hand or over your heart. Take a few deep breaths, allowing your body to relax and your mind to become still. Silently call upon the Archangel connected to your crystal, inviting their light and guidance to surround you. Feel the crystal's energy merge with your own, soft, peaceful, and radiant.

Remain open to any sensations, images, or intuitive messages that arise. When you feel complete, thank the Archangel for their presence and envision their light surrounding you in protection and love.

- **Angelite & Archangel Michael** – A sacred combination for divine protection, clarity, and unwavering faith. Angelite's soft blue vibration harmonizes with Michael's radiant blue light, creating a shield of strength and serenity around you. Call upon Archangel Michael to cut away fear, doubt, and negative energy, helping you stand tall in truth and divine confidence.
- **Aquamarine & Archangel Ariel/Aria** – This pairing awakens courage, intuition, and harmony with the natural world. Aquamarine's tranquil energy reflects the gentle strength of Archangel Aria, guiding you to find balance between inner peace and bold action. Call on Aria to help you reconnect with nature, embody compassion, and trust your personal power with grace.

- **Amethyst & Archangel Metatron** – A powerful duo for activating spiritual wisdom, clarity, and higher consciousness. Amethyst enhances intuition and connects you to your crown chakra, while Archangel Metatron helps you integrate divine light into daily life. Together, they expand your awareness, open your spiritual vision, and align you with your soul’s ascension path.
- **Malachite & Archangel Raphael** – A deeply healing combination for emotional release and heart restoration. Malachite’s vibrant green rays cleanse the heart chakra, while Archangel Raphael’s emerald light brings peace, renewal, and holistic healing. Call upon Raphael to dissolve emotional blocks, release old wounds, and restore harmony to mind, body, and spirit.
- **Rose Quartz & Archangel Chamuel** – The essence of unconditional love, compassion, and inner peace. Rose Quartz radiates gentle pink light that mirrors Archangel Chamuel’s vibration of divine love. Together, they open your heart to forgiveness, attract harmonious relationships, and help you remember that love is your truest nature.



## Daily Affirmations: Infusing Energy with Intention

Affirmations are a powerful way to align your thoughts, emotions, and energy with divine truth. When spoken with presence and love, they reprogram your energy field to vibrate at higher frequencies of peace, confidence, and harmony.

By combining affirmations with your crystal and Archangel connection, you amplify both their energies, allowing each statement to resonate through your heart and into your daily reality.

Take a moment each day to hold your chosen crystal. Close your eyes, take a deep breath, and feel its subtle vibration harmonizing with your own. As you speak your affirmation, let the words flow through you, not just as statements, but as living energy. Imagine the Archangel's light surrounding you as their message integrates into your being.

- **Angelite & Archangel Michael** – "I am divinely protected, strong, and guided by truth."
- **Aquamarine & Archangel Ariel/Aria** – "I flow with courage, grace, and trust in the divine path ahead."
- **Amethyst & Archangel Metatron** – "I open myself to divine wisdom and higher consciousness."
- **Malachite & Archangel Raphael** – "I welcome deep healing, renewal, and balance into my life."
- **Rose Quartz & Archangel Chamuel** – "I am worthy of love, and I radiate compassion to myself and others."

After repeating your affirmation several times, pause to feel its vibration within you. Let it become more than words, a frequency that shifts your mindset and expands your connection to the Divine. Over time, this practice strengthens your intuition, nurtures emotional balance, and anchors your intentions into everyday life.



## Energy Cleansing: Keeping Your Crystals Clear

Just as we cleanse our energy through rest, meditation, and intention, crystals also need regular cleansing to maintain their high vibration and purity. Over time, they can absorb and hold energetic residue from environments, emotions, and interactions. By keeping your crystals clear, you allow them to fully radiate their divine frequencies and strengthen your connection with the angelic realm.

### Here are simple, sacred methods for cleansing and recharging your crystals:

- **Sunlight:** Restores vitality and strength. Ideal for energizing Malachite and Aquamarine, sunlight infuses these stones with warmth and confidence. Limit exposure to a few hours to preserve their color and luster.
- **Moonlight:** Offers gentle, nurturing energy. Place Amethyst and Rose Quartz under the light of the full moon to deeply cleanse and realign their frequencies. Moonlight restores emotional harmony and spiritual clarity.
- **Sage/Palo Santo:** Clears stagnant or heavy energy. Pass Angelite and Amethyst through the rising smoke, allowing the purifying element of air and fire to renew their vibration. Set the intention that all energies not aligned with love and light are released.
- **Sound Healing:** Use singing bowls, bells, or chimes to restore resonance in all crystals. The sound waves sweep through each stone, rebalancing its frequency and elevating its light vibration.
- **Selenite:** Known as the “liquid light” crystal, Selenite has the unique power to cleanse and recharge all other stones. It restores harmony, clears negativity, and amplifies divine energy. Keep a Selenite wand or plate in your sacred space or near your other crystals to maintain continuous energetic balance. Selenite itself never needs cleansing and is one of the most essential crystals to have in your home, it keeps your space bright, clear, and protected.
- **Call on Archangels:**
  - Archangel Michael – to remove any lingering negativity and cut cords of fear.
  - Archangel Metatron – to realign and elevate your crystal’s frequency to divine order.
  - Archangel Raphael – to infuse your crystals with renewed healing light and restorative energy



## Dream Guidance: Receiving Angelic Messages

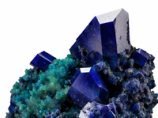
Dreams are sacred portals where the veil between the physical and spiritual realms becomes thin. During sleep, your conscious mind rests, allowing your higher self and the angels to communicate with greater ease. By setting an intention before bed and pairing it with the energy of your crystals, you open a channel for divine messages, healing, and intuitive insight to flow effortlessly through your dreams.

Before you go to sleep, hold your chosen crystal in your hand or place it beneath your pillow or on your nightstand. Take a few slow breaths and invite the corresponding Archangel to guide you through the night. Ask for clarity, healing, or any specific insight you need at this time. As you drift into rest, imagine a soft light surrounding you, the combined energy of your crystal and angel forming a gentle cocoon of love and protection.

When you awaken, take a moment to record your dreams or impressions in a journal. Even subtle symbols, colors, or emotions can hold powerful guidance from the angelic realm. Over time, you'll begin to recognize patterns and deeper messages meant to support your soul's evolution.

- **Angelite & Archangel Michael** – Protection from nightmares and psychic disturbance, clarity of spiritual truth within dreams.
- **Aquamarine & Archangel Ariel/Aria** – Strengthens intuitive dreaming, enhances connection with spirit animals and the elemental realms.
- **Amethyst & Archangel Metatron** – Activates vivid spiritual downloads, higher wisdom, and lucid awareness within the dream state.
- **Malachite & Archangel Raphael** – Encourages emotional release and deep heart healing during sleep; supports the restoration of inner peace.
- **Rose Quartz & Archangel Chamuel** – Fills your dreams with unconditional love, compassion, and gentle emotional healing from the past.

By consciously working with these crystal-angel pairings, you transform your dream time into a sacred space for divine communion, a nightly journey of healing, guidance, and remembrance of your true light.



## Intuitive Whisper: Trusting Your Inner Wisdom

Your intuition is the quiet voice of your soul, the sacred bridge between your human awareness and divine guidance. It often speaks softly, through subtle feelings, sensations, or inner knowings that arise when you pause and listen. The angels communicate through this intuitive channel, guiding you toward the energies, crystals, and colors that will best support you in each moment.

Before choosing your crystal or calling upon an Archangel, take a deep breath and tune into your heart. Ask yourself, “What energy do I need today?” Then, without overthinking, allow your eyes or your hand to be drawn to a specific crystal. Trust that your intuition, your inner whisper is being guided by divine intelligence.

- If you feel anxious, fearful, or unsafe, reach for **Angelite** and call on **Archangel Michael**. His protective light will surround you, cutting away cords of fear and restoring peace and clarity to your energy field.
- If you seek confidence, self-expression, or emotional strength, choose **Aquamarine** and connect with **Archangel Aria**. She will open your throat chakra, helping you speak your truth with grace and courage.
- If you need mental clarity, focus, or spiritual insight, work with **Amethyst** and **Archangel Metatron**. Their combined energy clears mental fog, activates higher awareness, and strengthens your connection to divine wisdom.
- If you're healing physically, emotionally, or energetically, use **Malachite** and ask **Archangel Raphael** to fill you with his emerald-green light of renewal and balance.
- If you're calling in love, forgiveness, or harmony, hold **Rose Quartz** and invite **Archangel Chamuel** to open your heart, helping you embrace compassion and self-acceptance.

Each crystal and Archangel you feel drawn to carries a specific vibration that meets your needs exactly where you are. Trust that you cannot choose wrong, your soul always knows what it needs. The more you listen to your intuitive whisper, the stronger your inner guidance becomes, leading you naturally toward balance, clarity, and divine alignment.





# READY TO DEEPEN YOUR SPIRITUAL JOURNEY?

This is just the beginning! The Angels & Crystals Guide you're holding is your first step into a world of divine connection, angelic wisdom, and crystal energy.

✨ **Coming in 2026** ✨

The **Angels & Crystals Program** — a transformative journey to awaken your intuition and strengthen your divine connection. Explore the sacred partnership of 15 Archangels and 40+ crystals as you learn to align your energy, receive angelic guidance, and embody your highest light.

This heart-centered program blends angelic wisdom, crystal healing, and spiritual practices to help you live with clarity, confidence, and purpose — guided by the radiant support of the angelic realm.

**Until then, stay connected so you don't miss the magic:**

- ✨ Stay subscribed to my emails for angel guidance & updates
- ✨ **Join me on YouTube** for weekly meditations, energy updates & crystal teachings
- ✨ Watch for sneak previews as I create the program

YOUR ANGELS AND CRYSTAL ALLIES ARE ALWAYS BESIDE YOU.  
TRUST THE PROCESS, EMBRACE THE GUIDANCE, AND LET YOUR LIGHT SHINE.

*With love and blessings,  
Jessica*