

Download and Install VMware Workstation:

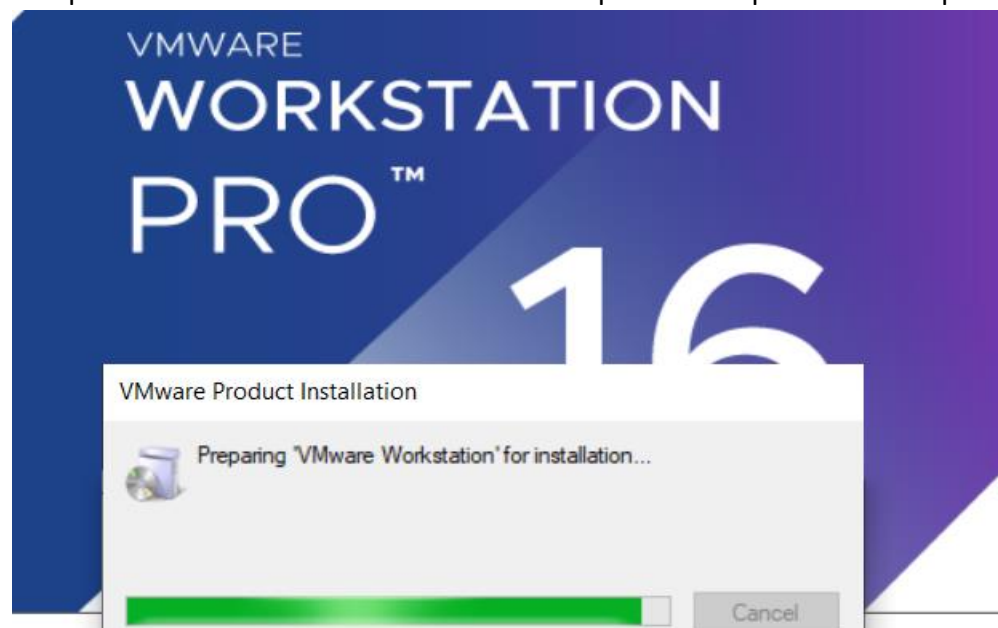
VMware is a product that allows users to install and run virtual machines on their host computers. To install VMWare, download the installation packages from their download page <https://www.vmware.com/mena/products/workstation-pro/workstation-pro-evaluation.html> VMware Workstation Pro gives a user more functionality and control but requires license purchase. Register it with this Key: **ZF3R0-FHED2-M80TY-8QYGC-NPKYF**



Workstation 16 Pro for Windows

✓ Download Now »

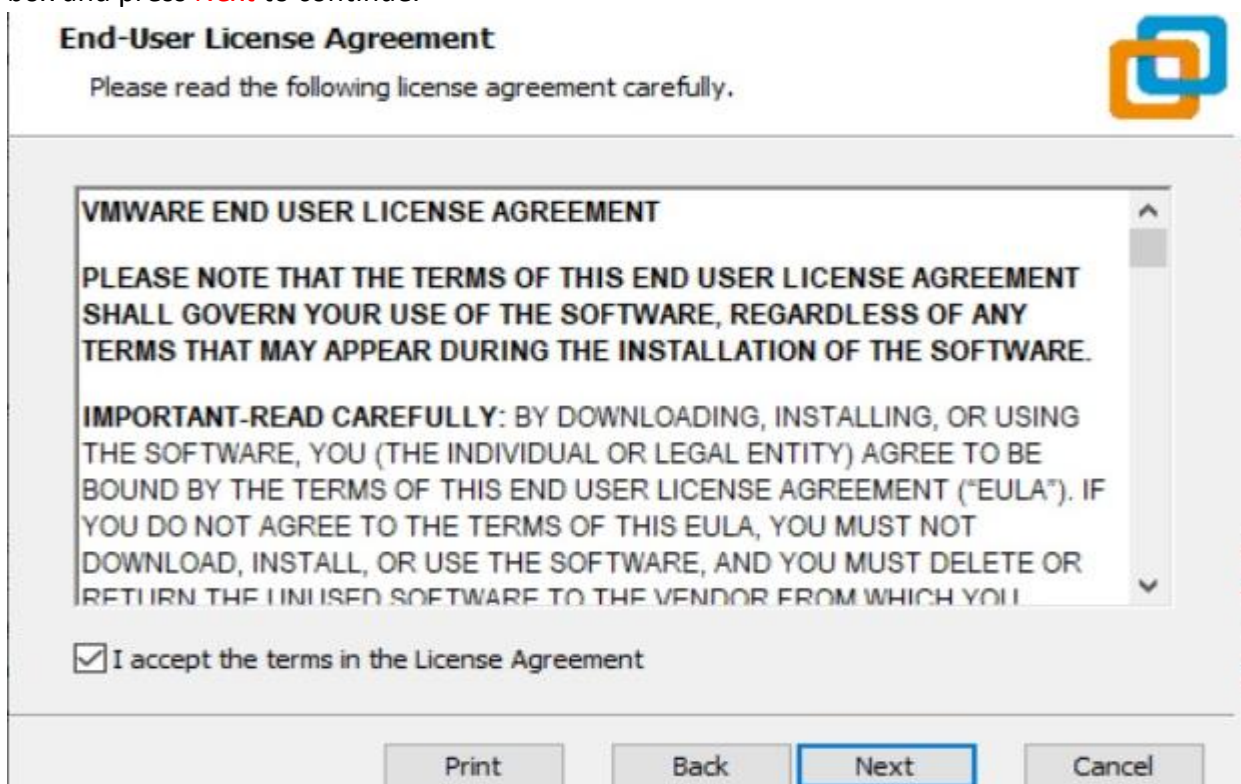
To install VMware on Windows, double click the installation file and follow the instructions to complete the installation. Click **Next** at all steps until the process is completed.



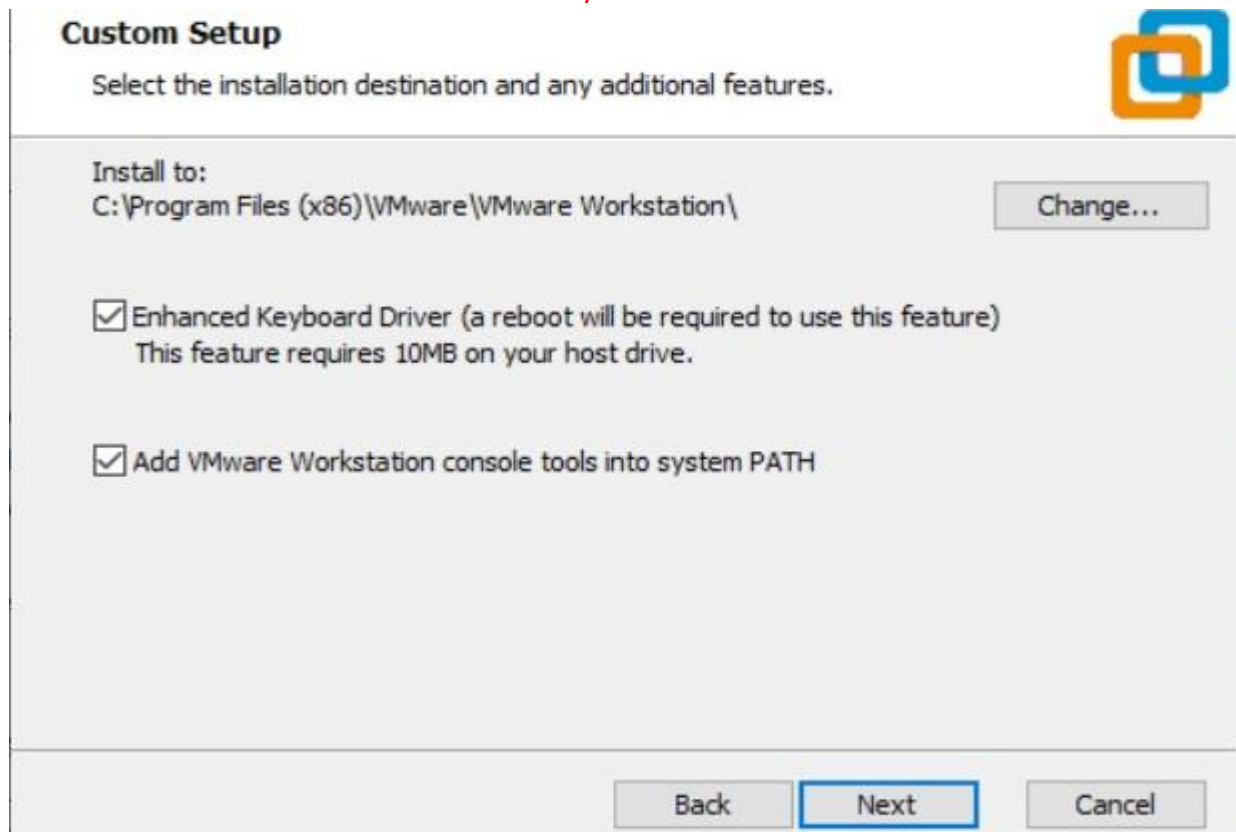
Now you will see VMware Workstation setup wizard dialog box. Click **Next** to continue.



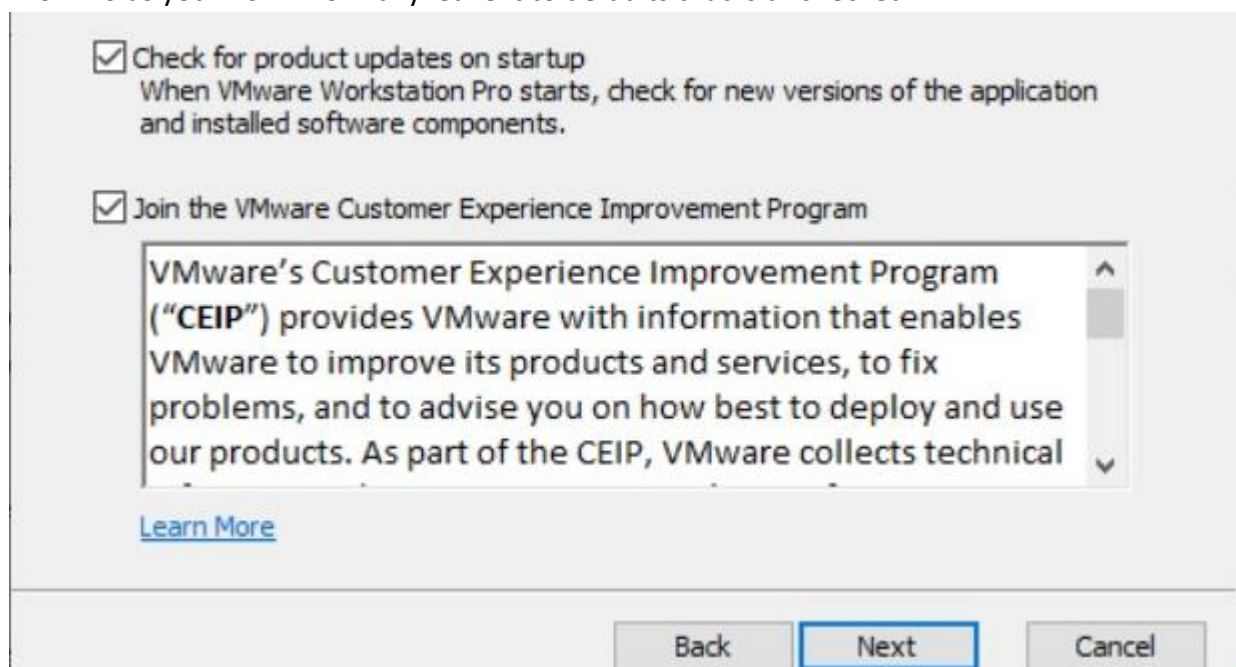
End User License Agreement dialog box. Check "**I accept the terms in the License Agreement**" box and press **Next** to continue.



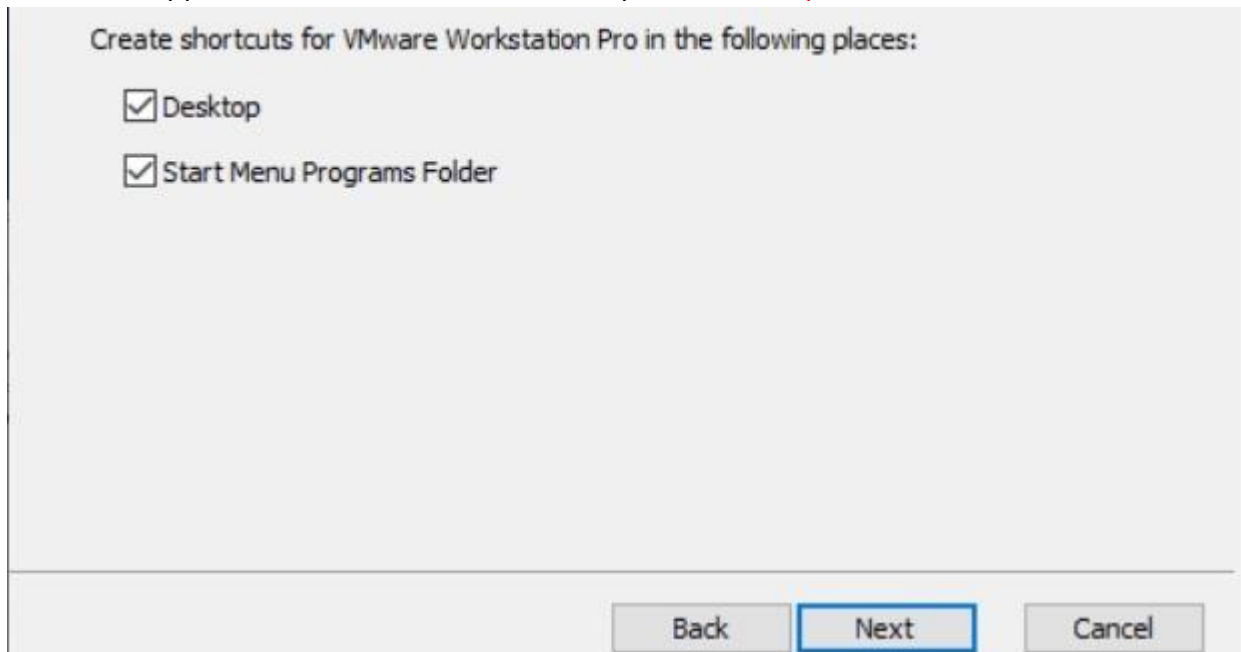
Select the folder in which you would like to install the application. There is no harm in leaving the defaults as it is. Also select **Enhanced Keyboard Driver** check box.



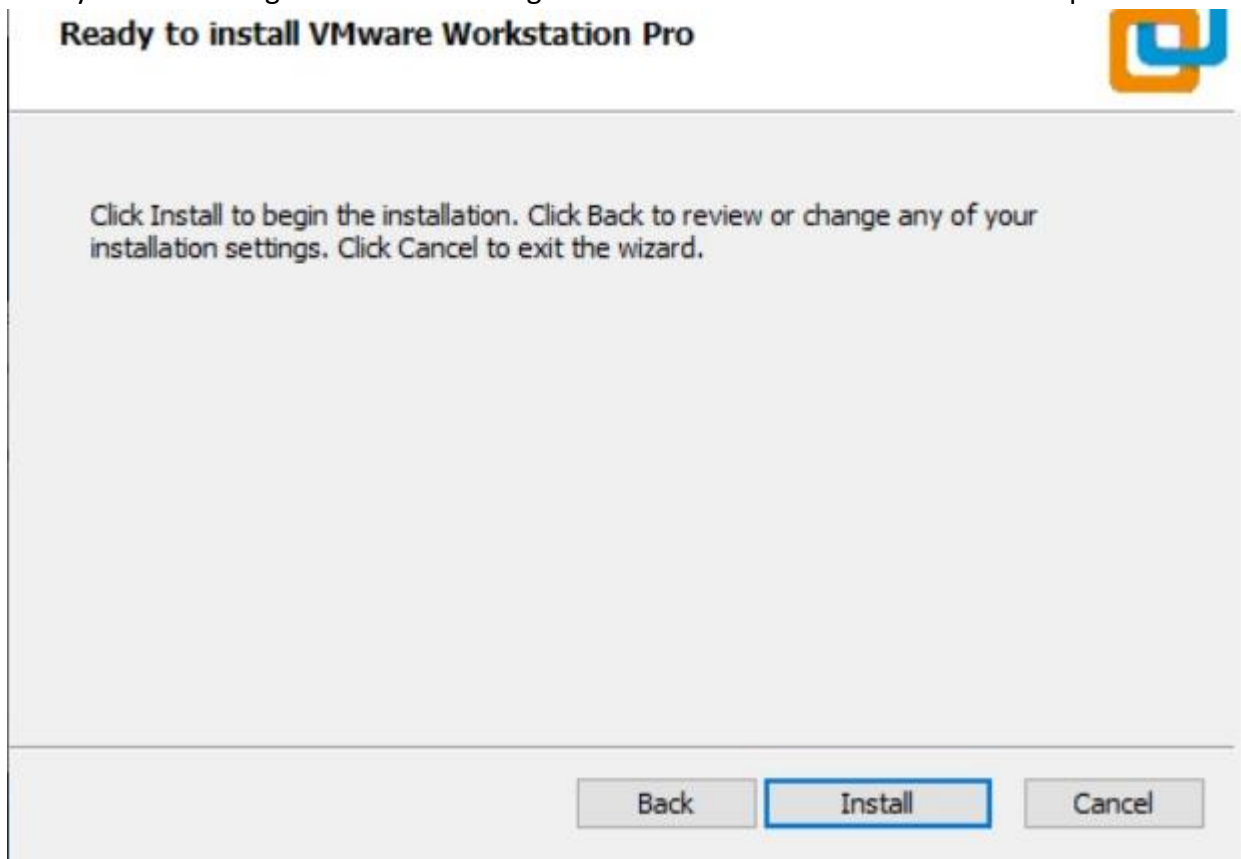
Next you are asked to select “**Check for Updates**” and “Help improve VMware Workstation Pro”. Do as you wish. I normally leave it to defaults that is unchecked.



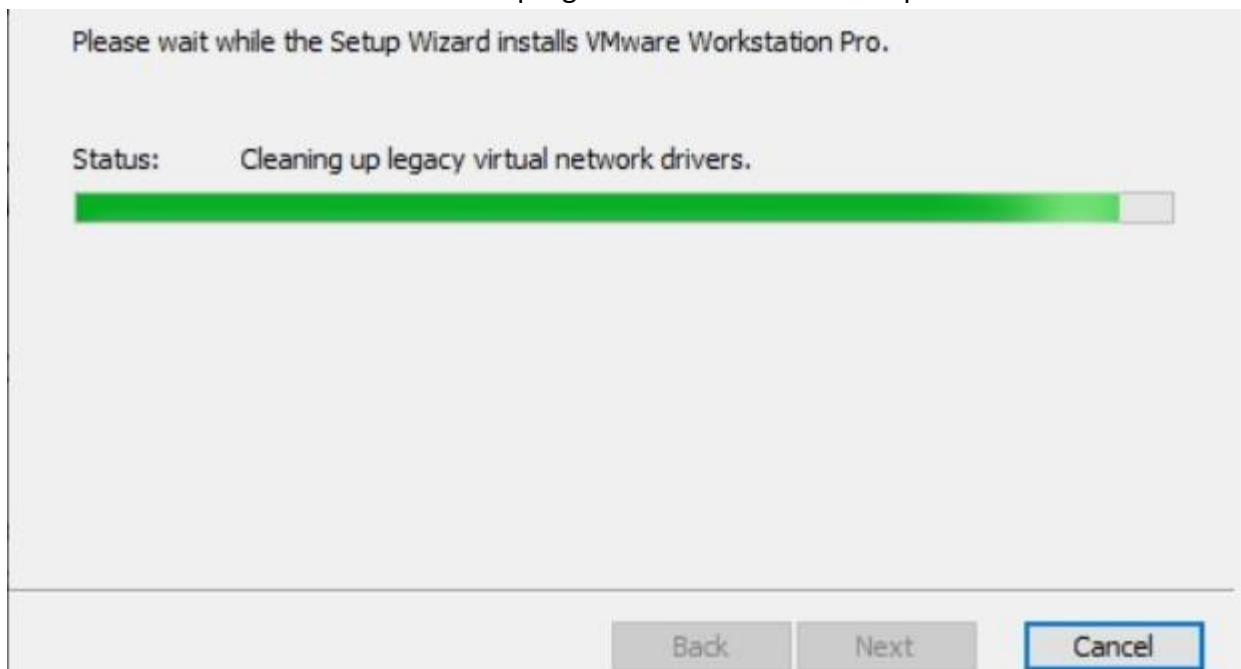
Next step is to select the place you want the shortcut icons to be placed on your system to launch the application. Please select both the options, **desktop** and **start menu** and click **Next**.



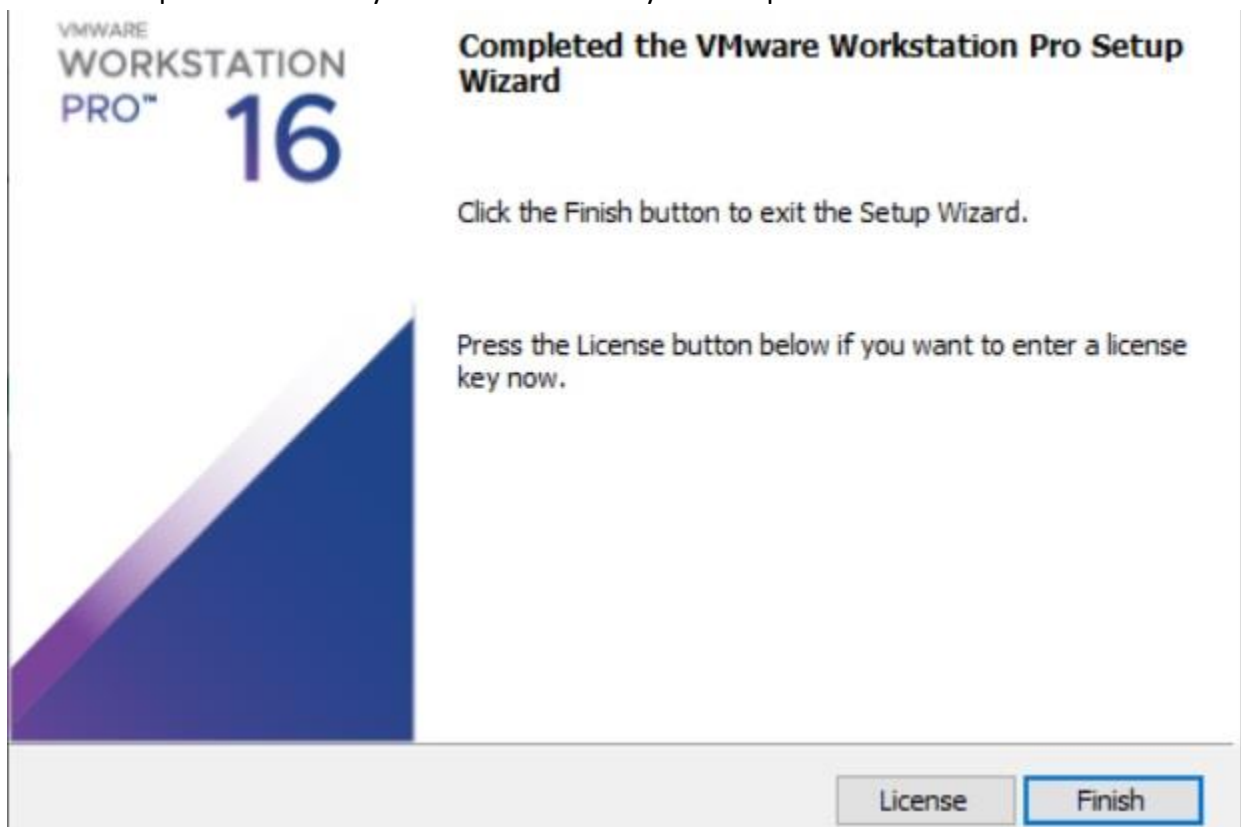
Now you see the begin installation dialog box. Click **install** to start the installation process.



Below screenshot shows Installation in progress. Wait for this to complete.



At the end you will see installation complete dialog box. Click **finish** and you are done with the installation process. You may be asked to restart your computer. Click on **Yes** to restart.



After the installation completes, you should see VMware Workstation icon on the desktop. Double click on it to launch the application. If you see the dialog box asking for license key, enter the license key.



That's it, you can start using VMware Workstation.

