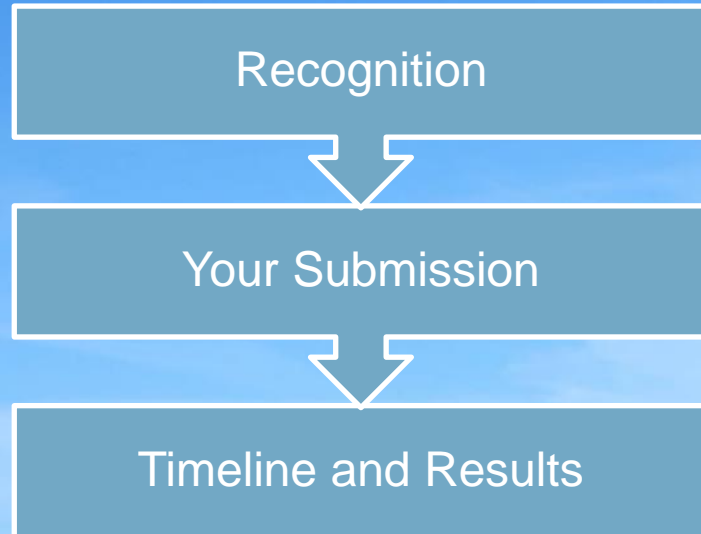




The ICE Mutual Recognition Route to CEng MICE

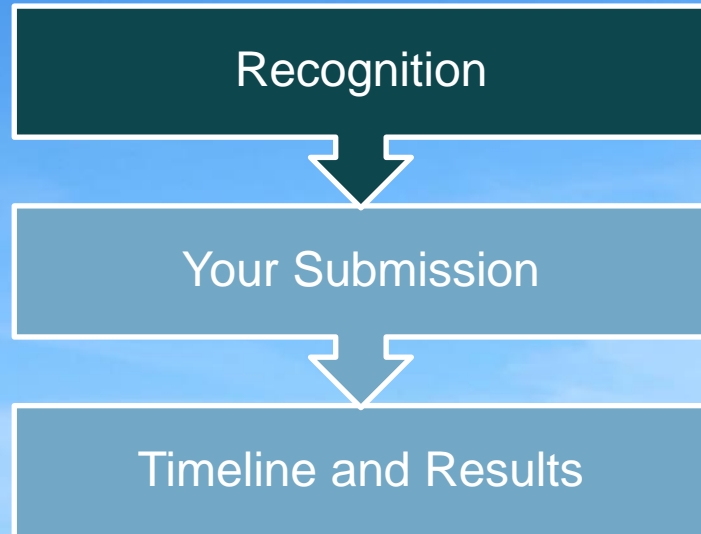
Cath Mansell - Membership Manager

Programme



ice.org.uk/mutual-recognition
ice.org.uk/engc-recognition

Programme



ice.org.uk/mutual-recognition
ice.org.uk/engc-recognition

Mutual Recognition

Agreements are mainly for CEng MICE, with some also for IEng MICE and EngTech MICE.

Find out how you can use your existing professional qualification to gain MICE and Engineering Council registration through our Mutual Recognition agreements. These are international agreements made between two engineering bodies which provide a streamlined route to membership at the equivalent grade to each other's members.

In this section

- Making an application
- What do I need to submit?
- Begin your application
- Document checklist
- Questions?

If you currently hold one of the professional qualifications listed below, and you achieved this by the standard route with a review or interview and not on the basis of recognition or transfer from another institution, then you can apply directly for the equivalent grade of ICE membership and Engineering Council registration.

Please note: Even if you're eligible for recognition you can still choose to qualify with us directly by Professional Review if you prefer, and we will accept your professionally qualified status in lieu of completion of our own initial professional development.

If you do qualify with us by mutual recognition, you will not be able to use your title as the basis for registration with other engineering institutions. If you would like to know more about this, please contact enquiries@mice.org.uk.

Institution	Professional qualification	ICE equivalent Grade
Engineers Ireland	CEng MIE*	CEng MICE
Engineers Ireland	AEng MIE*	IEng MICE
Engineers Ireland	FEEng MIE*	FEEng MICE
Engineering Council of South Africa & South African Institution of Civil Engineers	PrEng MSAICE – Professional Engineer registered with ECSA and member of SAICE of at least one year standing	CEng MICE
Engineering New Zealand	CEngNZ (Eng. Technician)	EngTech MICE
Agency for Qualification of Professional Engineers (AQPE)	Expert Professional Engineer	CEng MICE
Agency for Qualification of Professional Engineers (AQPE)	Senior Professional Engineer	IEng MICE/CEng MICE**
Asociación De Ingenieros Profesionales De España (AIPE)	Expert Professional Engineer	CEng MICE
Asociación De Ingenieros Profesionales De España (AIPE)	Senior Professional Engineer	CEng MICE

Engineering Council of South Africa & South African Institution of Civil Engineers

PrEng MSAICE – Professional Engineer registered with ECSA and member of SAICE of at least one year standing

CEng MICE

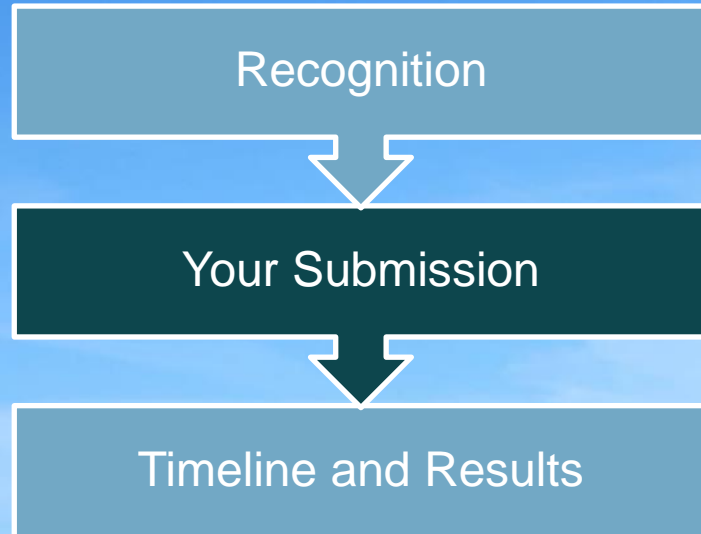
ice.org.uk/mutual-recognition

If you currently hold one of the professional qualifications listed below, then you can apply directly for the equivalent grade of ICE membership and Engineering Council registration provided you achieved this by the standard route with a review or interview and not on the basis of recognition or transfer from another institution.

Please note: If you qualify with us by mutual recognition, you will not be able to use your title as the basis for registration with other engineering institutions or to use ICE's protected titles 'Chartered Civil Engineer' or 'Chartered Infrastructure Engineer'. If those options are important to you, you can choose to qualify with us directly by **Professional Review** and we will accept your professionally qualified status in lieu of completion of our own **initial professional development**.

If you would like to know more about this option, please contact erp@ice.org.uk.

Programme



ice.org.uk/mutual-recognition
ice.org.uk/engc-recognition

Submission by upload portal

You need a non-member reference number to apply
ice.org.uk/register
(or use your ICE membership number, if you already have one.)

erp@ice.org.uk



ice.org.uk/mutual-recognition
ice.org.uk/engc-recognition

Submission Documents



- A statement of no more than 1000 words describing professional experience in civil engineering
- Should demonstrate ability in ICE 7 attributes, using project-based examples
- Must be countersigned by lead sponsor

Attributes of Professional Engineers



Attribute group

Attributes of MICE/IEng MICE

1. Understanding and Practical Application of Engineering

- Maintain and extend knowledge of engineering theory and practice, and how technology assists its application
- Solve engineering problems using a sound theoretical approach, based on evidence, and contribute to continuous improvement
- Identify, review and select techniques, procedures and methods to undertake engineering tasks
- Contribute to the design and development of engineering solutions, implement those solutions, and evaluate their effectiveness in the context of the whole project life cycle
- Exercise sound independent engineering judgement

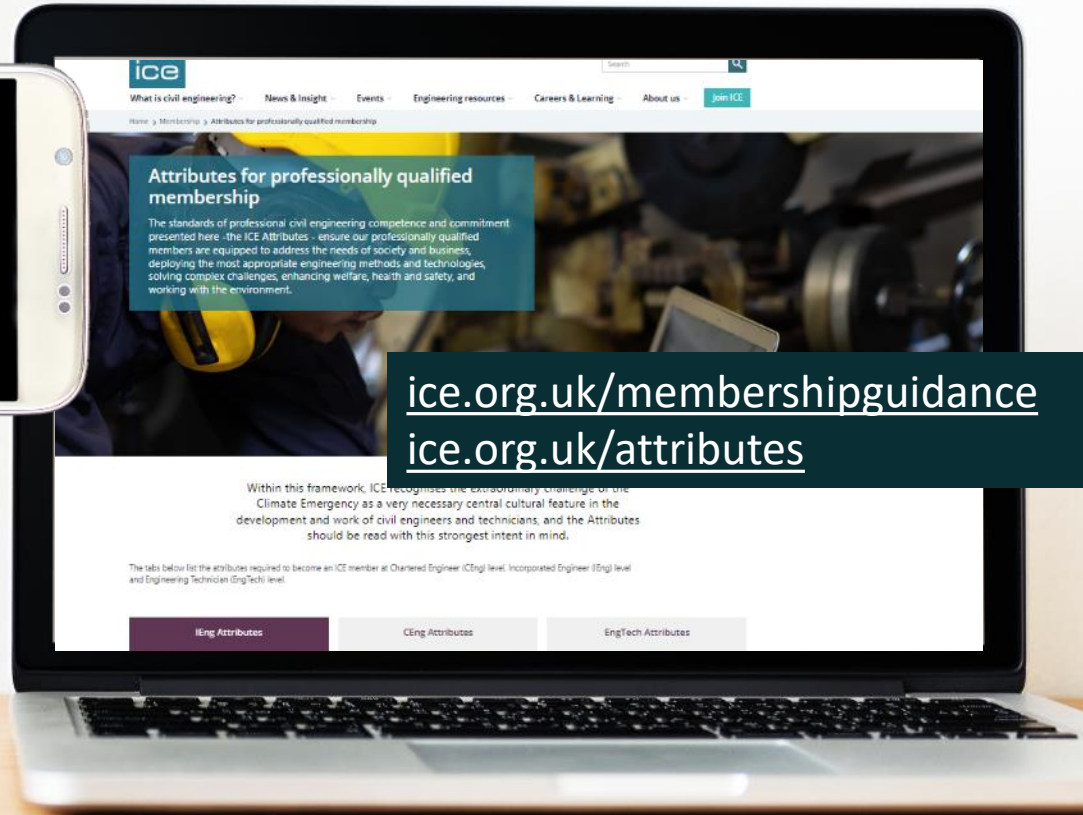
2. Management and Leadership

- Plan the work and resources needed to enable effective implementation of engineering tasks and projects
- Manage the planning and organisation of tasks and resources
- Manage teams or technical specialisms
- Assist others to meet changing technical and managerial needs
- Manage quality processes and contribute to quality improvements

3. Commercial Ability

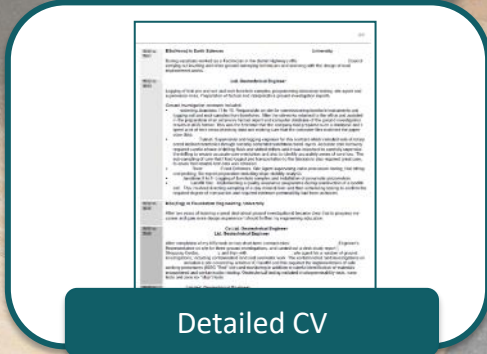
- Manage, prepare and control costs/budgets of engineering tasks or projects
- Use sound knowledge of statutory and commercial frameworks within their own area of responsibility and have an appreciation of other commercial arrangements

Attributes



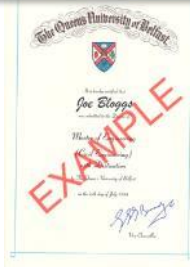
ice.org.uk/membershipguidance
ice.org.uk/attributes

Submission Documents



Submission Documents

Academic qualifications



Certification

I confirm this to be a true copy of this applicant's qualification.

Signature: Donna Surgeoner

Name: Donna Surgeoner

Date: 8/10/18

Employing organisation/university or college:
Institution of Civil Engineers

Position:
ICE Manager

A contact telephone number
or email address:
donna.surgeoner@ice.org.uk

ICE Membership number (if applicable):
0123456789

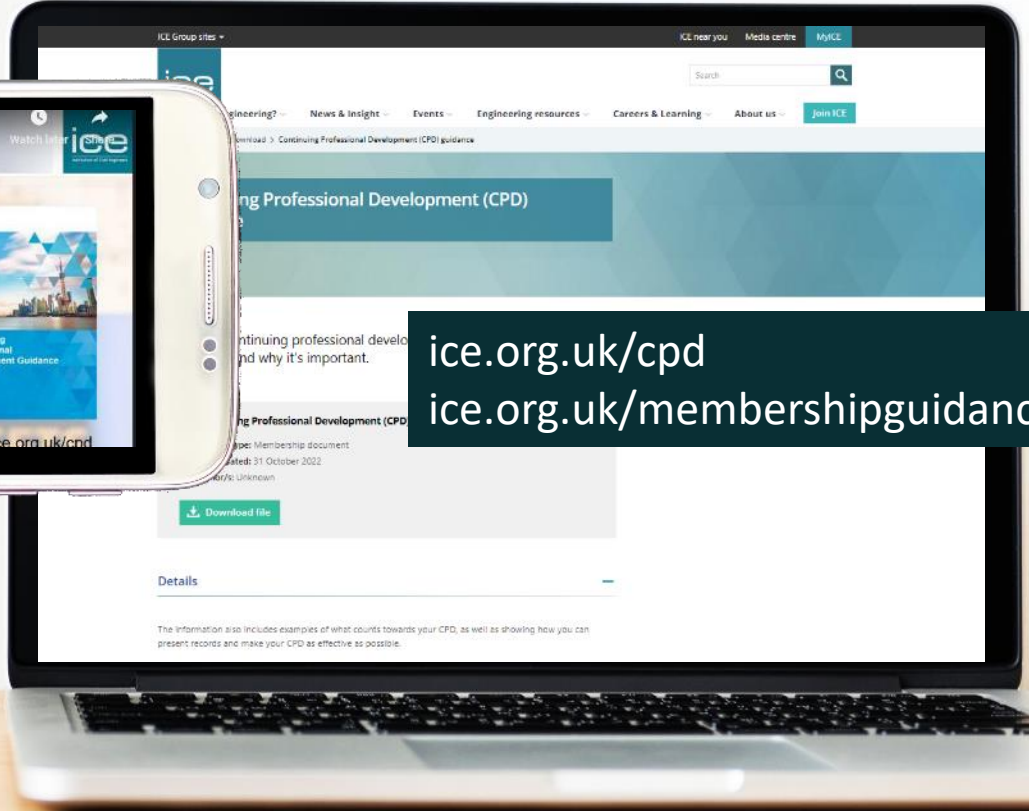


Submission Documents

CPD

CPD RECORD		CPD RECORD		CPD RECORD			
DATE	ACTIVITY	DATE	ACTIVITY	DATE	ACTIVITY		
01/04/2025	Attended CPD session on 'Sustainable Construction' at the Institution of Civil Engineers.	02/04/2025	Completed online CPD course on 'Advanced Surveying Techniques'.	03/04/2025	Participated in a technical seminar on 'Infrastructure Resilience'.	04/04/2025	Completed CPD module on 'Professional Ethics and Conduct'.
05/04/2025	Attended CPD session on 'Digital Construction' at the Institution of Civil Engineers.	06/04/2025	Completed online CPD course on 'Project Management Fundamentals'.	07/04/2025	Participated in a technical seminar on 'Smart Infrastructure'.	08/04/2025	Completed CPD module on 'Health and Safety in Construction'.
09/04/2025	Attended CPD session on 'Construction Law' at the Institution of Civil Engineers.	10/04/2025	Completed online CPD course on 'Construction Economics'.	11/04/2025	Participated in a technical seminar on 'Construction Contracts'.	12/04/2025	Completed CPD module on 'Construction Quality Management'.

Continuing Professional Development (CPD)



ice.org.uk/cpd
ice.org.uk/membershipguidance

CPD Purpose



CPD What is it?

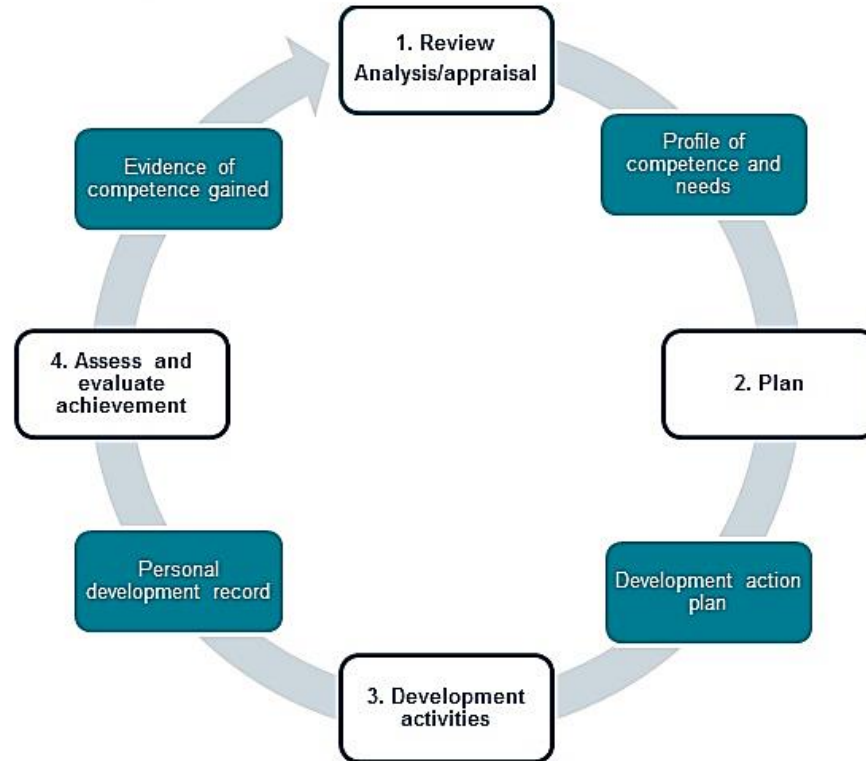
'off the job'
e.g.

- Opportunities away from your day-job
- Training courses, seminars, conferences, workshops
- Private study, reading, sports leadership, clubs and hobbies, community involvement

'on the job'
e.g.

- learning over a period of time - weeks or months.
- Learning or skills gained by carrying out your day job
- putting your theory and knowledge into practice in new situations.

The CPD cycle



CPD Development Action Plan

Name: Jenny Bloggs							
Job role, responsibilities, and engineering sector: Graduate Engineer – Bridges Section							
Review of learning needs				Development plan			
Date	Ref	In what area do I need to improve my performance? *	What do I need to learn in order to achieve this?	What will I do to achieve this?	What are the likely resources and support that I will need?	How will I evaluate a successful outcome?	What are my deadlines for meeting this target?
06/01/2021	A1	Knowledge of health and safety legislation	Latest H&S legislation	Apply to for permission to attend a training course	Course fees	I should have ability to engage effectively with company H&S practices/requirements	31/06/2021
06/01/2021	A2	Ability to assess steel corrosion and specify appropriate repair and protection techniques	Details about corrosion and repair and protection techniques	Peer discussion and self-development through project work. Consultation with colleagues and background of appropriate standards and guidance notes.	Mainly personal time to read with input from colleagues.	Able to apply techniques to an inspection project	31/06/2021
06/01/2021	A3	Ability to design concrete steel structures to Eurocodes	Develop knowledge of Eurocodes for concrete and steel structures	Attend courses about Eurocodes	Budget and time to attend course	Ability to design concrete and steel to Eurocodes	31/06/2021

*Please consider and include any appropriate ICE CPD Framework topics and highlight them within your plan.

CPD Personal Development Record

Name: Jenny Bloggs				Job role, responsibilities, and engineering sector: Graduate Engineer – Bridges Section	
Development activity			Evaluation		
Details of CPD activity	Dates	Effective learning time	Dev. Plan ref.	Key Learning Points	Key Benefits/Value added
<p><i>If applicable, please include what ICE CPD Framework topic this aligns to</i></p> <p>Thomas Telford course on CDM Regulations 2015</p> <p>Health, Safety & Welfare</p>	15/06/2021	6 hours		Gave an overview of the regulations	<p><i>How has this learning activity helped you?</i></p> <p><i>How will the learning be used in the future?</i></p> <p><i>How will this influence my DAP next year?</i></p>
<p>Corrosion Protection: self-development through project work and peer discussion</p>	15/09/2021	3 hours		Examples of different type of surface preparation and protection systems	To improved understanding of paint specification methodology and have an information source to reference to. To apply in future projects
<p>Concrete Centre Course on Eurocode 2</p> <p>Highlight formal Health & Safety training</p>	25/11/2021	12 hours		A good base knowledge to enable me to design basic structures to Eurocode 2.	An excellent course. Need to follow up with practical implementation.

21
hours

< 30 hours (per activity)

Useful to add an annual summary in hours

{Note: 1 day = 6 hours learning time}

CPD documentation for application

You must submit:

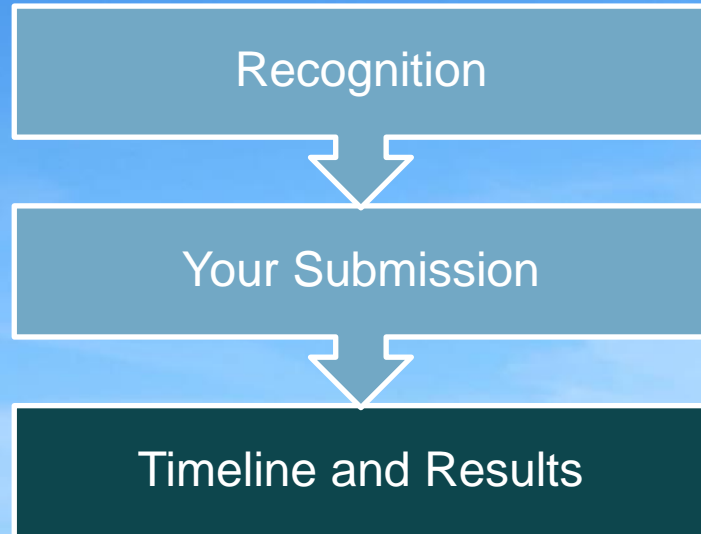
- Current Development Action Plan (DAP)
- 3 previous years Personal Development Record (PDR)

The assessors are looking for;

- Minimum 30 hours per year
- Broad subject base; technical and non technical
- Formal H&S training annually

CPD is a good way to demonstrate ICE engagement

Programme



ice.org.uk/mutual-recognition
ice.org.uk/engc-recognition

Timeline

ice.org.uk/keydates

Submit application by
deadline.

Result issued approx. 8
weeks after closing
date.

Results

Successful

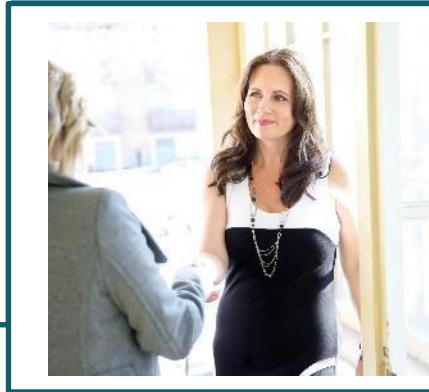


Results

Successful



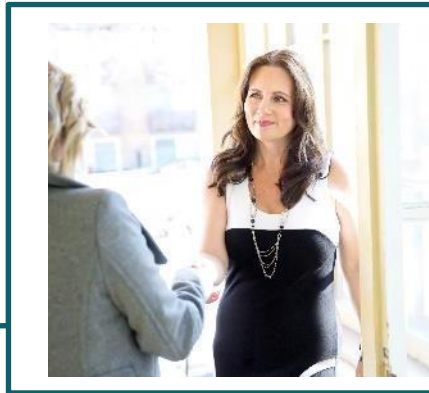
Unsuccessful – may be asked for more information or invited to interview



Successful

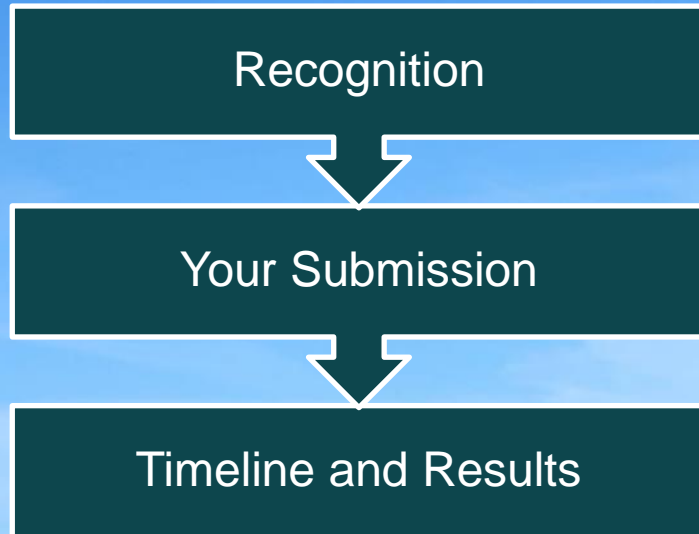


Unsuccessful – may be invited to interview



Unsuccessful – we will explain why
Unhappy - option to appeal





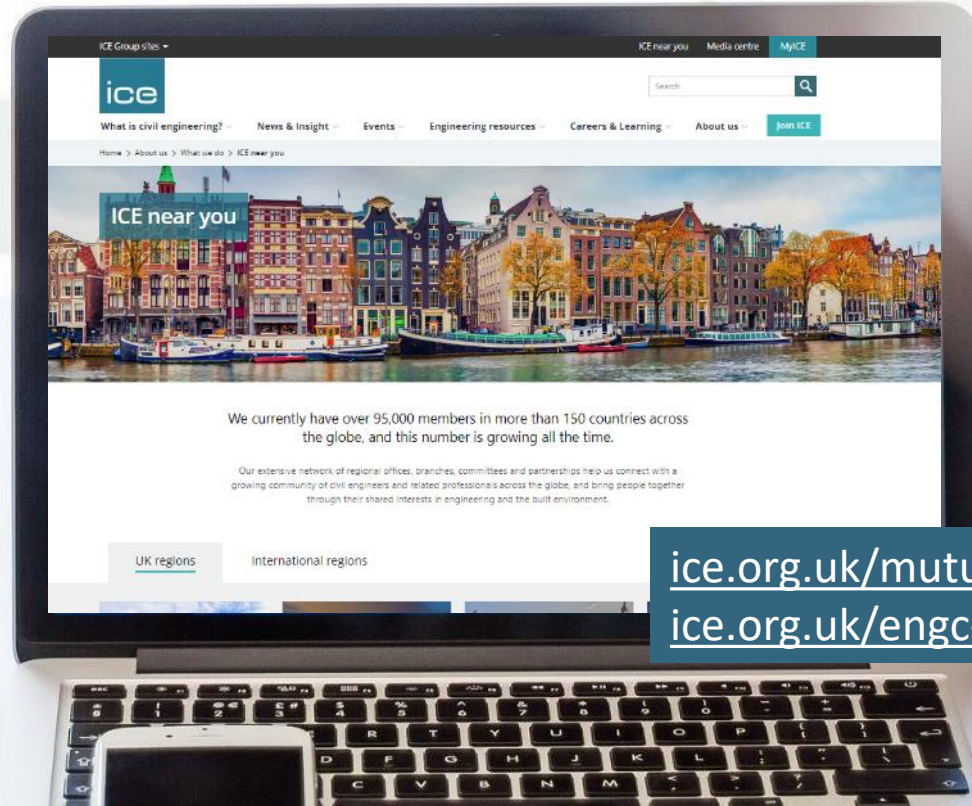
ice.org.uk/mutual-recognition
ice.org.uk/engc-recognition

Questions?

Cath.mansell@ice.org.uk

[Specialist team](#)

erp@ice.org.uk



ice.org.uk/mutual-recognition
ice.org.uk/engc-recognition

