

52 ATLANTIC ESTATE



A place where presence is enough

S. João das Lampas, Sintra, Portugal

What remains, when the noise fades?

why choose

Portugal



Geopolitical
neutrality and EU
stability



Attractive
tax regime



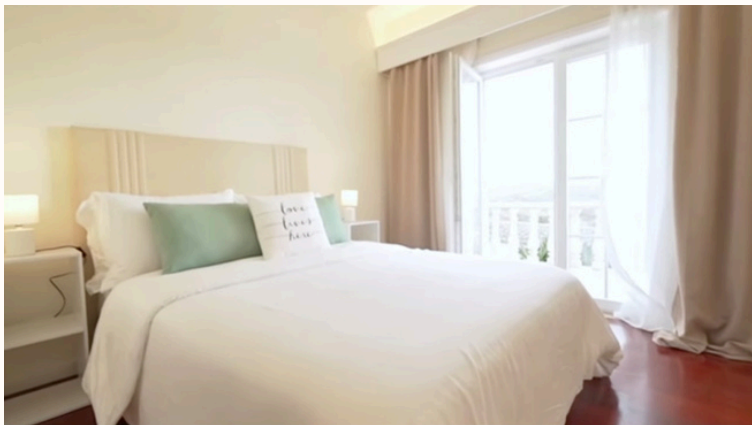
Real asset in an
appreciating
natural location

In a world of noise, Portugal is signal. A private estate at the edge of Europe, designed for permanence

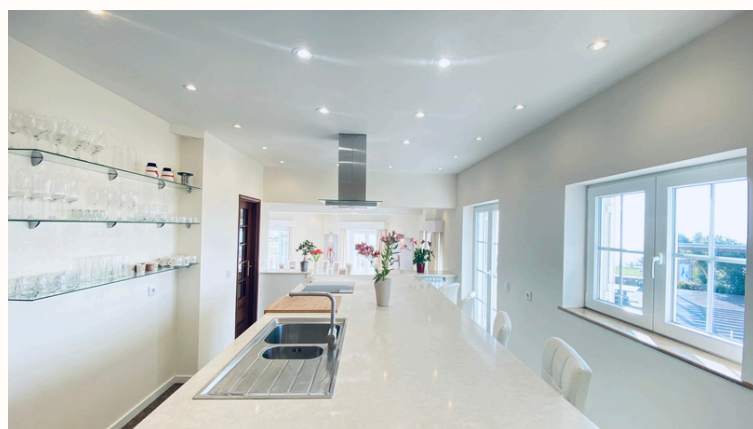
The Property

- 3 hectares at the edge of the Sintra-Cascais Natural Park
- Direct access to the wild Vigia Beach
- 9-bedroom villa (modernised)
- Multiple annexes (caretaker's house, agricultural support)
- Fully off-grid with solar, water treatment, septic system
- Swimming pool with heating pump
- Agricultural potential and regenerative zoning





Modern Interiors



Between the Wind and the Stone

For those who read what isn't written



Where autonomy meets elegance



Infrastructure

- 21kW solar + 50kW batteries
- Water: artesian well + purification + dual storage
- Automation systems: lighting, watering, pool, heating



Location

- 1km from Assafora
- 10Km from Ericeira
- 15Km from Sintra
- 20Km from Cascais
- 40km from Lisbon (International airport access)

Europe's edge. Lisbon's reach. Total privacy.

Use scenarios



Private family
retreat



Agricultural and
regenerative project



Long-term capital
preservation

Legacy is not built in quarters. It grows in decades.

Terms & Contact

- Price upon request
- Direct negotiation with the property owner
- Virtual tour available upon interest



Sofia Maurício

Executive Assistant, OASIS 52

Email: info@52atlanticestate.pt

Phone/WhatsApp: +351 967 527 159



Rarely listed. Never duplicated.