

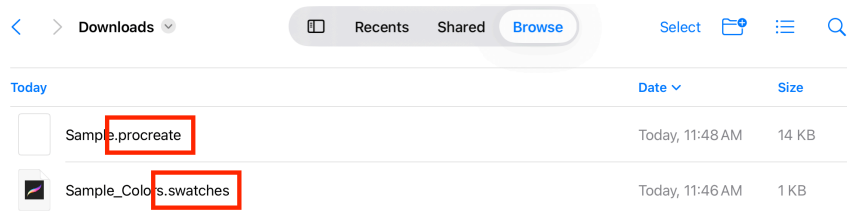
## How to Import Procreate and Swatch Files on iPad

1. Locate your downloaded ZIP folder in the **Files** app and tap on it to unzip the files.

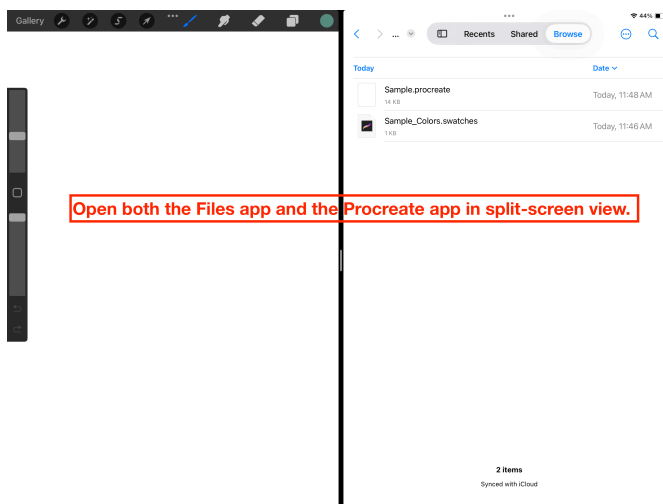


**Files App**

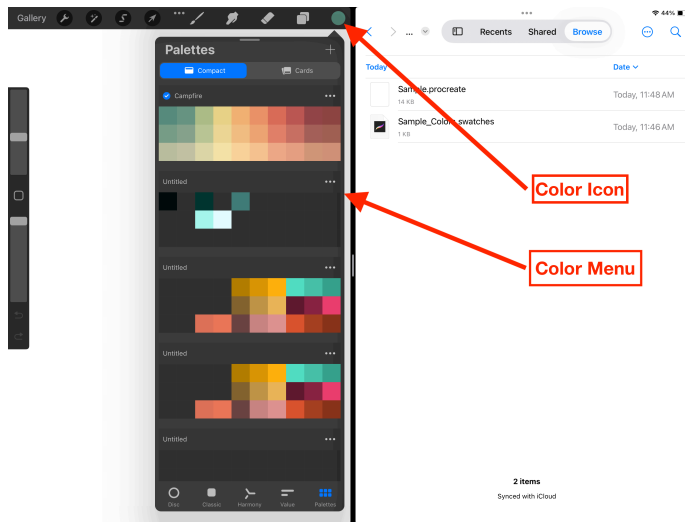
2. Select the **“.Procreate”** file—it will automatically open in the Procreate app.



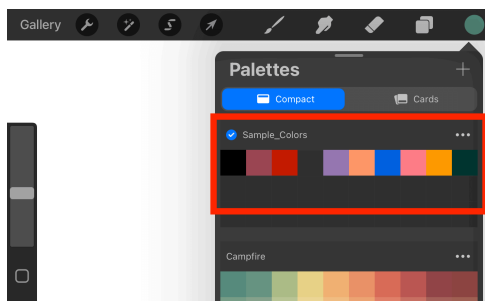
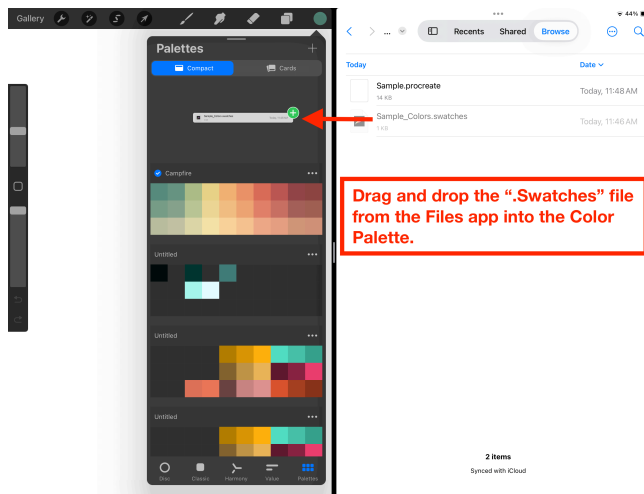
3. To import the **Color Palette** file, open both the **Files** app and the **Procreate** app in split-screen view.



4. Tap the **Color** icon in the upper-right corner of your project to open the **Color Menu**.



5. Drag and drop the **“Swatches”** file from the **Files** app into the **Color Palette**.



If you encounter any issues, feel free to contact us at [info@modaforall.com](mailto:info@modaforall.com)—we're happy to help!

Explore our latest products at [www.ModaForAll.com](http://www.ModaForAll.com)!