



# SACRED PROTECTION GUIDE



PROTECTION RITUALS FOR  
THE HOME, SPIRIT &  
SACRED SPACE

BY

*Kristy*

PRIESTESS OF THE MYSTICS





# PROTECTION IS SACRED

Protection is not about fear.

It is not about becoming hyper-vigilant, spiritually closed off, or disconnected from the world around you.

True energetic protection is an act of sovereignty.

It is the sacred practice of tending to your energy, your home, your spirit and the spaces you move through each day. It is the intentional act of strengthening your energetic field so you can remain grounded, clear, intuitive and deeply connected to yourself, even within heavy environments or around the projections of others.

Sensitive souls often absorb far more than they realise.

Energetic heaviness, emotional overwhelm, exhaustion, irritability, sudden tension within the home, recurring bad luck, feeling constantly observed, spiritually drained or unable to fully settle within yourself can all be signs that your energetic field is carrying more than it was ever designed to hold.

Within many ancient spiritual traditions, rituals of cleansing, warding, smoke purification, oils, salts, herbs, sigils and protective symbols have long been used to restore energetic balance and create sacred boundaries around both the self and the home.

Protection is not about living in fear of the evil eye or becoming consumed by negativity.

It is about learning how to honour your energy deeply enough that you no longer allow every external projection, emotional current or energetic attachment to take root within your field.

In my own spiritual practice and ritual work, I have found that the more protected, grounded and energetically supported a person becomes, the easier it is for them to move through life feeling aligned, magnetic, clear-minded and connected to their intuition.

Your energy carries instruction.

Your home carries frequency.

Your rituals carry intention.

And the more intentionally you begin tending to these spaces, the more supported, powerful and spiritually connected you often begin to feel.

This guide was created to introduce you to a selection of sacred protection rituals, tools and practices designed to support you in strengthening your energetic field, clearing heaviness, creating sacred space and reclaiming energetic sovereignty within your life and home.

May these rituals support you beautifully.





Visit Magical Realm Shop for Done-For-You Rituals by Kristy  
[magicalrealmshop.com.au](http://magicalrealmshop.com.au)



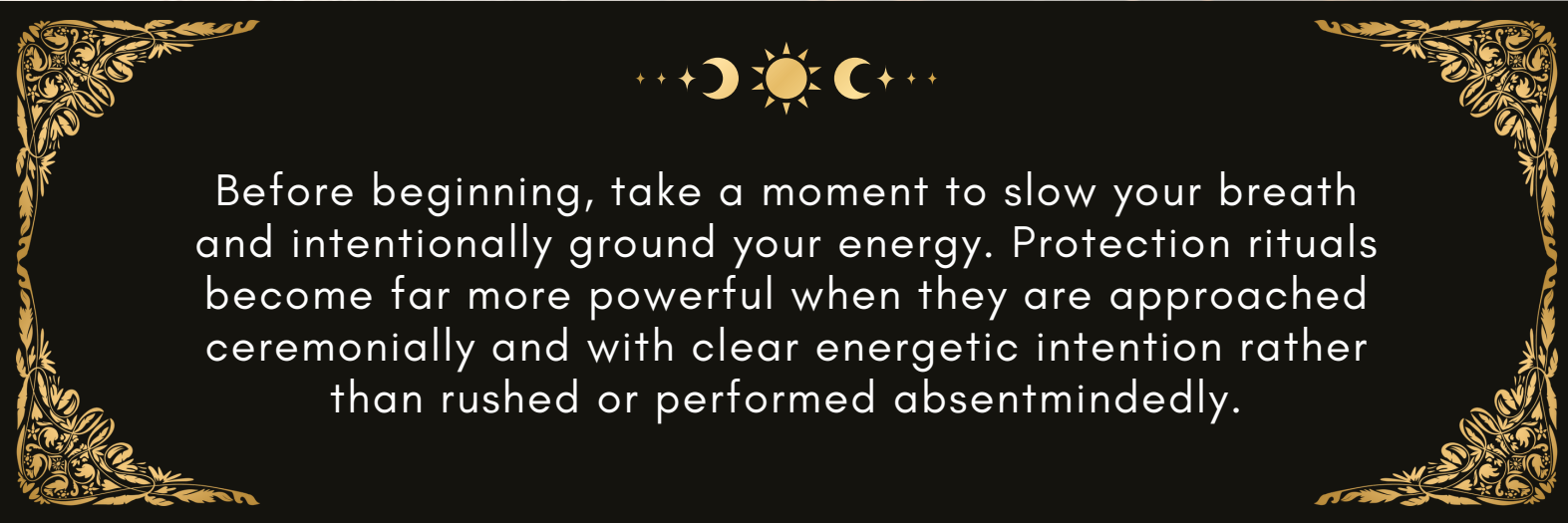
# BLACK SALT

## PROTECTION RITUAL

Black salt has long been used within spiritual protection practices as a powerful ritual tool for absorbing dense energetic residue, strengthening energetic boundaries and warding against heavy projections, jealousy and unwanted energetic attachment.

Unlike ordinary salt, black salt is intentionally prepared through ritual and infused with protective intention, transforming it into a sacred energetic barrier that can be used throughout both the home and the personal energetic field.

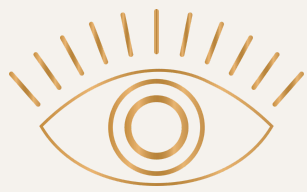
Many practitioners place black salt near entryways, windows, thresholds, ritual spaces or corners of the home to help absorb stagnant energy and create stronger energetic protection within the space. It may also be used during candle rituals, spiritual cleansing practices or moments where the energetic atmosphere feels unusually heavy or unsettled.



Before beginning, take a moment to slow your breath and intentionally ground your energy. Protection rituals become far more powerful when they are approached ceremonially and with clear energetic intention rather than rushed or performed absentmindedly.

## YOU WILL NEED

- Sea salt or Himalayan salt
- Activated charcoal powder or finely crushed charcoal
- Black pepper
- Rosemary
- A black candle
- A small bowl or mortar and pestle
- Paper with your protection rune or sigil drawn on it



## RITUAL PREPARATION

Light your black candle and spend a few moments becoming fully present within your space.

As the flame begins to burn, visualise your energy becoming grounded, protected and sealed from all heavy projections, negativity and energetic interference.

You may wish to place the protection rune beneath your bowl or lightly carve one into the candle itself before beginning.



## CREATING THE BLACK SALT

Slowly combine the salt, charcoal, pepper and rosemary together within your bowl.

As you mix the ingredients, focus your intention clearly into the blend. Focus on energetic sovereignty, protection, clarity and spiritual strength.

You may wish to repeat softly:

*"I seal my energy in protection, clarity and light.  
Only energies aligned with my highest good may enter this space."*

Continue mixing until the ingredients feel fully combined and energetically charged.

Now using with the paper with the rune fold this towards you repeating, 'I am protected in every version of myself'. Safely burn this paper with the black candle and add the ash from this into the mix of your salt, you have now sealed the salt powerfully.



## WAYS TO USE BLACK SALT

- Place small amounts near doorways or windows
- Use around ritual candles for protection workings
- Add to protection bowls or jars
- Place beneath the bed or near entrances
- Use symbolically within cleansing rituals
- Sprinkle lightly around thresholds before smoke cleansing



Black salt should always be used intentionally and respectfully as a sacred protection tool rather than fearfully or obsessively.

The energy placed into the ritual matters just as deeply as the ingredients themselves.





Visit Magical Realm Shop for Done-For-You Rituals by Kristy  
[magicalrealmshop.com.au](http://magicalrealmshop.com.au)



# BLACK CANDLE

## PROTECTION RITUAL

For centuries, black candles have been used within spiritual and ceremonial practices as symbols of protection, energetic sealing, purification and the transmutation of heavy or stagnant energy.

Contrary to common misconception, black candles are not inherently negative. Within ritual work, they are often used to absorb energetic density, strengthen spiritual boundaries and assist in clearing unwanted energetic attachment, projections or lingering heaviness from both the self and the surrounding space.

Fire has long been regarded as a sacred transformational element.

As the flame burns, it symbolically transmutes, clears and releases what no longer belongs within the energetic field.

This ritual may be performed whenever your energy feels unusually heavy, emotionally overwhelmed, spiritually unsettled or when you feel called to strengthen protection around yourself or your home.

### YOU WILL NEED

- One black candle
- Protection oil (see protection oil section in this manual)
- Rosemary, black pepper or other protective herbs
  - A lighter or matches
  - Salt or protection salt
- protection rune or sigil
- A quiet space where you will not be disturbed



## PREPARING THE RITUAL SPACE

Before beginning, spend a few moments intentionally slowing your breath and grounding your energy.

Make sure you cleanse the space with sage, rosemary or smoke or use sound to clear the space.

Place your candle before you and take a moment to connect intentionally with the purpose of the ritual.

Rather than focusing on fear, focus instead on energetic sovereignty, spiritual clarity and the strengthening of your energetic field.

Protection rituals become far more powerful when approached from empowerment rather than anxiety.



## DRESSING THE CANDLE

Place a small amount of oil onto your fingertips and slowly dress the candle from the base upward, visualising protection, light and sacred boundaries strengthening around you with each movement.

You may then roll the candle lightly within your chosen herbs or sprinkle them gently around the base of the candle along with the salt around the candle.

If working with protection runes or sigils, you may wish to carve them softly into the candle wax before lighting the flame or write this on paper and then place this under the dish you place the candle on.

## THE RITUAL

Light the candle slowly and spend a few moments simply watching the flame.

Visualise the fire absorbing all energetic heaviness, projections, emotional residue and stagnant energy that no longer belongs within your field.

See your energy becoming clearer, calmer, stronger and more protected with each passing moment.

Repeat softly as you start to raise the energy around the ritual and allow your energy and voice to get stronger:

*"I stand protected within my own sacred energy. Only what is aligned, supportive and of the highest light may remain within my space."*

Safely place your hands over and around the flame as you chant.

Allow the candle to burn safely for as long as intuitively feels aligned.

Once complete, spend a few moments sitting quietly within the energy you have created.

Protection rituals are not simply about removing heaviness. They are also about reclaiming energetic stability, spiritual connection and a deeper sense of safety within yourself and your environment.

The more intentionally these rituals are practised, the more naturally the energetic field often begins responding with greater clarity, strength and balance.

You may dispose of the contents of the ritual in a sacred way - either bury and return herbs to the earth or if placing in the garbage make sure you wrap with tissue paper or paper in a sacred ceremony of gratitude.



Visit Magical Realm Shop for Done-For-You Rituals by Kristy  
[magicalrealmshop.com.au](http://magicalrealmshop.com.au)



# PROTECTION BOWL FOR THE HOME



Protection bowls have long been used within spiritual and ritual traditions as energetic anchors placed intentionally throughout the home to absorb heaviness, strengthen spiritual boundaries and maintain a sense of energetic harmony within a space.

Unlike temporary cleansing rituals, protection bowls work more quietly and continuously, creating an ongoing energetic current of grounding, warding and protection within the environment they are placed.

They may be positioned near entryways, within ritual spaces, beside the bed, near windows or within areas of the home that feel emotionally heavy, unsettled or energetically dense.

Over time, many people begin noticing that intentionally tended spaces often feel calmer, clearer, lighter and more energetically supportive.



A protection bowl is not simply decoration.

It is a ceremonial object infused with intention, symbolism and energetic instruction.



## YOU WILL NEED

- A small ceramic, glass or metal bowl
- Black salt or sea salt
  - Rosemary
  - Cloves
  - Black pepper
- Obsidian, black tourmaline and clear quartz
- A black or white candle
- Protection rune or sigil



## PREPARING THE BOWL

Begin by cleansing the space around you and slowing your breath intentionally.

As you prepare the bowl, approach the process ceremonially rather than hurriedly. Every ingredient placed within the bowl carries symbolic and energetic meaning.

Salt may be used to absorb energetic heaviness and create grounding protection.

Rosemary has long been associated with purification, warding and spiritual clarity.

Cloves and pepper are often used within protection practices to strengthen energetic boundaries and repel unwanted energetic influence.

Protective crystals may be added to further anchor the intention into the physical space.

## CREATING THE PROTECTION BOWL

Slowly begin layering each ingredient into the bowl with intention.

As you place each item within the vessel, focus clearly on the energy you are inviting into your home and the energy you are no longer willing to carry.

You may wish to place a small protection rune at the bottom of the bowl itself or draw one discreetly onto parchment placed within the base of the vessel.



Light your candle inside the bowl held up by the items inside and spend a few moments visualising the home becoming sealed in clarity, grounding, peace and protection.

You may wish to repeat softly:

*"This space is protected, grounded and energetically sealed.*

*Only energies aligned with peace, harmony and the highest good may enter here."*

## MAINTAINING THE BOWL

Protection bowls should be tended to intentionally.

Replace ingredients whenever the bowl begins feeling energetically heavy, stagnant or visually depleted. Many practitioners refresh their bowls during the new moon, full moon or after emotionally intense periods within the home.

The more consciously you engage with your space, the more responsive and energetically supportive it often becomes.

— ✨ —  
Your home carries energy.

The rituals you practise within it shape the atmosphere you live within each day.



Visit Magical Realm Shop for Done-For-You Rituals by Kristy  
[magicalrealmshop.com.au](http://magicalrealmshop.com.au)



# PROTECTION OIL

Protection oils have long been used within ceremonial and spiritual traditions to strengthen energetic boundaries, anoint ritual tools, dress candles and support the energetic field during periods of heaviness, spiritual overwhelm or increased energetic sensitivity.

Unlike synthetic fragrance oils, ritual oils are created intentionally and ceremonially, carrying both symbolic and energetic purpose through the herbs, ingredients and intention infused within them.

When used consistently within spiritual practice, protection oils may help create a stronger sense of grounding, energetic stability and sacred connection within both the self and the surrounding environment.

They may be used to anoint candles, ritual tools, doorways, thresholds or lightly applied to pulse points before entering crowded or energetically overwhelming spaces. I use this oil to anoint myself before my ceremonies and casting rituals.



## YOU WILL NEED

- A small glass bottle or jar
  - Olive oil, jojoba oil or sweet almond oil
  - Herbs (Use a mix of rosemary, cloves, bay leaves, mugwort, star anise, black pepper, lavender)
- Small protective crystals chips (tourmaline, obsidian or whatever feels aligned)
- Essential Oils (Frankincense, Sandalwood, Cedarwood, Myrrh or mixture of these)

## PREPARING THE RITUAL

Before beginning, take a few moments to intentionally settle your energy.

Protection rituals become more powerful when approached slowly and ceremonially rather than mechanically.

Light some candles and allow yourself to become fully present within the space.

As you prepare the oil, focus your attention not on fear or external negativity, but on strengthening your own energetic sovereignty, clarity and spiritual grounding.



## CREATING THE OIL

Begin placing your herbs carefully into the bottle.

Rosemary may be used for purification, protection and energetic clarity.

Cloves are often associated with warding and strengthening energetic boundaries.

Lavender brings calming, soothing and balancing frequencies into the blend, helping soften emotional heaviness within the energetic field.

Black pepper may be added symbolically to repel dense projections and strengthen spiritual resilience.



Slowly pour the carrier oil over the herbs, visualising the blend becoming infused with protective light, grounding and energetic stability.

Add in the essential oils and sprinkle in the crystal chips.

You may wish to place a small protection sigil beneath the bottle or softly hold the oil between your hands while setting intention into the blend.

## CHARGING THE OIL

Hold the bottle gently and repeat softly:

*"My energy is protected, grounded and sovereign. Only what is aligned with my highest good may move within my field."*

Allow the oil to sit beside your candles for a period of time while the ritual energy settles into the blend.

## WAYS TO USE PROTECTION OIL

- Dress ritual candles before protection workings
- Anoint doorways and thresholds
- Apply lightly to pulse points before crowded spaces
- Use during cleansing rituals and ceremonies
- Place a small amount onto ritual tools or protection bowls
- Add symbolically to spiritual baths



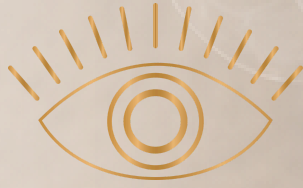
The more intentionally ritual tools are created and used, the more deeply they often begin carrying energetic resonance within your spiritual practice.

Protection is not only created through ritual itself.

It is strengthened through consistency, intention and the energy repeatedly woven into the objects and spaces surrounding you.



Visit Magical Realm Shop for Done-For-You Rituals by Kristy  
[magicalrealmshop.com.au](http://magicalrealmshop.com.au)



# SMOKE CLEANSING RITUAL

Smoke cleansing has been practised throughout many spiritual and ceremonial traditions for centuries as a sacred method of clearing stagnant energy, restoring energetic harmony and purifying both the self and the surrounding space.

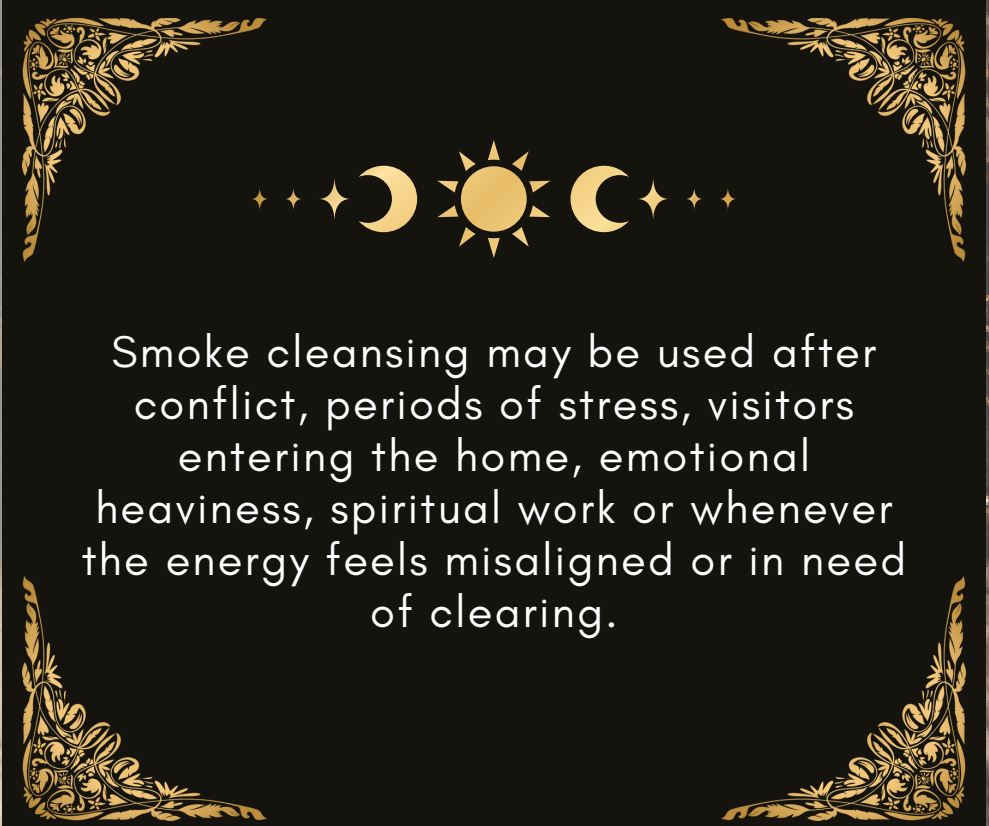
When approached intentionally, smoke cleansing becomes far more than simply burning herbs.

It becomes a ritual of energetic reset.

A way of shifting the atmosphere within a space, releasing emotional heaviness and restoring a greater sense of clarity, grounding and energetic flow throughout the home and energetic field.

Many people instinctively feel when the energy within a space has become heavy.

Tension may linger within rooms, exhaustion may feel amplified, emotional overwhelm may intensify or the atmosphere itself may begin feeling unsettled, stagnant or energetically dense.



Smoke cleansing may be used after conflict, periods of stress, visitors entering the home, emotional heaviness, spiritual work or whenever the energy feels misaligned or in need of clearing.

## HERBS COMMONLY USED IN SMOKE CLEANSING

- Rosemary for purification and energetic protection
- Mugwort for intuition and spiritual clarity
- Lavender for peace and energetic soothing
- Cedar for grounding and home protection
- Sage for cleansing and releasing stagnant energy
- Juniper for warding and purification



## PREPARING THE BOWL

Before beginning, open windows and doorway slightly to allow stagnant energy to move outward from the space.

Light your herbs carefully and allow the smoke to rise gently.

Approach the ritual slowly and intentionally rather than rushing through the process.

The energy carried into the ritual matters deeply.



## THE CLEANSING RITUAL

Beginning near the entrance of the home or room, slowly move throughout the space allowing the smoke to move intentionally into corners, thresholds, mirrors, windows and areas that feel energetically heavy or emotionally unsettled.

As the smoke rises, invite all stagnant energy, projections, emotional residue and heaviness dissolving and leaving the space completely.

You may wish to repeat softly:

*"I clear this space of all heaviness and energetic residue.  
Only peace, protection and aligned energy may remain here."*

If cleansing your own energetic field, move the smoke gently around the body while visualising your energy becoming lighter, clearer and more grounded.

Pay particular attention to the heart space, shoulders, hands and feet where energetic heaviness is often unconsciously carried.



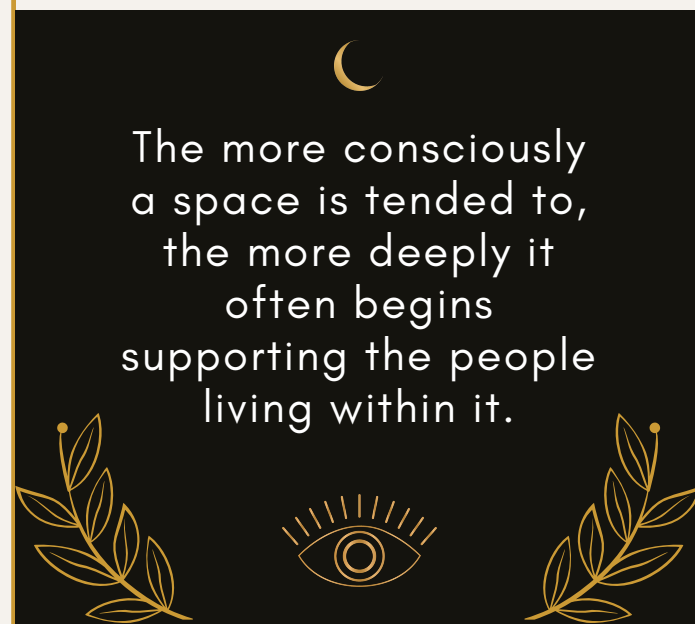
## AFTER THE RITUAL

Once complete, allow fresh air and light to move gently throughout the space.

Many practitioners choose to follow smoke cleansing with grounding rituals, candles, protection bowls or oils to help anchor supportive energy back into the environment.

Cleansing creates space.

Protection helps maintain the energetic atmosphere you intentionally choose to live within.



The more consciously a space is tended to, the more deeply it often begins supporting the people living within it.



Visit Magical Realm Shop for Done-For-You Rituals by Kristy  
[magicalrealmshop.com.au](http://magicalrealmshop.com.au)



# PROTECTION

## RUNES & SACRED SYMBOLS

Throughout many ancient spiritual traditions, symbols, sigils and protective markings have been used as energetic anchors carrying intention, warding and spiritual instruction into both ritual work and the surrounding environment.

Long before modern spiritual practices, sacred symbols were carved into candles, doorways, tools, jewellery, parchment and ritual objects as a way of strengthening energetic boundaries and creating greater spiritual protection around the self and the home.

A protection symbol is not simply decorative.

When approached intentionally, it becomes a visual expression of energetic instruction, focus and ritual intention.

Many practitioners choose to work with symbols during candle rituals, smoke cleansing ceremonies, protection bowls, oils, thresholds and sacred spaces to further strengthen the energetic atmosphere surrounding the ritual itself.

YOU DO NOT NEED TO  
WORK WITH EVERY  
SYMBOL AT ONCE.

Often the most powerful practice is choosing one or two symbols that resonate deeply and intentionally weaving them throughout your spiritual rituals and sacred space over time.



## ALGIZ RUNE

**Protection • Spiritual Shielding •  
Higher Guidance**

The Algiz rune has long been associated with energetic protection, spiritual awareness and divine shielding.

Its shape resembles outstretched arms or antlers reaching upward, symbolising both spiritual connection and energetic defence.

Algiz may be used:

- Carved into candles
- Drawn beneath protection bowls
- Placed near doorways or windows
- Added to ritual parchment or journals
- Used during meditation or protection rituals

This rune is especially supportive during periods where the energetic field feels highly sensitive, emotionally overwhelmed or spiritually exposed.



## THURISAZ RUNE

**Warding • Boundary Strengthening •  
Energetic Defence**

Thurisaz is often associated with strong protective boundaries and the repelling of unwanted energetic interference or projections.

This rune carries a much stronger and more forceful protective current and is best approached intentionally and respectfully.

It may be used during:

- Home protection rituals
- Protection candle workings
- Energetic clearing ceremonies
- Rituals involving strong energetic boundaries

Many practitioners work with Thurisaz when they feel called to strengthen energetic sovereignty and create firmer spiritual protection around themselves or their environment.

## PROTECTIVE SIGILS

Unlike traditional runes, sigils are often personally created symbols infused with specific energetic intention.

A sigil may be drawn onto parchment, carved into candles, placed beneath ritual tools or added discreetly throughout the home as a symbolic energetic anchor.

Protection sigils are commonly created around intentions such as:

- energetic protection
- peace within the home
- spiritual clarity
- warding heavy projections
- grounding and stability
- strengthening intuitive boundaries



## WORKING WITH SACRED SYMBOLS

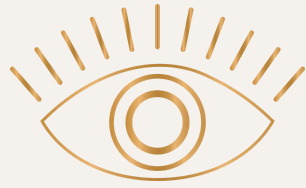
Protection symbols become most powerful when used consistently and ceremonially rather than fearfully or obsessively.

Approach them as sacred energetic tools designed to support your rituals, strengthen intention and deepen your connection to the energy you are consciously choosing to cultivate within your life and home.

A symbol carries energy where attention repeatedly flows.

The more consciously intention is woven into your rituals and sacred spaces, the more deeply those spaces often begin responding energetically over time.





# A SACRED CLOSING



Protection is not a single ritual.

It is an ongoing relationship with your energy, your home, your intuition and the spiritual atmosphere you choose to cultivate around yourself each day.

The more intentionally you begin tending to your energetic field, the more clearly you often begin recognising what truly belongs within your space and what does not.

Over time, protection rituals can become far more than spiritual practices.

They become sacred moments of grounding, remembrance, connection and energetic sovereignty woven gently throughout daily life.



A candle lit with intention.



Herbs prepared ceremonially.



Smoke moving slowly through a room.



Oil pressed softly into the palms before entering the world.

Small sacred rituals repeated consistently often carry profound energetic power over time.

Protection is not about becoming fearful of the world around you.

It is about strengthening your own energetic foundation deeply enough that external projections, emotional heaviness and spiritual overwhelm no longer move through your field so easily.

The more protected, grounded and energetically supported the nervous system and energetic body become, the easier it often becomes to feel intuitive, clear, emotionally steady, spiritually connected and aligned within yourself.

May this guide support you in reconnecting with the sacredness of your own energy, your rituals and the spaces you call home.





And if you feel called to deepen this work further, Sacred Shield was created as a much deeper immersive journey into energetic protection, spiritual boundaries, sacred rituals, energetic maintenance and strengthening the energetic field through both ceremonial and practical spiritual practice.

For those seeking more personalised energetic support, protection rituals and custom energy work are also available through the ritual shop.

## SACRED SHIELD

Energy Protection & Vibrational  
Mastery



## RITUAL SHOP

Personally Prepared Rituals,  
Healings & Tarot



MAY YOUR SPACE REMAIN PEACEFUL.

MAY YOUR ENERGY REMAIN SOVEREIGN.

MAY YOUR SPIRIT REMAIN DEEPLY PROTECTED.

*Kristy*

PRIESTESS OF THE MYSTICS  
MAGICAL REALM